

NO. OF COPIES RECEIVED	
DISTRIBUTION	
ANTA FE	
FILE	
U.S.G.S.	
LAND OFFICE	
OPERATOR	

NEW MEXICO OIL CONSERVATION COMMISSION

Form C-101
Revised 1-1-65

5A. Indicate Type of Lease	
STATE <input type="checkbox"/>	FEE <input checked="" type="checkbox"/>
5. State Oil & Gas Lease No.	

APPLICATION FOR PERMIT TO DRILL, DEEPEN, OR PLUG BACK

1a. Type of Work		7. Unit Agreement Name	
b. Type of Well OIL WELL <input checked="" type="checkbox"/> GAS WELL <input type="checkbox"/> OTHER <input type="checkbox"/> DRILL <input checked="" type="checkbox"/> DEEPEN <input type="checkbox"/> PLUG BACK <input type="checkbox"/> SINGLE ZONE <input checked="" type="checkbox"/> MULTIPLE ZONE <input type="checkbox"/>		8. Farm or Lease Name Whit Ingram	
2. Name of Operator DAVID FASKEN		9. Well No. 1	
3. Address of Operator 608 First National Bank Building, Midland, Texas 79701		10. Field and Pool, or Wildcat Undes Garrett Drinkard	
4. Location of Well UNIT LETTER <u>I</u> LOCATED <u>2310</u> FEET FROM THE <u>South</u> LINE AND <u>330</u> FEET FROM THE <u>East</u> LINE OF SEC. <u>28</u> TWP. <u>16S</u> RGE. <u>38E</u> NMPM		12. County Lea	
21. Elevations (Show whether DF, RT, etc.) 3706.6		19. Proposed Depth 9100'	19A. Formation Drinkard
21A. Kind & Status Plug. Bond Statewide	21B. Drilling Contractor Robinson Brothers	20. Rotary or C.T. Rotary	
22. Approx. Date Work will start 8-26-77			

PROPOSED CASING AND CEMENT PROGRAM

SIZE OF HOLE	SIZE OF CASING	WEIGHT PER FOOT	SETTING DEPTH	SACKS OF CEMENT	EST. TOP
17-1/2"	13-3/8"	48#	450'	350 Class "C"	Surface
11"	8-5/8"	24# & 32#	5000'	300 Class "C"	3700'
7-7/8"	4-1/2"	10.50# & 11.6#	9100'	1000 Class "C"	5000'

See attachment for (1) Complete Plan
(2) B.O.P. Stack

*****Cement on the intermediate casing must be brought from the top of the salt or anhydrite to the surface casing. You can do this by either circulating the intermediate casing with cement, or a DV tool at the top of the salt.**

IN ABOVE SPACE DESCRIBE PROPOSED PROGRAM: IF PROPOSAL IS TO DEEPEN OR PLUG BACK, GIVE DATA ON PRESENT PRODUCTIVE ZONE AND PROPOSED NEW PRODUCTIVE ZONE. GIVE BLOWOUT PREVENTER PROGRAM, IF ANY.

I hereby certify that the information above is true and complete to the best of my knowledge and belief.

Signed James B. Henry Title Agent Date August 24, 1977
(This space for State Use)

APPROVED BY [Signature] TITLE SUPERVISOR DISTRICT DATE AUG 24 1977
CONDITIONS OF APPROVAL, IF ANY: ***See Above

RECEIVED

AUG 2 1977

OIL CONSERVATION COMM.
HOBBS, N. M.

RECOMMENDED DRILLING & COMPLETION PROCEDURE

A.F.E. NO. 377

David Fasken ----- WHIT INGRAM NO. 1 ---- Lea County, New Mexico
Garrett Drinkard Field

1. Drill 17-1/2" hole to 450' with spud mud.
2. Set and cement 13-3/8" casing @ 450', circulate cement to surface (estimated 350 sx Class "C" with 2% CaCl plus 1/4# Flocele per sack).
3. Nipple up wellhead (13-3/8" x 12" - 3000 WP), BOP (10" - 3000#). Rotating stripper head and choke manifold test to 1000 psig.
4. Drill 11" hole to 5000' with brine. Caution: Watch for Yates gas kick @ 3150' to 3400'.
5. Set and cement 8-5/8" casing @ 5000' w/500 sx Class "C" w/2% CaCl - (two stage if Yates gas present). Nipple up B.O.P. and 10"x12" Spool.
6. Drill to 9100' with fresh water. Increase viscosity and reduce water loss @ 8000' to control hole conditions.
7. Drill stem test all shows.
8. Run logs @ T.D. 9100' - integrated BHC-Sonic, CNL-FDC, dual induction log w/MSFL and Dip Meter.
9. Run 4-1/2" casing to 9100'. Ruff coat and centralize through all prospective pay zones with DV tool @ 6500'.
10. Cement 4-1/2" casing in 2 stages to fill annulus with cement back to 8-5/8" casing point (1st stage, 650 sx Class "C" with 1/4# Flocele per sack, circulate through DV tool 6 hours; cement 2nd stage with 350 sx Class "C" with 1/4# Flocele per sack).
11. Set slips (Cameron Type "CA" or equivalent), cut off, nipple up tubinghead and tree.
12. Move out rotary tools.
13. Set mast anchors.
14. Test casing to 3000 psig.
15. Rig up pulling unit and reverse unit, drill out DV tool and clean out to float collar. Spot acid over proposed perforations, pull tubing.
16. Perforate pay zone - displace acid.
17. Run tubing w/SN open ended and swab test well.
18. Acidize and/or fracture as indicated by test.

RECEIVED

AUG 2 1977

OIL CONSERVATION COMM.
HOBBS, N. M.

Recommended Drilling & Completion Procedure
A.F.E. No. 377
Whit Ingram No. 1
Page 2

19. Pull tubing and rerun with mud anchor, SN, and anchor catcher set 6 joints above perfs.
20. Run rods and pump. Release pulling unit.
21. Set pumping unit.
22. Set tank battery.
23. Potential test well.
24. Level location.

JBH:8-23-77

RECEIVED

AUG 21 1977

OIL CONSERVATION COMM.
HOBBS, N. M.

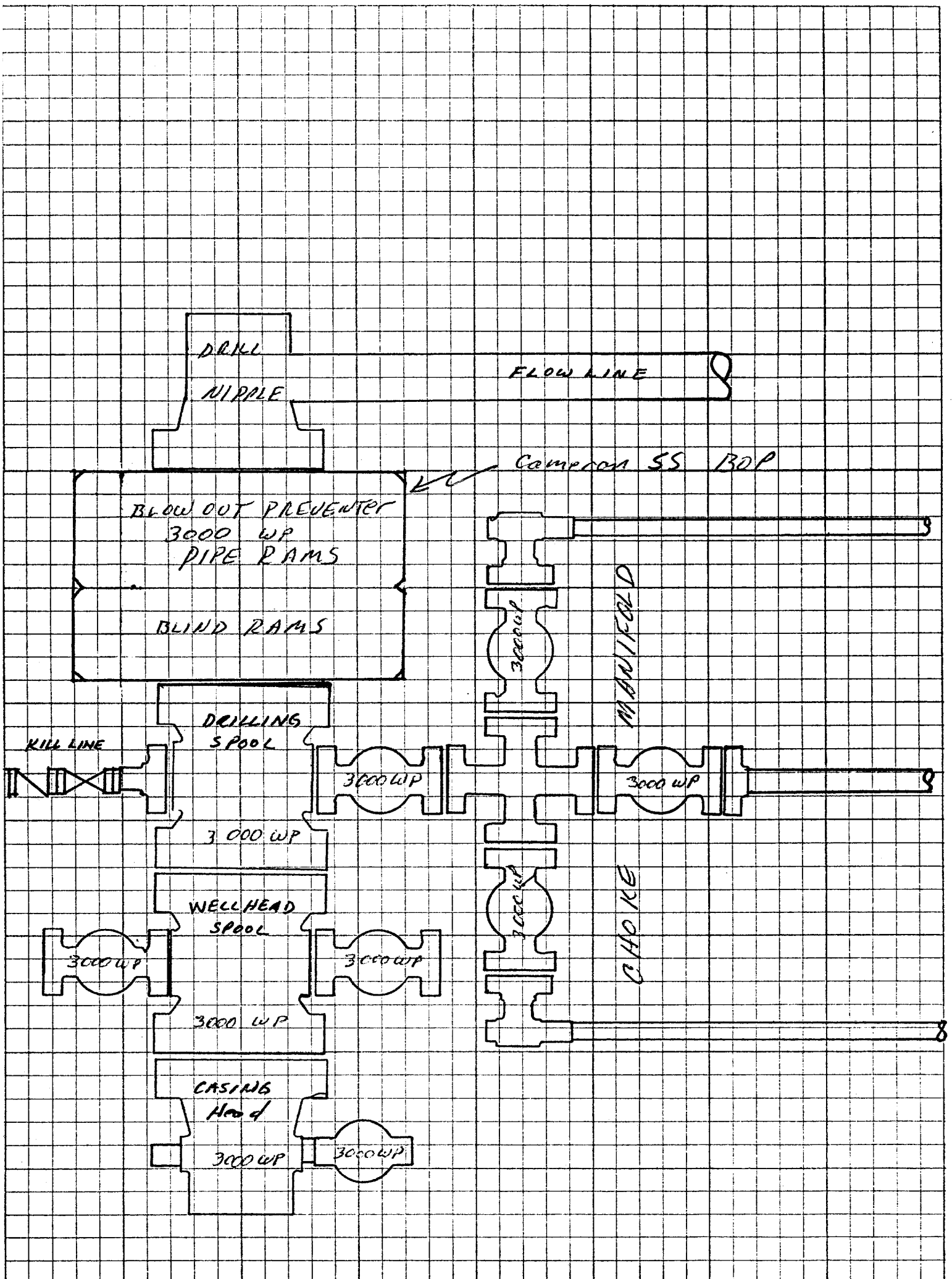
HENRY ENGINEERING

SUBJECT: BOP STACK FOR
WELL

FILE: DAVID FASKEN-WHITE INGRAM #1

DATE: 8-23-77

ENGINEERING MEMORANDUM



RECEIVED

AUG 24 1977

OIL CONSERVATION COMM.
HOBBS, N. M.

NEW MEXICO OIL CONSERVATION COMMISSION
WELL LOCATION AND ACREAGE DEDICATION PLAT

Form O-10-1
Supersedes O-10-2
Effective 10-1-55

All distances must be from the outer boundaries of the Section

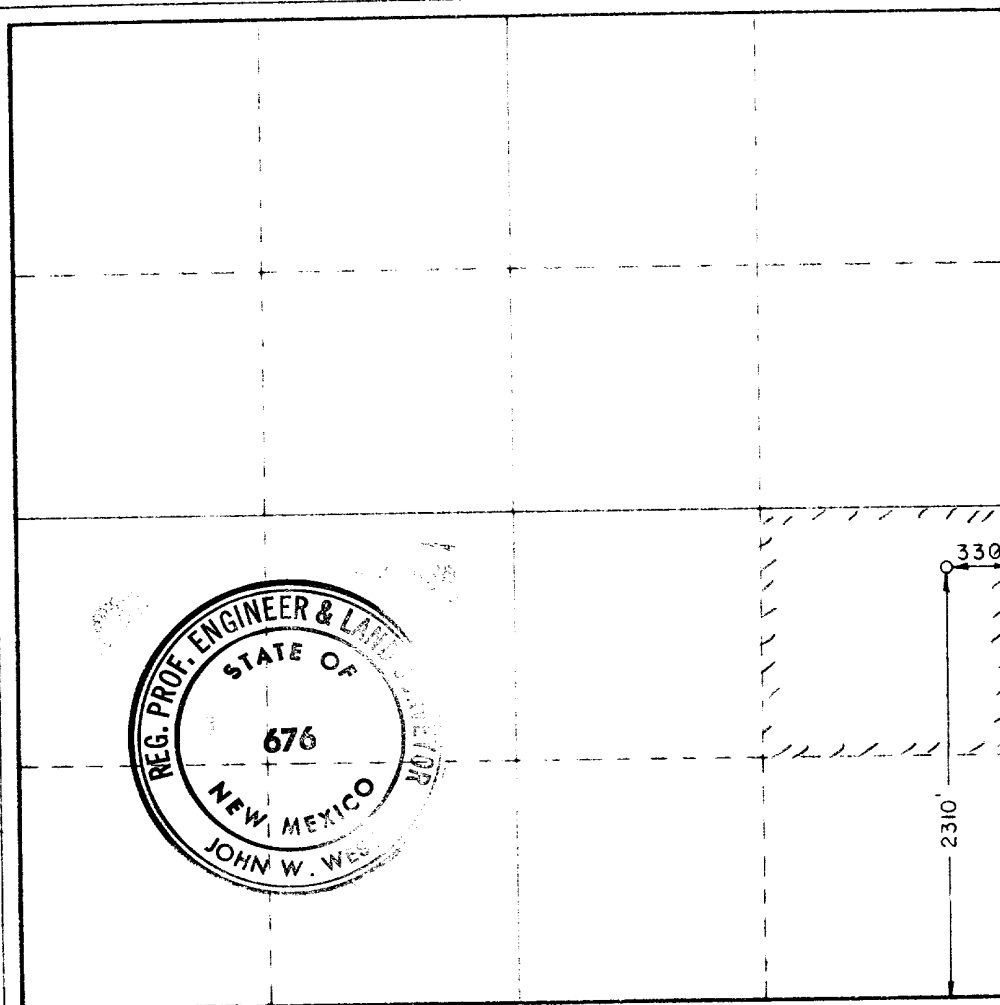
Operator David Fasken		Lease Whit Ingram		Well No. 1
Unit Letter K I	Section 28	Township 16 South	Range 38 East	County Lea
Actual Footage Location of Well: 330 feet from the East line and 2310 feet from the South line. Ground Level Elev. 3706.6 Producing Formation DRINKARD Pool GARRETT DRINKARD (ORD) Section Acres 40				

1. Outline the acreage dedicated to the subject well by colored pencil or hatchure marks on the plat below.
2. If more than one lease is dedicated to the well, outline each and identify the ownership thereof (both as to working interest and royalty).
3. If more than one lease of different ownership is dedicated to the well, have the interests of all owners been consolidated by communitization, unitization, force-pooling, etc?

☐ Yes ☐ No If answer is "yes," type of consolidation _____

If answer is "no," list the owners and tract descriptions which have actually been consolidated (Use reverse side of this form if necessary.) _____

No allowable will be assigned to the well until all interests have been consolidated (by communitization, unitization, forced-pooling, or otherwise) or until a non-standard unit, eliminating such interests, has been approved by the Commission.



CERTIFICATION

I hereby certify that the information contained herein is true and complete to the best of my knowledge and belief.

James B. Henry
Name

James B. Henry
Position

AGENT

DAVID FASKEN
Signed by

8-24-77
Date

I hereby certify that the well location shown on this plat was plotted from field notes of actual surveys made by me or under my supervision, and that the same is true and correct to the best of my knowledge and belief.

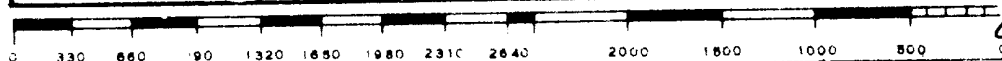
Date Surveyed

August 24, 1977

Registered Professional Engineer and/or Land Surveyor

John W. Wat
Certificate No.

676



RECEIVED

AUG 21 1977

OIL CONSERVATION COMM.
HOBBS, N. M.

