

NEW MEXICO OIL CONSERVATION COMMISSION
WELL LOCATION AND ACREAGE DEDICATION PLAT

Form C-102
Supersedes C-128
Effective 1-1-65

All distances must be from the outer boundaries of the Section

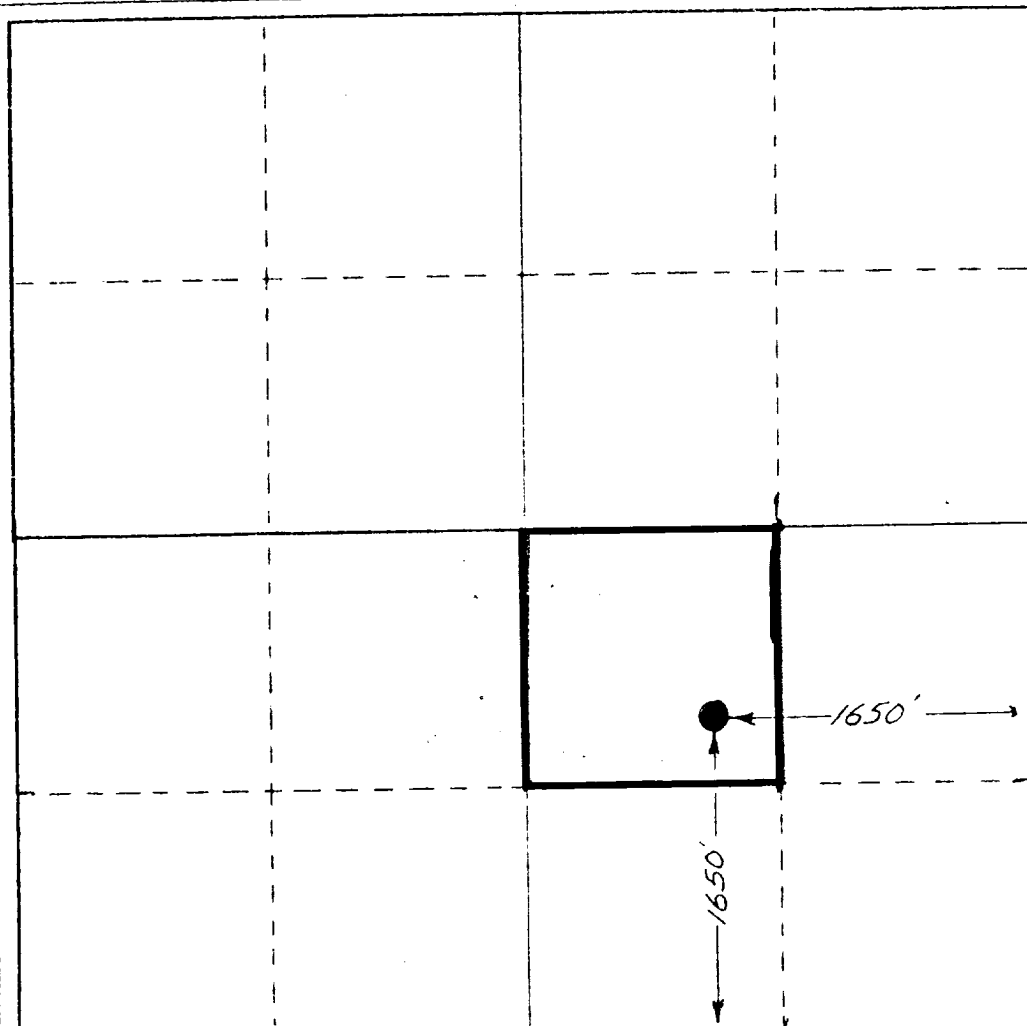
Operator SUPRON ENERGY CORPORATION		Lease State of New Mexico 33-16-33		Well No. 2
Unit Letter "J"	Section 33	Township 16 South	Range 33 East	County Lea
Actual Footage Location of Well: 1650 feet from the South line and 1650 feet from the East line				
Ground Level Elev. 4204.4	Producing Formation Sanmal-Penn		Dedicated Acreage: 40 Acres	

1. Outline the acreage dedicated to the subject well by colored pencil or hachure marks on the plat below.
2. If more than one lease is dedicated to the well, outline each and identify the ownership thereof (both as to working interest and royalty).
3. If more than one lease of different ownership is dedicated to the well, have the interests of all owners been consolidated by communitization, unitization, force-pooling, etc?

☐ Yes ☐ No If answer is "yes," type of consolidation _____

If answer is "no," list the owners and tract descriptions which have actually been consolidated. (Use reverse side of this form if necessary.) _____

No allowable will be assigned to the well until all interests have been consolidated (by communitization, unitization, forced-pooling, or otherwise) or until a non-standard unit, eliminating such interests, has been approved by the Commission.



CERTIFICATION

I hereby certify that the information contained herein is true and complete to the best of my knowledge and belief.

Dan R. Collier

Name
Dan R. Collier

Position
Operations Assistant

Company
SUPRON ENERGY CORPORATION

Date
December 13, 1977

I hereby certify that the well location shown on this plat was plotted from field notes of actual surveys made by me or under my supervision, and that the same is true and correct to the best of my knowledge and belief.

Date Surveyed
December 6, 1977
Registered and Certified
HERSCHEL L. JONES
3640
REGISTERED LAND SURVEYOR

330 660 990 1320 1650 1980 2310 2640 2970 3300 3630 3960 4290 4620 4950 5280 5610 5940 6270 6600