

NO. OF COPIES RECEIVED	
DISTRIBUTION	
SANTA FE	
FILE	
U.S.G.S.	
LAND OFFICE	
OPERATOR	

NEW MEXICO OIL CONSERVATION COMMISSION

Form C-101
Revised 1-1-65

5A. Indicate Type of Lease	
STATE <input checked="" type="checkbox"/>	FEE <input type="checkbox"/>
5. State Oil & Gas Lease No.	
NM-1351	

APPLICATION FOR PERMIT TO DRILL, DEEPEN, OR PLUG BACK

1a. Type of Work		7. Unit Agreement Name	
b. Type of Well OIL WELL <input type="checkbox"/> GAS WELL <input checked="" type="checkbox"/> OTHER <input type="checkbox"/>		8. Farm or Lease Name	
DEEPEN <input type="checkbox"/> PLUG BACK <input type="checkbox"/>		SNM-33-16-33	
2. Name of Operator		9. Well No.	
SUPRON ENERGY CORPORATION		2	
3. Address of Operator		10. Field and Pool, or Wildcat	
Suite 1700 Campbell Centre 8350 North Central Expressway, Dallas, Texas		Undesignated	
4. Location of Well		12. County	
UNIT LETTER <u>J</u> LOCATED <u>1650</u> FEET FROM THE <u>South</u> LINE		Lea	
AND <u>1650</u> FEET FROM THE <u>East</u> LINE OF SEC. <u>33</u> TWP. <u>16S</u> RGE. <u>33E</u> NMPM			
19. Proposed Depth		19A. Formation	20. Rotary or C.T.
13,700		Morrow	Rotary
21. Elevations (Show whether DF, RT, etc.)	21A. Kind & Status Plug. Bond	21B. Drilling Contractor	22. Approx. Date Work will start
4204.4' Gr	\$10,000 Blanket	Ard Drilling Company	December 18, 1977

23. PROPOSED CASING AND CEMENT PROGRAM

SIZE OF HOLE	SIZE OF CASING	WEIGHT PER FOOT	SETTING DEPTH	SACKS OF CEMENT	EST. TOP
17-1/2"	13-3/8"	48#	350'	435	Surface
12-1/4"	8-5/8"	24# and 32#	4300'	2 stages - 500	sxs surface
7-7/8"	5-1/2"	17# & 20#	13,700'	175	12,700'.

Supron Energy Corporation proposes to drill and complete this well as follows:

1. Drill 17-1/2" hole to 350'. Run 13-3/8" casing and cement to surface.
2. Install and test 15" x 900 Series Shaffer double ram or equivalent BOP.
3. Drill 12-1/4" hole to 4300'. run 8-5/8" casing and set DV tool at the top of the Salt and cement in two stages. The cement on the 2n stage will be circulated to surface.
4. Drill 7-7/8" hole to TD of 13,700'.
5. Run Electric logs.
6. Run 5-1/2" production casing, if warranted.
7. Perforate and stimulate as warranted to establish commercial production.

IN ABOVE SPACE DESCRIBE PROPOSED PROGRAM: IF PROPOSAL IS TO DEEPEN OR PLUG BACK, GIVE DATA ON PRESENT PRODUCTIVE ZONE AND PROPOSED NEW PRODUCTIVE ZONE. GIVE BLOWOUT PREVENTER PROGRAM, IF ANY.

I hereby certify that the information above is true and complete to the best of my knowledge and belief.

Signed Don R. Collier Title Operations Assistant Date December 13, 1977

Don R. Collier (Signature)

SUPERVISOR DISTRICT I

DEC 14 1977

APPROVED BY [Signature] TITLE [Signature] DATE [Signature]

CONDITIONS OF APPROVAL, IF ANY:

RECEIVED

1947

OIL CONSERVATION COMM.
HOBBS, N. M.

**NEW MEXICO OIL CONSERVATION COMMISSION
WELL LOCATION AND ACREAGE DEDICATION PLAT**

Form C-102
Supersedes C-128
Effective 1-1-65

All distances must be from the outer boundaries of the Section

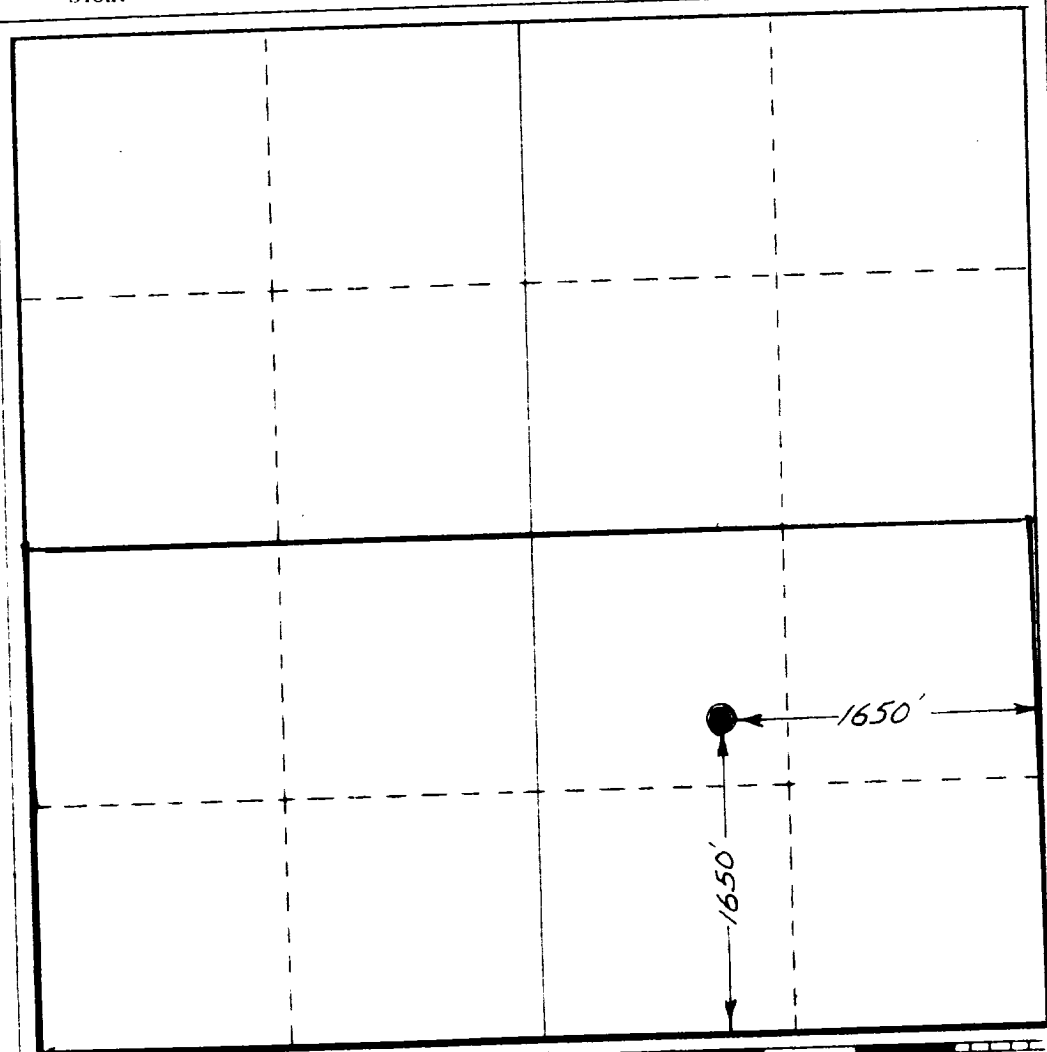
Operator SUPRON ENERGY CORPORATION			Lease State of New Mexico 33-16-33		Well No. 2
Unit Letter "J"	Section 33	Township 16 South	Range 33 East	County Lea	
Actual Footage Location of Well: 1650 feet from the South line and 1650 feet from the East line					
Ground Level Elev. 4204.4	Producing Formation Morrow		Pool Undesignated		Dedicated Acreage: 320 Acres

1. Outline the acreage dedicated to the subject well by colored pencil or hatchure marks on the plat below.
2. If more than one lease is dedicated to the well, outline each and identify the ownership thereof (both as to working interest and royalty).
3. If more than one lease of different ownership is dedicated to the well, have the interests of all owners been consolidated by communitization, unitization, force-pooling, etc?

☐ Yes ☐ No If answer is "yes," type of consolidation _____

If answer is "no," list the owners and tract descriptions which have actually been consolidated. (Use reverse side of this form if necessary.) _____

No allowable will be assigned to the well until all interests have been consolidated (by communitization, unitization, forced-pooling, or otherwise) or until a non-standard unit, eliminating such interests, has been approved by the Commission.



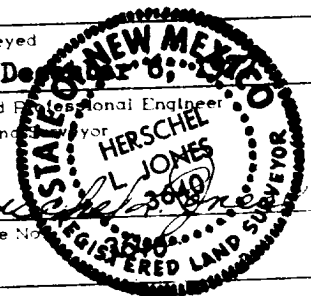
CERTIFICATION

I hereby certify that the information contained herein is true and complete to the best of my knowledge and belief.

Name **Dan R. Collier**
 Position **Operations Assistant**
 Company **SUPRON ENERGY CORPORATION**
 Date **December 13, 1977**

I hereby certify that the well location shown on this plat was plotted from field notes of actual surveys made by me or under my supervision, and that the same is true and correct to the best of my knowledge and belief.

Date Surveyed _____
 Registered Professional Engineer and/or Land Surveyor
L. Jones
 Certificate No. _____



RECEIVED

25177

OIL CONSERVATION COMM.
MOORE, N. M.

113