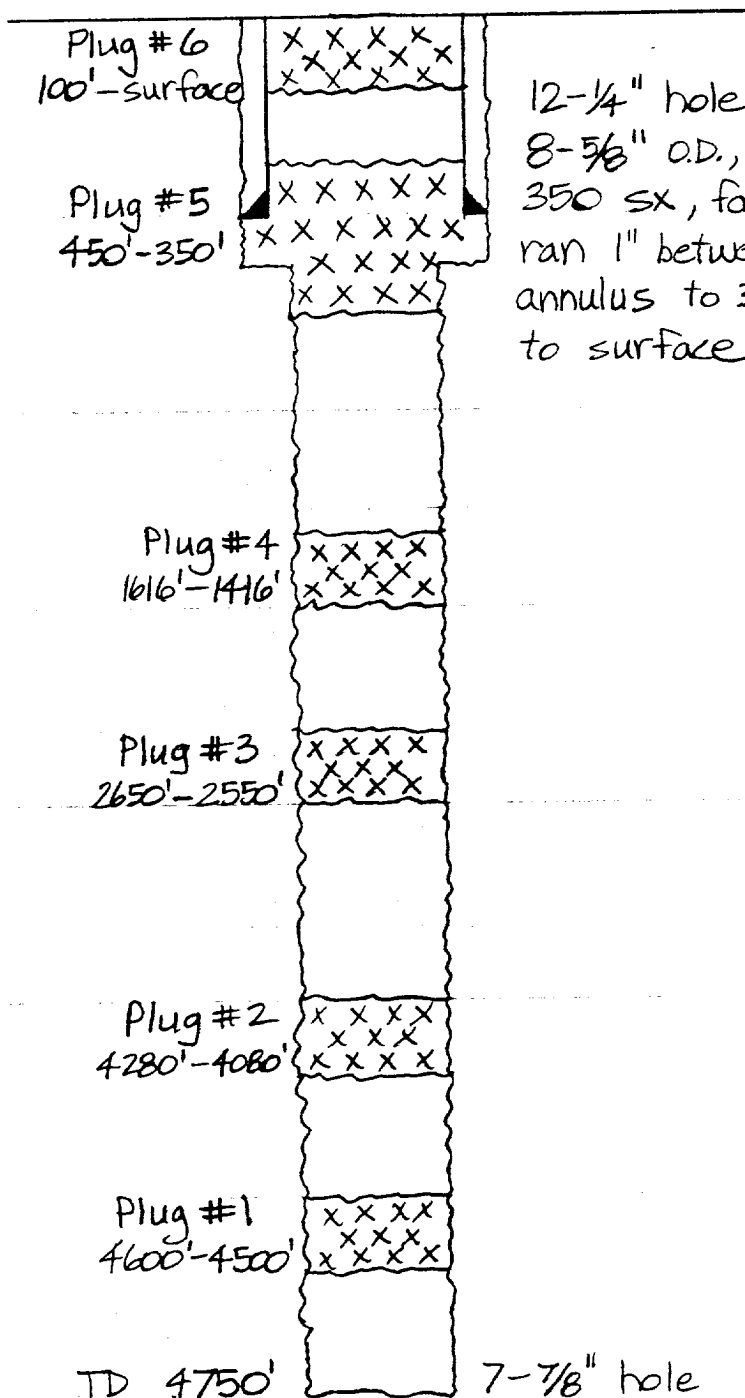


GL@ 4120'



12-1/4" hole @ 415'
8-5/8" O.D., 24#/ft., @ 413'
350 sx, failed to circulate,
ran 1" between 8-5/8" and 12-1/4"
annulus to 37', 25 sx, cement
to surface.

7-7/8" hole

Plugged and Abandoned Well Sketch		BY	DATE	CHKD	APP'D
NO.	REVISION				
FOR BIDS	PHILLIPS PETROLEUM COMPANY		JA NO.	FILE CODE	
FOR APPR	BARTLESVILLE, OKLAHOMA		AFE NO.	SCALE	
FOR CONST	MARATHON 18 STATE WELL NO. 1		DWG NO.		
DRAWN	Unit Letter M, 330' FWL, 330' FSL,		SH NO.		
CHECKED	Sec. 18, T-17-S, R-34-E, Lea Co., N.M.				
APP'D					