

NO. OF COPIES RECEIVED		
DISTRIBUTION		
SANTA FE		
FILE		
U.S.G.S.		
LAND OFFICE		
OPERATOR		

# NEW MEXICO OIL CONSERVATION COMMISSION

Form C-101  
Revised 1-4-65

5A. Indicate Type of Lease STATE <input checked="" type="checkbox"/> FEE <input type="checkbox"/>
5. State Oil & Gas Lease No. LG 4195
7. Unit Agreement Name -----
8. Farm or Lease Name Pennzoil-State
9. Well No. 1
10. Field and Pool, or Wildcat UNTERMINATED
12. County Lea
19. Proposed Depth 12000
19A. Formation Atoka
20. Rotary or C.T. Rotary
21. Elevations (Show whether DF, RT, etc.) RKB 3890'
21A. Kind & Status Plug. Bond Single well
21B. Drilling Contractor McVay
22. Approx. Date Work will start August 1, 1978

## APPLICATION FOR PERMIT TO DRILL, DEEPEN, OR PLUG BACK

1a. Type of Work DRILL <input checked="" type="checkbox"/> DEEPEN <input type="checkbox"/> PLUG BACK <input type="checkbox"/>
b. Type of Well OIL WELL <input checked="" type="checkbox"/> GAS WELL <input type="checkbox"/> OTHER <input type="checkbox"/> SINGLE ZONE <input checked="" type="checkbox"/> MULTIPLE ZONE <input type="checkbox"/>
c. Name of Operator Bass Enterprises Production Co. -
d. Address of Operator Box 2760, Midland, Texas 79702
4. Location of Well UNIT LETTER <u>P</u> LOCATED <u>700</u> FEET FROM THE <u>South</u> LINE AND <u>660</u> FEET FROM THE <u>East</u> LINE OF SEC. <u>22</u> TWP. <u>16S</u> RGE. <u>36E</u> NMPM

## PROPOSED CASING AND CEMENT PROGRAM

SIZE OF HOLE	SIZE OF CASING	WEIGHT PER FOOT	SETTING DEPTH	SACKS OF CEMENT	EST. TOP
14 3/4"	11 3/4"	42 lb	360	225	surface
11"	8 5/8"	24 & 28 lb	4150	200	3150'
7 7/8"	5 1/2"	15.5 & 17 lb	12000	350	9800'

BOP diagrams attached BEPCo. II and BEPCo. IV.

**\*\*\*Cement on the intermediate casing must be brought from the top of salt or anhydrite to the surface casing. You can do this by either circulating the intermediate casing with cement, or a DV tool at the top of the salt.**

4. ABOVE SPACE DESCRIBE PROPOSED PROGRAM: IF PROPOSAL IS TO DEEPEN OR PLUG BACK, GIVE DATA ON PRESENT PRODUCTIVE ZONE AND PROPOSED NEW PRODUCTIVE ZONE. GIVE BLOWOUT PREVENTER PROGRAM, IF ANY.

I hereby certify that the information above is true and complete to the best of my knowledge and belief.

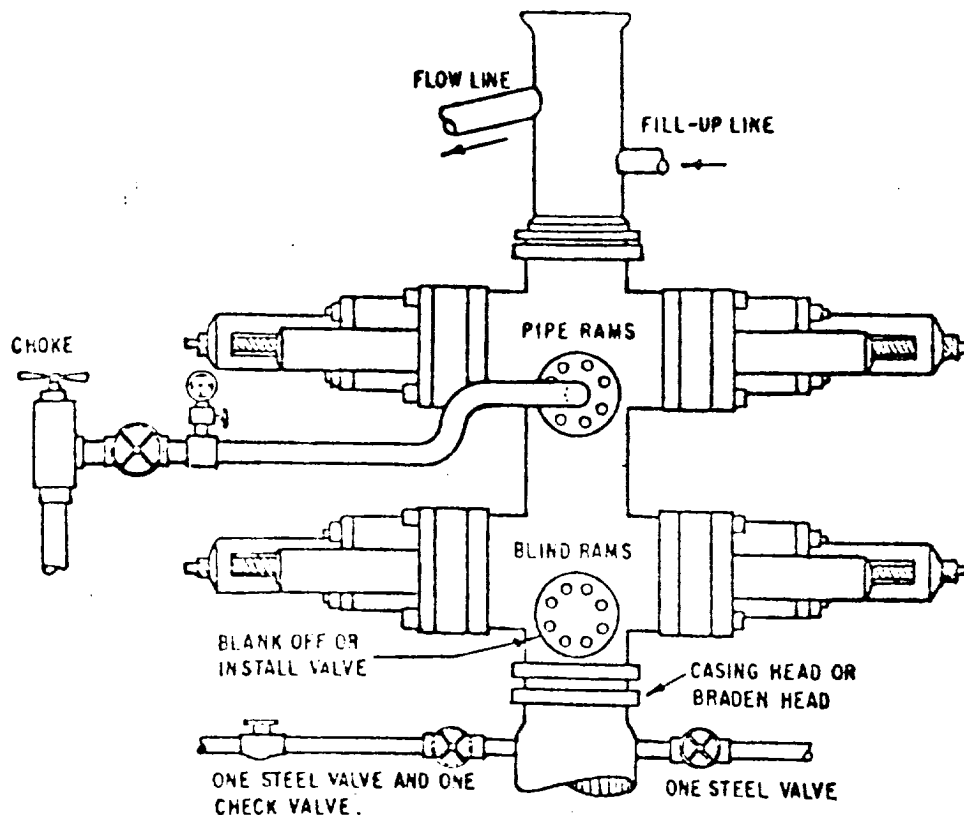
Signed H. P. Murphy, Jr. Title Asst. Prod. Clerk Date July 14, 1978  
(This space for State Use)

APPROVED BY Jerry S. Sutor TITLE SUPERVISOR DISTRICT I DATE JUL 20 1978  
CONDITIONS OF APPROVAL, IF ANY: **\*\*\*SEE ABOVE**

RECEIVED

JUL 17 1978

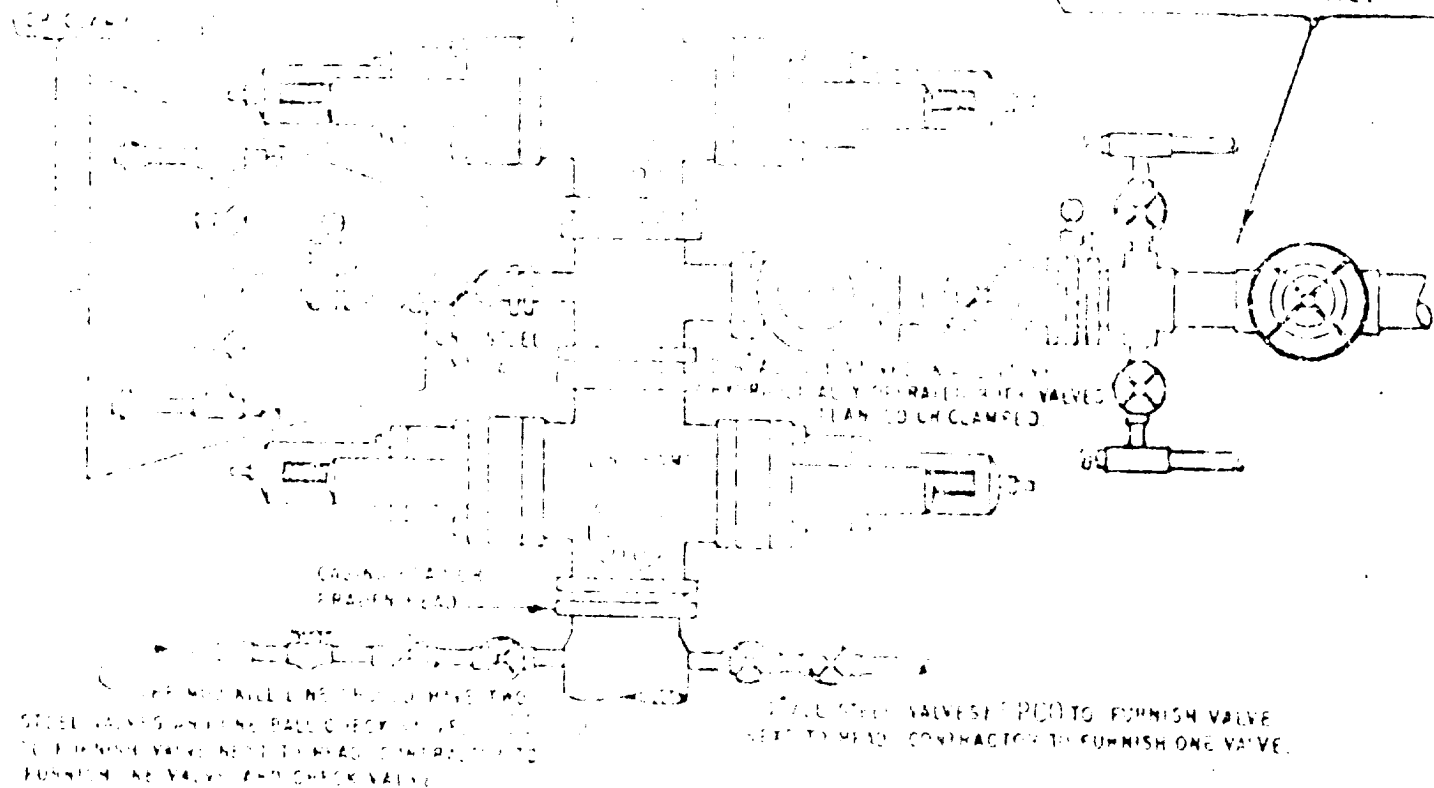
COMM  
JUL 17 1978



## THE FOLLOWING CONSTITUTE MINIMUM BLOWOUT PREVENTER REQUIREMENTS

- A. ONE DOUBLE GATE BLOWOUT PREVENTER WITH LOWER RAMS BLIND AND UPPER RAMS FOR PIPE, ALL HYDRAULICALLY CONTROLLED. OPENING ON PREVENTERS BETWEEN RAMS.
- B. OPENING TO BE FLANGED, STUDDED OR CLAMPED AND AT LEAST TWO INCHES DIAMETER.
- C. ALL CONNECTIONS FROM OPERATING MANIFOLD TO PREVENTERS TO BE ALL STEEL HOSE OR TUBE A MINIMUM OF ONE INCH IN DIAMETER.
- D. THE AVAILABLE CLOSING PRESSURE SHALL BE AT LEAST 15% IN EXCESS OF THAT REQUIRED WITH SUFFICIENT VOLUME TO OPERATE THE PREVENTERS.
- E. ALL CONNECTIONS TO AND FROM PREVENTERS TO HAVE A PRESSURE RATING EQUIVALENT TO THAT OF THE B.O.P.'s.
- F. MANUAL CONTROLS TO BE INSTALLED BEFORE DRILLING CEMENT PLUG.
- G. VALVE TO CONTROL FLOW THROUGH DRILL PIPE TO BE LOCATED ON RIG FLOOR.
- H. CHOKE MAY BE EITHER POSITIVE OR ADJUSTABLE. Choke spool may be used between rams.

171878  
COMM.  
171878



THE MASTER VALVE IS TO HAVE AT LEAST ONE LINE TO CONTROL EACH OF THE 4" VALVE TO PREVENT A CLOSURE OF THE 4" LINE IN CASE OF A REMOTE FROM WHICH ANOTHER MASTER VALVE SHOULD BE INSTALLED AT THE REMOTE LOCATION. THE CHOICE IS TO BE AVAILABLE. IT COULD BE EITHER ADJUSTABLE OR POSITIVE.

## THE FLOODING INSTITUTE: A NEWER, BETTER PREVENTER REQUIREMENTS

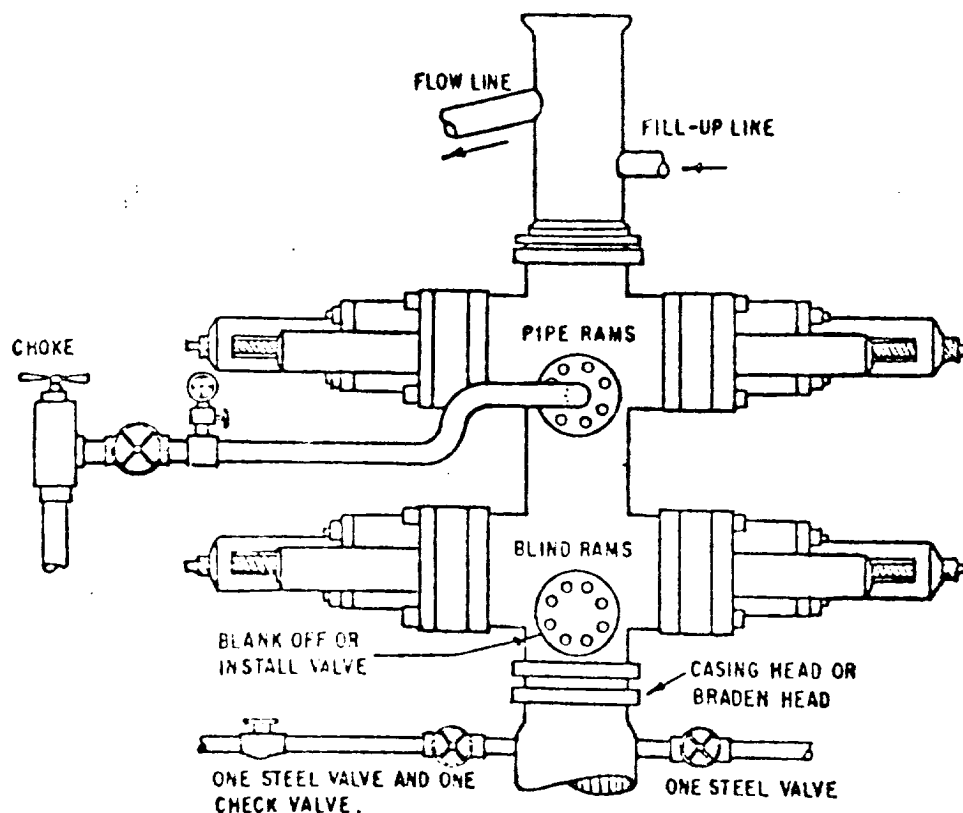
1. LOCATION OF THE RIG MUST BE IN AN OPEN AREA WITH SUFFICIENT SPACE TO MANEUVER, A CLEAR ACCESS TO THE RIG AND EITHER  
2. THE RIG MUST BE IN AN OPEN AREA WITH SUFFICIENT SPACE TO MANEUVER, A CLEAR ACCESS TO THE RIG AND EITHER  
3. THE RIG MUST BE IN AN OPEN AREA WITH SUFFICIENT SPACE TO MANEUVER, A CLEAR ACCESS TO THE RIG AND EITHER  
4. THE RIG MUST BE IN AN OPEN AREA WITH SUFFICIENT SPACE TO MANEUVER, A CLEAR ACCESS TO THE RIG AND EITHER  
5. THE RIG MUST BE IN AN OPEN AREA WITH SUFFICIENT SPACE TO MANEUVER, A CLEAR ACCESS TO THE RIG AND EITHER  
6. THE RIG MUST BE IN AN OPEN AREA WITH SUFFICIENT SPACE TO MANEUVER, A CLEAR ACCESS TO THE RIG AND EITHER  
7. THE RIG MUST BE IN AN OPEN AREA WITH SUFFICIENT SPACE TO MANEUVER, A CLEAR ACCESS TO THE RIG AND EITHER  
8. THE RIG MUST BE IN AN OPEN AREA WITH SUFFICIENT SPACE TO MANEUVER, A CLEAR ACCESS TO THE RIG AND EITHER  
9. THE RIG MUST BE IN AN OPEN AREA WITH SUFFICIENT SPACE TO MANEUVER, A CLEAR ACCESS TO THE RIG AND EITHER  
10. THE RIG MUST BE IN AN OPEN AREA WITH SUFFICIENT SPACE TO MANEUVER, A CLEAR ACCESS TO THE RIG AND EITHER

### THREE CLOSURE : LEAD-CONTAINING PREVENTERS

RECEIVED

JUL 17 1978

U.S. DEPARTMENT OF JUSTICE  
FEDERAL BUREAU OF INVESTIGATION



### THE FOLLOWING CONSTITUTE MINIMUM BLOWOUT PREVENTER REQUIREMENTS

- A. ONE DOUBLE GATE BLOWOUT PREVENTER WITH LOWER RAMS BLIND AND UPPER RAMS FOR PIPE, ALL HYDRAULICALLY CONTROLLED. OPENING ON PREVENTERS BETWEEN RAMS.
- B. OPENING TO BE FLANGED, STUDDED OR CLAMPED AND AT LEAST TWO INCHES DIAMETER.
- C. ALL CONNECTIONS FROM OPERATING MANIFOLD TO PREVENTERS TO BE ALL STEEL HOSE OR TUBE A MINIMUM OF ONE INCH IN DIAMETER.
- D. THE AVAILABLE CLOSING PRESSURE SHALL BE AT LEAST 15% IN EXCESS OF THAT REQUIRED WITH SUFFICIENT VOLUME TO OPERATE THE PREVENTERS.
- E. ALL CONNECTIONS TO AND FROM PREVENTERS TO HAVE A PRESSURE RATING EQUIVALENT TO THAT OF THE B.O.P.'s.
- F. MANUAL CONTROLS TO BE INSTALLED BEFORE DRILLING CEMENT PLUG. —
- G. VALVE TO CONTROL FLOW THROUGH DRILL PIPE TO BE LOCATED ON RIG FLOOR. ✓
- H. CHOKE MAY BE EITHER POSITIVE OR ADJUSTABLE. Choke spool may be used between rams.

BEPCO II  
ONE HYDRAULIC DUAL BLOWOUT PREVENTER