

NEW MEXICO OIL CONSERVATION COMMISSION
WELL LOCATION AND ACREAGE DEDICATION PLAT

Form C-102
Supersedes C-128
Effective 1-1-65

All distances must be from the outer boundaries of the Section

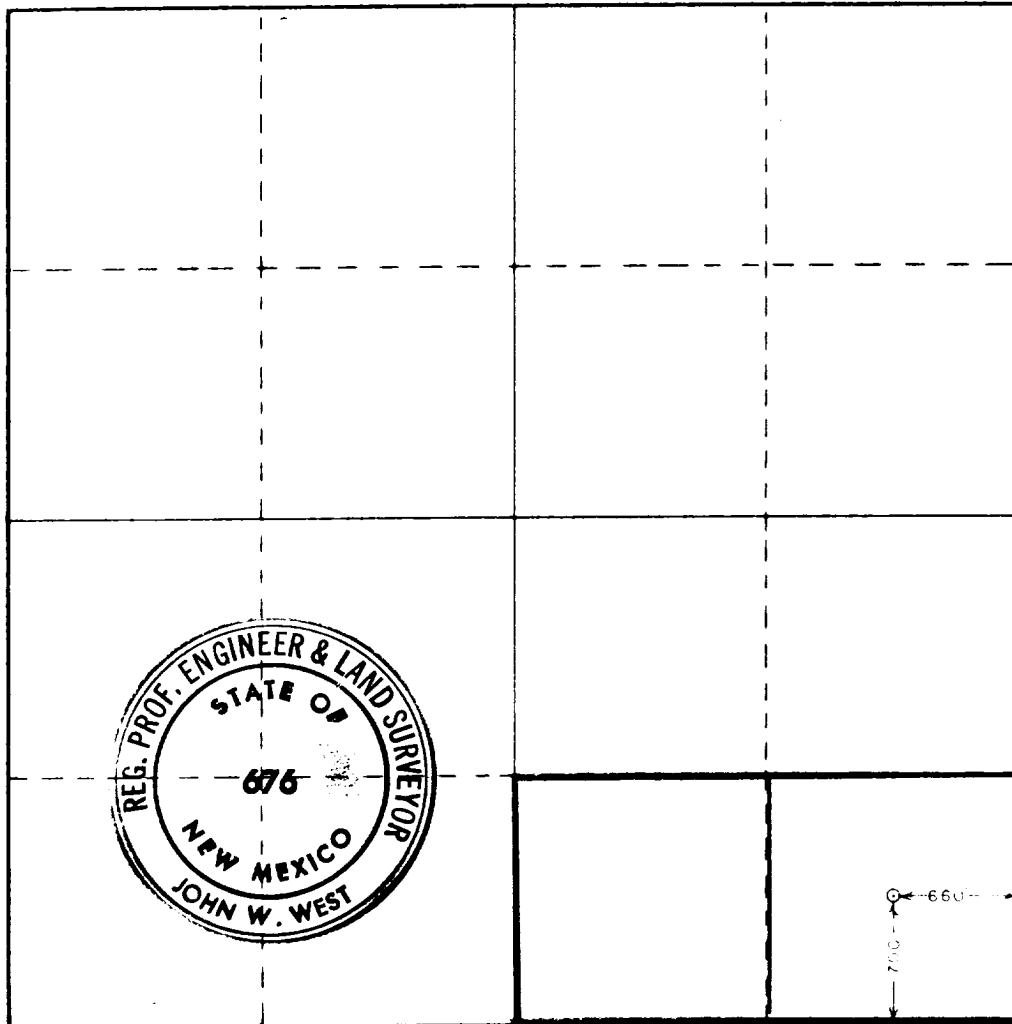
Operator Bass Enterprises Prod. Co.-			Lease Pennzoil-State			Well No. 1		
Initial Letter P	Section 22	Township 16 South	Range 36 East	County Lea				
Actual Portage Location of Well: 700 feet from the South line and 660 feet from the East line								
Ground Level Elev. 3872.7	Producing Formation Strawn		Pool UNDESIGNATED			Dedicated Acreage: 80 Acres		

1. Outline the acreage dedicated to the subject well by colored pencil or hatchure marks on the plat below.
2. If more than one lease is dedicated to the well, outline each and identify the ownership thereof (both as to working interest and royalty).
3. If more than one lease of different ownership is dedicated to the well, have the interests of all owners been consolidated by communitization, unitization, force-pooling, etc?

☒ Yes ☐ No If answer is "yes," type of consolidation working interest unit.

If answer is "no," list the owners and tract descriptions which have actually been consolidated. (Use reverse side of this form if necessary.) _____

No allowable will be assigned to the well until all interests have been consolidated (by communitization, unitization, forced-pooling, or otherwise) or until a non-standard unit, eliminating such interests, has been approved by the Commission.



CERTIFICATION

I hereby certify that the information contained herein is true and complete to the best of my knowledge and belief.

Louie M. Cure
Name

Louie M. Cure
Position

Division Drilling Engineer

Company

July 14, 1978

Date

I hereby certify that the well location shown on this plat was plotted from field notes of actual surveys made by me or under my supervision, and that the same is true and correct to the best of my knowledge and belief.

Date Surveyed

July 10, 1978

Registered Professional Engineer and/or Land Surveyor

John W. West
Certificate No. **John W. West 676**

Ronald J. Eidson 3239



RECEIVED

87612 171978

COMMUNICATION COMM.
S. M. M.

11
11
11