

NO. OF COPIES RECEIVED	
DISTRIBUTION	
SANTA FE	
FILE	
S.G.S.	
AND OFFICE	
PERATOR	

NEW MEXICO OIL CONSERVATION COMMISSION

Form C-101
Revised 11-65

5A. Indicate Type of Lease STATE <input type="checkbox"/> FCC <input checked="" type="checkbox"/>
5. State Oil & Gas Lease No.
7. Unit Agreement Name
8. Farm or Lease Name Aetna Eaves
9. Well No. 1
10. Field and Pool, or Wildcat Wildcat
12. County Lea
19. Proposed Depth 8700'
19A. Formation Drinkard
20. Rotary or C.T. Rotary
21B. Drilling Contractor Tom Brown, Inc.
22. Approx. Date Work will start August 16, 1978

APPLICATION FOR PERMIT TO DRILL, DEEPEN, OR PLUG BACK			
Type of Work Type of Well OIL WELL <input checked="" type="checkbox"/> GAS WELL <input type="checkbox"/> OTHER <input type="checkbox"/> Name of Operator Marathon Oil Company Address of Operator P. O. Box 2409, Hobbs, New Mexico 88240 Location of Well UNIT LETTER C LOCATED 660 FEET FROM THE North LINE 1980 FEET FROM THE West LINE OF SEC. 25 TWP. 16S RGE. 38E NMPM			
11. Proposed Depth 8700'			
19A. Formation Drinkard			
20. Rotary or C.T. Rotary			
21A. Kind & Status Plug. Bond Current			
21B. Drilling Contractor Tom Brown, Inc.			
22. Approx. Date Work will start August 16, 1978			

PROPOSED CASING AND CEMENT PROGRAM

SIZE OF HOLE	SIZE OF CASING	WEIGHT PER FOOT	SETTING DEPTH	SACKS OF CEMENT	EST. TOP
17"	13 3/8"	48#	300'	175	Circulate
12 1/4"	8 5/8"	24#	5000'	1800	Circulate
7 7/8"	5 1/2"	17#	8700'	1500	Circulate

Intend to drill to approximately 8700'.

Cement and test all casing by approved methods.

Blowout equipment to be used is 900 Series, Cameron or equivalent with remote controls on the derrick floor and closing unit a minimum of 75' from the wellhead.

ABOVE SPACE DESCRIBE PROPOSED PROGRAM: IF PROPOSAL IS TO DEEPEN OR PLUG BACK, GIVE DATA ON PRESENT PRODUCTIVE ZONE AND PROPOSED NEW PRODUCTIVE ZONE. GIVE BLOWOUT PREVENTER PROGRAM, IF ANY.

I hereby certify that the information above is true and complete to the best of my knowledge and belief.

by William P. Huch Title Production Engineer Date August 7, 1978

(This space for State Use)

PROVED BY [Signature] TITLE SUPERVISOR DISTRICT I DATE AUG 9 1978

CONDITIONS OF APPROVAL, IF ANY:

RECEIVED

AUG 8 1978

CONSERVATION COMM.
MORRIS, N. M.

NEW MEXICO OIL CONSERVATION COMMISSION
WELL LOCATION AND ACREAGE DEDICATION PLAT

Form C-102
Supersedes C-128
Effective 1-1-65

All distances must be from the outer boundaries of the Section.

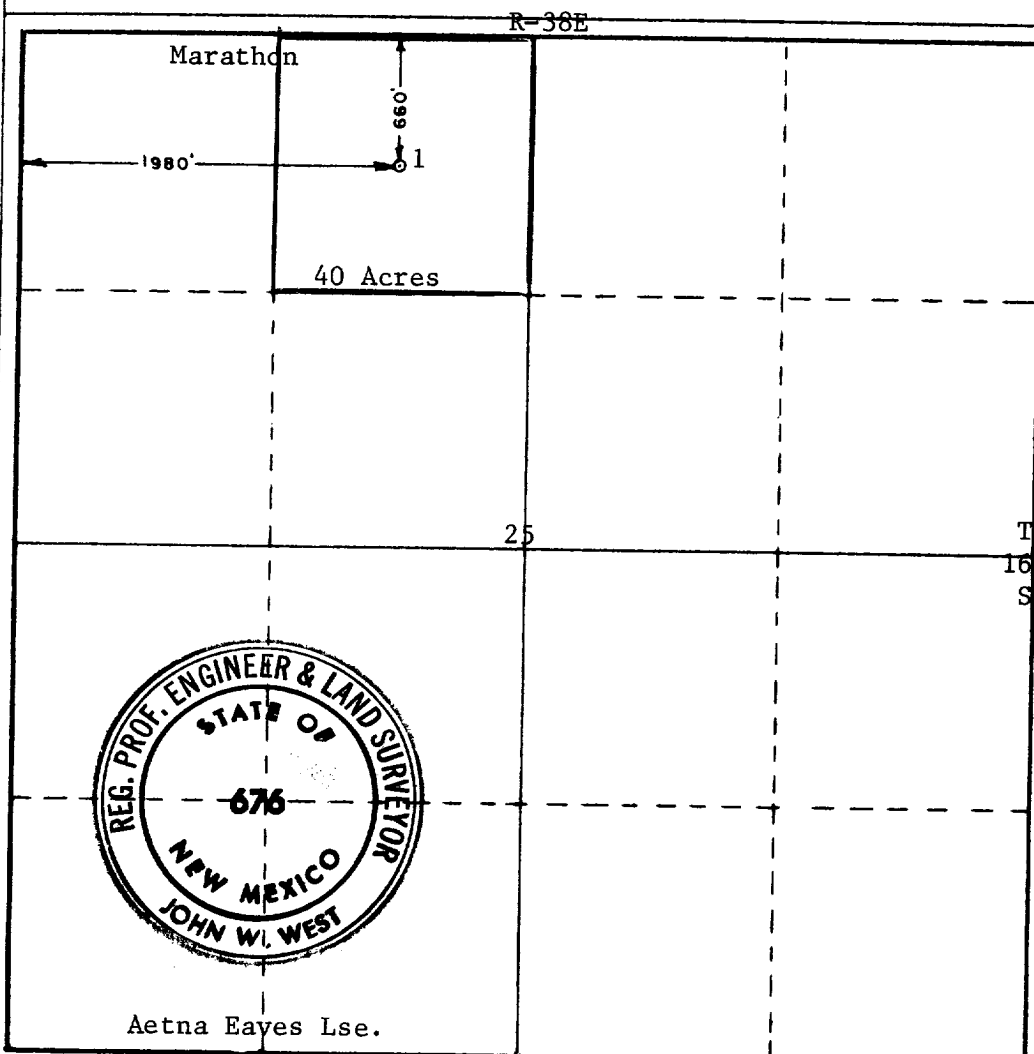
Operator Marathon Oil Co.			Lease Aetna Eaves			Well No. 1		
Unit Letter C	Section 25	Township 16 South		Range 38 East	County Lea			
Actual Footage Location of Well: 660 feet from the North line and 1980 feet from the West line								
Ground Level Elev. 3685.5	Producing Formation Drinkard			Pool Wildcat			Dedicated Acreage: 40 Acres	

1. Outline the acreage dedicated to the subject well by colored pencil or hachure marks on the plat below.
2. If more than one lease is dedicated to the well, outline each and identify the ownership thereof (both as to working interest and royalty).
3. If more than one lease of different ownership is dedicated to the well, have the interests of all owners been consolidated by communitization, unitization, force-pooling, etc?

☒ Yes ☐ No If answer is "yes," type of consolidation Forced-Pooled under R-5766

If answer is "no," list the owners and tract descriptions which have actually been consolidated. (Use reverse side of this form if necessary.) _____

No allowable will be assigned to the well until all interests have been consolidated (by communitization, unitization, forced-pooling, or otherwise) or until a non-standard unit, eliminating such interests, has been approved by the Commission.



CERTIFICATION

I hereby certify that the information contained herein is true and complete to the best of my knowledge and belief.

William R. Huck
Name

William R. Huck

Position

Production Engineer

Company

Marathon Oil Company

Date

Aug. 4, 1978

I hereby certify that the well location shown on this plat was plotted from field notes of actual surveys made by me or under my supervision, and that the same is true and correct to the best of my knowledge and belief.

Date Surveyed

August 2, 1978

Registered Professional Engineer and/or Land Surveyor

John W. West
Certificate No.

John W. West

676

Ronald J. Eldon

3239

330 660 990 1320 1650 1980 2310 2640 2970 3300 3630 3960 4290 4620 4950 5280 5610 5940 6270 6600

RECEIVED

AUG 8 1978

**GIL CONSERVATION COMM.
HOBBS, N. M.**