

NEW MEXICO OIL CONSERVATION COMMISSION
WELL LOCATION AND ACREAGE DEDICATION PLAT

Form C-102
Supersedes C-128
Effective 1-1-65

All distances must be from the outer boundaries of the Section

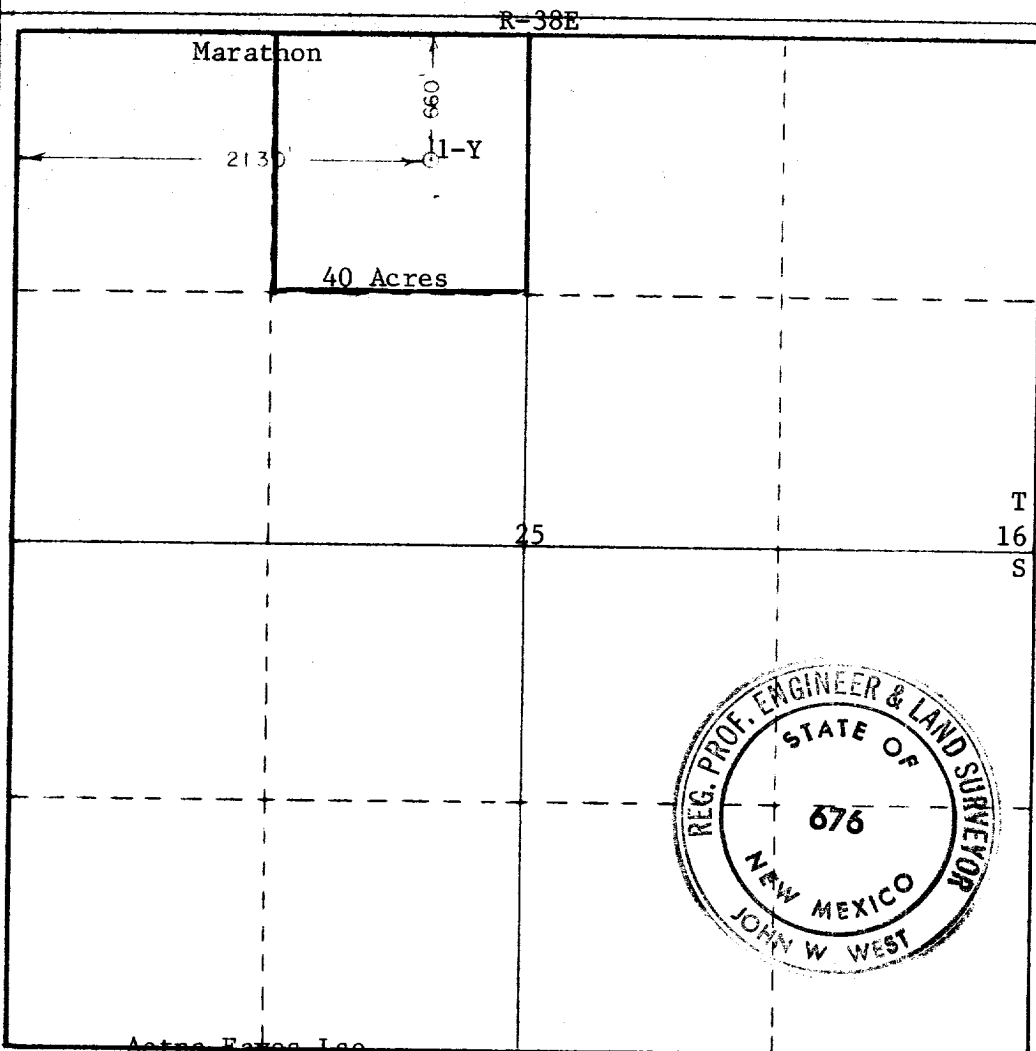
Operator Marathon Oil Co.			Lease Aetna Eaves			Well No. 1Y		
Unit Letter C	Section 25	Township 16 South	Range 38 East	County Lea				
Actual Footage Location of Well: 660 feet from the North line and 2130 feet from the West line								
Ground Level Elev. 3685.5	Producing Formation Drinkard		Pool Wildcat			Dedicated Acreage: 40 Acres		

1. Outline the acreage dedicated to the subject well by colored pencil or hatchure marks on the plat below.
2. If more than one lease is dedicated to the well, outline each and identify the ownership thereof (both as to working interest and royalty).
3. If more than one lease of different ownership is dedicated to the well, have the interests of all owners been consolidated by communitization, unitization, force-pooling, etc?

☒ Yes ☐ No If answer is "yes," type of consolidation Force-Pooled under R-5766

If answer is "no," list the owners and tract descriptions which have actually been consolidated. (Use reverse side of this form if necessary.)

No allowable will be assigned to the well until all interests have been consolidated (by communitization, unitization, forced-pooling, or otherwise) or until a non-standard unit, eliminating such interests, has been approved by the Commission.



CERTIFICATION

I hereby certify that the information contained herein is true and complete to the best of my knowledge and belief.

William R. Huck

Name
William R. Huck

Position
Production Engineer

Company
Marathon Oil Company

Date
Sept. 6, 1978

I hereby certify that the well location shown on this plat was plotted from field notes of actual surveys made by me or under my supervision, and that the same is true and correct to the best of my knowledge and belief.

Date Surveyed
Sept. 5, 1978

Registered Professional Engineer and/or Land Surveyor

John W. West

Certificate No. **John W. West 676**
Ronald J. Eidson 3239

173

RECEIVED

SEP 7 1979
CL. OBSERVATION COMM.
10002 H. 2