

NEW MEXICO OIL CONSERVATION COMMISSION
WELL LOCATION AND ACREAGE DEDICATION PLAT

Form C-102
Supersedes C-128
Effective 1-1-65

All distances must be from the outer boundaries of the Section.

HARPER OIL COMPANY		Lease Snyder		Well No. 1
26	15 South	35 East	Lea	
South		1980	East	
line and		feet from the		East
Dedicated Acreage:		Acre		

1. Acreage dedicated to the subject well by colored pencil or hatchure marks on the plat below.

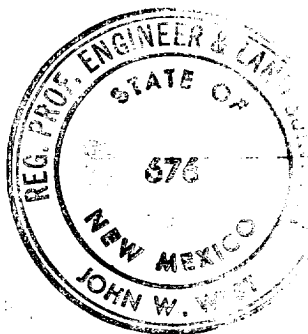
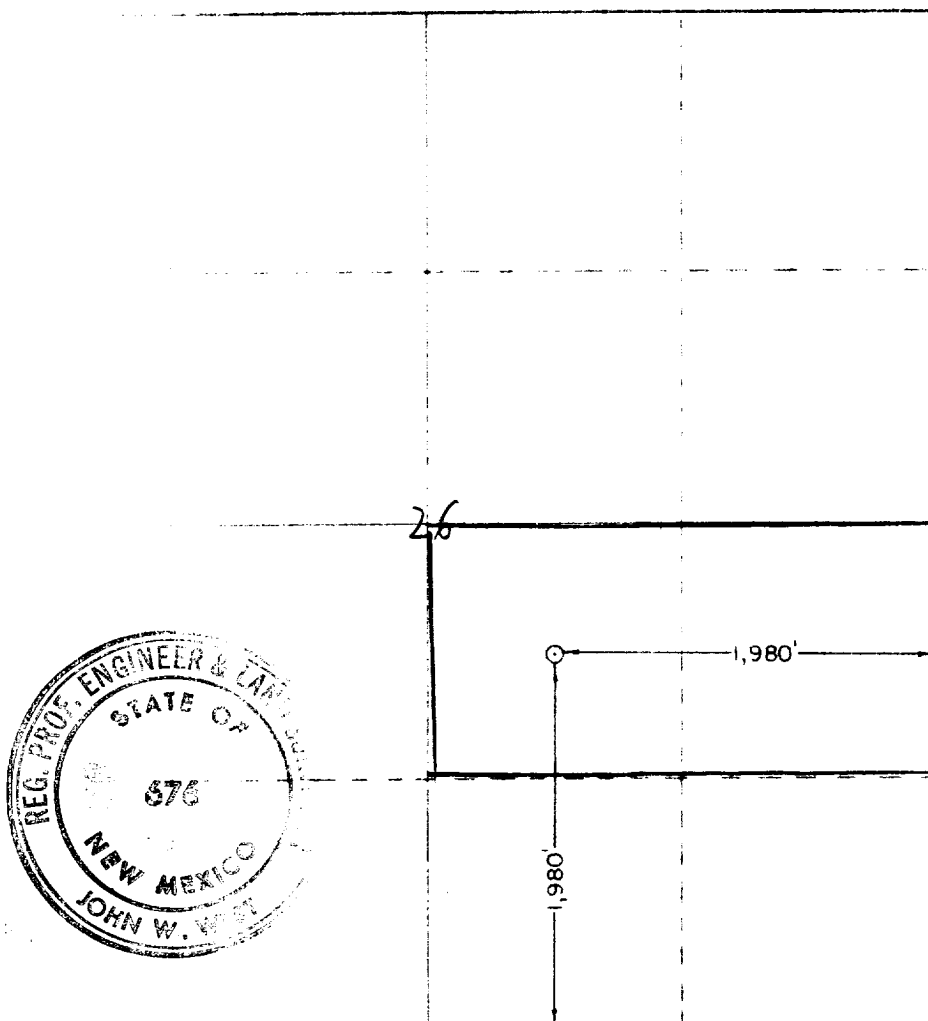
2. If acreage is dedicated to the well, outline each and identify the ownership thereof (both as to working interest and leasehold).

3. If acreage of different ownership is dedicated to the well, have the interests of all owners been consolidated (communization, unitization, force-pooling, etc)?

4. If answer is "yes," type of consolidation _____

5. List the owners and tract descriptions which have actually been consolidated (Use reverse side of this plat if necessary).

6. If acreage assigned to the well until all interests have been consolidated (by communization, unitization, force-pooling, etc) or until a non-standard unit, eliminating such interests, has been approved by the Commission, state the date.



CERTIFICATION

I hereby certify that the information contained herein is true and complete to the best of my knowledge and belief.

Name: *Roy L. Beckett*
Position: VICE-PRESIDENT
Harper Oil Company

Date: June 1, 1979

I hereby certify that the well location shown on this plat was plotted from field notes of actual surveys made by me or under my supervision, and that the same is true and correct to the best of my knowledge and belief.

Date Surveyed: April 25, 1979

Registered Professional Engineer and Licensed Surveyor

John W. West

Certificate No. John W. West 676
Ronald J. Eidson 3239

RECEIVED
JUN 4 1979
OIL CONSERVATION COM. M.

173