

NEW MEXICO OIL CONSERVATION COMMISSION
WELL LOCATION AND ACREAGE DEDICATION PLAT

Form C-102
Supersedes C-128
Effective 1-1-65

All distances must be from the outer boundaries of the Section.

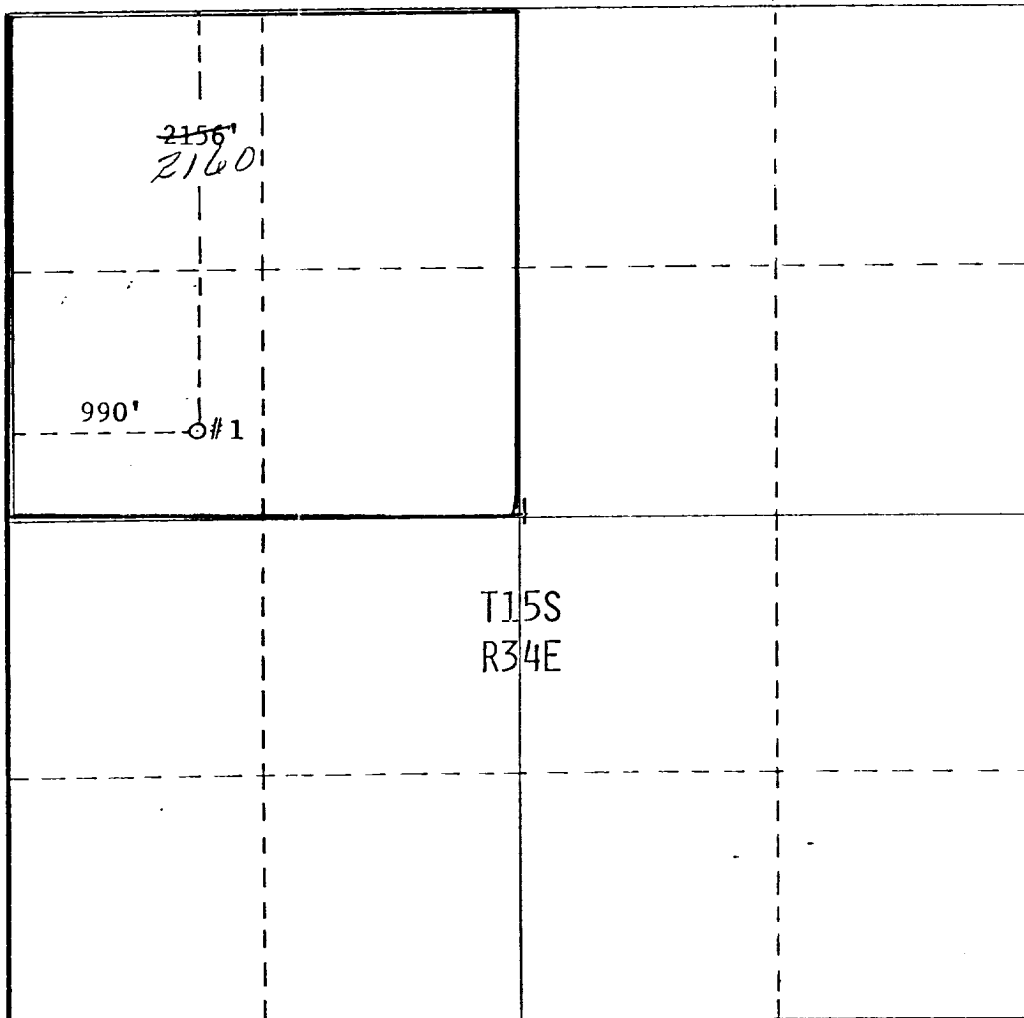
Operator Dorchester Exploration, Inc.			Lease Morton Solid State Unit		Well No. 1
Unit Letter E	Section 4	Township T15S	Range R34E	County Lea	
Actual Footage Location of Well: 990 feet from the West line and 2156 2160 feet from the North line					
Ground Level Elev. 4119	Producing Formation Permo-Penn		Pool Tres Papalotes	Dedicated Acreage: 178.74 Acres	

1. Outline the acreage dedicated to the subject well by colored pencil or hachure marks on the plat below.
2. If more than one lease is dedicated to the well, outline each and identify the ownership thereof (both as to working interest and royalty).
3. If more than one lease of different ownership is dedicated to the well, have the interests of all owners been consolidated by communitization, unitization, force-pooling, etc?

☒ Yes ☐ No If answer is "yes," type of consolidation Communitization Agreement

If answer is "no," list the owners and tract descriptions which have actually been consolidated. (Use reverse side of this form if necessary.)

No allowable will be assigned to the well until all interests have been consolidated (by communitization, unitization, forced-pooling, or otherwise) or until a non-standard unit, eliminating such interests, has been approved by the Commission.



CERTIFICATION

I hereby certify that the information contained herein is true and complete to the best of my knowledge and belief.

Rick O'Bannon
Name Assistant
Proration Administrator

Position
Dorchester Exploration, Inc.

Company
November 5, 1979

Date

I hereby certify that the location shown on this plat was plotted in the field from actual surveys made by me or under my supervision, and that the same is true and correct to the best of my knowledge and belief.

REGISTERED PROFESSIONAL ENGINEER AND LAND SURVEYOR
No. 3959
WILSON D. WATSON, JR.

July 23, 1979

Date Surveyed

W. D. Watson, Jr.
Registered Professional Engineer
and/or Land Surveyor

Certificate No.

3959

