

UNITED STATES
DEPARTMENT OF THE INTERIOR
GEOLOGICAL SURVEY

APPLICATION FOR PERMIT TO DRILL, DEEPEN, OR PLUG BACK

1a. TYPE OF WORK

DRILL ☒DEEPEN ☐PLUG BACK ☐

b. TYPE OF WELL

OIL
WELL ☒GAS
WELL ☐

OTHER

SINGLE
ZONE ☒MULTIPLE
ZONE ☐

2. NAME OF OPERATOR

J.M. HUBER CORPORATION

3. ADDRESS OF OPERATOR

1900 WILCO BUILDING, MIDLAND, TEXAS 79701

4. LOCATION OF WELL (Report location clearly and in accordance with any State requirements.)*

At surface

700' FSL AND 1980' FEL OF SEC. 12

At proposed prod. zone

14. DISTANCE IN MILES AND DIRECTION FROM NEAREST TOWN OR POST OFFICE*

9 MILES NORTHWEST OF LOVINGTON, NEW MEXICO

10. DISTANCE FROM PROPOSED*

LOCATION TO NEAREST
PROPERTY OR LEASE LINE, FT.
(Also to nearest drlg. unit line, if any) 660'

16. NO. OF ACRES IN LEASE

280

17. NO. OF ACRES ASSIGNED
TO THIS WELL

80

18. DISTANCE FROM PROPOSED LOCATION*
TO NEAREST WELL, DRILLING COMPLETED,
OR APPLIED FOR, ON THIS LEASE, FT. 1430'

19. PROPOSED DEPTH

10,400

20. ROTARY OR CABLE TOOLS

ROTARY

21. ELEVATIONS (Show whether DF, RT, GR, etc.)

4054.6 GR

22. APPROX. DATE WORK WILL START*

JUNE 15, 1979

23.

PROPOSED CASING AND CEMENTING PROGRAM

SIZE OF HOLE	SIZE OF CASING	WEIGHT PER FOOT	SETTING DEPTH	QUANTITY OF CEMENT
17 1/2"	13-3/8"	48# H-40	400	CIRCULATE
12 1/4"	8-5/8"	24&28# K55&S80	4400	CIRCULATE
7-7/8"	5-1/2"	15.5&17# K-55	10400	1120 SACKS

SEE ATTACHED FOR: SUPPLEMENTAL DRILLING DATA
BOP SKETCH
DEVELOPMENT PLAN FOR SURFACE USERECEIVED
JUN 19 1979U. S. GEOLOGICAL SURVEY
HOBBS, NEW MEXICO

IN ABOVE SPACE DESCRIBE PROPOSED PROGRAM: If proposal is to deepen or plug back, give data on present productive zone and proposed new productive zone. If proposal is to drill or deepen directionally, give pertinent data on subsurface locations and measured and true vertical depths. Give blowout preventer program, if any.

24.

SIGNED Robert G. Setzler

ROBERT G. SETZLER

TITLE DISTRICT PRODUCTION MANAGER DATE 6-18-79

(This space for Federal or State office use)

PERMIT NO.

APPROVAL

APPROVED BY

TITLE

CONDITIONS OF APPROVAL, IF ANY:

APPROVED
AS AMENDED
JUN 28 1979
ACTING DISTRICT ENGINEER

RECEIVED
JUL - 3 1973
O.C.D. HOBBS, OFFICE

NEW MEXICO OIL CONSERVATION COMMISSION
WELL LOCATION AND ACREAGE DEDICATION PLAT

Form O-104
Supersedes O-128
Effective 1-1-65

All distances must be from the outer boundaries of the Section

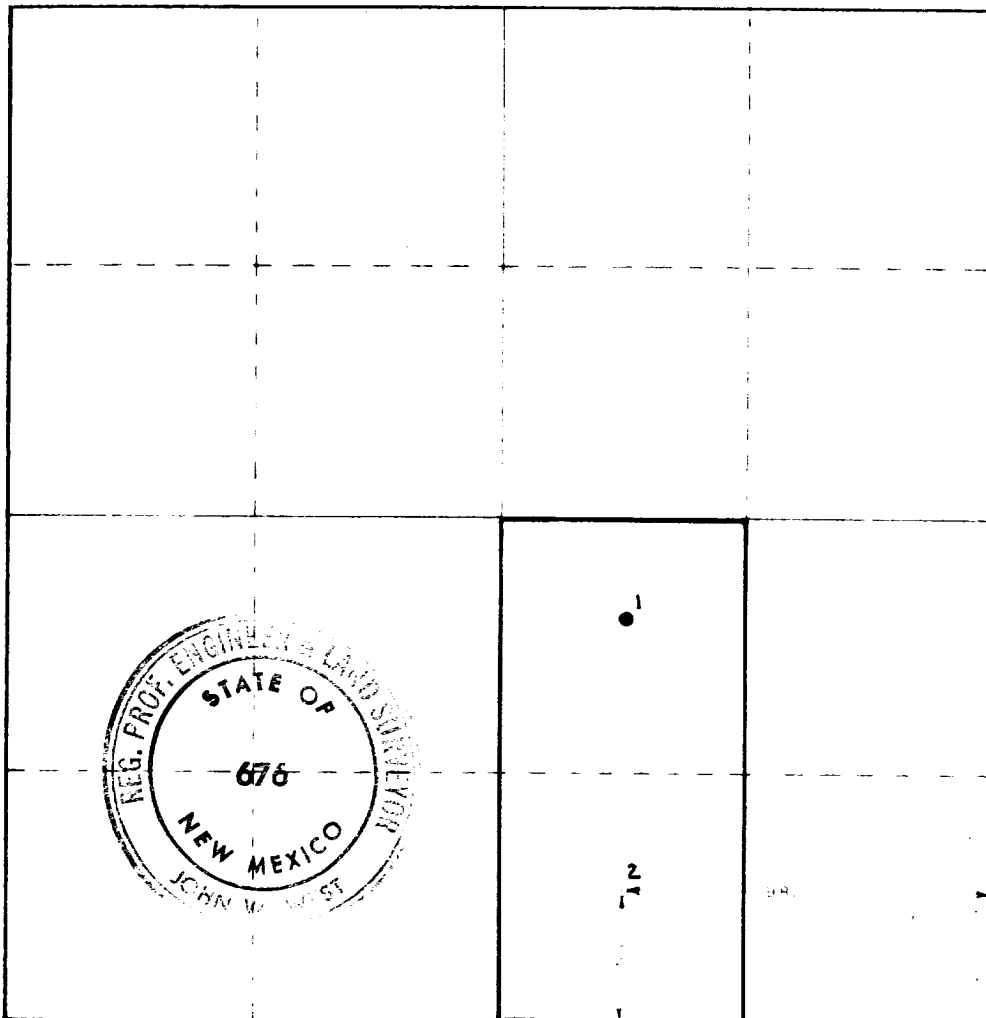
J. M. Huber Corp.		Lessee		Stoltz Federal		Map No. 2	
O	12	1 South	34 East	Lea			
700	feet to the	South	1930	feet to the	East		
4054.6	Producing Formation		MORTON WOLFCAMP		Acres		
		WOLFCAMP				80	

- 1 Outline the acreage dedicated to the subject well by colored pencil or hatchure marks on the plat below.
- 2 If more than one lease is dedicated to the well, outline each and identify the ownership thereof (both as to working interest and royalty)
- 3 If more than one lease of different ownership is dedicated to the well, have the interests of all owners been consolidated by communitization, unitization, force-pooling, etc?

☐ Yes ☐ No If answer is "yes," type of consolidation _____

If answer is "no," list the owners and tract descriptions which have actually been consolidated. (Use reverse side of this form if necessary) _____

No allowable will be assigned to the well until all interests have been consolidated (by communitization, unitization, forced-pooling, or otherwise) or until a non-standard unit, eliminating such interests, has been approved by the Commission.



CERTIFICATION

I hereby certify that the information contained herein is true and complete to the best of my knowledge and belief.

Robert J. Stoltz
DISTRICT PRODUCTION MANAGER
J.M. HUBER CORPORATION

I hereby certify that the well location shown on this plat was plotted from field notes of actual surveys made by me or under my supervision, and that the same is true and correct to the best of my knowledge and belief.

May 10, 1979
Registered Professional Engineer
John W. West
John W. West 676

SUPPLEMENTAL DRILLING DATA

J. M. HUBER CORPORATION
WELL NO. 2 STOLTZ FEDERAL
700' FSL AND 1980' FEL
SEC.12, T.15 S., R.34 E.
LEA COUNTY, NEW MEXICO

1. SURFACE FORMATION: Tertiary
2. ESTIMATED TOPS OF GEOLOGIC MARKERS:

Rustler Anhydrite	1830
Yates	3000
San Andres	4250
Tubb	7300
Abo	8000
Wolfcamp	9600

3. ANTICIPATED POSSIBLE WATER AND HYDROCARBON BEARING ZONES:

Fresh Water	Above 250'
Wolfcamp (Oil)	10200 - 10400

4. PROPOSED CASING AND CEMENTING PROGRAM:

Casing program is shown on Form 9-331 C.

Cement for surface casing will be Class "C" with 2% Calcium Chloride.
Cement to circulate.

Cement for intermediate casing will be approximately 2500 sacks of Halliburton "Light" with 1/4# Flocele and 15# salt per sack tailed in with 200 sacks of Class "C" neat. Cement to circulate.

Cement for production casing will be placed in two stages with DV tool at approximately 8000 feet. First stage will be 200 sacks Halliburton "Light" with 0.6% HALAD tailed in with 250 sacks of Class H. Second stage will be 500 sacks of "Light" tailed in with 150 sacks of Class H. Expected cement top at 3900 feet.

Cement quantities and additives may be varied to suit well conditions.

5. PRESSURE CONTROL EQUIPMENT:

Blowout preventer stack will consist of two 3000# W.P., ram type preventers.

Sketch of BOP stack is attached.

6. CIRCULATING MEDIUM:

0-1700 feet; Fresh water with gel or lime as necessary for viscosity control.

1700-4400 feet; Salt water with salt gel if viscosity control is needed.

4400-10300 feet; Water with gel or other additives as necessary.

10300-T.D.; Low water-loss Benex type mud.

7. AUXILIARY EQUIPMENT:

Drill string safety valves will be maintained on the rig floor in the open position while drilling operations are in progress.

8. TESTING, LOGGING AND CORING PROGRAMS:

Drill stem tests will be made if samples, drilling rate and mud logging data are sufficient to indicate a possible pay zone.

It is planned that electric logs will include a Gamma Ray Sonic log, or equivalent, and a dual induction log.

No cores are planned.

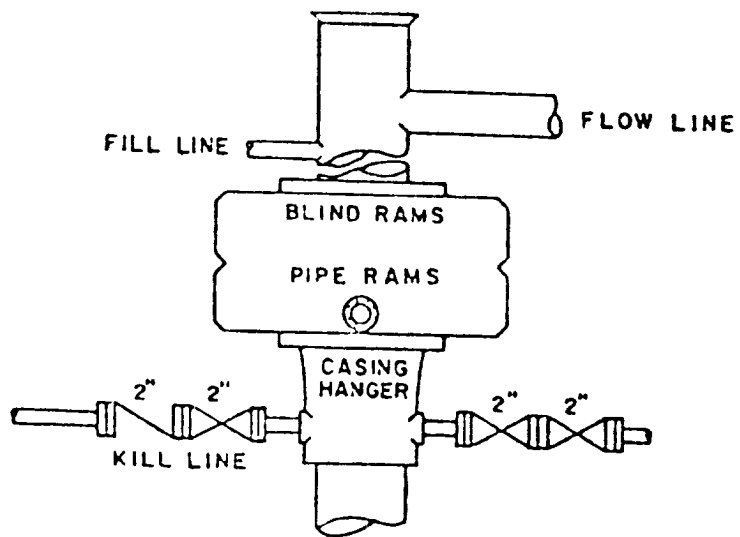
9. ABNORMAL PRESSURES, TEMPERATURES OR HYDROGEN SULFIDE GAS:

None anticipated.

10. ANTICIPATED STARTING DATE:

It is planned that drilling operations will commence about June 15, 1979.

Duration of drilling and completion operations should be about 60 days.



BOP STACK

3000 PSI WORKING PRESSURE

MULTI-POINT SURFACE USE AND OPERATIONS PLAN

J.M. HUBER CORPORATION
WELL NO.2 STOLTZ FEDERAL
700'FSL & 1980'FEL SEC.12,T.15 S.,R.34 E.
LEASE NM 015072

This plan is submitted with the Application for Permit to Drill the above described well. The purpose of the plan is to describe the location of the proposed well, the proposed construction activities and operations plan, the magnitude of necessary surface disturbance involved, and the procedures to be followed in rehabilitating the surface after completion of the operation so that a complete appraisal can be made of the environmental effects associated with the operation.

1. EXISTING ROADS:

- A. Exhibit "A" is a portion of a road map showing the location of the proposed well as staked. From the intersection of State highway 18 and US 82 in Lovington, go 0.1 mile west and turn north on 2nd Street. Turn west on Gum Avenue, where 2nd Street deadends, and go 0.05 miles west to 3rd Street and turn north. Three miles north of Gum Avenue a caliche road goes west. Follow this road 5 miles, turn north for one mile, west for one mile, and north for 0.45 mile. At this point turn west through the cattle guard and go 0.37 mile to the J. M. Huber Corporation well No. 1. The proposed well No. 2 is 1430 feet south of well No. 1.
- B. Exhibit "B" is a plat showing existing roads within a one-mile radius of the wellsite and the planned access road. Existing roads and the planned new road are color coded.
- C. Any repairs to existing roads do not appear necessary at the present time.

2. PLANNED ACCESS ROAD:

- A. Length and Width: The new road will be 12 feet wide and approximately 1200 feet long. This new road is labled and color coded red on Exhibit "B". The center line of the proposed new road, from the beginning to the wellsite, has been staked and flagged with the stakes being visible from any one to the next.
- B. Surfacing Material: Six inches of caliche, watered, compacted and graded.
- C. Maximum Grade: Less than 1 percent.

- D. Turnouts: None required
 - E. Drainage Design: New road will have a drop of 6 inches from the center line on each side.
 - F. Culverts: None required.
 - G. Cuts and Fills: None required.
 - H. Gates, Cattle Guards: None required. No fences involved.
3. LOCATION OF EXISTING WELLS:
- A. Existing wells in the immediate area are shown on Exhibit "B".
4. LOCATION OF EXISTING AND/OR PROPOSED FACILITIES:
- A. Location of the existing tank battery and well No. 1 are shown on Exhibit "C".
 - B. If the proposed well is completed for production the existing tank battery will be used. The flow line from well No.2 to the tank battery will be placed alongside the new road. It will not be buried.
5. LOCATION AND TYPE OF WATER SUPPLY:
- A. It is not planned that a water well be drilled. Water necessary for drilling will be purchased and hauled to the site over existing and proposed roads as shown on Exhibit "B".
6. SOURCE OF CONSTRUCTION MATERIALS:
- A. Caliche for surfacing the road and well pad will be obtained from an existing pit. There is a caliche pit in the southeast corner of section 1 as shown on Exhibit "B". Caliche will be trucked to the site over existing roads.
7. METHODS OF HANDLING WASTE DISPOSAL:
- A. Drill cuttings will be disposed of in the drilling pits.
 - B. Drilling fluids will be allowed to evaporate in the drilling pits until the pits are dry.
 - C. Water produced during tests will be disposed of in the drilling pits. Oil produced during tests will be stored in test tanks until sold.
 - D. Current laws and regulations pertaining to the disposal of human waste will be complied with.

E. Trash, waste paper, garbage, and junk will be buried in a separate trash pit and covered with a minimum of 24 inches of dirt. All waste material will be contained to prevent scattering by the wind. Location of the trash pit is shown on Exhibit "D".

F. All trash and debris will be buried or removed from the wellsite within 30 days after finishing drilling and/or completion operations.

8. ANCILLARY FACILITIES:

A. None required.

9. WELLSITE LAYOUT:

A. Exhibit "D" shows the relative location and dimensions of the well pad, mud pits, reserve pit, trash pit and location of major rig components.

B. Only very minor levelling of the wellsite will be required. No cut and fill will be necessary.

C. The pad and pit area has been staked and flagged.

10. PLANS FOR RESTORATION OF THE SURFACE:

A. After completion of drilling and/or completion operations, all equipment and other material not needed for operations will be removed. Pits will be filled and the location cleaned of all trash and junk to leave the wellsite in an aesthetically pleasing condition as possible.

B. Any unguarded pits containing fluids will be fenced until they are filled.

C. After abandonment, the land surface will be restored in accordance with our agreement with the land owner and with U.S.G.S. requirements.

11. OTHER INFORMATION:

A. Topography: The land surface is relatively level.

B. Soil: The top soil at the wellsite is a sandy loam.

C. Flora and Fauna: The vegetative cover is generally sparse and consists of weeds and native range grasses. Wildlife in the area is that typical of semi-arid desert land and may include coyotes, rabbits, rodents, reptiles, dove and quail.

- D. Ponds and Streams: There are no rivers, streams, lakes or ponds in the area.
- E. Residences and Other Structures: There are no nearby occupied dwellings. There is a windmill approximately 0.3 mile northwest.
- F. Archaeological, Historical and Cultural Sites: None observed in the area.
- G. Land Use: Grazing.
- H. Surface Ownership: Privately owned.

12. OPERATORS REPRESENTATIVE:

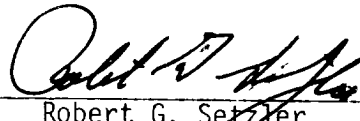
The representative responsible for assuring compliance with the approved surface use plan is:

Robert G. Setzler
1900 Wilco Building
Midland, Texas 75647
Office Phone: 915-682-3794

13. CERTIFICATION:

I hereby certify that I, or persons under my direct supervision, have inspected the proposed drillsite and access route; that I am familiar with the conditions which presently exist; that the statements made in this plan are, to the best of my knowledge true and correct; and, that the work associated with the operations proposed herein will be performed by J. M. Huber Corporation and its sub-contractors in conformity with this plan and the terms and conditions under which it is approved.

6-18-79
Date


Robert G. Setzler
District Production Manager



J.M. HUBER CORPORATION
WELL NO.2 STOLTZ FEDERAL
700'FSL & 1980'FEL SEC.12,T.15 S.,R.34 E.
LEA COUNTY, NM. SCALE: 2" = 1 MI.

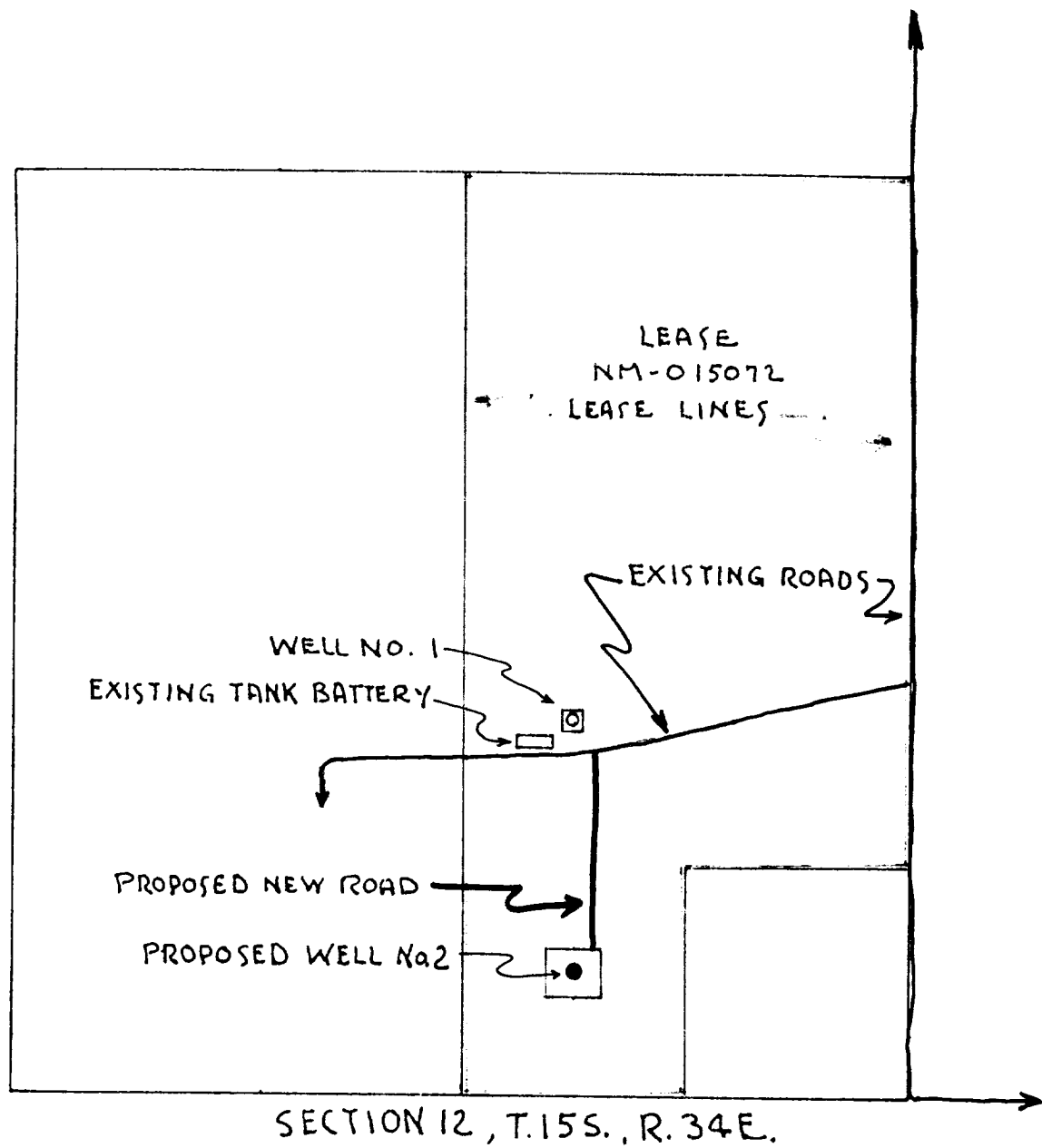


EXHIBIT "C"

J.M. HUBER CORPORATION
 WELL NO.2 STOLTZ FEDERAL
 700'FSL & 1980'FEL SEC.12,T.15 S.,R.34 E.
 LEA COUNTY, NM SCALE: 1" = 1000'

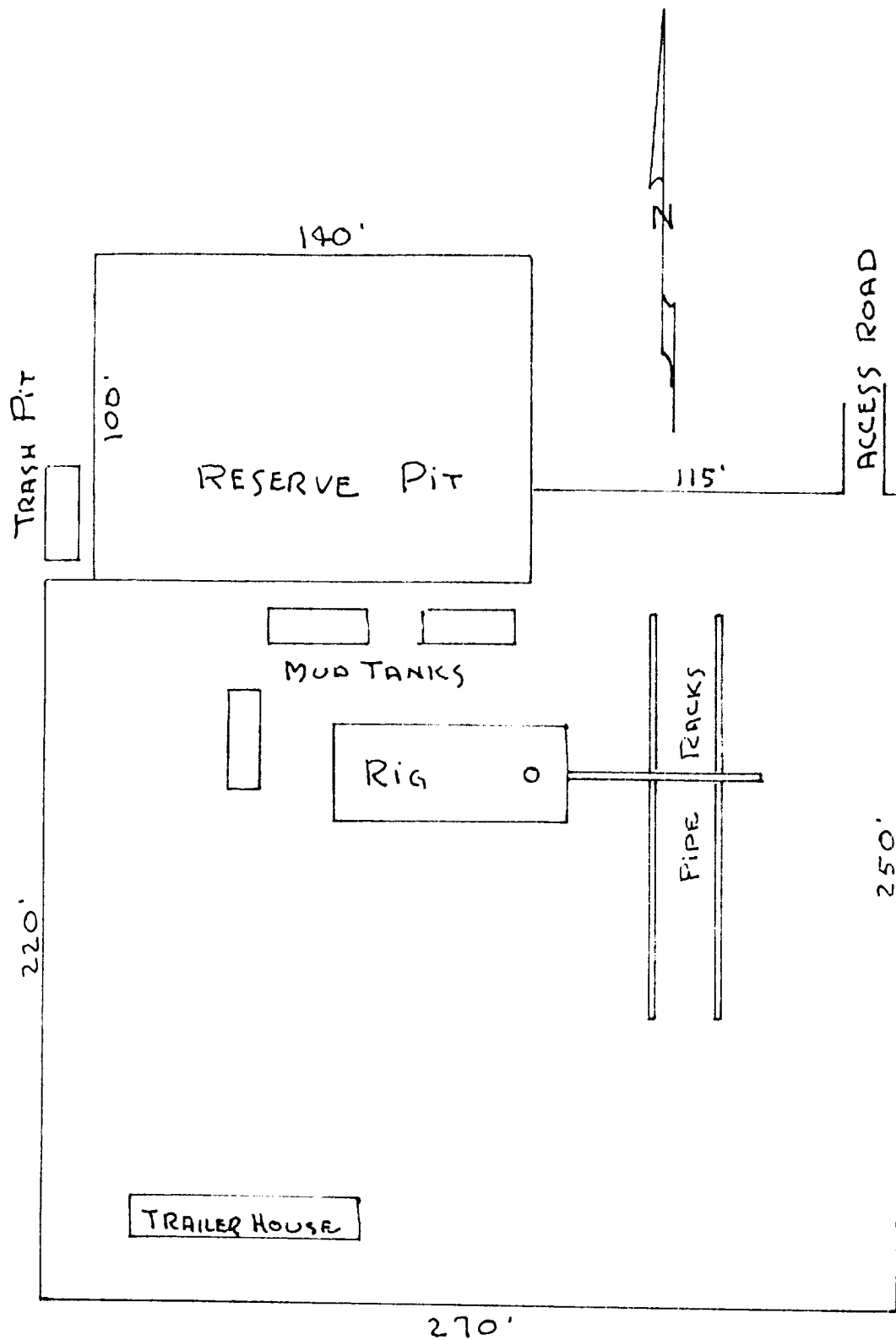
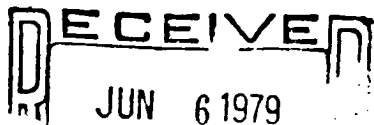


EXHIBIT "D"

RIG LAYOUT
J.M. HUBER CORPORATION
WELL NO.2 STOLTZ FEDERAL
SCALE: 1" = 50'

Hand



J. M. HUBER CORPORATION

1900 WILCO BUILDING
MIDLAND, TEXAS 79701

OIL AND GAS
DIVISION

TELEPHONE
915-682-3794

May 24, 1979

Mrs. Mary Lee Roddy
3110 32nd Street
Lubbock, Texas 79410

RE: SW/4 SE/4 Section 12
T-15S, R-34E
Lea County, New Mexico
14-N-64-C

Dear Mrs. Roddy;

In reference to our conversation please find enclosed our check in the amount of \$500.00 payable to you for surface damages resulting from our drilling on the above acreage.

J. M. Huber Corporation, hereby agrees, to remove surface equipment, level all pits and clean-up the acreage around the location of the above well within 180 days after said well has been plugged and abandoned.

If this is satisfactory, please return one executed copy of this letter to us and deposit the enclosed check in your bank.

Yours very truly,

J. M. HUBER CORPORATION

Robert G. Setzler
District Production Manager

GRB/jem
Attachments

Accepted and Agreed to this 30 day of May 31, 1979.

by Mary Lee Roddy
Mary Lee Roddy