

NO. OF COPIES RECEIVED	
DISTRIBUTION	
SANTA FE	
FILE	
U.S.G.S.	
LAND OFFICE	
OPERATOR	

# NEW MEXICO OIL CONSERVATION COMMISSION

30-025-26636

Form C-101  
Revised 1-4-65

5A. Indicate Type of Lease	
STATE <input checked="" type="checkbox"/>	FED <input type="checkbox"/>
5. State Oil & Gas Lease No.	
LG 3819	

## APPLICATION FOR PERMIT TO DRILL, DEEPEN, OR PLUG BACK

1a. Type of Work		7. Unit Agreement Name	
b. Type of Well OIL WELL <input checked="" type="checkbox"/> GAS WELL <input type="checkbox"/> OTHER <input type="checkbox"/>		8. Farm or Lease Name	
2. Name of Operator		9. Well No.	
3. Address of Operator		10. Field and Pool, or Wildcat	
4. Location of Well		12. County	
UNIT LETTER C LOCATED 550 FEET FROM THE North LINE		Lea	
AND 1980 FEET FROM THE West LINE OF SEC. 27 TWP. 16S RGE. 33E NMPM			
19. Proposed Depth		19A. Formation	20. Rotary or C.T.
11800'		Lower Wolfcamp	Rotary
21. Elevations (Show whether DF, RT, etc.)	21A. Kind & Status Plug. Bond	21B. Drilling Contractor	22. Approx. Date Work will start
4194'	Blanket	Ard Drilling Co.	Soon as approved

23.

## PROPOSED CASING AND CEMENT PROGRAM

SIZE OF HOLE	SIZE OF CASING	WEIGHT PER FOOT	SETTING DEPTH	SACKS OF CEMENT	EST. TOP
17½	13 3/8	48#	approx. 320	225 sx	Circ.
12¼ - 11	8 5/8	24-32#	approx. 4500	1200 sx	Circ.
7 7/8	5½ or 4½	17 - 20# or 10.5 - 11.6#	T.D.	250 sx	

We propose to drill and test to the Cisco and intermediate formations. Surface casing and intermediate casing will be circulated. If commercial pay is encountered, 5½" or 4½" production casing will be run and cemented with at least 600' of cement cover.

MUD PROGRAM: Gel & LCM to 320', native mud & LCM to 4500', fresh water to 8000', starch drispak-KCL to 10200', salt gel-driskpak-KCL to TD.

BOP PROGRAM: BOP's on 13 3/8 to 4500', on 8 5/8" casing to TD, tested and Yellow Jacket.

IN ABOVE SPACE DESCRIBE PROPOSED PROGRAM: IF PROPOSAL IS TO DEEPEN OR PLUG BACK, GIVE DATA ON PRESENT PRODUCTIVE ZONE AND PROPOSED NEW PRODUCTIVE ZONE. GIVE BLOWOUT PREVENTER PROGRAM, IF ANY.

I hereby certify that the information above is true and complete to the best of my knowledge and belief.

Signed [Signature] Title Engineer Date 1/14/80

(This space for State Use)

APPROVED BY [Signature] TITLE SUPERVISOR DISTRICT I DATE JAN 16 1980

CONDITIONS OF APPROVAL, IF ANY:

NEW MEXICO OIL CONSERVATION COMMISSION  
WELL LOCATION AND ACREAGE DEDICATION PLAT

Form C-102  
Supersedes C-128  
Effective 1-1-65

All distances must be from the outer boundaries of the Section.

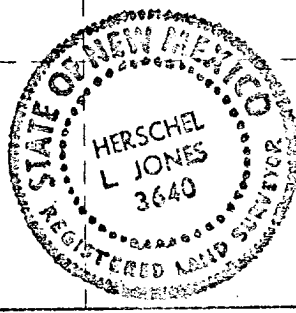
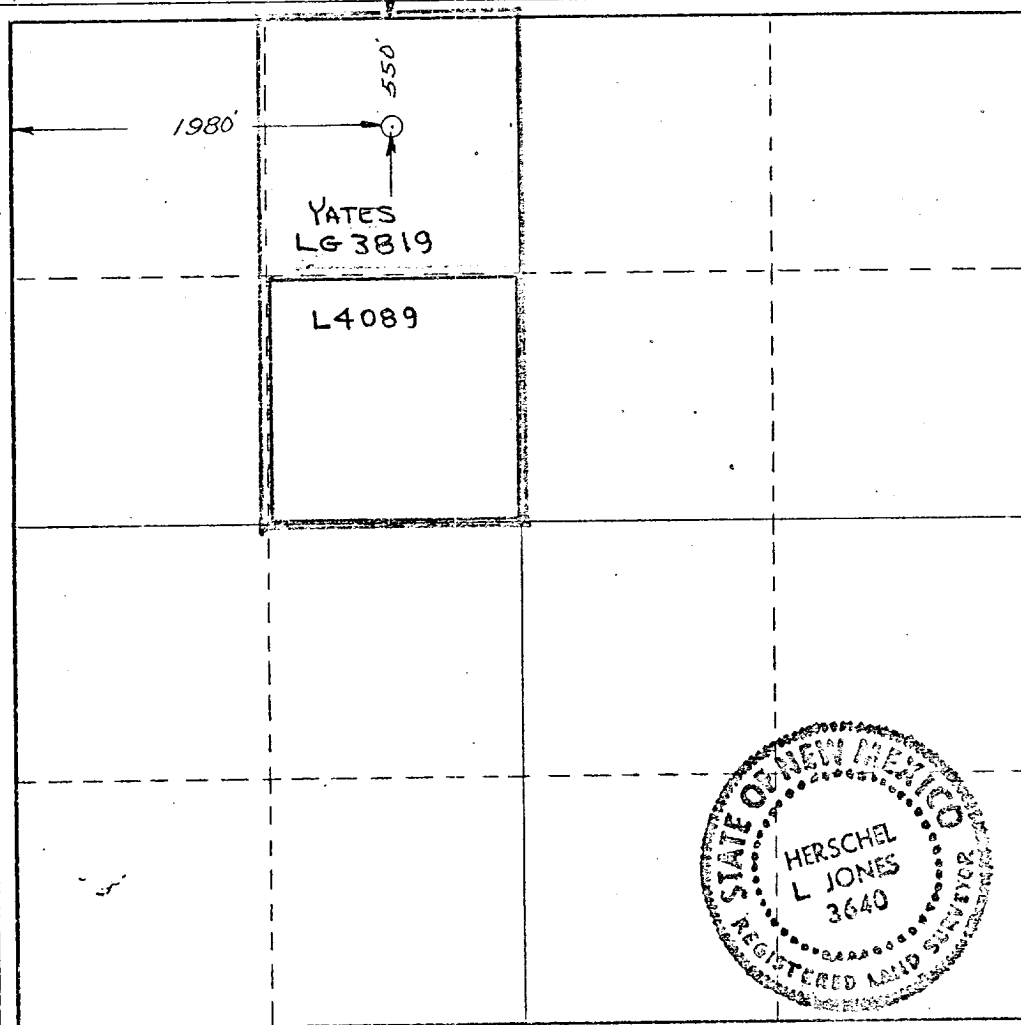
Operator <b>YATES PETROLEUM CORPORATION</b>			Lease <b>SOMBRERO MS STATE</b>		Well No. <b>1</b>
Unit Letter <b>"C"</b>	Section <b>27</b>	Township <b>16 South</b>	Range <b>33 East</b>	County <b>LEA</b>	
Actual Footage Location of Well: <b>550</b> feet from the <b>North</b> line and <b>1980</b> feet from the <b>West</b> line					
Ground Level Elev. <b>4194</b>	Producing Formation <b>LWR WOLF CAMP</b>		Pool <b>KEMNITZ-LWR WLCP</b>		Dedicated Acreage: <b>80</b> Acres

1. Outline the acreage dedicated to the subject well by colored pencil or hachure marks on the plat below.
2. If more than one lease is dedicated to the well, outline each and identify the ownership thereof (both as to working interest and royalty).
3. If more than one lease of different ownership is dedicated to the well, have the interests of all owners been consolidated by communitization, unitization, force-pooling, etc?

☒ Yes ☐ No If answer is "yes," type of consolidation TO BE COMMUNITIZED

If answer is "no," list the owners and tract descriptions which have actually been consolidated. (Use reverse side of this form if necessary.)

No allowable will be assigned to the well until all interests have been consolidated (by communitization, unitization, forced-pooling, or otherwise) or until a non-standard unit, eliminating such interests, has been approved by the Commission.



CERTIFICATION

I hereby certify that the information contained herein is true and complete to the best of my knowledge and belief.

Gliserio Rodriguez  
Name

GLISERIO RODRIGUEZ  
Position

GEOGRAPHER

YATES PETROLEUM CORP  
Company

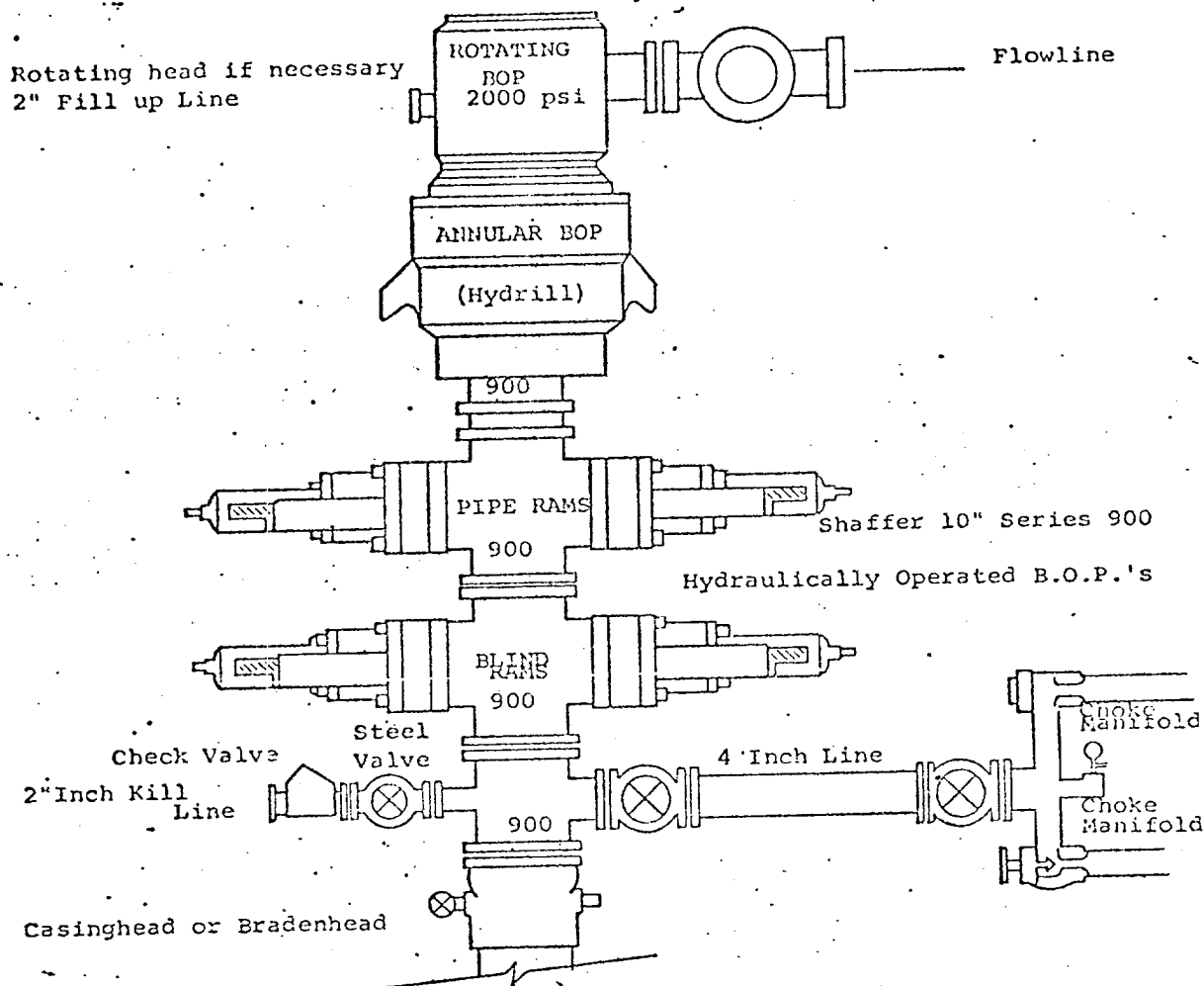
1-15-80  
Date

I hereby certify that the well location shown on this plat was plotted from field notes of actual surveys made by me or under my supervision, and that the same is true and correct to the best of my knowledge and belief.

Date Surveyed  
January 14, 1980

Registered Professional Engineer  
and/or Land Surveyor

Herschel L Jones  
Certificate No. 3640



THE FOLLOWING CONSTITUTE MINIMUM BLOWOUT PREVENTER REQUIREMENTS

1. All preventers to be hydraulically operated with secondary manual controls installed prior to drilling out from under casing.
2. Choke outlet to be a minimum of 4" diameter.
3. Kill line to be of all steel construction of 2" minimum diameter.
4. All connections from operating manifolds to preventers to be all steel. hole or tube a minimum of one inch in diameter.
5. The available closing pressure shall be at least 15% in excess of that required with sufficient volume to operate the B.O.P.'s.
6. All connections to and from preventer to have a pressure rating equivalent to that of the B.O.P.'s.
7. Inside blowout preventer to be available on rig floor.
8. Operating controls located a safe distance from the rig floor.
9. Hole must be kept filled on trips below intermediate casing. Operator not responsible for blowouts resulting from not keeping hole full.
10. D. P. float must be installed and used below zone of first gas intrusion.

RECEIVED

JAN 16 1980

OIL CONSERVATION DIV

171