

**MEXICO OIL CONSERVATION COMMISSION**  
**WELL LOCATION AND ACREAGE DEDICATION PLAT**

Form C-102  
 Supersedes C-128  
 Effective 1-1-65

All distances must be from the outer boundaries of the Section.

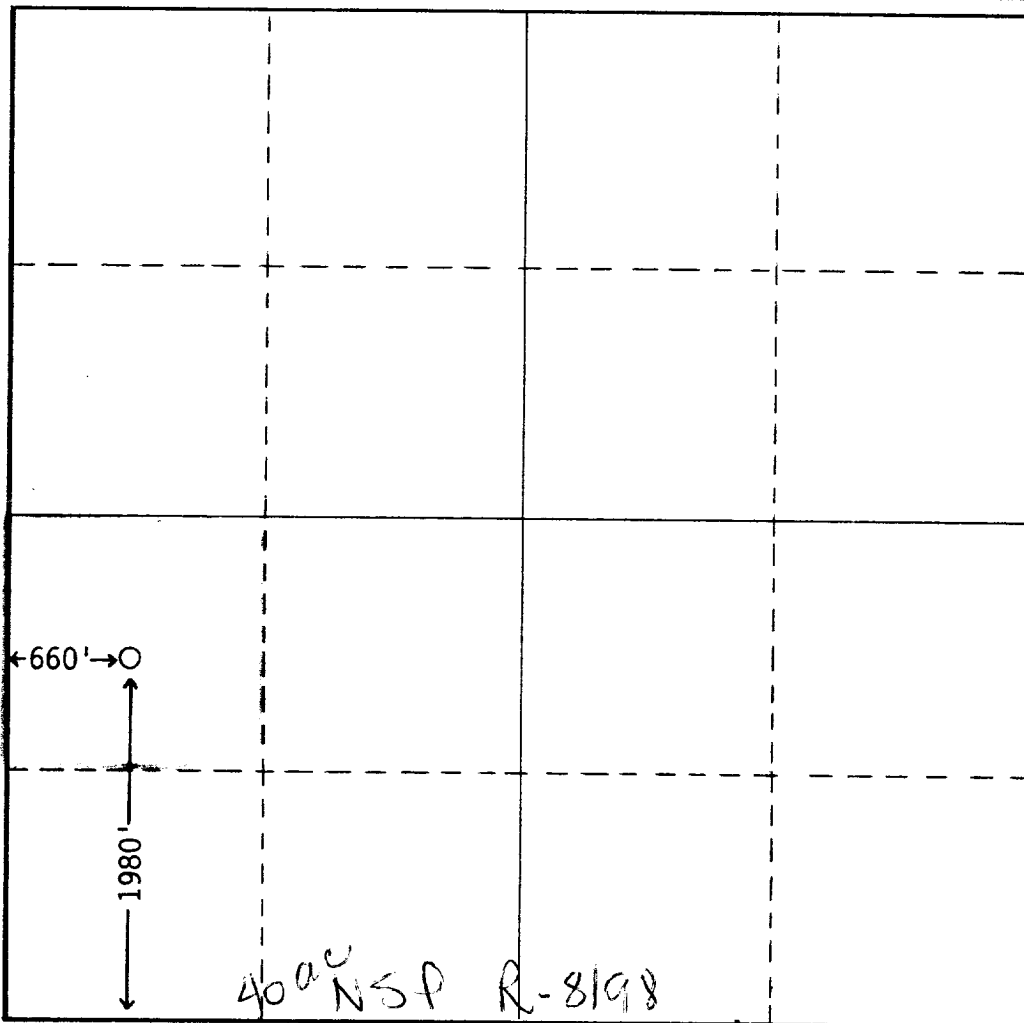
Operator <b>V-F Petroleum Inc.</b>			Lease <b>Arco-State</b>		Well No. <b>1</b>
Unit Letter <b>L</b>	Section <b>35</b>	Township <b>15 South</b>	Range <b>36 East</b>	County <b>Lea</b>	
Actual Footage Location of Well: <b>1980</b> feet from the <b>South</b> line and <b>660</b> feet from the <b>West</b> line					
Ground Level Elev. <b>3863'</b>	Producing Formation <b>Permo-Penn</b>		Pool <b>Dean Permo-Penn</b>		Dedicated Acreage: <b>40</b> Acres

1. Outline the acreage dedicated to the subject well by colored pencil or hachure marks on the plat below.
2. If more than one lease is dedicated to the well, outline each and identify the ownership thereof (both as to working interest and royalty).
3. If more than one lease of different ownership is dedicated to the well, have the interests of all owners been consolidated by communitization, unitization, force-pooling, etc?

☐ Yes    ☐ No    If answer is "yes," type of consolidation \_\_\_\_\_

If answer is "no," list the owners and tract descriptions which have actually been consolidated. (Use reverse side of this form if necessary.) \_\_\_\_\_

No allowable will be assigned to the well until all interests have been consolidated (by communitization, unitization, forced-pooling, or otherwise) or until a non-standard unit, eliminating such interests, has been approved by the Commission.



**CERTIFICATION**

*I hereby certify that the information contained herein is true and complete to the best of my knowledge and belief.*

*Wayne Luna*  
 Name

**Wayne Luna**  
 Position  
**Superintendent**

Company  
**V-F Petroleum Inc.**

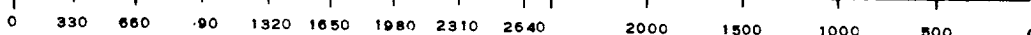
Date

*I hereby certify that the well location shown on this plat was plotted from field notes of actual surveys made by me or under my supervision, and that the same is true and correct to the best of my knowledge and belief.*

Date Surveyed

Registered Professional Engineer and/or Land Surveyor

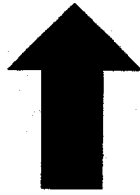
Certificate No.



RECEIVED

JAN 16 1986

O.C.B.  
HOBBS OFFICE



**LTR**



**Job separation sheet**

NO. OF COPIES RECEIVED	
DISTRIBUTION	
SANTA FE	
FILE	
U.S.G.S.	
LAND OFFICE	
OPERATOR	

**NEW MEXICO OIL CONSERVATION COMMISSION  
WELL COMPLETION OR RECOMPLETION REPORT AND LOG**

Form C-105  
Revised 11-1-80

5a. Indicate Type of Lease  
State ☒ Fee ☐  
5. State Oil & Gas Lease No.  
**E1075**

1a. TYPE OF WELL  
OIL WELL ☒ GAS WELL ☐ DRY ☐ OTHER \_\_\_\_\_  
b. TYPE OF COMPLETION  
NEW WELL ☒ WORK OVER ☐ DEEPEN ☐ PLUG BACK ☐ DIFF. RESVR. ☐ OTHER \_\_\_\_\_

7. Unit Agreement Name  
8. Farm or Lease Name  
**Arco-State**  
9. Well No.  
**1**  
10. Field and Pool, or Wildcat  
**Dean-Devonian**

2. Name of Operator  
**V-F Petroleum Inc.**  
3. Address of Operator  
**One Marienfeld Place, Suite 580 Midland, TX 79701**

4. Location of Well  
UNIT LETTER **L** LOCATED **1980** FEET FROM THE **south** LINE AND **660** FEET FROM THE **west** LINE OF SEC. **35** TWP. **15-S** RGE. **36-E** NMPM

12. County  
**Lea**

15. Date Spudded <b>10-7-80</b>	16. Date T.D. Reached <b>1-16-81</b>	17. Date Compl. (Ready to Prod.) <b>2-11-81</b>	18. Elevations (DF, RKB, RT, GR, etc.) <b>3863' GL, 3879' KB</b>	19. Elev. Casinghead <b>3860'</b>
20. Total Depth <b>13,692'</b>	21. Plug Back T.D. <b>13,692'</b>	22. If Multiple Compl., How Many	23. Intervals Drilled By <b>0-13,692'</b>	Rotary Tools Cable Tools

24. Producing Interval(s) of this completion - Top, Bottom, Name  
**13,650' - 13,692' Devonian**  
25. Was Directional Survey Made  
**No**

26. Type Electric and Other Logs Run  
**Dual Induction and Gamma Ray-Neutron Density**  
27. Was Well Cored  
**No**

28. CASING RECORD (Report all strings set in well)					
CASING SIZE	WEIGHT LB./FT.	DEPTH SET	HOLE SIZE	CEMENTING RECORD	AMOUNT PULLED
<b>12 3/4"</b>	<b>36#</b>	<b>347'</b>	<b>17 1/2"</b>	<b>400sx Class C</b>	<b>0</b>
<b>8 5/8"</b>	<b>32# &amp; 24#</b>	<b>4876'</b>	<b>11"</b>	<b>1st stg-1600sx; 2nd stg-2500sx</b>	<b>0</b>
<b>5 1/2"</b>	<b>17# &amp; 20#</b>	<b>13,650'</b>	<b>7 7/8"</b>	<b>1300sx Class H</b>	<b>0</b>

29. LINER RECORD				30. TUBING RECORD		
SIZE	TOP	BOTTOM	SACKS CEMENT	SCREEN	SIZE	DEPTH SET

31. Perforation Record (Interval, size and number)  
**Completion is from:**  
**7 7/8" open hole, 13,650-13,663'**  
**4 5/8" open hole, 13,663-13,692'**

32. ACID, SHOT, FRACTURE, CEMENT SQUEEZE, ETC.	
DEPTH INTERVAL	AMOUNT AND KIND MATERIAL USED
<b>13,650-13,663'</b>	<b>500gal, 15% HCl</b>
<b>13,663-13,692'</b>	<b>1000gal, 15% HCl</b>

33. PRODUCTION

Date First Production <b>2-11-81</b>	Production Method (Flowing, gas lift, pumping - Size and type pump) <b>Pump 2 1/2" x 1 3/4" x 16' H-F ring-type</b>	Well Status (Prod. or Shut-in) <b>Prod</b>
Date of Test <b>2-17-81</b>	Hours Tested <b>24</b>	Choke Size <b>60</b>
Flow Tubing Press.	Casing Pressure <b>60</b>	Calculated 24-Hour Rate <b>138</b>
	Oil - Bbl. <b>138</b>	Gas - MCF <b>8.3</b>
	Water - Bbl. <b>32</b>	Gas - Oil Ratio <b>60-1</b>
	Oil Gravity - API (Corr.) <b>44</b>	

34. Disposition of Gas (Sold, used for fuel, vented, etc.)  
**vented**  
Test Witnessed By  
**Max Pearce**

35. List of Attachments  
**IES Ind log; GR Neu log; DST #1, DST #2; Deviations (see attachments)**

36. I hereby certify that the information shown on both sides of this form is true and complete to the best of my knowledge and belief.

SIGNED V.F. Vasicek V.F. Vasicek TITLE President & Petro. Eng. DATE Feb. 17, 1981

# INSTRUCTIONS

This form is to be filed with the appropriate District Office of the Commission not later than 30 days after the completion of any newly-drilled or deepened well. It shall be accompanied by one copy of all electrical and radio-activity logs run on the well and a summary of all special tests conducted, including drill stem tests. All depths reported shall be measured depths. In the case of directionally drilled wells, true vertical depths shall also be reported. For multiple completions, Items 29 through 34 shall be reported for each zone. The form is to be filed in quintuplicate except on state land, where six copies are required. See Rule 1105.

## INDICATE FORMATION TOPS IN CONFORMANCE WITH GEOGRAPHICAL SECTION OF STATE

Southeastern New Mexico				Northwestern New Mexico			
T. Anky	2012'	T. Canyon		T. Ojo Alamo		T. Penn. "B"	
T. Salt	2118'	T. Strawn	11,448'	T. Kirtland-Fruitland		T. Penn. "C"	
B. Salt	3130'	T. Atoka	11,688'	T. Pictured Cliffs		T. Penn. "D"	
T. Yates	3154'	T. Miss	12,250'	T. Cliff House		T. Leadville	
T. 7 Rivers		T. Devonian	13,632'	T. Menefee		T. Madison	
T. Queen		T. Silurian		T. Point Lookout		T. Elbert	
T. Grayburg		T. Montoya		T. Mancos		T. McCracken	
T. San Andres	4760'	T. Simpson		T. Gallup		T. Ignacio Qtzite	
T. Glorieta	6502'	T. McKee		Base Greenhorn		T. Granite	
T. Paddock		T. Ellenburger		T. Dakota		T.	
T. Blinberry		T. Gr. Wash		T. Morrison		T.	
T. Tubb	7645'	T. Granite		T. Todilto		T.	
T. Drinkard		T. Delaware Sand		T. Entrada		T.	
T. Abo	8401'	T. Bone Springs		T. Wingate		T.	
T. Wolfcamp	10,635'	T.		T. Chinle		T.	
T. Penn.		T.		T. Permian		T.	
T. Cisco (Bough C)		T.		T. Penn. "A"		T.	

## OIL OR GAS SANDS OR ZONES

No. 1, from	11,511'	to	11,585'	No. 4, from		to	
No. 2, from	13,650'	to	13,692'	No. 5, from		to	
No. 3, from		to		No. 6, from		to	

## IMPORTANT WATER SANDS

Include data on rate of water inflow and elevation to which water rose in hole.

No. 1, from	approx 65'	to	152'	feet.	
No. 2, from		to		feet.	
No. 3, from		to		feet.	
No. 4, from		to		feet.	

## FORMATION RECORD (Attach additional sheets if necessary)

From	To	Thickness in Feet	Formation	From	To	Thickness in Feet	Formation
0	347	347	Caliche & red beds				
347	2012	1665	Red beds				
2012	2118	106	Anhydrite				
2118	3130	1012	Salt & Anhydrite				
3130	3350	196	Sand, Shale, Dolomite				
3350	4760	1410	Anhydrite and Lime				
4760	8401	3641	Lime and Shale				
8401	12,250	3849	Shaley Lime				
12,250	13,615	1265	Chert, Lime & Shale				
13,615	13,632	117	Shale w/Lime				
13,632	13,692	60	Dolomite - TD in the Devonian porosity				
RECEIVED							
FEB 13 1981							