

NO. OF COPIES RECEIVED		
DISTRIBUTION		
SANTA FE		
FILE		
U.S.G.S.		
LAND OFFICE		
OPERATOR		

NEW MEXICO OIL CONSERVATION COMMISSION

30-025-27072

Form C-101
Revised 1-1-65

5A. Indicate Type of Lease STATE <input type="checkbox"/> FEE <input checked="" type="checkbox"/>
5. State Oil & Gas Lease No. 2135 A A
7. Unit Agreement Name —
8. Farm or Lease Name Montieth
9. Well No. 2
10. Field No. and Name UNDESIGNATED Northeast Lovington Penn
12. County Lea
19. Proposed Depth 11,800
19A. Formation Strawn
20. Rotary or C.T. Rotary
21. Elevations (Show whether DF, RT, etc.) 3855 GL
21A. Kind & Status Plug. Bond Single well
21B. Drilling Contractor McVay
22. Approx. Date Work will start December 15, 1980

APPLICATION FOR PERMIT TO DRILL, DEEPEN, OR PLUG BACK

1a. Type of Work DRILL <input checked="" type="checkbox"/> DEEPEN <input type="checkbox"/> PLUG BACK <input type="checkbox"/>
b. Type of Well OIL WELL <input checked="" type="checkbox"/> GAS WELL <input type="checkbox"/> OTHER <input type="checkbox"/> SINGLE ZONE <input checked="" type="checkbox"/> MULTIPLE ZONE <input type="checkbox"/>
2. Name of Operator Bass Enterprises Production Co.
3. Address of Operator P.O. Box 2760 ; Midland, Texas 79702
4. Location of Well UNIT LETTER H LOCATED 1980 FEET FROM THE North LINE AND 510 FEET FROM THE East LINE OF SEC. 13 TWP. 16S RGE. 36E NMPM
23. PROPOSED CASING AND CEMENT PROGRAM

SIZE OF HOLE	SIZE OF CASING	WEIGHT PER FOOT	SETTING DEPTH	SACKS OF CEMENT	EST. TOP
15"	11 3/4"	42 #	360	500 SX	Surface
11"	8 5/8"	24 #	3500	1200 SX	Surface
7 7/8"	5 1/2"	17 #	TD	1000 SX	7000'

BOP Diagrams Attached BEPCO II & IV

Gas is not dedicated.

APPROVAL VALID
FOR 90 DAYS UNLESS
DRILLING COMMENCED,

EXPIRES 1/3/81

IN ABOVE SPACE DESCRIBE PROPOSED PROGRAM: IF PROPOSAL IS TO DEEPEN OR PLUG BACK, GIVE DATA ON PRESENT PRODUCTIVE ZONE AND PROPOSED NEW PRODUCTIVE ZONE. GIVE BLOWOUT PREVENTER PROGRAM, IF ANY.

hereby certify that the information above is true and complete to the best of my knowledge and belief.

Signed David L. Davis Title Asst. Div. Engr. Date 10/3/80

(This space for State Use)

APPROVED BY [Signature] TITLE SUPERVISOR DISTRICT I DATE OCT 6 1980
CONDITIONS OF APPROVAL, IF ANY:

NEW MEXICO OIL CONSERVATION COMMISSION
WELL LOCATION AND ACREAGE DEDICATION PLAT

Form C-102
Supersedes C-128
Effective 1-1-65

All distances must be from the outer boundaries of the Section.

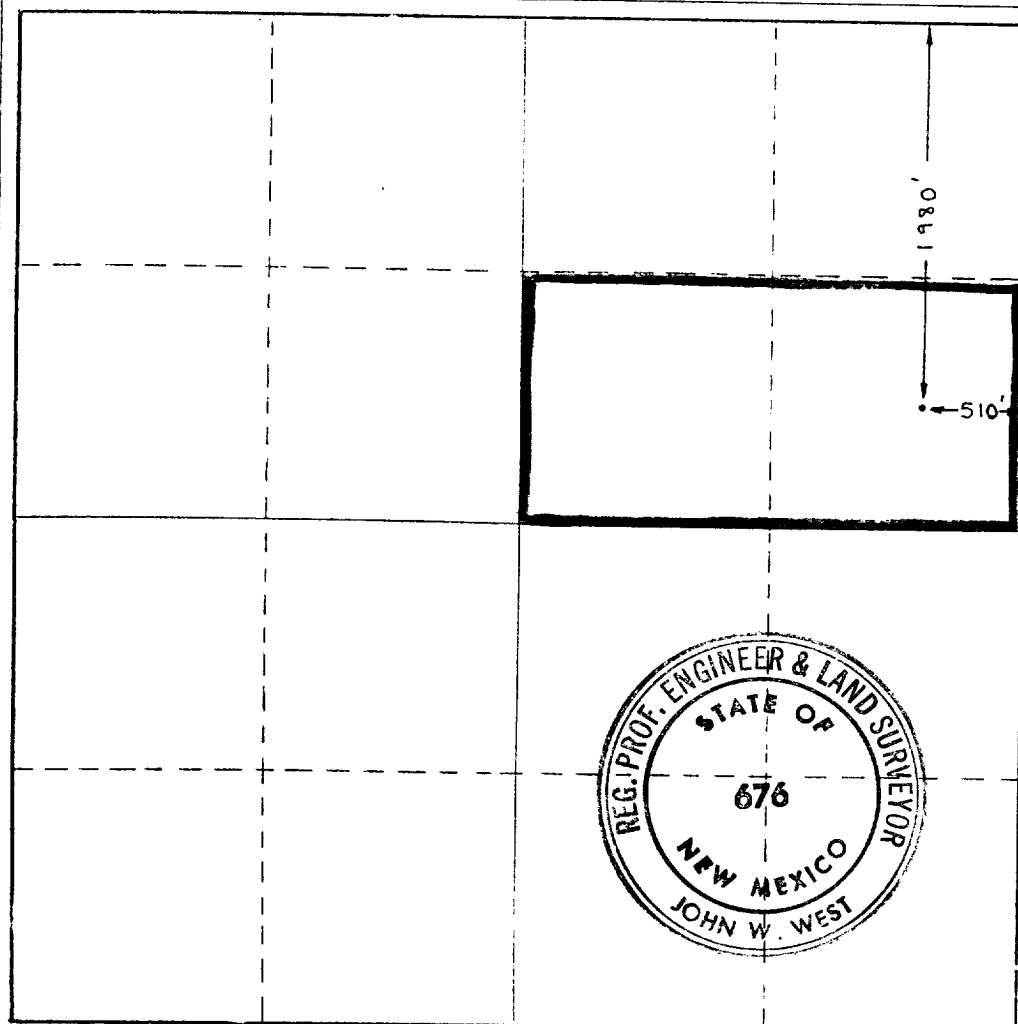
Operator Bass Enterprises Production Co.		Lease Montieth		Well No. 2	
Unit Letter H	Section 13	Township 16S	Range 36E	County Lea	
Actual Footage Location of Well: 1980 feet from the North line and 510 feet from the East line					
Ground Level Elev. 3855	Producing Formation Strawn		Pool Northeast Lovington Penn		Dedicated Acreage: 80 Acres

1. Outline the acreage dedicated to the subject well by colored pencil or hachure marks on the plat below.
2. If more than one lease is dedicated to the well, outline each and identify the ownership thereof (both as to working interest and royalty).
3. If more than one lease of different ownership is dedicated to the well, have the interests of all owners been consolidated by communitization, unitization, force-pooling, etc?

☐ Yes ☒ No If answer is "yes," type of consolidation _____

If answer is "no," list the owners and tract descriptions which have actually been consolidated. (Use reverse side of this form if necessary.) _____

No allowable will be assigned to the well until all interests have been consolidated (by communitization, unitization, forced-pooling, or otherwise) or until a non-standard unit, eliminating such interests, has been approved by the Commission.



CERTIFICATION

I hereby certify that the information contained herein is true and complete to the best of my knowledge and belief.

David L. Davis

Name

David L. Davis

Position

Asst. Div. Engr.

Company

Bass Enterprises Prod. Co.

Date

10-3-80

I hereby certify that the well location shown on this plat was plotted from field notes of actual surveys made by me or under my supervision, and that the same is true and correct to the best of my knowledge and belief.

Date Surveyed

10-4-80

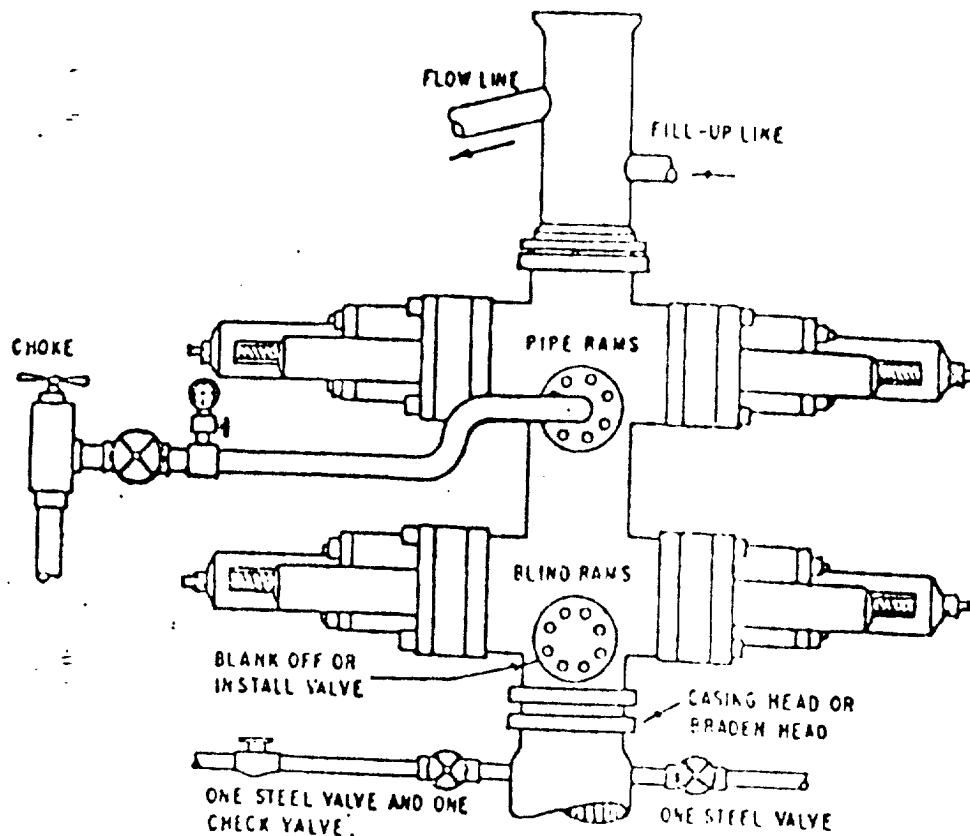
Registered Professional Engineer and/or Land Surveyor

John W. West

Certificate No.

676

0 330 660 990 1320 1650 1980 2310 2640 2000 1500 1000 500



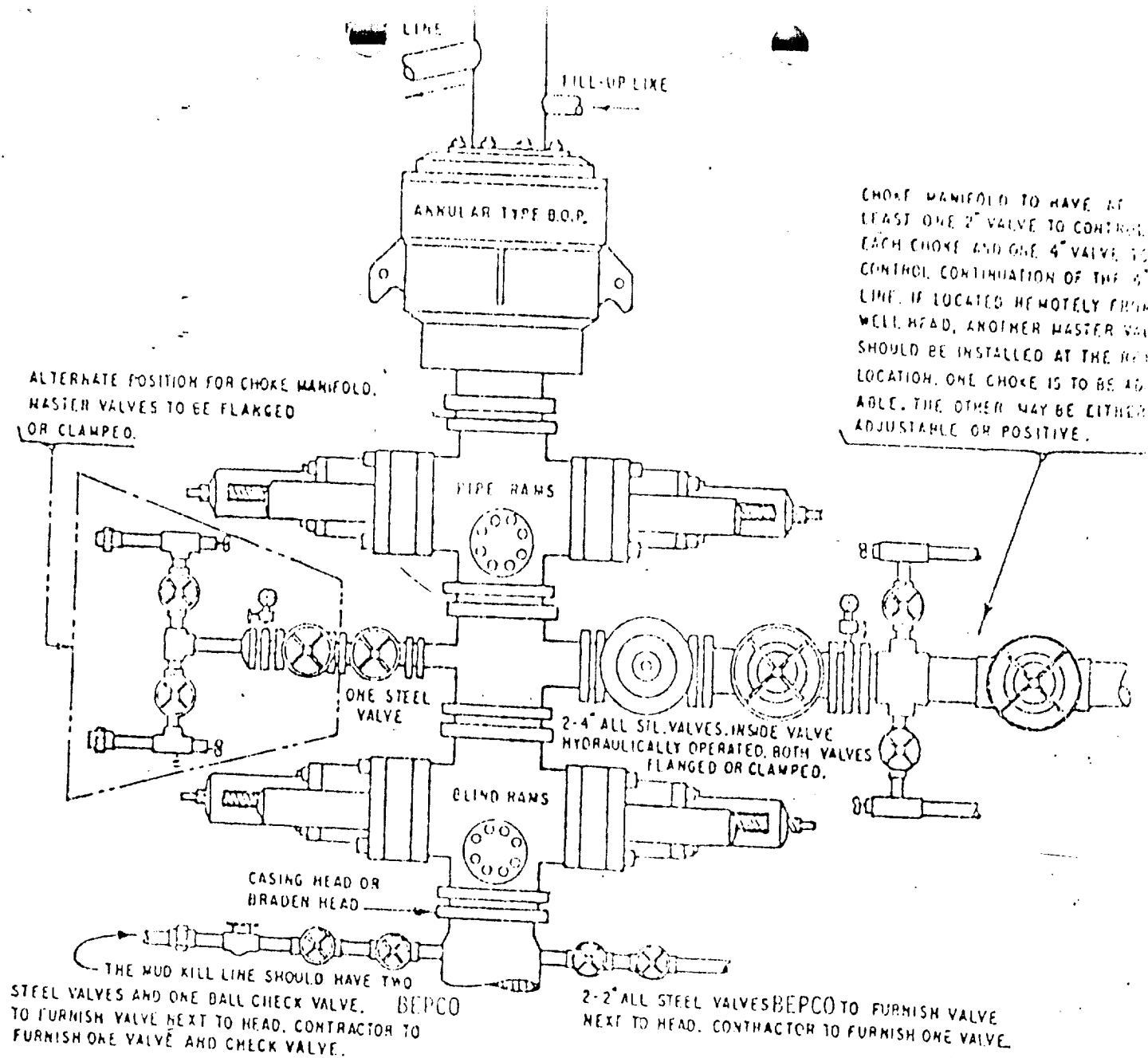
THE FOLLOWING CONSTITUTE MINIMUM BLOWOUT PREVENTER REQUIREMENTS

- ONE DOUBLE GATE BLOWOUT PREVENTER WITH LOWER RAMS BLIND AND UPPER RAMS FOR PIPE, ALL HYDRAULICALLY CONTROLLED. OPENING ON PREVENTERS BETWEEN RAMS.
- OPENING TO BE FLANGED, STUDDED OR CLAMPED AND AT LEAST TWO INCHES DIAMETER.
- ALL CONNECTIONS FROM OPERATING MANIFOLD TO PREVENTERS TO BE ALL STEEL HOSE OR TUBE A MINIMUM OF ONE INCH IN DIAMETER.
- THE AVAILABLE CLOSING PRESSURE SHALL BE AT LEAST 15% IN EXCESS OF THAT REQUIRED WITH SUFFICIENT VOLUME TO OPERATE THE PREVENTERS.
- ALL CONNECTIONS TO AND FROM PREVENTERS TO HAVE A PRESSURE RATING EQUIVALENT TO THAT OF THE B.O.P.'s.
- HANDUAL CONTROLS TO BE INSTALLED BEFORE DRILLING CEMENT PLUG.
- VALVE TO CONTROL FLOW THROUGH DRILL PIPE TO BE LOCATED ON RIG FLOOR.
- CHOKER MAY BE EITHER POSITIVE OR ADJUSTABLE. choke spool may be used between rams.

BEPCO II
ONE HYDRAULIC DUAL BLOWOUT PREVENTER

1000 # WP

1000 #



THE FOLLOWING CONSTITUTE MINIMUM BLOWOUT PREVENTER REQUIREMENTS

- CONDITIONS MAY BE MET BY AN ANNULAR TYPE BLOWOUT PREVENTER ON TOP AND A CHOKE SPOOL BELOW AND EITHER
 - TWO RAM TYPE BLOWOUT PREVENTERS BELOW THE SPOOL, THE LOWER UNIT CONTAINING BLIND RAMS AND THE UPPER UNIT CONTAINING PIPE RAMS, OR
 - A DUAL BLOWOUT PREVENTER BELOW THE SPOOL WITH BLIND RAMS ON BOTTOM AND PIPE RAMS ON TOP.
- OPENING ON CHOKE SPOOL TO BE FLANGED, STUDDED OR CLAMPED.
- ALL CONNECTIONS FROM OPERATING MANIFOLDS TO PREVENTERS TO BE ALL STEEL HOSE OR TUBE A MINIMUM OF ONE INCH IN DIAMETER.
- THE AVAILABLE CLOSING PRESSURE SHALL BE AT LEAST 15% IN EXCESS OF THAT REQUIRED WITH SUFFICIENT VOLUME TO OPERATE THE BOP.
- ALL CONNECTIONS TO AND FROM PREVENTER TO HAVE A PRESSURE RATING EQUIVALENT TO THAT OF THE BOP.
- MANUAL CONTROLS TO BE INSTALLED BEFORE DRILLING CEMENT PLUG.
- KELLY COCK TO BE INSTALLED ON KELLY.
- INSIDE BLOWOUT PREVENTER TO BE AVAILABLE ON RIG FLOOR.
- DUAL OPERATING CONTROLS ONE LOCATED BY DRILLERS POSITION AND THE OTHER LOCATED A SAFE DISTANCE FROM THE RIG FLOOR.

BLPCO IV

THREE CLOSURE HYDRAULIC BLOWOUT PREVENTERS

3000# WP

3000# TEST PRESSURE

113

11/11/11

001 31890

11/11/11 11:11