

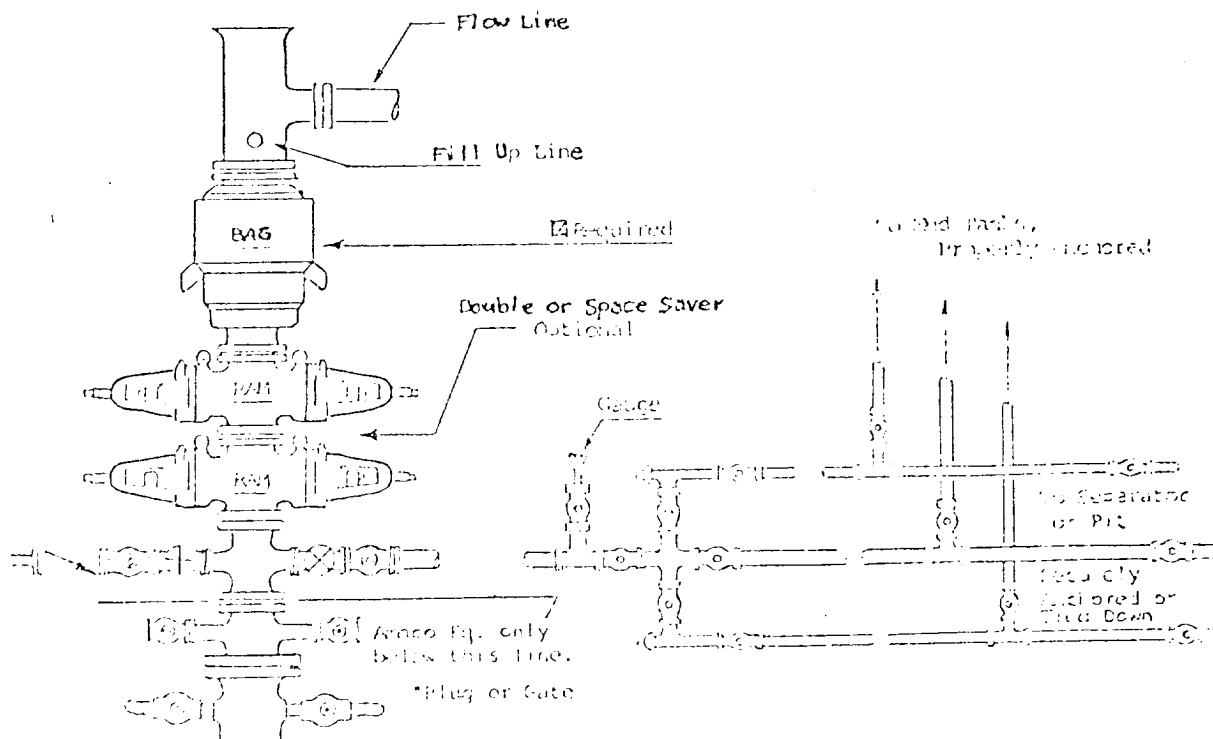
1. BOP'S TO BE FLUID OPERATED.
2. BOP'S AND ALL FITTINGS MUST BE IN GOOD CONDITION AND RATED AT 3000 PSI W.P. MINIMUM.
3. EQUIPMENT THROUGH WHICH BIT MUST PASS SHALL BE AT LEAST AS LARGE AS CASING SIZE BEING DRILLED THROUGH.
4. NIPPLE ABOVE BOP'S SHALL BE SAME SIZE AS LAST CASING SET.
5. UPPER KELLY COCK IS REQUIRED AND SHALL BE 3000# W.P. MINIMUM.
6. T. I. W. OR COMPARABLE SAFETY VALVE SHALL BE AVAILABLE ON RIG FLOOR WITH CONNECTION OR SUBS TO FIT ANY TOOL JOINT IN THE STRING. VALVE TO BE FULL BORE 5000# MIN.
7. VALVE NEXT TO SPOOL SHALL BE 4". OTHER EQUIPMENT MAY BE 3" OR 4". ALL CHOKE MANIFOLD EQUIPMENT SHALL BE FLANGED. FLOW LINE FROM MANIFOLD TO BE MINIMUM OF 3" AND STRAIGHT AS POSSIBLE WITH MINIMUM BENDS.
8. FLUID LINES FROM ACCUMULATOR TO BOP'S AND ALL REMOTE CONTROL FLUID LINES SHALL BE STEEL, AND RATED AT OR ABOVE MAXIMUM ACCUMULATOR PRESSURE. LINES SHALL BE ROUTED IN BUNDLES AND ADEQUATELY PROTECTED FROM DAMAGE.
9. USE RAMS IN FOLLOWING POSITIONS:*

	<u>DRILLING</u>	<u>RUNNING CASING</u>
UPPER RAM	DRILL PIPE	CASING
LOWER RAM	BLIND	BLIND

*AMOCO AREA SUPT. MAY REVERSE LOCATION OF RAMS.

10. CHOKE MANIFOLD, BEYOND SECOND VALVE FROM CROSS MAY BE OPTIONALLY POSITIONED OUTSIDE OF SUBSTRUCTURE.
11. EXTENSIONS AND HAND WHEELS TO BE INSTALLED AND BRACED AT ALL TIMES.
12. TWO INCH (2") LINES AND VALVES ARE PERMITTED ON THE KILL LINE.

NOTE: ALL UNMARKED VALVES MAY BE PLUG OR GATE VALVE, METAL TO METAL SEAL.



RECEIVED

OCT 30 1990

LIBRARY OF CONGRESS

413