

NO. OF COPIES RECEIVED	
DISTRIBUTION	
SANTA FE	
FILE	
U.S.G.S.	
LAND OFFICE	
OPERATOR	

NEW MEXICO OIL CONSERVATION COMMISSION

Form C-101
Revised 1-1-65

30-025-27216

5A. Indicate Type of Lease STATE <input type="checkbox"/> FEE <input checked="" type="checkbox"/>	
5. State Oil & Gas Lease No. 2135-9A	
7. Unit Agreement Name -----	
8. Farm or Lease Name MONTIETH	
9. Well No. 3	
10. Field and Locality UNDESIGNATED N.E. Lovingston Penn	
12. County Lea	
19. Proposed Depth 11,900'	19A. Formation Strawn
20. Rotary or C.T. Rotary	
21. Elevations (Show whether DF, RT, etc.) 3859.9 GL	21A. Kind & Status Plug. Bond Single Well Blanket
21B. Drilling Contractor Unknown	
22. Approx. Date Work will start Upon Approval	

APPLICATION FOR PERMIT TO DRILL, DEEPEN, OR PLUG BACK

1a. Type of Work

b. Type of Well DRILL ☒ DEEPEN ☐ PLUG BACK ☐
OIL WELL ☒ GAS WELL ☐ OTHER ☐ SINGLE ZONE ☒ MULTIPLE ZONE ☐

2. Name of Operator
BASS ENTERPRISES PRODUCTION CO.

3. Address of Operator
P. O. Box 2760, Midland, Texas 79702

4. Location of Well
UNIT LETTER J LOCATED 2130' FEET FROM THE South LINE
AND 1980' FEET FROM THE East LINE OF SEC. 13 TWP. 16S RGE. 36E NMPM

23.

PROPOSED CASING AND CEMENT PROGRAM

SIZE OF HOLE	SIZE OF CASING	WEIGHT PER FOOT	SETTING DEPTH	SACKS OF CEMENT	EST. TOP
15"	11-3/4"	42#	360'	500 SX	surface
11"	8-5/8"	24#	4925'	1200 SX	surface
7- 7/8"	5-1/2"	17#	TD	1000 SX	7000'

BOP Diagrams attached: BEPCO II and BEPCO IV

APPROVAL VALID
FOR 90 DAYS UNLESS
DRILLING COMMENCED,

EXPIRES 4/12/81

IN ABOVE SPACE DESCRIBE PROPOSED PROGRAM: IF PROPOSAL IS TO DEEPEN OR PLUG BACK, GIVE DATA ON PRESENT PRODUCTIVE ZONE AND PROPOSED NEW PRODUCTIVE ZONE. GIVE BLOWOUT PREVENTER PROGRAM, IF ANY.

I hereby certify that the information above is true and complete to the best of my knowledge and belief.

Signed Stephen Smith Title Engineering Assistant Date December 31, 1980

(This space for State Use)

APPROVED BY [Signature] TITLE SUPERVISOR DISTRICT DATE JAN 12 1981

CONDITIONS OF APPROVAL, IF ANY:

**NEW MEXICO OIL CONSERVATION COMMISSION
WELL LOCATION AND ACREAGE DEDICATION PLAT**

Form C-102
Supersedes C-128
Effective 1-4-65

All distances must be from the outer boundaries of the Section.

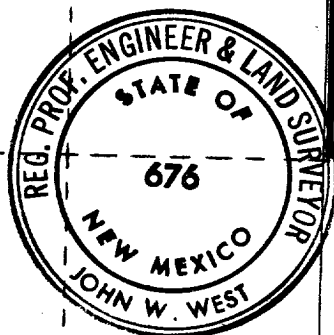
Operator Bass Enterprises Production Co.			Lease Montieth		Well No. 3
Unit Letter J	Section 13	Township 16 South	Range 36 East	County Lea	
Actual Footage Location of Well: 2130 feet from the South line and 1980 feet from the East line					
Ground Level Elev. 3859.9	Producing Formation Strawn		Pool N. E. Lovington Penn	Dedicated Acreage: 80 Acres	

1. Outline the acreage dedicated to the subject well by colored pencil or hachure marks on the plat below.
2. If more than one lease is dedicated to the well, outline each and identify the ownership thereof (both as to working interest and royalty).
3. If more than one lease of different ownership is dedicated to the well, have the interests of all owners been consolidated by communitization, unitization, force-pooling, etc?

☐ Yes ☐ No If answer is "yes," type of consolidation _____

If answer is "no," list the owners and tract descriptions which have actually been consolidated. (Use reverse side of this form if necessary.) _____

No allowable will be assigned to the well until all interests have been consolidated (by communitization, unitization, forced-pooling, or otherwise) or until a non-standard unit, eliminating such interests, has been approved by the Commission.



CERTIFICATION

I hereby certify that the information contained herein is true and complete to the best of my knowledge and belief.

Stephen Smith

Name
Stephen Smith

Position
Engineering Assistant

Company
Bass Enterprises Production Co.

Date
December 31, 1980

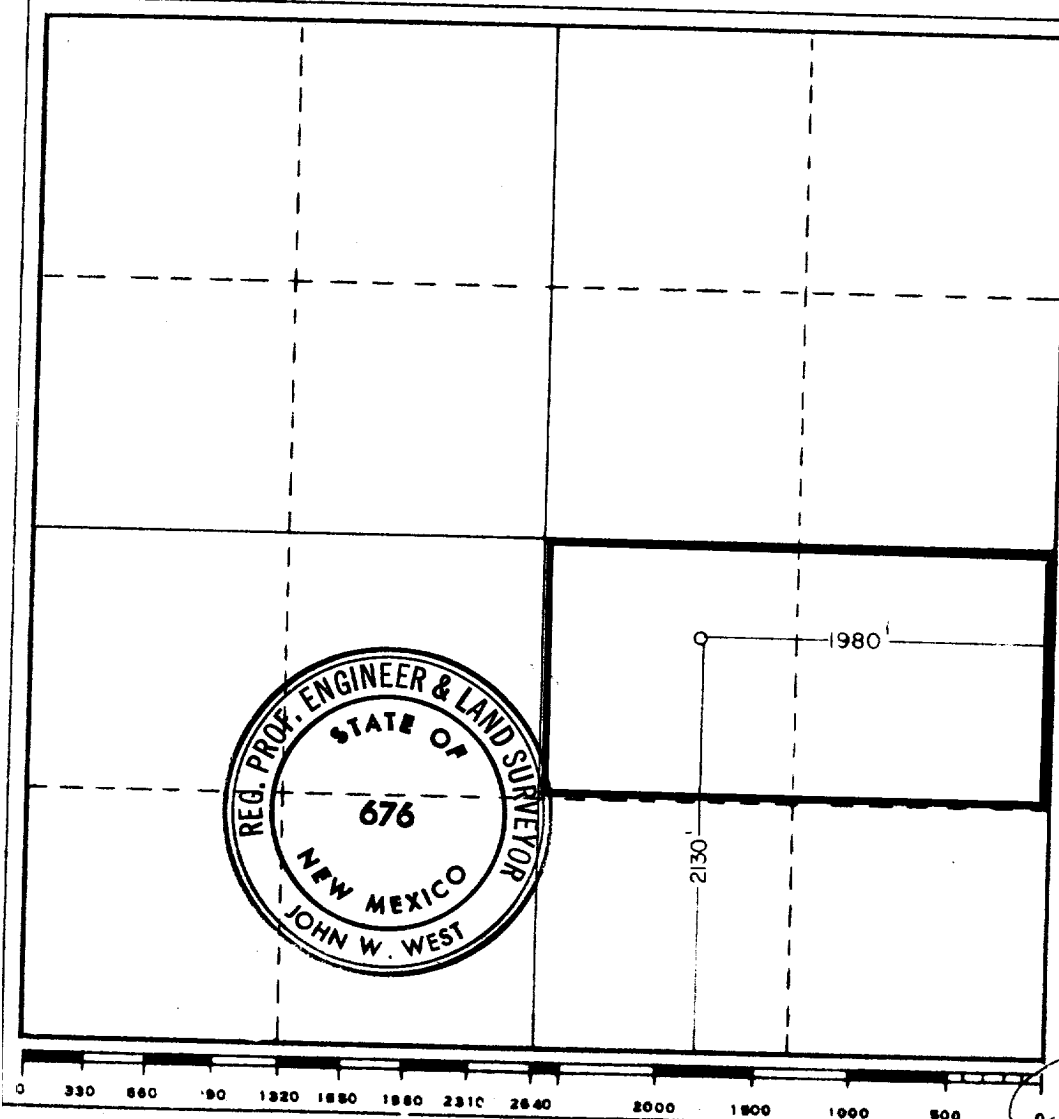
I hereby certify that the well location shown on this plat was plotted from field notes of actual surveys made by me or under my supervision, and that the same is true and correct to the best of my knowledge and belief.

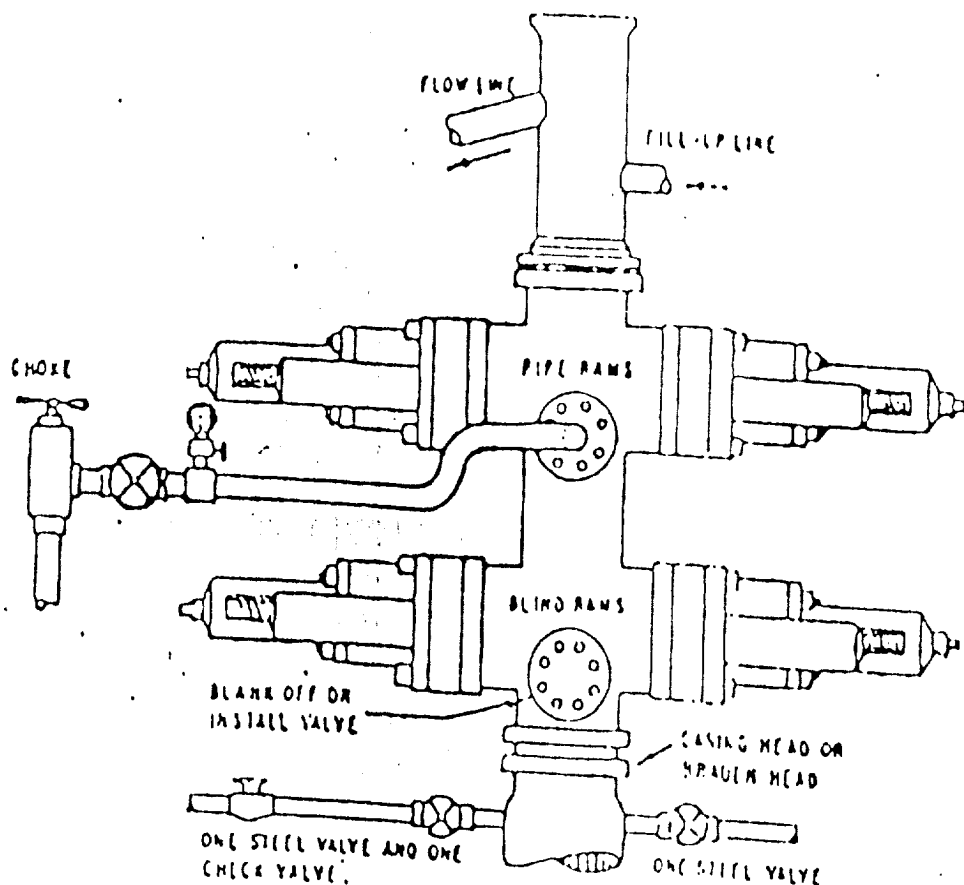
Date Surveyed
12-24-80

Registered Professional Engineer and/or Land Surveyor

John W. West

Certificate No. **JOHN W. WEST 676**
PATRICK A. ROMERO 6683
Ronald J. Elders 3239





THE FOLLOWING CONSTITUTE MINIMUM BLOWOUT PREVENTER REQUIREMENTS

- A. ONE DOUBLE GATE BLOWOUT PREVENTER WITH LOWER RAMS BLIND AND UPPER RAMS FOR PIPE, ALL HYDRAULICALLY CONTROLLED, OPENING OR PREVENTERS BETWEEN RAMS.
- B. OPENING TO BE FLANGED, STUDDED OR CLAMPED AND AT LEAST TWO INCHES DIAMETER.
- C. ALL CONNECTIONS FROM OPERATING MANIFOLD TO PREVENTERS TO BE ALL STEEL HOSE OR TUBE A MINIMUM OF ONE INCH IN DIAMETER.
- D. THE AVAILABLE CLOSING PRESSURE SHALL BE AT LEAST 15% IN EXCESS OF THAT REQUIRED WITH SUFFICIENT VOLUME TO OPERATE THE PREVENTERS.
- E. ALL CONNECTIONS TO AND FROM PREVENTERS TO HAVE A PRESSURE RATING EQUIVALENT TO THAT OF THE B.O.P.
- F. MANUAL CONTROLS TO BE INSTALLED BEFORE DRILLING CEMENT PLUG.
- G. VALVE TO CONTROL FLOW THROUGH DRILL PIPE TO BE LOCATED ON RIG FLOOR.
- H. CHOKE MAY BE EITHER POSITIVE OR ADJUSTABLE. choke spool may be used between rams.

REPCO II
 ONE HYDRAULIC DUAL BLOWOUT PREVENTER
 1000# WP
 1000# TEST Pressure