

COUNTY LEA Keanitz, S.
 OPR TENNECO OIL CO. NM
 o 2 LEASE State "LF-30" API 30-025-27458
 Sec 30, T16S, R34E
 2310 FSL, 1480 FWL of Sec
 10 mi NE/Maljamar SPD 6-22-81 12-1-28 NM
 10-12-81

WELL CLASS: INIT D FIN DG LSE CODE			
FORMATION	DATUM	FORMATION	DATUM
ID 13,350 (MSSP)		PBD 13,304	

IP (Morrow) Perfs 13,250-266 CAOF 12,110 MCFGPD. GOR 9632;
 gty (Gas) .6751, (Cond) 50.6; SIWHP 4595; SIBHP 6981

CONTR TOT #3 OPRVLEV 4143 GL, 4165 KB sub-s

F.R. 6-22-81
 PD 13,300 RT (Morrow)
 6-25-81 TD 391; DOC
 6-30-81 Drlg 2910
 7-7-81 Drlg 4518
 Mud wt 10, vis 30
 7-14-81 Drlg 6307
 7-21-81 Drlg 8046
 7-30-81 Drlg 10,047
 Mud wt 9.2, vis 28
 8-3-81 Drlg 10,695
 8-11-81 Drlg 11,481
 Mud wt 9.6, vis 39
 8-17-81 Drlg 12,008
 Mud wt 9.6 vis 35
 8-25-81 Drlg 12,512
 Mud wt 9.8, vis 35

12-1-28

LEA
TENNECO OIL CO.

Kemnitz, S.
1 State "LF-30"

NM
Page 2

9-1-81

Drlg 12,740
Mud wt 9.5, vis 34

9-9-81

Drlg 13,350
Mud wt 10.7, vis 40

9-15-81

TD 13.350; WOCU

11-30-81

TD 13,350; PBD 13.304; Complete

Perf (Morrow) 13,250-266

Treatment(NA)

(Morrow) FOUR POINT GAUGES:

Flwd 1088 MCFGPD, 6/64 chk, 60 mins, TP 4541

Flwd 1705 MCFGPD, 8/64 chk, 60 mins, TP 4500

Flwd 2524 MCFGPD, 12/64 chk, 60 mins, TP 4414

Flwd 3121 MCFGPD, 16.5/64 chk, 60 mins, TP 4320

LOG TOPS: San Andres 4510, Glorieta 5970,

Paddock 6590, Tubb 7200, Abo 7965, Wolfcamp

12-1-28 NM

11-30-81

LOG TOPS: Cont'd

9670, Strawn 12,118, Atoka 12,387, Morrow

13,272, Mississippian 1,854

12-1-28 NM

IC 30-025-70314-81

**MEXICO OIL CONSERVATION COMMISSION
WELL LOCATION AND ACREAGE DEDICATION PLAT**

Form 10
5-1978
Effective 1-1-85

All distances must be from the outer boundaries of the Section

TENNECO Oil Co.			Lease		State LF 30		Well No. 2	
Section 30		Township 16 South		Range 34 East		County Lea		
Location of Well: 2310 feet from the south line and 1480 feet from the west line								
Producing Formation Morrow		Pool Undesignated South Kemnitz Atoka Morrow				Dedicated Acreage: 290.6		

Outline the acreage dedicated to the subject well by colored pencil or hatchure marks on the plat below.

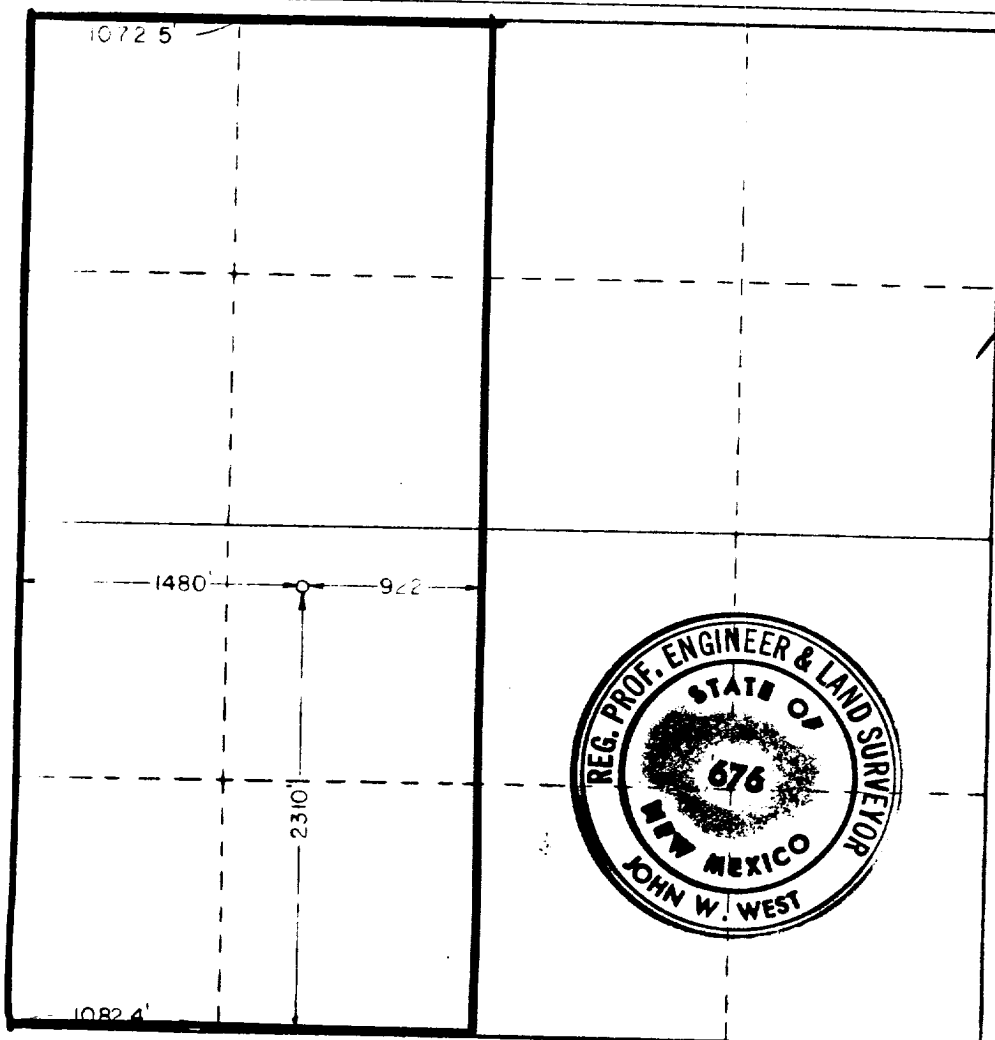
If more than one lease is dedicated to the well, outline each and identify the ownership thereof (both as to working interest and royalty).

If more than one lease of different ownership is dedicated to the well, have the interests of all owners been consolidated by communitization, unitization, force-pooling, etc?

Yes ☐ No ☐ If answer is "yes," type of consolidation _____

If answer is "no," list the owners and tract descriptions which have actually been consolidated. (Use reverse side of this form if necessary.) _____

No allowable will be assigned to the well until all interests have been consolidated (by communitization, unitization, force-pooling, or otherwise) or until a non-standard unit, eliminating such interests, has been approved by the Commission.



CERTIFICATION

I hereby certify that the information contained herein is true and complete to the best of my knowledge and belief.

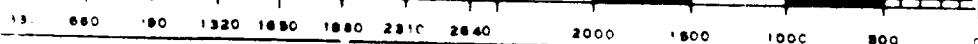
Name
Division Drilling Engineer
Position
Tenneco Oil Company
Company
June 12, 1981
Date

I hereby certify that the well location shown on this plat was plotted from field notes of actual surveys made by me or under my supervision, and that the same is true and correct to the best of my knowledge and belief.

Date Surveyed
June 9, 1981

Registered Professional Engineer and/or Land Surveyor

Certificate No. **JOHN W. WEST 676**
PATRICK A. ROMERO 6663
Ronald J. Eidson 3239



173

RECEIVED
JUN 2 1964
U.S. DEPARTMENT OF AGRICULTURE