

NE EXICO OIL CONSERVATION COMMISSION
WELL LOCATION AND ACREAGE DEDICATION PLAT

Form C-112
Supersedes C-128
Effective 1-1-65

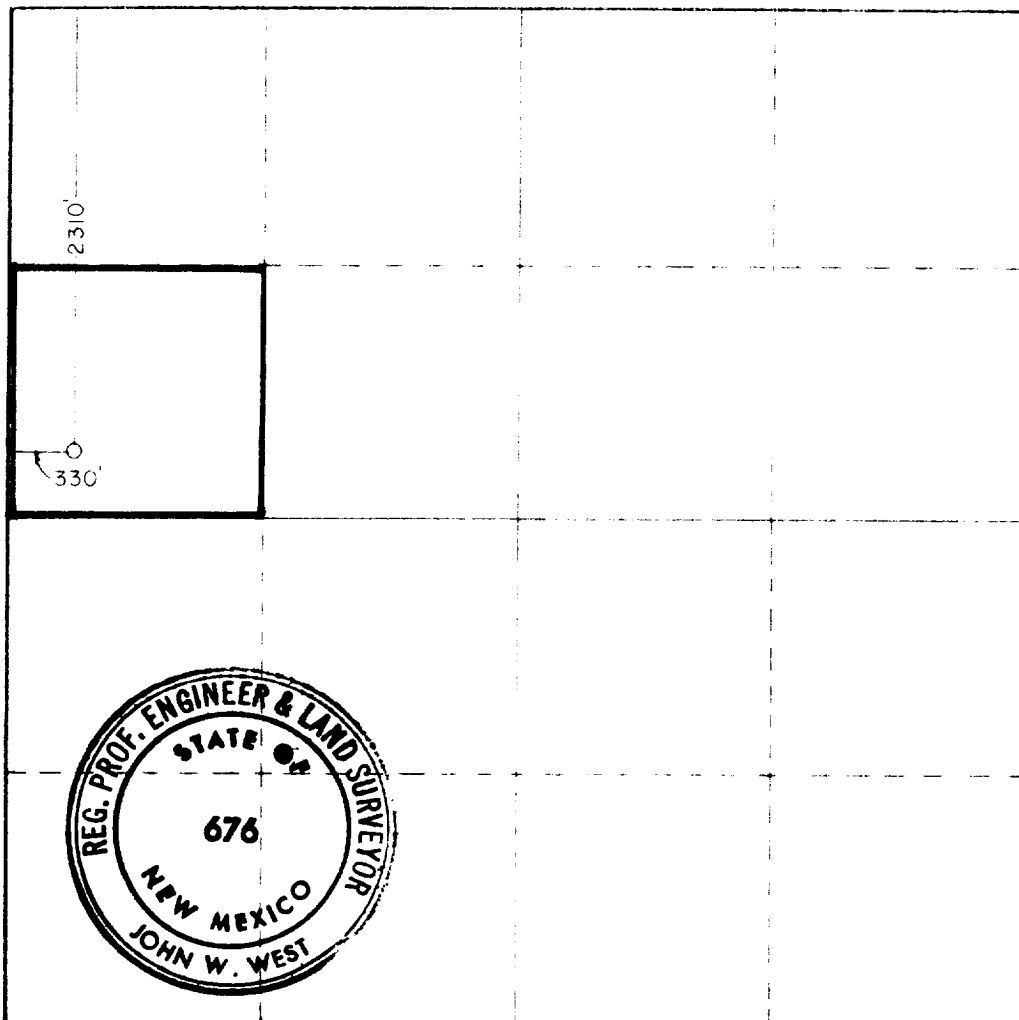
All distances must be from the outer boundaries of the Section

Operator Mosbacher Production Co.			Lessee Clayton Anderson			Well No. 1		
Tract Letter E	Section 26	Township 15 South	Range 37 East	County Lea				
Actual Surface Location of Well: 2310 feet from the North line and 330 feet from the West line								
Ground Level Elev. 3777.5'		Producing Formation Dev.		Pool Denton Dev.			Dedicated Acreage 40 Acres	

1. Outline the acreage dedicated to the subject well by colored pencil or hatchure marks on the plat below.
2. If more than one lease is dedicated to the well, outline each and identify the ownership thereof (both as to working interest and royalty)
3. If more than one lease of different ownership is dedicated to the well, have the interests of all owners been consolidated by communitization, unitization, force pooling, etc?
☐ Yes ☐ No If answer is "yes," type of consolidation _____

If answer is "no," list the owners and tract descriptions which have actually been consolidated (Use reverse side of this form if necessary): _____

No allowable will be assigned to the well until all interests have been consolidated (by communitization, unitization, forced-pooling, or otherwise) or until a non-standard unit, eliminating such interests, has been approved by the Commission.



CERTIFICATION

I hereby certify that the information contained herein is true and complete to the best of my knowledge and belief.

Beverly A. Dausin
Beverly A. Dausin

Position

Engineering Asst.

Company

Mosbacher Production Co.

Date

12/7/81

I hereby certify that the well location shown on this plat was plotted from field notes of actual surveys made by me or under my supervision, and that the same is true and correct to the best of my knowledge and belief.

Date Surveyed

Nov. 7, 1981

Registered Professional Engineer and Land Surveyor

John W. West
John W. West

Certificate No. **JOHN W. WEST 676**
PATRICK A. ROMERO 6863
Ronald J. Eidson 3239

0 330 660 990 1320 1650 1980 2310 2640 2970 3300 3630 3960 4290 4620 4950 5280 5610 5940 6270 6600

RECEIVED
DEC 10 1981
-8/58/9-D
INFORMATION DIV.