

NEW MEXICO OIL CONSERVATION COMMISSION  
WELL LOCATION AND ACREAGE DEDICATION PLAT

Form No. 1  
Revised 1-1-69  
Effective 1-1-69

All distances must be from the outer boundaries of the Section.

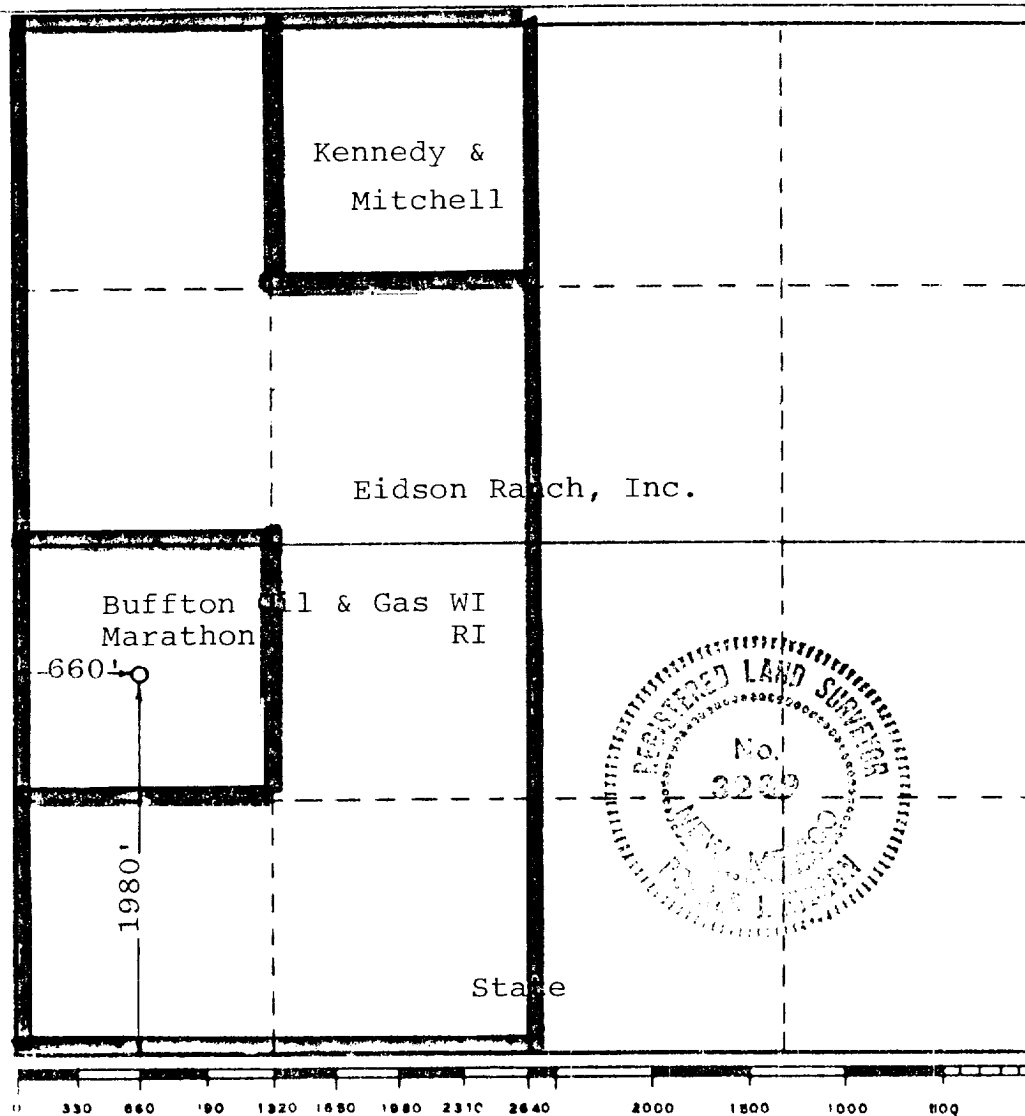
Operator Buffton Oil & Gas, Inc.		Lease Eidson		Well No. 1
Tract Letter L	Section 35	Township 16 South	Range 35 East	County Lea
Actual Footage Location of Well:				
1980 feet from the South line and		660 feet from the West line		
Ground Level Elev. 3962'	Producing Formation Mississippian	Pool <i>Shae Bar</i> Townsend (Miss)	Dedicated Acreage 320	

1. Outline the acreage dedicated to the subject well by colored pencil or hatchure marks on the plat below.
2. If more than one lease is dedicated to the well, outline each and identify the ownership thereof (both as to working interest and royalty).
3. If more than one lease of different ownership is dedicated to the well, have the interests of all owners been consolidated by communitization, unitization, force-pooling, etc?

☒ Yes ☐ No If answer is "yes," type of consolidation Forced-Pooling

If answer is "no," list the owners and tract descriptions which have actually been consolidated. (Use reverse side of this form if necessary.) \_\_\_\_\_

No allowable will be assigned to the well until all interests have been consolidated (by communitization, unitization, forced-pooling, or otherwise) or until a non-standard unit, eliminating such interests, has been approved by the Commission.



CERTIFICATION

I hereby certify that the information contained herein is true and complete to the best of my knowledge and belief

*Phyllis R. Sharrick*  
Name Phyllis R. Sharrick

Position  
Agent

Company  
Buffton Oil & Gas, Inc.

Date  
9-22-82

I hereby certify that the well location shown on this plat was plotted from field notes of actual surveys made by me or under my supervision, and that the same is true and correct to the best of my knowledge and belief.

Date Surveyed  
February 12, 1982

Registered Professional Engineer and/or Land Surveyor

*Ronald J. Eidson*

Certificate No. JOHN W. WEST 676  
PATRICK A. ROMERO 6603  
Ronald J. Eidson 3232

# NEW MEXICO OIL CONSERVATION COMMISSION WF LOCATION AND ACREAGE DEDICATION PLAT

Form O-11-2  
Revised 6-1-78  
Effective 1-1-85

All distances must be from the outer boundaries of the Section.

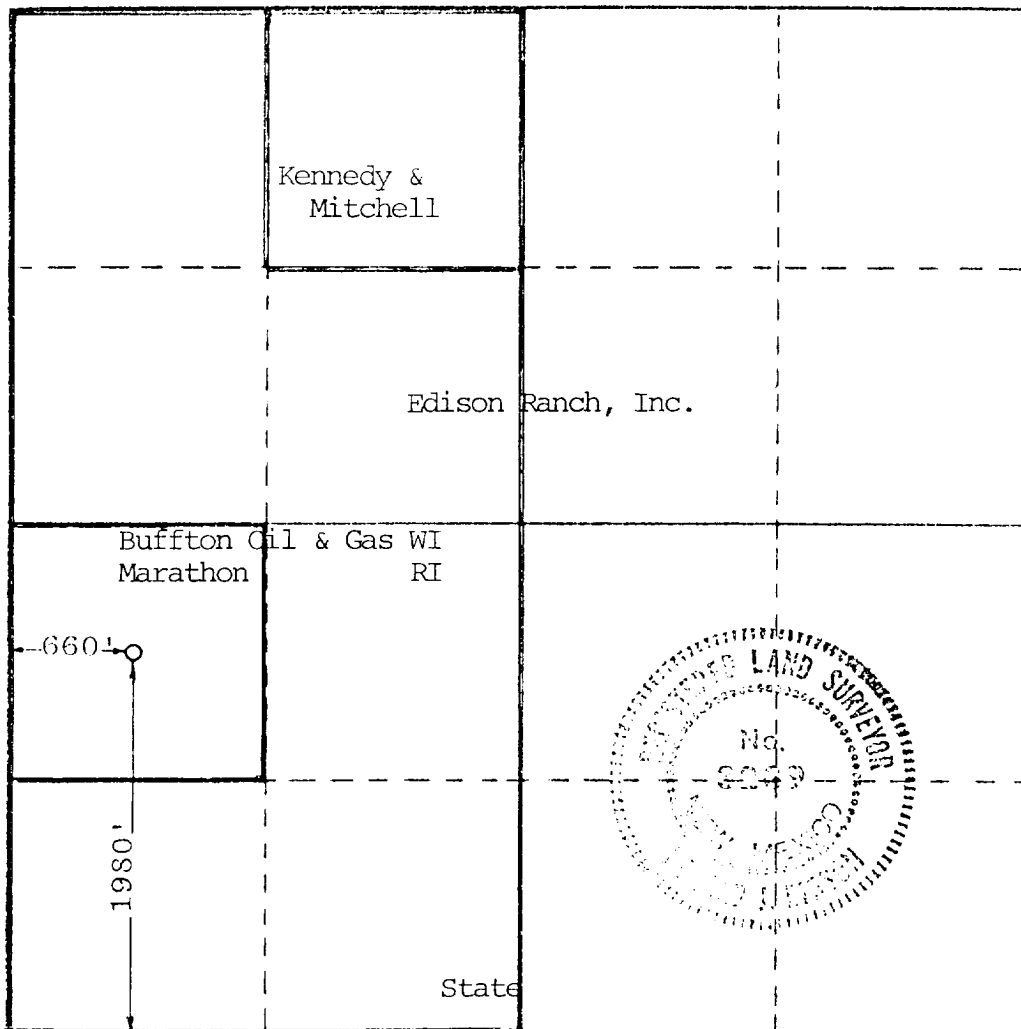
Operator <b>Buffton Oil &amp; Gas, Inc.</b>			Lessee <b>Edison</b>		Well No. <b>1</b>
Unit Letter <b>L</b>	Section <b>35</b>	Township <b>16 South</b>	Range <b>35 East</b>	County <b>Lea</b>	
Actual Footage Location of Well:					
<b>1980</b> feet from the <b>South</b> line and		<b>660</b> feet from the <b>West</b> line			
Ground Level Elev. <b>3962'</b>	Producing Formation <b>Atoka-Morrow</b>		Pool <b>South Shoebar (<del>Atoka</del>-Morrow)</b>		Dedicated Acreage <b>320</b>

1. Outline the acreage dedicated to the subject well by colored pencil or hachure marks on the plat below.
2. If more than one lease is dedicated to the well, outline each and identify the ownership thereof (both as to working interest and royalty).
3. If more than one lease of different ownership is dedicated to the well, have the interests of all owners been consolidated by communitization, unitization, force-pooling, etc?

☒ Yes    ☐ No    If answer is "yes," type of consolidation Forced-Pooling

If answer is "no," list the owners and tract descriptions which have actually been consolidated. (Use reverse side of this form if necessary.) \_\_\_\_\_

No allowable will be assigned to the well until all interests have been consolidated (by communitization, unitization, forced-pooling, or otherwise) or until a non-standard unit, eliminating such interests, has been approved by the Commission.



## CERTIFICATION

I hereby certify that the information contained herein is true and complete to the best of my knowledge and belief.

Name \_\_\_\_\_

Position **Jerry Moritz**  
Agent

Company  
**Buffton Oil & Gas, Inc.**

Date  
**2-11-82**

I hereby certify that the well location shown on this plat was plotted from field notes of actual surveys made by me or under my supervision, and that the same is true and correct to the best of my knowledge and belief.

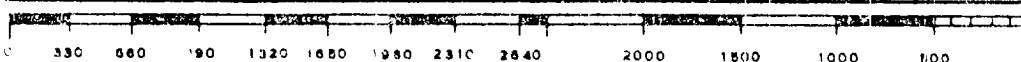
Date Surveyed

**February 12, 1982**

Registered Professional Engineer and/or Land Surveyor

*Ronald J. Edison*

Certificate No. **JOHN W. WEST 673**  
**PATRICK A. ROMERO 6886**  
**Ronald J. Edison 3239**



1961  
FEB 16  
11