

NEW MEXICO OIL CONSERVATION COMMISSION
WELL LOCATION AND ACREAGE DEDICATION PLAT

Form C-102
Supersedes C-128
Effective 1-1-65

All distances must be from the outer boundaries of the Section.

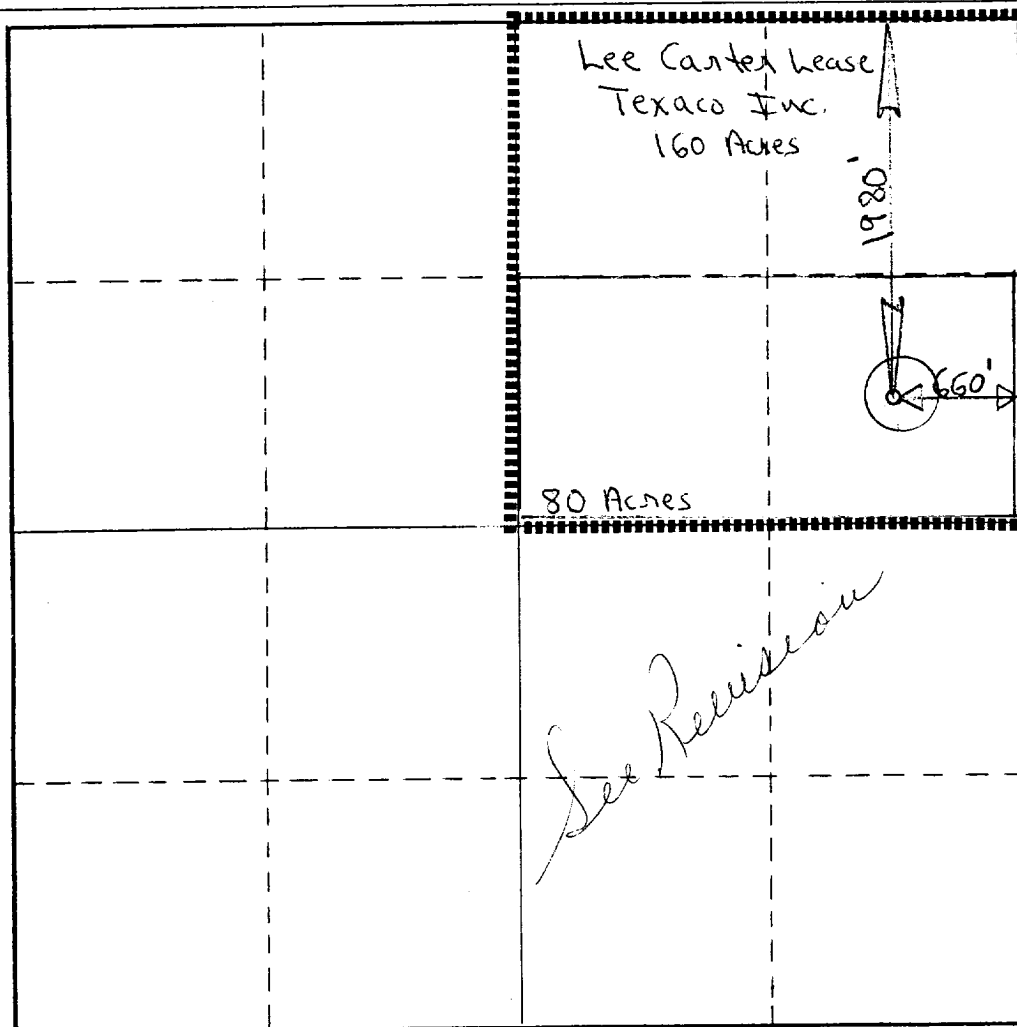
Operator Texaco Inc.		Lease Lee Carter		Well No. 1
Unit Letter H	Section 33	Township T-16-S	Range R-37-E	County Lea
Actual Footage Location of Well: 1980 feet from the North line and 660 feet from the East line				
Ground Level Elev. 3778	Producing Formation Strawn	Pool Casey Strawn	Dedicated Acreage: 80 Acres	

1. Outline the acreage dedicated to the subject well by colored pencil or hachure marks on the plat below.
2. If more than one lease is dedicated to the well, outline each and identify the ownership thereof (both as to working interest and royalty).
3. If more than one lease of different ownership is dedicated to the well, have the interests of all owners been consolidated by communitization, unitization, force-pooling, etc?

☐ Yes ☒ No If answer is "yes," type of consolidation See Reverse Side

If answer is "no," list the owners and tract descriptions which have actually been consolidated. (Use reverse side of this form if necessary.) _____

No allowable will be assigned to the well until all interests have been consolidated (by communitization, unitization, forced-pooling, or otherwise) or until a non-standard unit, eliminating such interests, has been approved by the Commission.



CERTIFICATION

I hereby certify that the information contained herein is true and complete to the best of my knowledge and belief.

B. L. Eiland

Name
B. L. Eiland

Position
Division Surveyor

Company
Texaco Inc.

Date
August 27, 1982

I hereby certify that the well location shown on this plat was plotted from field notes of actual surveys made by me or under my supervision, and that the same is true and correct to the best of my knowledge and belief.

August 27, 1982

Date Surveyed

Registered Professional Engineer and/or Land Surveyor

B. L. Eiland
B. L. Eiland

Certificate No.
4386

0 330 660 990 1320 1650 1980 2310 2640 2000 1500 1000 500 0

As of 8-26-82 the following parties have consolidated their leasehold or undivided mineral interest in the Northeast quarter of Sec. 33:

Texaco Inc.

Producing Royalties

W. T. Reed

Petroleum Corporation of Texas

Heritage Resources

Sohio Petroleum

Sun Petroleum

Mary Ruth McCorey

RECEIVED

SEP 7 1982

**O.C.D.
TO BE OFFICE**