

**NEW MEXICO OIL CONSERVATION COMMISSION
WELL LOCATION AND ACREAGE DEDICATION PLAT**

*Form 2-77
Supersedes Form 2-76*

All distances must be from the outer boundaries of the Section

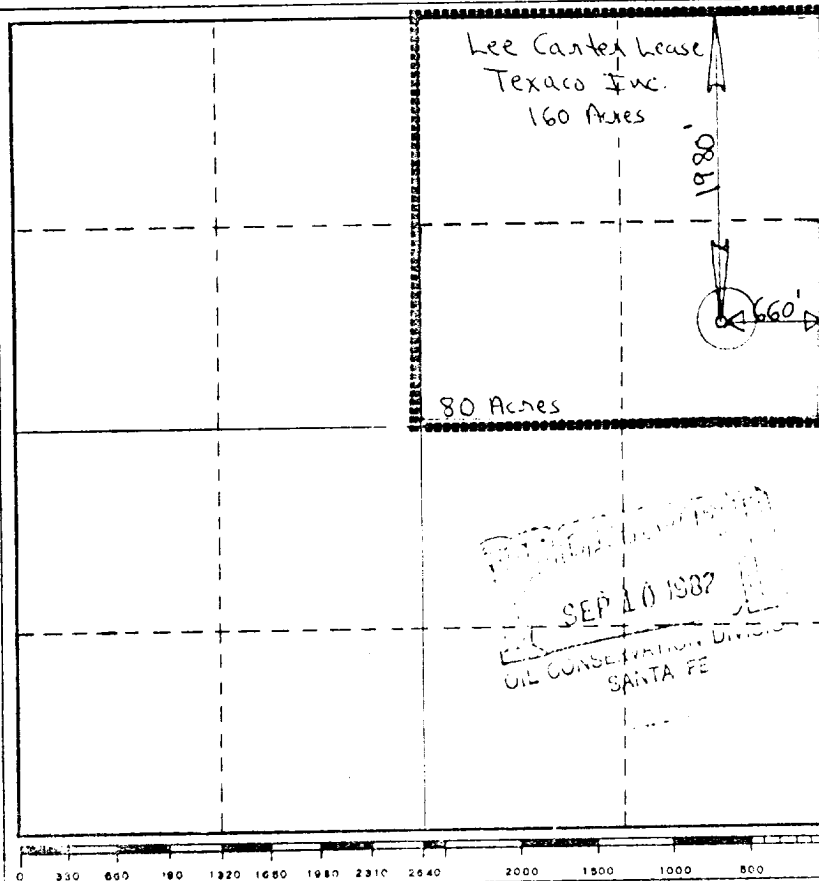
Operator Texaco Inc.		Lease Lee Carter		Well No. 1
Unit Letter H	Section 33	Township T-16-S	Range R-37-E	County Lea
Actual Footage Location of well:				
1980	feet from the North	Line and 660	feet from the East	Line
Ground Level Elev. 3778	Producing Formation Strawn	Depth Casey Strawn	Dedicated Acreage 80	Acres

1. Outline the acreage dedicated to the subject well by colored pencil or hatchure marks on the plat below.
2. If more than one lease is dedicated to the well, outline each and identify the ownership thereof (both as to working interest and royalty).
3. If more than one lease of different ownership is dedicated to the well, have the interests of all owners been consolidated by communitization, unitization, force-pooling, etc?

☐ Yes ☒ No If answer is "yes," type of consolidation See Reverse Side

If answer is "no," list the owners and tract descriptions which have actually been consolidated. (Use reverse side of this form if necessary.)

No allowable will be assigned to the well until all interests have been consolidated (by communitization, unitization, forced-pooling, or otherwise) or until a non-standard unit, eliminating such interests, has been approved by the Commission.



CERTIFICATION

I hereby certify that the information contained herein is true and complete to the best of my knowledge and belief.

B. L. Eiland

Name
B. L. Eiland

Position
Division Surveyor

Company
Texaco Inc.

Date
August 27, 1982

I hereby certify that the well location shown on this plat was plotted from field notes of actual surveys made by me or under my supervision, and that the same is true and correct to the best of my knowledge and belief.

August 27, 1982

Date Surveyed

Registered Professional Engineer
and Licensed Surveyor

B. L. Eiland
B. L. Eiland

Certification No.
4386

SEP 10 1982
OIL CONSERVATION DIVISION
SANTA FE