

30-025-27979

NO. OF COPIES RECEIVED	
DISTRIBUTION	
SANTA FE	
FILE	
U.S.G.S.	
LAND OFFICE	
OPERATOR	

NEW MEXICO OIL CONSERVATION COMMISSION

Form C-101
Revised 1-1-65

5A. Indicate Type of Lease	
STATE <input checked="" type="checkbox"/>	FEE <input type="checkbox"/>
5. State Oil & Gas Lease No.	
5-15973	

APPLICATION FOR PERMIT TO DRILL, DEEPEN, OR PLUG BACK

1a. Type of Work		7. Unit Agreement Name	
b. Type of Well DRILL <input checked="" type="checkbox"/> DEEPEN <input type="checkbox"/> PLUG BACK <input type="checkbox"/> OIL WELL <input checked="" type="checkbox"/> GAS WELL <input type="checkbox"/> OTHER <input type="checkbox"/> SINGLE ZONE <input checked="" type="checkbox"/> MULTIPLE ZONE <input type="checkbox"/>		8. Farm or Lease Name	
2. Name of Operator		Lea "ZO" State	
Gulf Oil Corporation		9. Well No.	
3. Address of Operator		1	
P. O. Box 670, Hobbs, NM 88240		10. Field and Pool, or Wildcat	
4. Location of Well UNIT LETTER <u>N</u> LOCATED <u>660</u> FEET FROM THE <u>South</u> LINE AND <u>1980</u> FEET FROM THE <u>West</u> LINE OF SEC. <u>35</u> TWP. <u>16S</u> RGE. <u>32E</u> NMPM		Maljamar	
		12. County	
		Lea	
		19. Proposed Depth	
		4550'	
		19A. Formation	
		Grayburg-San Andres Rotary	
		20. Rotary or C.T.	
21. Elevations (Show whether DF, RT, etc.)		21A. Kind & Status Plug. Bond	
4272.2' GL		Blanket	
		21B. Drilling Contractor	
		Cactus	
		22. Approx. Date Work will start	
		11-1-82	

23.

PROPOSED CASING AND CEMENT PROGRAM

SIZE OF HOLE	SIZE OF CASING	WEIGHT PER FOOT	SETTING DEPTH	SACKS OF CEMENT	EST. TOP
12 1/2"	8-5/8"	24#	350'	250	circ
7-7/8"	5 1/2"	14#	4550'	750	circ

Drilling Mud: 0' - 400' Fresh water spud mud, 9.0 ppg, 35-40 vis, 9-10 ph
400' - 4550' Brine water, 10.0-10.2 ppg, 29-30 vis, 9 ph, 20 wl

See Attached BOP Drawing #2

APPROVAL VALID FOR 180 DAYS
PERMIT EXPIRES 4/20/83
UNLESS DRILLING UNDERWAY

IN ABOVE SPACE DESCRIBE PROPOSED PROGRAM: IF PROPOSAL IS TO DEEPEN OR PLUG BACK, GIVE DATA ON PRESENT PRODUCTIVE ZONE AND PROPOSED NEW PRODUCTIVE ZONE. GIVE BLOWOUT PREVENTER PROGRAM, IF ANY.

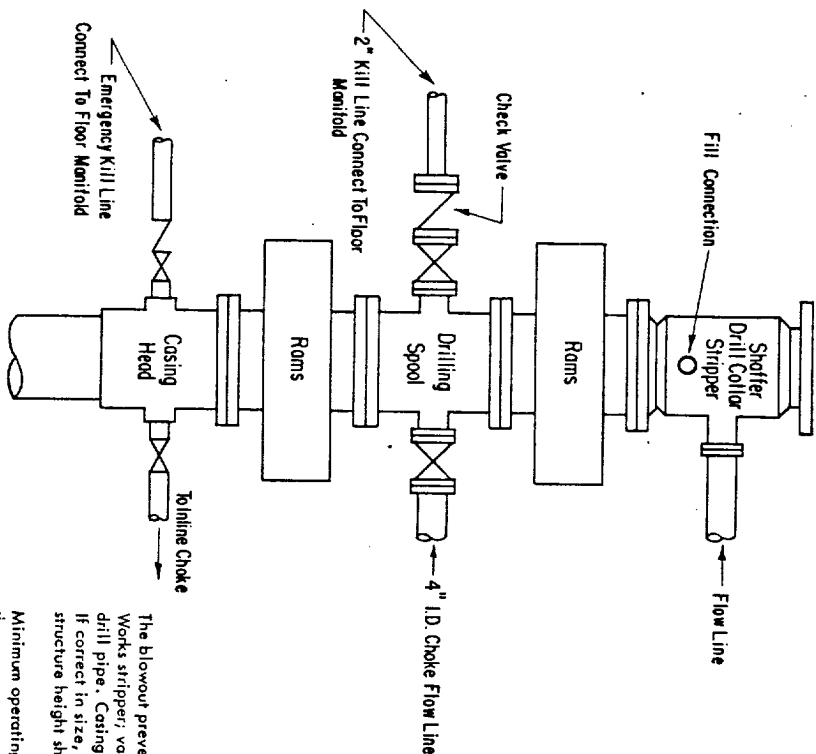
I hereby certify that the information above is true and complete to the best of my knowledge and belief.

Signed L.C. Under Title Area Production Manager Date 10-14-82

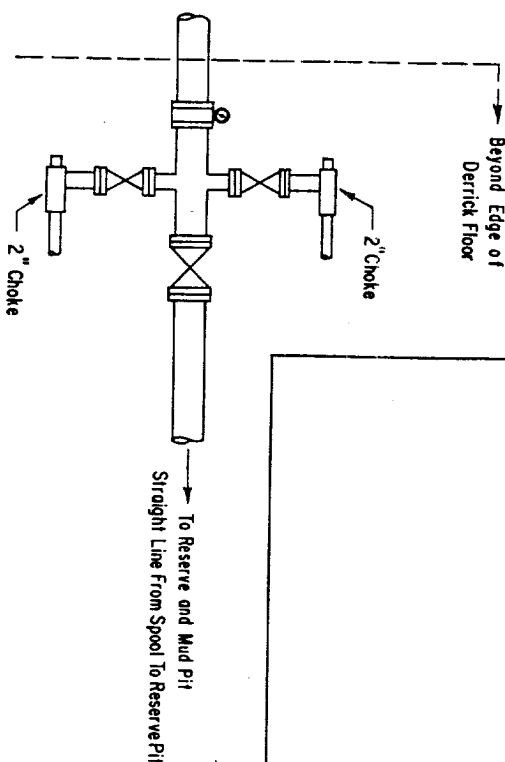
(This space for State Use)

APPROVED BY Eddie W. [Signature] TITLE OIL & GAS INSPECTOR DATE OCT 22 1982

CONDITIONS OF APPROVAL, IF ANY:



3000 PSI WORKING PRESSURE BLOWOUT PREVENTER HOOK-UP



ADDITIONS - DELETIONS - CHANGES
SPECIFY

The blowout preventer assembly shall consist of one blind ram preventer and one pipe ram preventer, both hydraulically operated; a Shafter Tool works stripper; valves; chokes and connections, as illustrated. If a tapered drill string is used, a ram preventer must be provided for each size of drill pipe. Casing and tubing rams to fit the preventers are to be available as needed. The ram preventers may be two singles or a double type. If correct in size, the flanged outlets of the ram preventer may be used for connecting to the 4-inch I.D. choke flow line and kill line. The sub-structure height shall be sufficient to install a rotating blowout preventer.

Minimum operating equipment for the preventers shall be as follows: (1) Pump (s), driven by a continuous source of power, capable of closing all the pressure-operated devices simultaneously within _____ seconds. The pump (s) is to be connected to a closed type hydraulic operating system. (2) When requested, accumulators with a precharge of nitrogen of not less than 750 PSI and connected so as to receive a fluid charge from the above pump (s). With the charging pump (s) shut down, the pressurized fluid volume stored in the accumulators must be sufficient to close all the pressure-operated devices simultaneously within _____ seconds; after closure, the remaining accumulator pressure shall be not less than 1000 PSI with the remaining accumulator fluid volume at least _____ percent of the original. (3) When requested, an additional source of power, remote and equivalent, is to be available to operate the above pump (s); or there shall be an additional pump (s) operated by separate power and equal in performance capabilities.

The closing manifold shall have a separate control for each pressure-operated device. Controls are to be labeled, with control handles indicating open and closed positions. A pressure reducer and regulator must be provided if a Hydril preventer is used. Gulf Legion No. 38 hydraulic oil, an equivalent or better, is to be used as the fluid to operate the hydraulic equipment.

The choke manifold, choke flow line, and choke lines are to be supported by metal stands and adequately anchored. The choke flow line and choke lines shall be constructed as straight as possible and without sharp bends. Easy and safe access is to be maintained to the choke manifold. All valves are to be selected for operation in the presence of oil, gas, and drilling fluids. The choke flow line valve connected to the drilling spool and all ram type preventers must be equipped with stem extensions, universal joints if needed, and hand wheels which are to extend beyond the edge of the derrick substructure. All other valves are to be equipped with handles.

NEW MEXICO OIL CONSERVATION COMMISSION
WELL LOCATION AND ACREAGE DEDICATION PLAT

Form C-102
Supersedes C-128
Effective 1-1-65

All distances must be from the outer boundaries of the Section

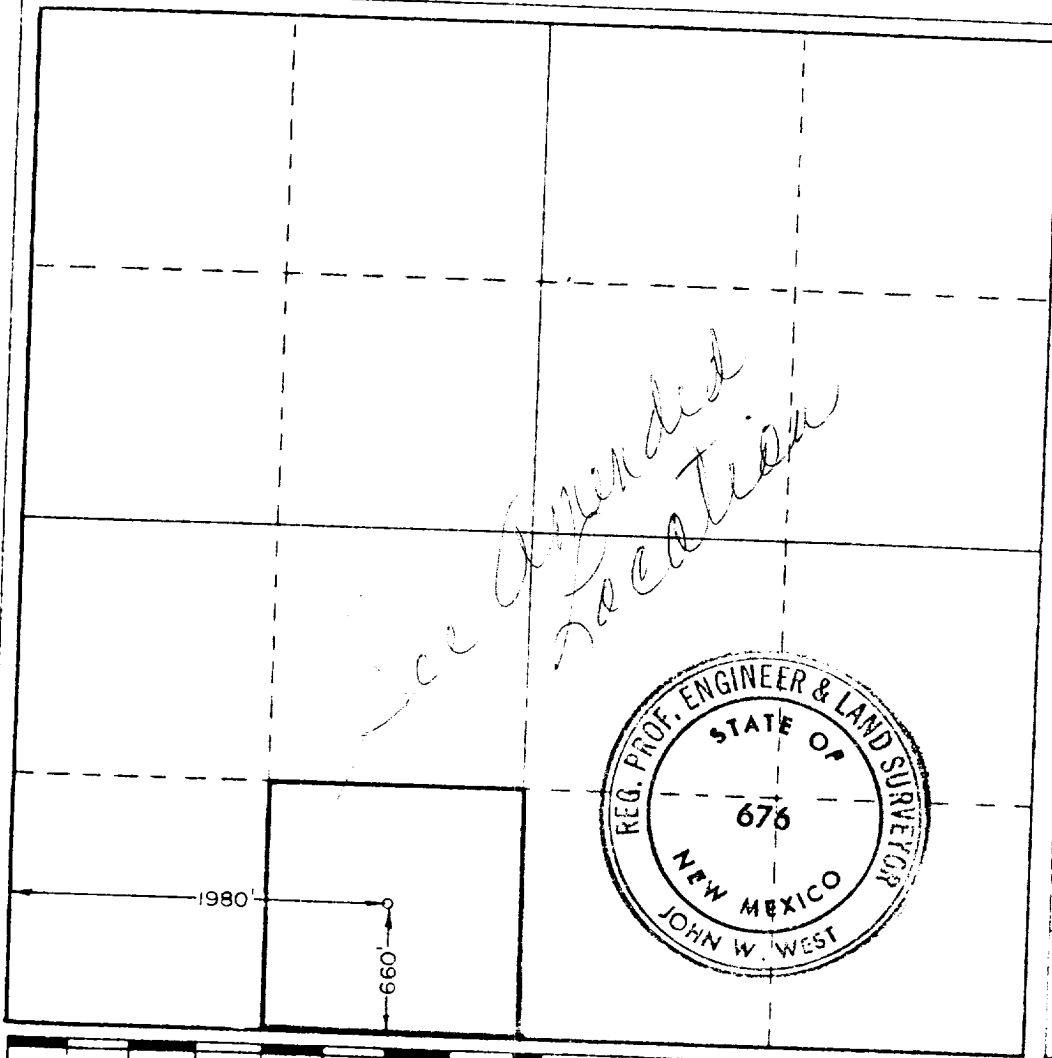
Operator GULF OIL CORPORATION			Lease LEA"20" STATE			Well No. 1
Unit Letter N	Section 35	Township 16 SOUTH	Range 32 EAST	County LEA		
Actual Footage Location of Well: 660 feet from the SOUTH line and 1980 feet from the WEST line						
Ground Level Elev. 4272.2	Producing Formation Grayburg-San Andres		Pool Maljamar	Dedicated Acreage: 40 Acres		

1. Outline the acreage dedicated to the subject well by colored pencil or hatchure marks on the plat below.
2. If more than one lease is dedicated to the well, outline each and identify the ownership thereof (both as to working interest and royalty).
3. If more than one lease of different ownership is dedicated to the well, have the interests of all owners been consolidated by communitization, unitization, force-pooling, etc?

☐ Yes ☐ No If answer is "yes," type of consolidation _____

If answer is "no," list the owners and tract descriptions which have actually been consolidated (Use reverse side of this form if necessary.) _____

No allowable will be assigned to the well until all interests have been consolidated (by communitization, unitization, forced-pooling, or otherwise) or until a non-standard unit, eliminating such interests, has been approved by the Commission.



CERTIFICATION

I hereby certify that the information contained herein is true and complete to the best of my knowledge and belief.

R. C. Anderson

Name
R. C. Anderson
Position
Area Production Manager
Company
Gulf Oil Corporation

Date
10-14-82

I hereby certify that the well location shown on this plat was plotted from field notes of actual surveys made by me or under my supervision, and that the same is true and correct to the best of my knowledge and belief.

Date Surveyed
10/12/82

Registered Professional Engineer and Land Surveyor

John W. West

Certificate No. **JOHN W. WEST 676**
PATRICK A. ROMERO 6668
Ronald J. Eidson 3239

0 330 660 990 1320 1650 1980 2310 2640 2970 3300 3630 3960 4290 4620 4950 5280 5610 5940 6270 6600