

**NEW MEXICO OIL CONSERVATION COMMISSION
WELL LOCATION AND ACREAGE DEDICATION PLAT**

Form C-102
Supersedes C-128
Effective 1-1-65

All distances must be from the outer boundaries of the Section

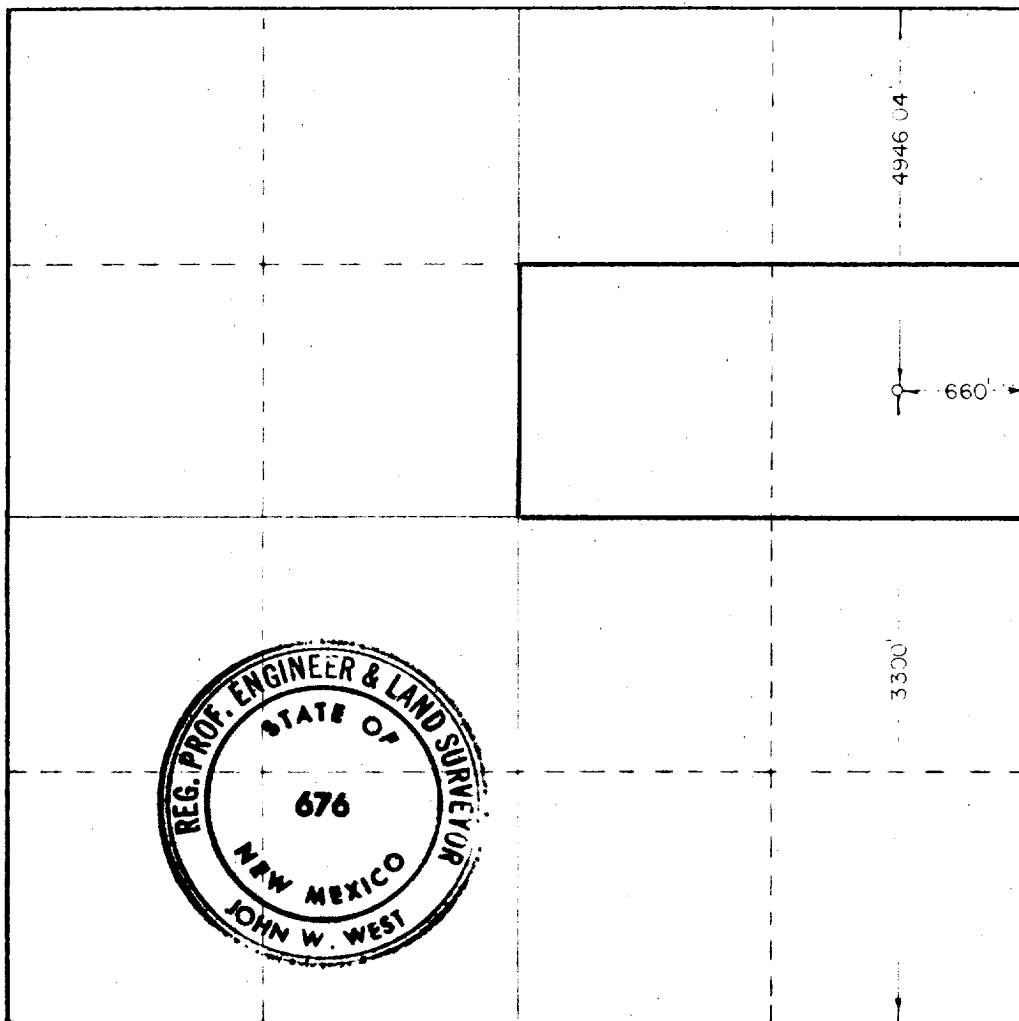
Operator Martindale Petroleum Corporation			Lease Webber		Well No. 1
Tract Letter P	Section 3	Township 16S	Range 32E	County Lea County	
Actual Footage Location of Well: <div style="display: flex; justify-content: space-between;"> 3300 feet from the South line and 660 feet from the East line </div>					
Ground Level Elev. 4311.0	Producing Formation Wolfcamp		Pool North Anderson Ranch		Dedicated Acreage: 80 Acres

1. Outline the acreage dedicated to the subject well by colored pencil or hachure marks on the plat below.
2. If more than one lease is dedicated to the well, outline each and identify the ownership thereof (both as to working interest and royalty)
3. If more than one lease of different ownership is dedicated to the well, have the interests of all owners been consolidated by communitization, unitization, force-pooling, etc?

☐ Yes ☐ No If answer is "yes," type of consolidation _____

If answer is "no" list the owners and tract descriptions which have actually been consolidated. (Use reverse side of this form if necessary.) _____

No allowable will be assigned to the well until all interests have been consolidated (by communitization, unitization, forced-pooling, or otherwise) or until a non-standard unit, eliminating such interests, has been approved by the Commission.



CERTIFICATION

I hereby certify that the information contained herein is true and complete to the best of my knowledge and belief.

Judy Landusky
Name
Judy Landusky

Position
Drilling & Production Clerk

Company
Martindale Petroleum Corp.

Date
November 16, 1982

I hereby certify that the well location shown on this plat was plotted from field notes of actual surveys made by me or under my supervision, and that the same is true and correct to the best of my knowledge and belief.

Date Surveyed

11/05/82

Registered Professional Engineer and/or Land Surveyor

John W. West

Certificate No

JOHN W. WEST NO. 676

