

NEW MEXICO OIL CONSERVATION COMMISSION
WELL LOCATION AND ACREAGE DEDICATION PLAT

Form C-102
Supersedes C-128
Effective 1-1-85

All distances must be from the outer boundaries of the Section

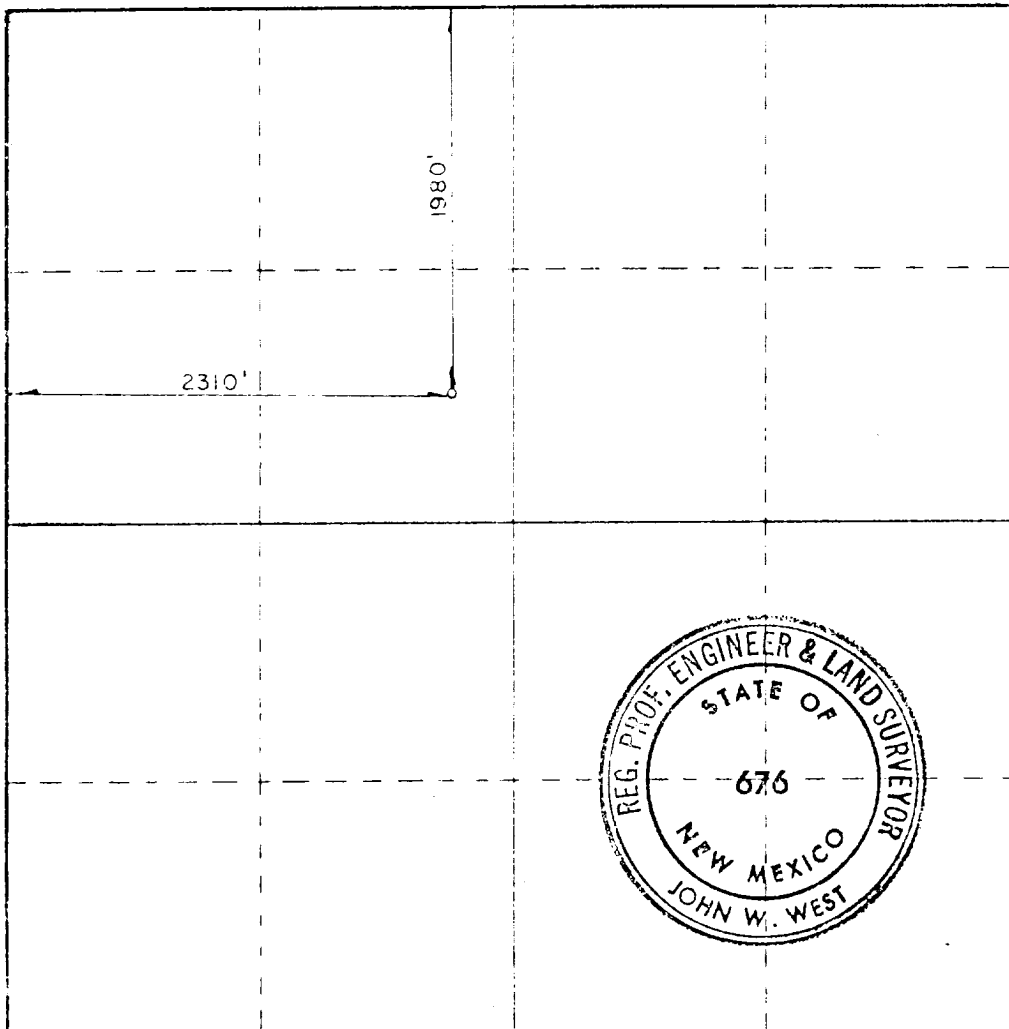
Lessor GULF OIL CORP.		Lessee LEA V.P. STATE		Well No. 1
Section F	Section 20	Township 15 SOUTH	Range 33 EAST	County LEA
Actual Portable Location of Well:				
1980	feet from the	NORTH	Line and	2310
				feet from the
				WEST
Ground Level Elev. 4219.6	Producing Formation Devonian		Pool Wildcat	Estimated Acreage: 320
				Acre

1. Outline the acreage dedicated to the subject well by colored pencil or hatchure marks on the plat below.
2. If more than one lease is dedicated to the well, outline each and identify the ownership thereof (both as to working interest and royalty).
3. If more than one lease of different ownership is dedicated to the well, have the interests of all owners been consolidated by communitization, unitization, force-pooling, etc?

☐ Yes ☐ No If answer is "yes," type of consolidation _____

If answer is "no," list the owners and tract descriptions which have actually been consolidated. (Use reverse side of this form if necessary.) _____

No allowable will be assigned to the well until all interests have been consolidated (by communitization, unitization, forced-pooling, or otherwise) or until a non-standard unit, eliminating such interests, has been approved by the Commission.



CERTIFICATION

I hereby certify that the information contained herein is true and complete to the best of my knowledge and belief.

R. C. Anderson
Name
For **R. C. Anderson**
Position
Area Production Manager
Company
Gulf Oil Corporation
Date
11-19-82

I hereby certify that the well location shown on this plat was plotted from field notes of actual surveys made by me or under my supervision, and that the same is true and correct to the best of my knowledge and belief.

Date Surveyed
November 15, 1982
Registered Professional Engineer and Land Surveyor
John W. West
Certificate No
John W. West, N.M. #676