

NEW MEXICO OIL CONSERVATION COMMISSION
WELL LOCATION AND ACREAGE DEDICATION PLAT

Form C-102
Supersedes C-128
Effective 1-1-65

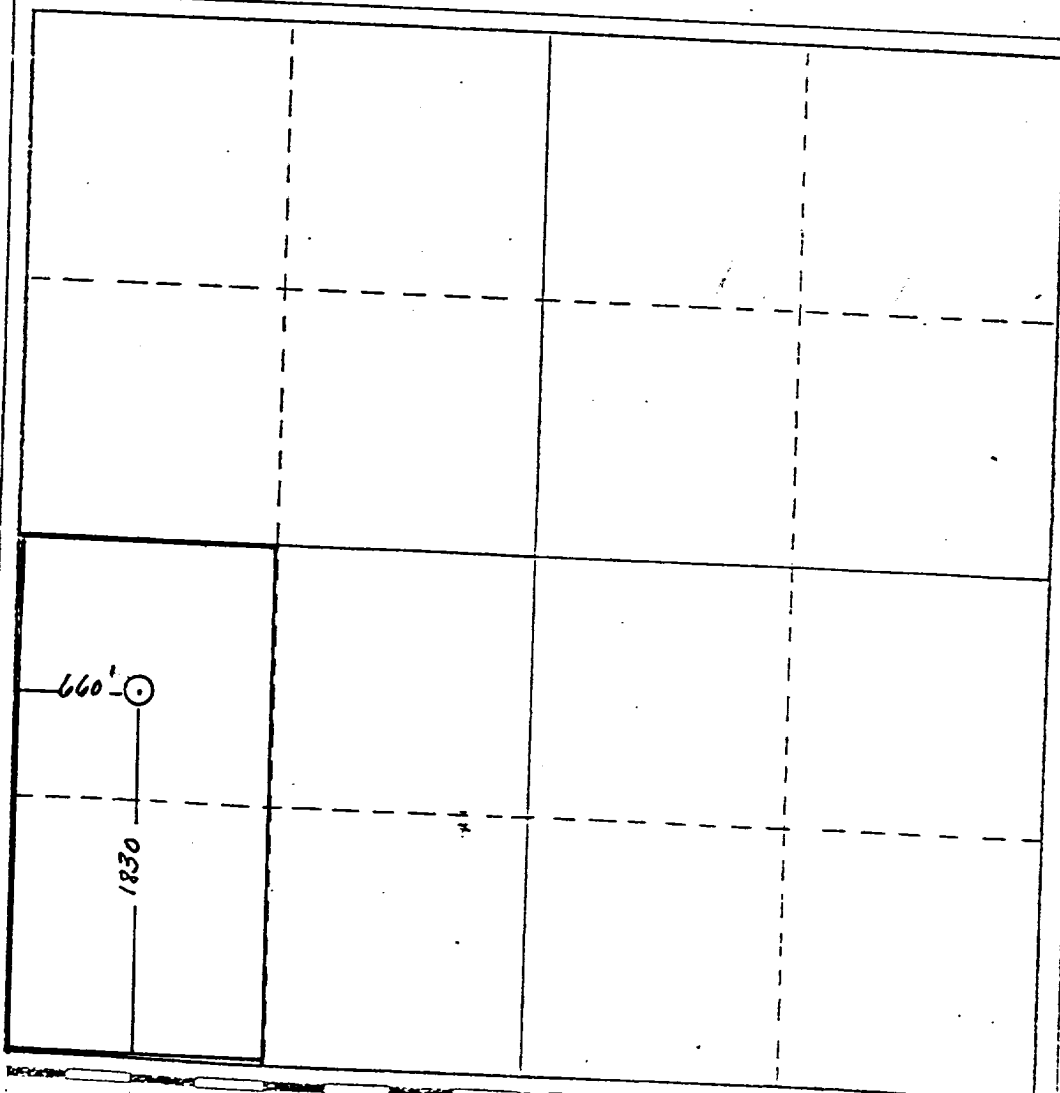
All distances must be from the outer boundaries of the Section.

Operator: <u>Union Texas Pet.</u>		Lease		Well No.	
A Division of <u>Enstar Corporation</u>		Scott		1	
Unit Letter	Section	Township	Range	County	
L	1	15S	36E	Lea	
Actual Footage Location of Well:					
1830		feet from the South		line and 660	
feet from the		West		line	
Ground Level Elev.	Producing Formation	Pool		Dedicated Acreage:	
3874.43	Wolfcamp	NE Caudill Wolfcamp		80 Acres	

1. Outline the acreage dedicated to the subject well by colored pencil or hachure marks on the plat below.
 2. If more than one lease is dedicated to the well, outline each and identify the ownership thereof (both as to working interest and royalty).
 3. If more than one lease of different ownership is dedicated to the well, have the interests of all owners been consolidated by communitization, unitization, force-pooling, etc?
- ☐ Yes ☐ No If answer is "yes," type of consolidation _____

If answer is "no," list the owners and tract descriptions which have actually been consolidated. (Use reverse side of this form if necessary.) _____

No allowable will be assigned to the well until all interests have been consolidated (by communitization, unitization, forced-pooling, or otherwise) or until a non-standard unit, eliminating such interests, has been approved by the Commission.



CERTIFICATION

I hereby certify that the information contained herein is true and complete to the best of my knowledge and belief.

Ken White

Name

Regulatory Administrator

Position

Union Texas Petroleum Corp.

Company

Ken White

Date

9-4-85

I hereby certify that the well location shown on this plat was plotted from field notes of actual surveys made by me or under my supervision, and that the same is true and correct to the best of my knowledge and belief.

Date Surveyed

Registered Professional Engineer
and/or Land Surveyor

RECEIVED

SEP 11 1985

O.C.B.
HODGS OFFICE