

STATE OF NEW MEXICO
ENERGY AND MINERALS DEPARTMENT

CONSERVATION DIVISION
P. O. BOX 2088
SANTA FE, NEW MEXICO 87501

30-025-28657
Form C-101
Revised 10-1-78

NO. OF COPIES RECEIVED	
DISTRIBUTION	
SANTA FE	
FILE	
U.S.G.S.	
LAND OFFICE	
OPERATOR	

5A. Indicate Type of Lease
STATE ☐ FEE ☒

5. State Oil & Gas Lease No.

APPLICATION FOR PERMIT TO DRILL, DEEPEN, OR PLUG BACK

1a. Type of Work

DRILL ☒

DEEPEN ☐

PLUG BACK ☐

b. Type of Well

OIL WELL ☐

GAS WELL ☒

OTHER

SINGLE ZONE ☐

MULTIPLE ZONE ☐

2. Name of Operator

Yates Petroleum Corporation

3. Address of Operator

207 S. 4th, Artesia, New Mexico 88210

4. Location of Well

UNIT LETTER C LOCATED 660 FEET FROM THE North LINE

AND 2310 FEET FROM THE West LINE OF SEC. 27 TWP. 16S RGE. 37E NMPM

7. Unit Agreement Name

8. Farm or Lease Name

Shipp "ZI"

9. Well No.

1

10. Field and Pool, or Wildcat

NE Lovington Penn

17. County

Lea

1. Elevations (show whether DF, KI, etc.)

3783.6' GL

21A. Kind & Status Plug. Bond

Blanket

19. Proposed Depth

12200'

19A. Formation

Strawn

20. Rotary or C.T.

Rotary

21B. Drilling Contractor

Landis #1

22. Approx. Date Work will start

ASAP

3.

PROPOSED CASING AND CEMENT PROGRAM

EXPIRING LEASE 4/5/84

SIZE OF HOLE	SIZE OF CASING	WEIGHT PER FOOT	SETTING DEPTH	SACKS OF CEMENT	EST. TOP
17 1/2"	13 3/8"	48# J-55	450'	400 sx	circ
12 1/4"	8 5/8"	24# J-55	4325'	1300 sx	400'
7 7/8"	5 1/2"	17# N-80-L	TD	450 sx	9200'
		17# N-55-L			
		17# N-55-S			
		17# N-80-L			

We propose to drill a 12200' well and test the Strawn and intermediate formations. Approximately 450' of surface casing will be set and cement circulated and approximately 4325' of intermediate will be set and cement circulated back to about 400'. Production casing will be set and cemented back to approximately 9200'.

MUD PROGRAM: FW gel to 375', native mud 4200', water/paper to 7500'.

BOP PROGRAM: BOP'S will be installed at the offset and tested daily.

APPROVAL VALID FOR 180 DAYS

PERMIT EXPIRES 9/28/84

UNLESS DRILLING UNDERWAY

NSL APPROVED - ORDER #R7476

4. ABOVE SPACE DESCRIBE PROPOSED PROGRAM; IF PROPOSAL IS TO DEEPEN OR PLUG BACK, GIVE DATA ON PRESENT PRODUCTIVE ZONE AND PROPOSED NEW PRODUCTIVE ZONE. GIVE BLOWOUT PREVENTER PROGRAM, IF ANY.

hereby certify that the information above is true and complete to the best of my knowledge and belief.

Signed Eddie W. Seay Title Regulatory Agent Date 3/27/84

(This space for State Use)

Eddie W. Seay

APPROVED BY Oil & Gas Inspector TITLE DATE

CONDITIONS OF APPROVAL, IF ANY:

MAR 28 1984

RECEIVED
MAR 28 1984
O.C.D.
HOBBS OFFICE

**NEW MEXICO OIL CONSERVATION COMMISSION
WELL LOCATION AND ACREAGE DEDICATION PLAT**

Form C-102
Supersedes C-128
Effective 1-1-65

All distances must be from the outer boundaries of the Section.

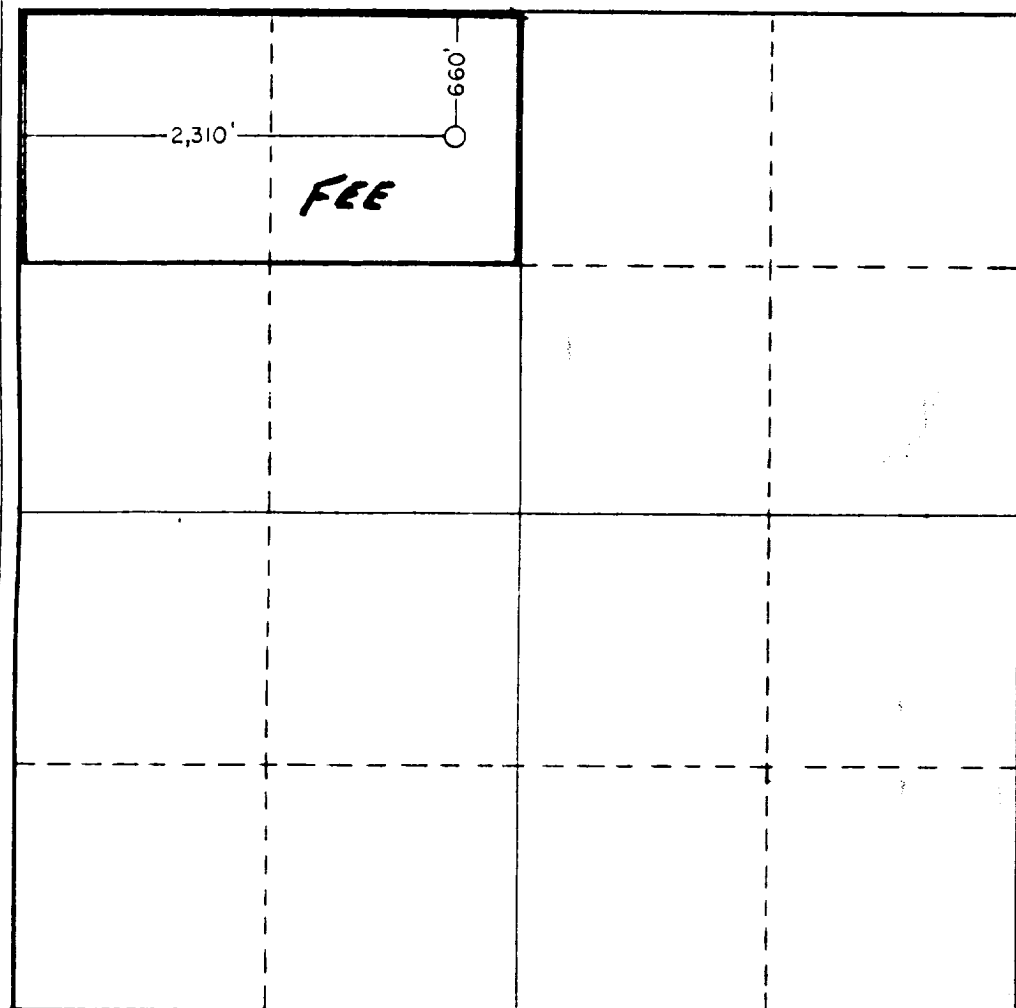
Operator YATES PETROLEUM CORP.			Lease Shipp ZI		Well No. 1
Unit Letter C	Section 27	Township 16 South	Range 37 East	County Lea	
Actual Footage Location of Well: <div style="display: flex; justify-content: space-between;"> 660 feet from the North line and 2,310 feet from the West line </div>					
Ground Level Elev. 3783.6	Producing Formation Strawn	Pool NE Louington Penn	Dedicated Acreage: 80 Acres		

1. Outline the acreage dedicated to the subject well by colored pencil or hatchure marks on the plat below.
2. If more than one lease is dedicated to the well, outline each and identify the ownership thereof (both as to working interest and royalty).
3. If more than one lease of different ownership is dedicated to the well, have the interests of all owners been consolidated by communitization, unitization, force-pooling, etc?

☐ Yes ☒ No If answer is "yes," type of consolidation _____

If answer is "no," list the owners and tract descriptions which have actually been consolidated. (Use reverse side of this form if necessary.) _____

No allowable will be assigned to the well until all interests have been consolidated (by communitization, unitization, forced-pooling, or otherwise) or until a non-standard unit, eliminating such interests, has been approved by the Commission.



CERTIFICATION

I hereby certify that the information contained herein is true and complete to the best of my knowledge and belief.

Cy Cowan
Name

Cy Cowan

Position

Regulatory Agent

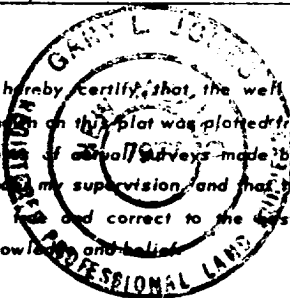
Company

Yates Petroleum Corp.

Date

3/28/84

I hereby certify that the well location shown on this plat was plotted from field notes of actual surveys made by me or under my supervision and that the same is true and correct to the best of my knowledge and belief.



Date Surveyed

March 26, 1984

Registered Professional Engineer and/or Land Surveyor

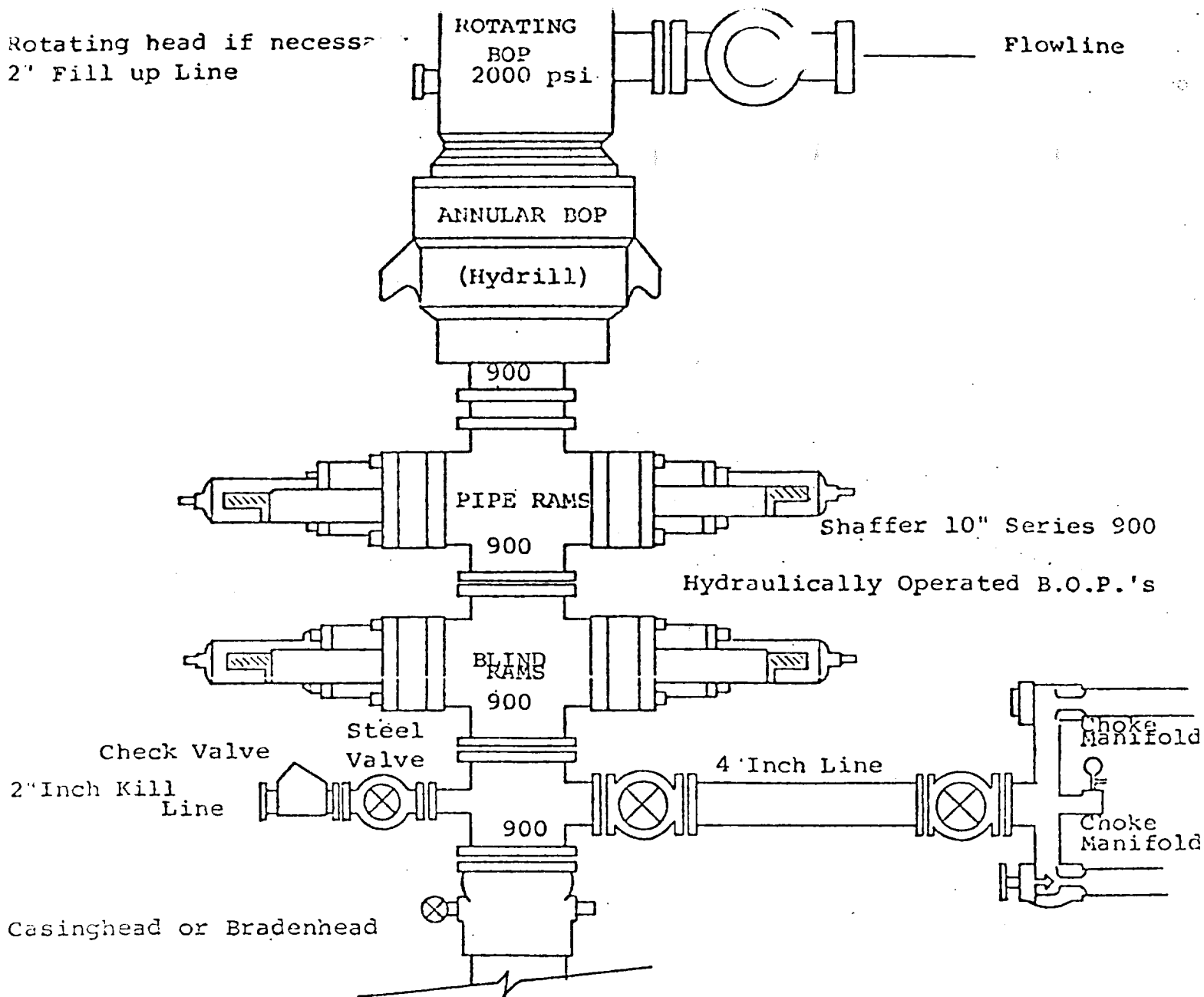
Gary L. Jones

Certificate No.

7977



Rotating head if necessary
2" Fill up Line



THE FOLLOWING CONSTITUTE MINIMUM BLOWOUT PREVENTER REQUIREMENTS

1. All preventers to be hydraulically operated with secondary manual controls installed prior to drilling out from under casing.
2. Choke outlet to be a minimum of 4" diameter.
3. Kill line to be of all steel construction of 2" minimum diameter.
4. All connections from operating manifolds to preventers to be all steel. hole or tube a minimum of one inch in diameter.
5. The available closing pressure shall be at least 15% in excess of that required with sufficient volume to operate the B.O.P.'s.
6. All connections to and from preventer to have a pressure rating equivalent to that of the B.O.P.'s.
7. Inside blowout preventer to be available on rig floor. Operating controls located a safe distance from the rig floor. Hole must be kept filled on trips below intermediate casing.
8. D. P. float must be installed and used below zone of first gas intrusion.

RECEIVED
MAR 28 1984
O.C.D.
HARRIS COUNTY

ELF

7-19-84