

All distances must be from the outer boundaries of the Section.

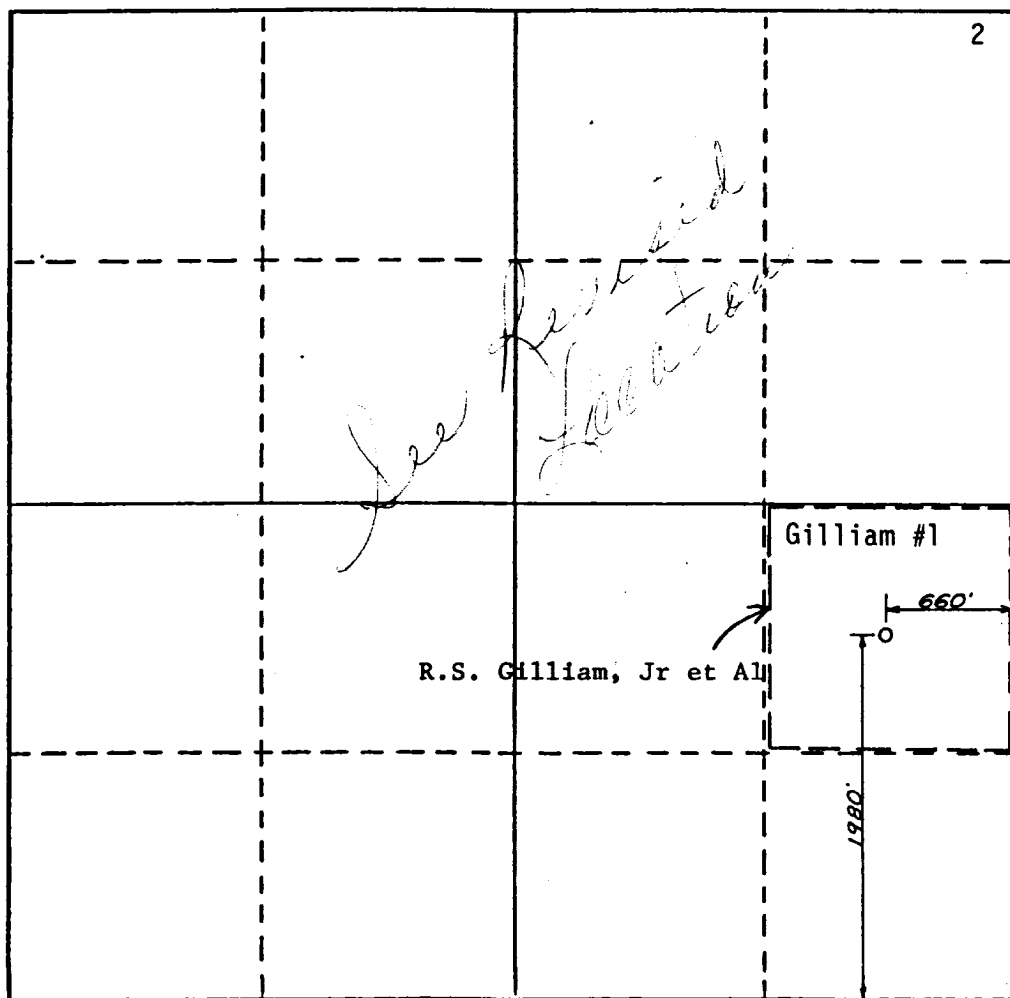
Operator <b>Florida Exploration</b>		Lease <b>Gilliam</b>		Well No. <b>1</b>	
Unit Letter <b>I</b>	Section <b>2</b>	Township <b>15-S</b>	Range <b>36-E</b>	County <b>Lea</b>	
Actual Footage Location of Well: <b>1980</b> feet from the <b>South</b> <b>660</b> feet from the <b>East</b> line					
Ground Level Elev. <b>3880'</b>	Producing Formation <b>Wolfcamp</b>	Pool <b>UNDESIGNATED</b> <b>Wolfcamp</b>		Dedicated Acreage <b>40</b> Acres	

1. Outline the acreage dedicated to the subject well by colored pencil or hachure marks on the plat below.
2. If more than one lease is dedicated to the well, outline each and identify the ownership thereof (both as to working interest and royalty).
3. If more than one lease of different ownership is dedicated to the well, have the interests of all owners been consolidated by communitization, unitization, force-pooling, etc? Not applicable

☐ Yes ☐ No If answer is "yes," type of consolidation ---

If answer is "no," list the owners and tract descriptions which have actually been consolidated. (Use reverse side of this form if necessary.) ---

No allowable will be assigned to the well until all interests have been consolidated (by communitization, unitization, forced-pooling, or otherwise) or until a non-standard unit, eliminating such interests, has been approved by the Division.



#### CERTIFICATION

I hereby certify that the information contained herein is true and complete to the best of my knowledge and belief.

*Gerald D. Gentry*

Name **Gerald D. Gentry**  
Position **Operations Manager**

Company **Florida Exploration Co**

Date **5/17/84**

I hereby certify that the well location shown on this plat was plotted from field notes of actual surveys made by me or under my supervision, and that the same is true and correct to the best of my knowledge and belief.

May 9, 1984

Date Surveyed  
**RICHARD B. DUNN**

Registered Professional Engineer  
and/or Land Surveyor

*Richard B. Dunn*  
Certificate No. **4882**

0 330 660 990 1320 1650 1980 2310 2640 2970 3300 3630 3960 4290 4620 4950 5280 5610 5940 6270 6600

MAY 23 1984  
O.C.D.  
HOBBS OFFICE

113