

OIL CONSERVATION DIVISION AMENDEDSTATE OF NEW MEXICO
ENERGY AND MINERALS DEPARTMENT

P. O. BOX 2088

SANTA FE, NEW MEXICO 87501

102
10-1-78

All distances must be from the outer boundaries of the Section.

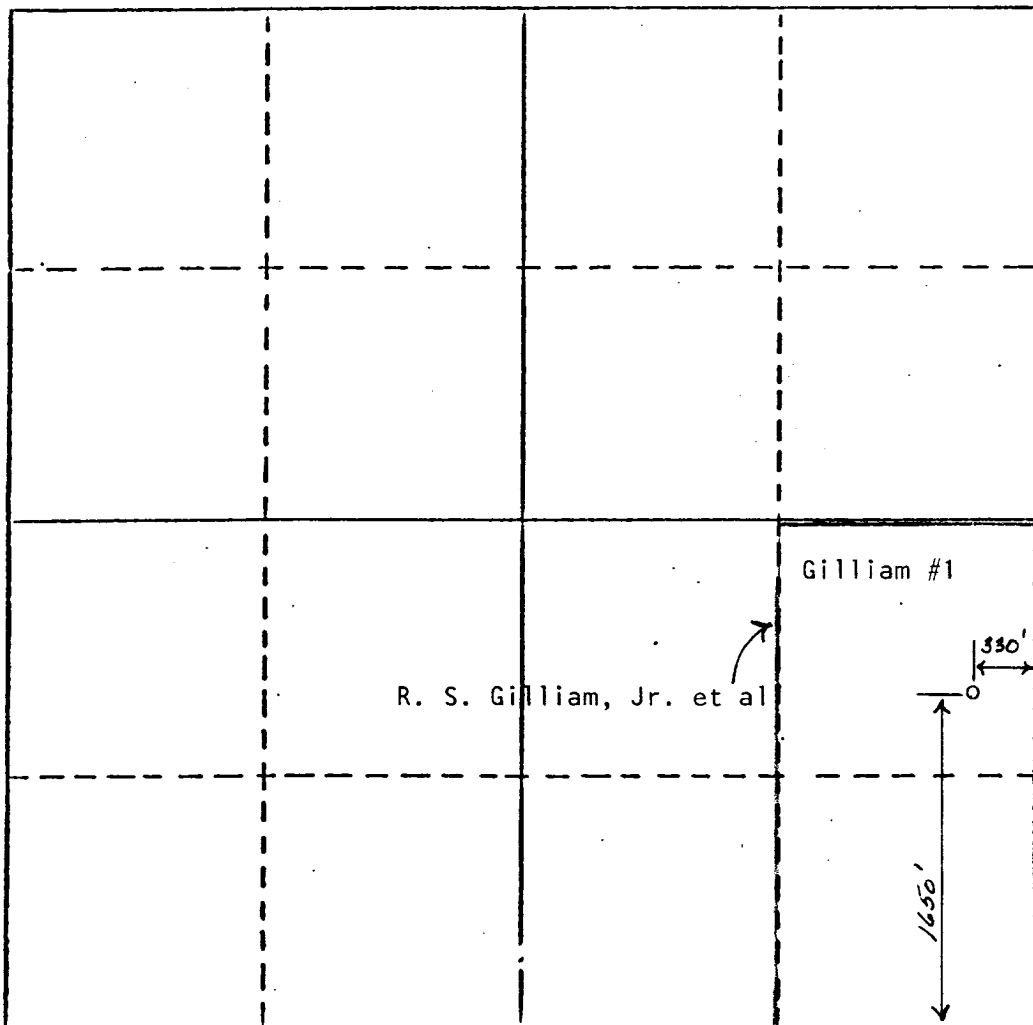
Operator Apache Corporation			Lease Gilliam			Well No. 1		
Unit Letter 1	Section 2	Township 15-S	Range 36-E	County Lea				
Actual Footage Location of Well: 1650 feet from the South line and 330 feet from the East line								
Ground Level Elev. 3880'	Producing Formation Wolfcamp		Pool Wolfcamp			Dedicated Acreage: 80 Acres		

1. Outline the acreage dedicated to the subject well by colored pencil or hatchure marks on the plat below.
2. If more than one lease is dedicated to the well, outline each and identify the ownership thereof (both as to working interest and royalty).
3. If more than one lease of different ownership is dedicated to the well, have the interests of all owners been consolidated by communitization, unitization, force-pooling, etc?

☐ Yes ☐ No If answer is "yes," type of consolidation _____

If answer is "no," list the owners and tract descriptions which have actually been consolidated. (Use reverse side of this form if necessary.) _____

No allowable will be assigned to the well until all interests have been consolidated (by communitization, unitization, force-pooling, or otherwise) or until a non-standard unit, eliminating such interests, has been approved by the Division.



CERTIFICATION

I hereby certify that the information contained herein is true and complete to the best of my knowledge and belief.

Name

Newton L. Lang

Position

Mgr., Reservoir Engineering

Company

Apache Corporation

Date

August 12, 1985

I hereby certify that the well location shown on this plat was plotted from field notes of actual surveys made by me or under my supervision, and that the same is true and correct to the best of my knowledge and belief.

Date Surveyed

Registered Professional Engineer
and/or Land Surveyor

Certificate No.