

WELL LOCATION AND ACREAGE DEDICATION PLAT

Form C-102
Superseded C-128
Effective 1-1-85

All distances must be from the outer boundaries of the Section.

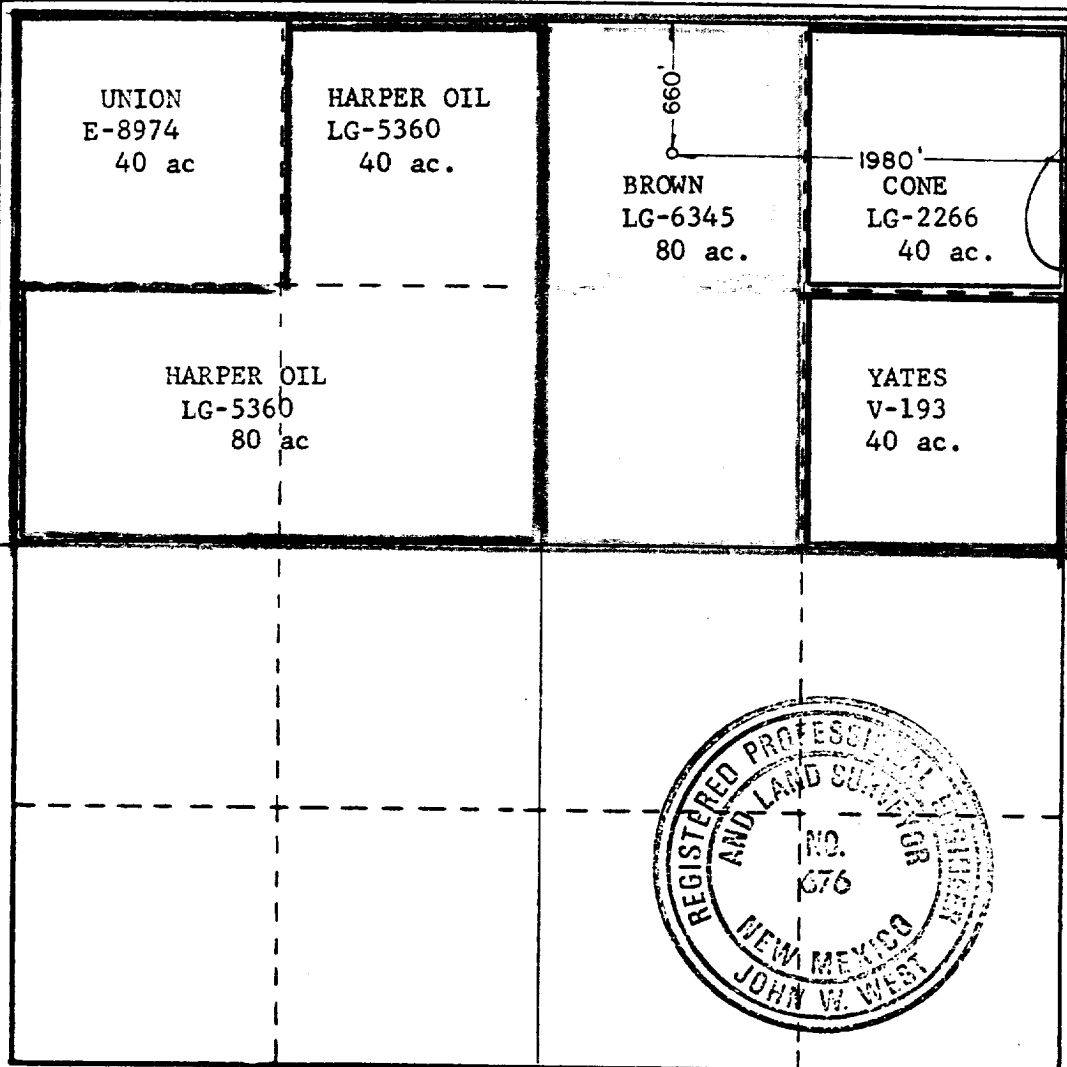
Operator UNION OIL OF CALIFORNIA			Lease BROWN STATE UNIT		Well No. 1
Unit Letter B	Section 28	Township 15S	Range 32E	County LEA	
Actual Footage Location of Well: 1980 feet from the EAST line and 660 feet from the NORTH line					
Ground Level Elev. 4307.9	Producing Formation Wolfcamp	Pool ANDERSON RANCH WOLFCAMP, NORTH		Dedicated Acreage: 80 Acres	

1. Outline the acreage dedicated to the subject well by colored pencil or hatchure marks on the plat below.
2. If more than one lease is dedicated to the well, outline each and identify the ownership thereof (both as to working interest and royalty).
3. If more than one lease of different ownership is dedicated to the well, have the interests of all owners been consolidated by communitization, unitization, force-pooling, etc?

☒ Yes ☐ No If answer is "yes," type of consolidation STATE OF NEW MEXICO APPROVED UNIT

If answer is "no," list the owners and tract descriptions which have actually been consolidated. (Use reverse side of this form if necessary.)

No allowable will be assigned to the well until all interests have been consolidated (by communitization, unitization, forced-pooling, or otherwise) or until a non-standard unit, eliminating such interests, has been approved by the Commission.



CERTIFICATION

I hereby certify that the information contained herein is true and complete to the best of my knowledge and belief.

J.R. Hughes
J.R. HUGHES

DISTRICT DRILLING SUPT.

Position

UNION OIL COMPANY OF CALIFORNIA

Company

FEB. 27, 1985

Date

I hereby certify that the well location shown on this plat was plotted from field notes of actual surveys made by me or under my supervision, and that the same is true and correct to the best of my knowledge and belief.

Date Surveyed

5/22/84

Registered Professional Engineer
and/or Land Surveyor

John W. West

Certificate No. JOHN W. WEST, 676

RONALD J. EIDSON, 3239



RECEIVED

MAY 22 1985

O.C.D.
HOBBS OFFICE



COUNTY: LEA FIELD Feather STATE NM
 OPR UNION OIL OF CALIF API 30-025-28761
 NO 1 LEASE Brown State Unit MAP
 Sec 28, T15S, R32E CO-ORD
 660 FNL, 1980 FEL of Sec 6-2-21 NM
 27 mi S/Caprock SPD 8-10-84 CMP 2-4-85

CSG

13 3/8-460-350 sx
 8 5/8-4120-2000 sx
 5 1/2-12, 93-2500 sx
 2 7/8-994'

WELL CLASS: INIT D FIN DO LSE. CODE

FORMATION	DATUM	FORMATION	DATUM
TD	12,493 (MRRW)	PBD	10,031

IP (Wolfcamp) Perfs 9832-9838 P 26 BOPD + 4 BW. Pot based on
 24 hr test. GOR 1385; gty 40.5

CONTR Willbros Drlg #4 OPRS ELEV 4308 GR SUBS 14

F.R. 6-18-84
 PD 12,500 RT (Wolfcamp)
 6-8-85 AMEND ZONE: Formerly (Morrow)
 8-14-84 Drlg 2980
 8-21-84 Drlg 4245
 8-28-84 Drlg 7457
 9-4-84 Drlg 9564
 9-18-84 Drlg 11,021
 9-25-84 Drlg 12,242
 10-2-84 TD 12,493; WOCT
 No Cores or DST's
 11-1-84 TD 12,493; MICT
 12-6-84 TD 12,493; Swbg
 Perf (Morrow) 12,390-12,409 w/48 shots
 6-2-21 NM

LEA
UNION OIL
OF CALIF

Feather
1 Brown State Unit
Sec 28, T15S, R32E

NM
Page #2

12-6-84

Continued

Acid (12,390-12,409) 1500 gals
Sqzd (12,390-12,409) 100 sx & DOC
Perf (Morrow) 12,356-12,374 w/61 shots
Acid (12,356-12,374) 300 gals
Sqzd (12,356-12,374) 100 sx & DOC
Perf (Morrow) 12,328-12,334 w/24 shots
Acid (12,328-12,334) 1000 gals (7 1/2 %)
Swbd 12 BW w/NS in 7 hrs (12,328-12,334)
12-27-84 TD 12,493; PBD 10,574; Swbg
CIBP @ 12,235

6-2-21 NM

12-27-84

Continued

Perf (Canyon) 10,624-10,632 w/32 shots
Acid (10,624-10,632) 2000 gals
CIBP @ 10,574
Perf (Cisco) 10,116-10,123, 10,280-10,286
Swbd 35 BLW in 4 hrs (10,116-10,286)

1-3-85

TD 12,493; PBD 10,574; Tstg
Acid (10,116-10,286) 600 gals (20%)

5-9-85

TD 12,493; PBD 10,031; WOPT

CIBP @ 10,031

Perf (Wolfcamp) 9832-9838 w/14 shots

Acid (9832-9838) 2000 gals

Ppd 26 BO + 4 BW in 24 hrs (9832-9838)

6-3-85

TD 12,493; PBD 10,031; Complete

LOG TOPS: San Andres 4148, Glorieta 5716,

Tubb 6930, Abo 7682, Wolfcamp 8848, Cisco

6-2-21 NM

LEA
UNION OIL
OF CALIF

Feather
1 Brown State Unit
Sec 28, T15S, R32E

NM
Page #3

6-3-85

Continued

10,148, Canyon 10,621, Strawn 11,271, Atoka
11,516, Morrow 12,072

LOGS RUN: GRL, CNL, MSFL, LDT, DLL, CCL

6-8-85

COMPLETION ISSUED

6-2-21 NM
IC 30-025-79273-84