

STATE OF NEW MEXICO  
ENERGY AND MINERALS DEPARTMENT

OIL CONSERVATION DIVISION  
P. O. BOX 2088  
SANTA FE, NEW MEXICO 87501

Form C-101  
Revised 10-1-78

NO. OF COPIES RECEIVED	
DISTRIBUTION	
SANTA FE	
FILE	
U.S.G.S.	
LAND OFFICE	
OPERATOR	

5A. Indicate Type of Lease  
STATE ☒ FEE ☐  
5. State Oil & Gas Lease No.  
E-10160

APPLICATION FOR PERMIT TO DRILL, DEEPEN, OR PLUG BACK

1a. Type of Work  
b. Type of Well DRILL ☒ DEEPEN ☐ PLUG BACK ☐  
OIL WELL ☐ GAS WELL ☒ OTHER ☐ SINGLE ZONE ☒ MULTIPLE ZONE ☐  
2. Name of Operator  
Exxon Corporation  
3. Address of Operator  
P. O. Box 1600, Midland, TX 79702  
4. Location of Well  
UNIT LETTER 0 LOCATED 660 FEET FROM THE South LINE  
AND 2280 FEET FROM THE East LINE OF SEC. 22 TWP. 16S RGE. 34E NMPM  
10. Field and Pool, or Wildcat  
Undesig. South Kemnitz  
Atoka/Morrow  
12. County  
Lea  
19. Proposed Depth  
13,300'  
19A. Formation  
Morrow  
20. Rotary or C.T.  
Rotary  
21. Elevations (Show whether DH, RT, etc.)  
4073' GR  
21A. Kind & Status Plug. Bond  
Blanket  
21B. Drilling Contractor  
Unknown  
22. Approx. Date Work will start  
Upon Approval

23. PROPOSED CASING AND CEMENT PROGRAM

SIZE OF HOLE	SIZE OF CASING	WEIGHT PER FOOT	SETTING DEPTH	SACKS OF CEMENT	EST. TOP
17 1/2"	13 3/8"	54.5	500	350	Surface
12 1/4"	9 5/8"	36	5000	1500	Surface
8 3/4"	5 1/2"	17	TD	2000	5000

Mud: 0 - 500 - FW Spud uncontrolled  
500 - 5000 - BW 9.5-10.0  
5000 - 10000 - FW 8.5-9.0  
10000 - 13300 - FWM 9.0-11.0

BOP: Type RSRA BOP Stack

Diagrammatic sketch and specifications of BOP are attached. Gas is not dedicated to a purchaser. (Gas Well Only)

Permit Expires 6 Months From Approval  
Date Unless Drilling Underway.

ABOVE SPACE DESCRIBE PROPOSED PROGRAM; IF PROPOSAL IS TO DEEPEN OR PLUG BACK, GIVE DATA ON PRESENT PRODUCTIVE ZONE AND PROPOSED NEW PRODUCTIVE ZONE. GIVE BLOWOUT PREVENTER PROGRAM, IF ANY.

hereby certify that the information above is true and complete to the best of my knowledge and belief.

Signed Melba Kipling Title Unit Head Date 11-26-84

(This space for State Use)

ORIGINAL SIGNED BY JERRY SEXTON  
DISTRICT SUPERVISOR

APPROVED BY JERRY SEXTON TITLE DISTRICT SUPERVISOR DATE NOV 28 1984

CONDITIONS OF APPROVAL, IF ANY:

RECEIVED

NOV 27 1984

O.C.D.  
HOMES OFFICE

Exxon Lse No. \_\_\_\_\_ N \_\_\_\_\_ CO OIL CONSERVATION COMMISS  
State Lse No. \_\_\_\_\_ WELL LOCATION AND ACREAGE DEDICATION PLAT  
Federal Lse No. \_\_\_\_\_ All distances must be from the outer boundaries of the Section.

Form C-102  
Supersedes C-128  
Effective 1-1-65

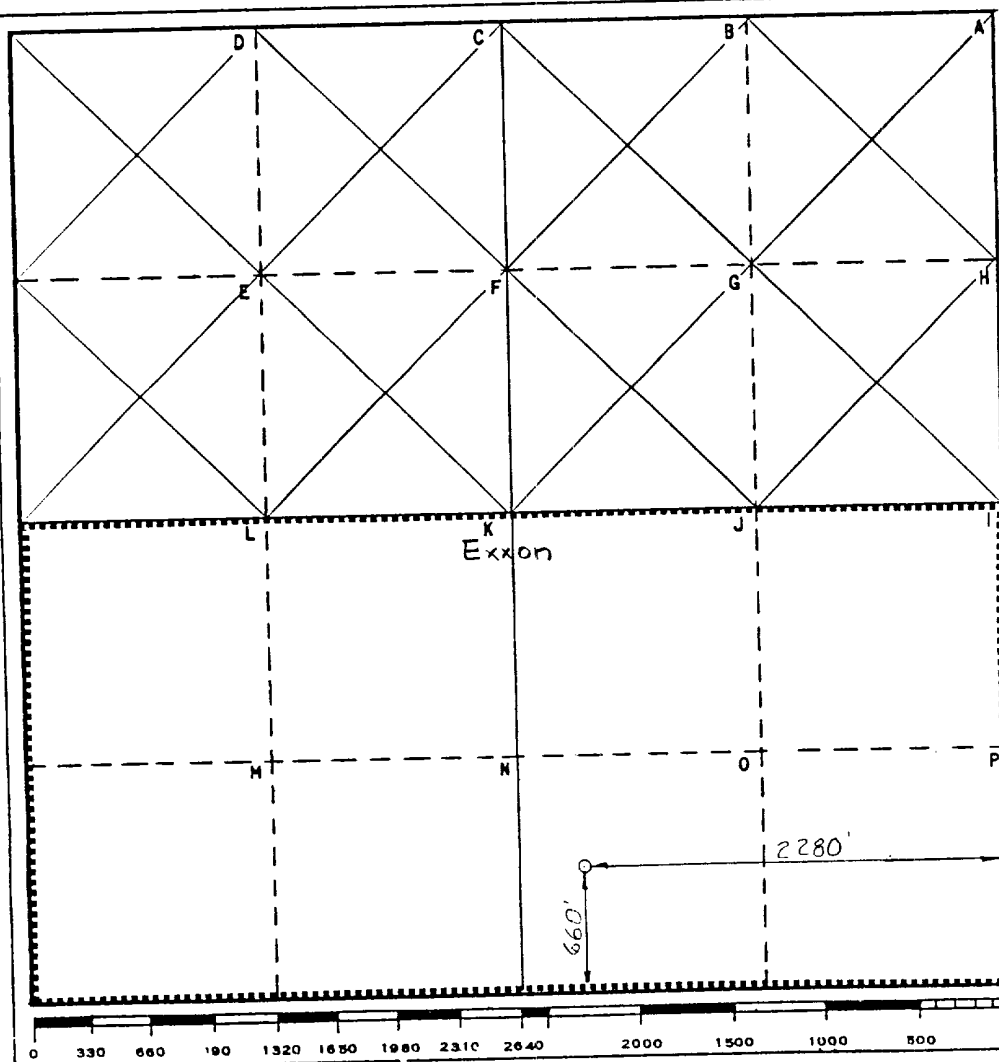
Operator Exxon Corporation		Lease NEW MEXICO "EJ" STATE		Well No. 1
Unit Letter P	Section 22	Township 16S	Range 34E	County LEA
Actual Footage Location of Well: 660 feet from the SOUTH line and 990 2280 feet from the EAST line				
Ground Level Elev. 4073'	Producing Formation MORROW	Pool UNDESIG. KEMNITZ ATOKA/MORROW	Dedicated Acreage 320	Acres

1. Outline the acreage dedicated to the subject well by colored pencil or hachure marks on the plat below.
2. If more than one lease is dedicated to the well, outline each and identify the ownership thereof (both as to working interest and royalty).
3. If more than one lease of different ownership is dedicated to the well, have the interests of all owners been consolidated by communitization, unitization, force-pooling, etc?

☐ Yes ☐ No If answer is "yes," type of consolidation \_\_\_\_\_

If answer is "no," list the owners and tract descriptions which have actually been consolidated. (Use reverse side of this form if necessary.) \_\_\_\_\_

No allowable will be assigned to the well until all interests have been consolidated (by communitization, unitization, forced-pooling, or otherwise) or until a non-standard unit, eliminating such interests, has been approved by the Commission.



#### CERTIFICATION

I hereby certify that the information contained herein is true and complete to the best of my knowledge and belief.

Name  
*Melvin Knippling*

Position  
UNIT HEAD

Company Exxon Corporation  
Box 1600 Midland, Texas

Date  
11-26-84

I hereby certify that the well location shown on this plat was plotted from field notes of actual surveys made by me or under my supervision, and that the same is true and correct to the best of my knowledge and belief.

Date Surveyed  
11-8-84

Registered Professional Engineer  
and/or Land Surveyor

*Bruce R. Pennel*

Certificate No.

# 9062

11 Miles SW of LOVINGTON, New Mexico

C.E. Sec. File No. W-A-8621

JULY, 1984

RECEIVED

NOV 27 1984

O.C.D.  
HOSBOS OFFICE

**COMPONENT SPECIFICATIONS**  
**type RSRA BOP Stack**

1. Flanged hydraulically controlled gate valve -- 3" minimum nominal diameter -- same working pressure as BOP stack.
2. Flanged plug or gate valve -- 3" minimum nominal diameter -- same working pressure as BOP stack.
3. Drilling spool with flanged side outlets -- minimum 3" choke and minimum 2" kill line.
4. Flanged plug or gate valve -- 2" minimum nominal diameter -- same working pressure as BOP stack.
5. Flanged cross or two (2) flanged tees.

NOTE: Each BOP stack must have separate side outlet connections for kill and choke lines, unless specific approval for a single side-outlet is obtained from the Exxon Division Drilling Manager prior to rig-up. Such approval will not be granted unless the equipment arrangement conforms to the specifications shown on pages 14 and 15 of this Section.

RECEIVED

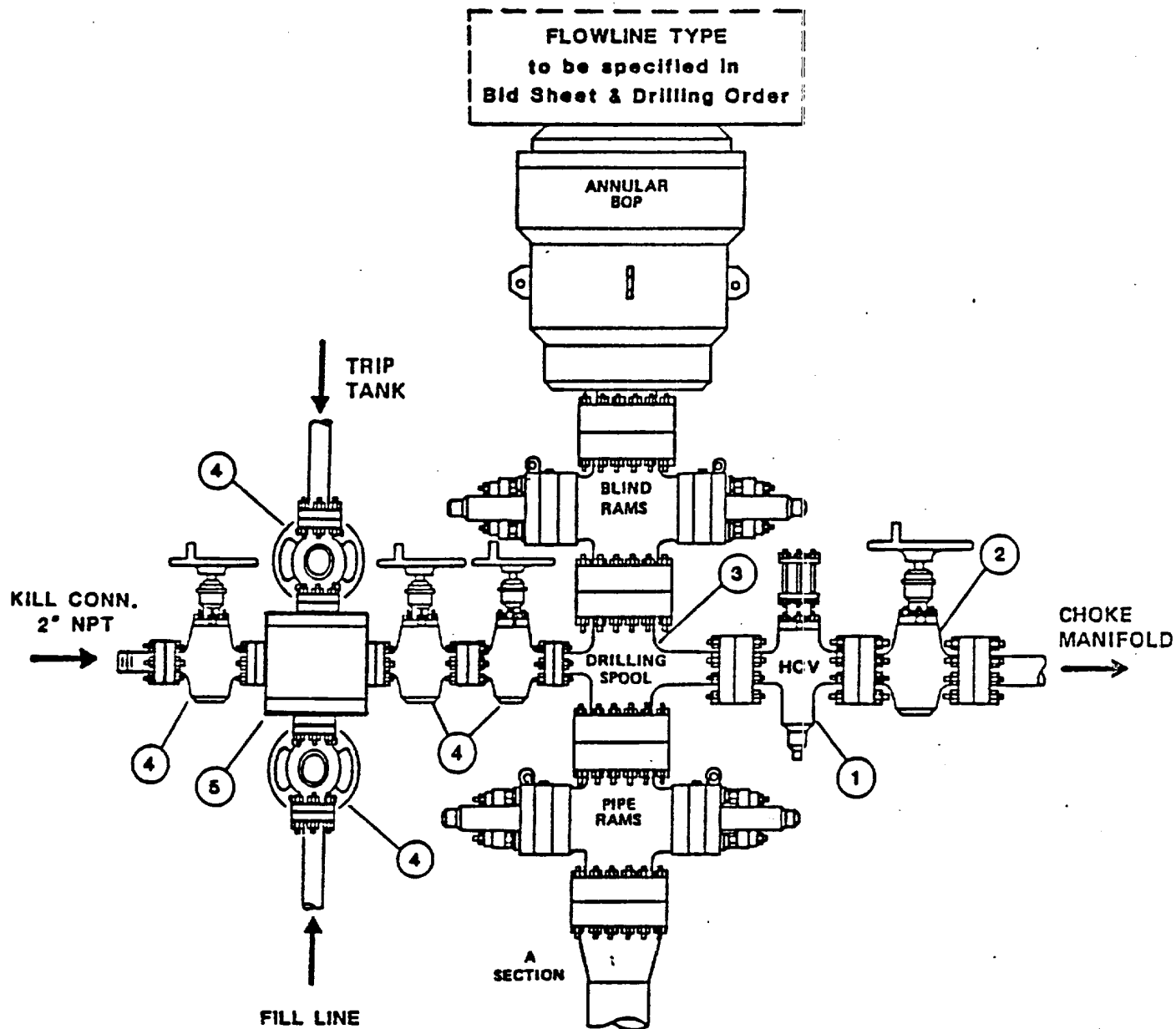
NOV 27 1984

O.C.B.  
HOMES OFFICE

11/27/84  
11/27/84  
11/27/84

# TYPE RSRA BOP STACK

## THREE PREVENTERS



RECEIVED

NOV 27 1984

O.C.B.  
HOBBS OFFICE