

NE MEXICO OIL CONSERVATION COMMISSION
WELL LOCATION AND ACREAGE DEDICATION PLAT

Form C-128
Supersedes C-128
Effective 1-1-65

All distances must be from the outer boundaries of the Section

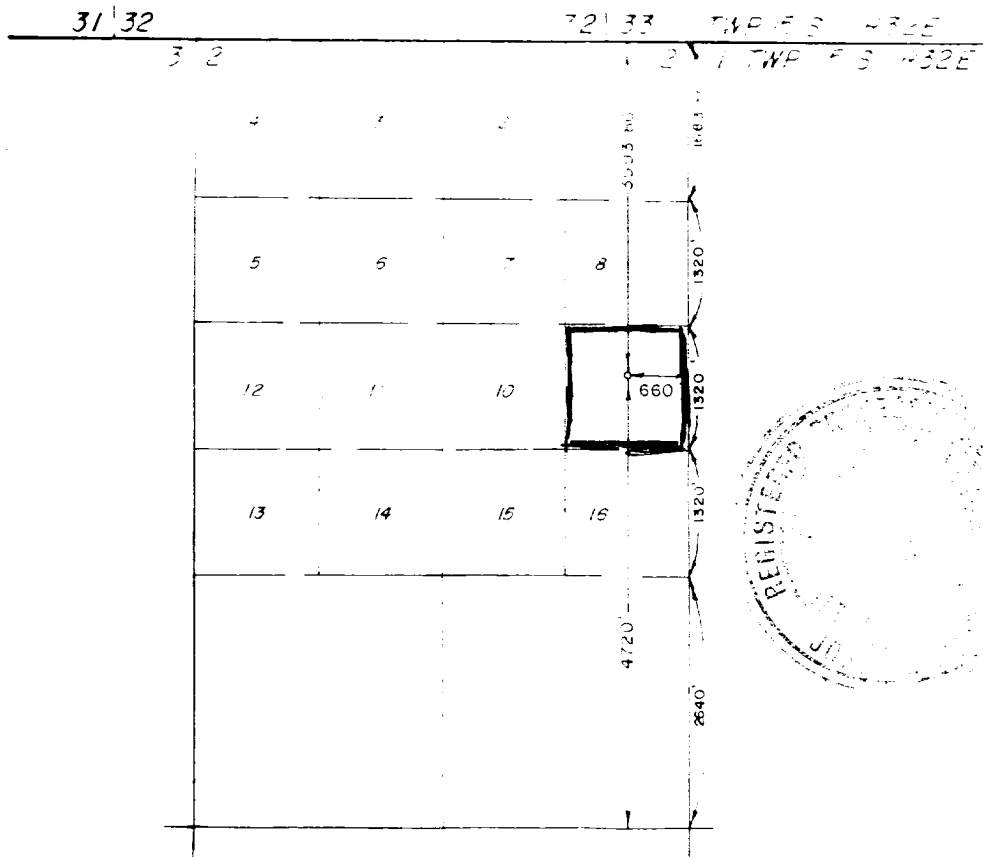
Operator Sun Exploration & Production Co.		Lease STATE LAND 76		Well No. 3
Unit Letter I	Section 2	Township 16S	Range 32E	County DEA
Actual Footage Location of Well: 660 feet from the EAST line and 4720 feet from the SOUTH line				
Ground Level Elev. +301.0	Producing Formation Canyon	Pool Anderson Ranch - Cisco Canyon	Dedicated Acreage: 40 Acres	

1. Outline the acreage dedicated to the subject well by colored pencil or hachure marks on the plat below.
2. If more than one lease is dedicated to the well, outline each and identify the ownership thereof (both as to working interest and royalty).
3. If more than one lease of different ownership is dedicated to the well, have the interests of all owners been consolidated by communitization, unitization, force-pooling, etc?

☐ Yes ☐ No If answer is "yes," type of consolidation _____

If answer is "no," list the owners and tract descriptions which have actually been consolidated. (Use reverse side of this form if necessary.) _____

No allowable will be assigned to the well until all interests have been consolidated (by communitization, unitization, forced-pooling, or otherwise) or until a non-standard unit, eliminating such interests, has been approved by the Commission.



Scale: 1" = 200'

I hereby certify that the information contained herein is true and complete to the best of my knowledge and belief.	
Name Dee Ann Kemp	Position Associate Accountant
Company Sun Exploration & Prod. Co.	
Date December 11, 1984	
I hereby certify that the well location shown on this plat was plotted from field notes of actual surveys made by me or under my supervision, and that the same is true and correct to the best of my knowledge and belief.	
Date Surveyed 12/6/84	
Registered Professional Engineer and/or Land Surveyor Schwartz	
Certificate No. JOHN W. WEST	678
Ronald J. Eidson 3239	

RECEIVED

DEC 12 1984

100-100000

ELF