

N. MEXICO OIL CONSERVATION COMMISS  
WELL LOCATION AND ACREAGE DEDICATION PLAT

Form C-102  
Supersedes C-128  
Effective 1-1-65

All distances must be from the outer boundaries of the Section

Operator Sun Exploration & Production Co.		Lease STATE LAND 76		Well No. 4	
Unit Letter E	Section 1	Township 16S	Range 32E	County LEA	
Actual Footage Location of Well:					
1323 feet from the NORTH line and		330 feet from the WEST line			
Ground Level Elev. 4175.1	Producing Formation Canyon	Pool Anderson Ranch - Cisco Canyon	Dedicated Acreage: 40 Acres		

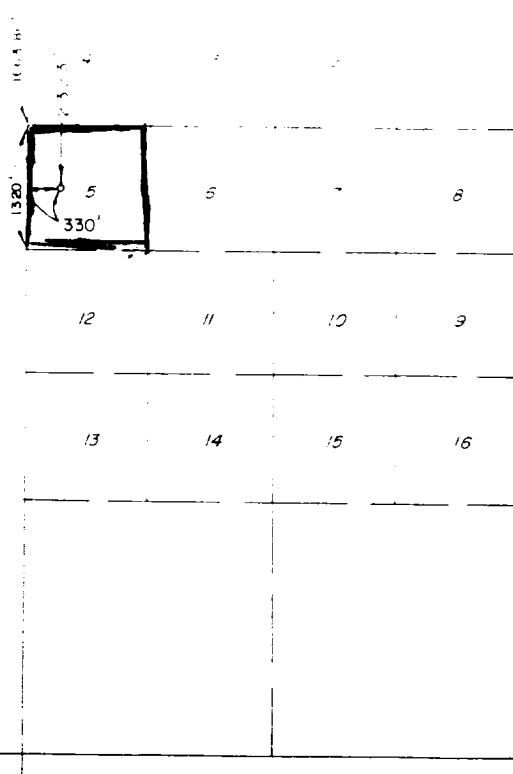
1. Outline the acreage dedicated to the subject well by colored pencil or hachure marks on the plat below.
2. If more than one lease is dedicated to the well, outline each and identify the ownership thereof (both as to working interest and royalty).
3. If more than one lease of different ownership is dedicated to the well, have the interests of all owners been consolidated by communitization, unitization, force-pooling, etc?

☐ Yes ☐ No If answer is "yes," type of consolidation \_\_\_\_\_

If answer is "no," list the owners and tract descriptions which have actually been consolidated. (Use reverse side of this form if necessary.) \_\_\_\_\_

No allowable will be assigned to the well until all interests have been consolidated (by communitization, unitization, forced-pooling, or otherwise) or until a non-standard unit, eliminating such interests, has been approved by the Commission.

32 | TWP 15 S. R32E 33 34  
21 | TWP 15S R32E 1 2 TWP 15 S R33E



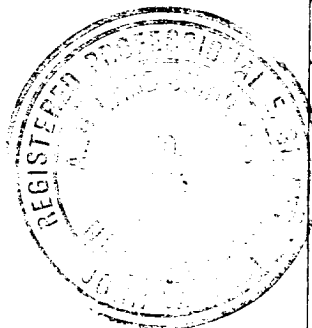
Scale: 1" = 2000'

CERTIFICATION

I hereby certify that the information contained herein is true and complete to the best of my knowledge and belief.

*Dee Ann Kemp*

Name  
Dee Ann Kemp  
Position  
Associate Accountant  
Company  
Sun Exploration & Prod. Co.  
Date  
December 11, 1984



I hereby certify that the well location shown on this plat was plotted from field notes of actual surveys made by me or under my supervision, and that the same is true and correct to the best of my knowledge and belief.

Date Surveyed  
12/6/84  
Registered Professional Engineer  
and/or Land Surveyor

*John W. West*  
Certificate No. JOHN W. WEST 676

Ronald J. Eidson 3239

REC  
DEC 12 1984

11