

Submit to Appropriate
District Office
State Lease - 6 copies
Fee Lease - 5 copies

State of New Mexico
Energy, Minerals and Natural Resources Department

Form C-101
Revised 1-1-89

OIL CONSERVATION DIVISION

DISTRICT I
P.O. Box 1980, Hobbs, NM 88240

P.O. Box 2088
Santa Fe, New Mexico 87504-2088

DISTRICT II
P.O. Drawer DD, Artesia, NM 88210

DISTRICT III
1000 Rio Brazos Rd., Aztec, NM 87410

API NO. (assigned by OCD on New Wells)

30-025-29208

5. Indicate Type of Lease

STATE ☒ FEE ☐

6. State Oil & Gas Lease No.

933763

APPLICATION FOR PERMIT TO DRILL, DEEPEN, OR PLUG BACK

1a. Type of Work:

DRILL ☐ RE-ENTER ☐ DEEPEN ☐ PLUG BACK ☒

b. Type of Well:

OIL WELL ☒ GAS WELL ☐ OTHER ☐ SINGLE ZONE ☒ MULTIPLE ZONE ☐

2. Name of Operator

Headington Oil Company

3. Address of Operator

7114 W. Jefferson Ave., Ste 213 - Denver, CO 80235

7. Lease Name or Unit Agreement Name

State Land 76

8. Well No.

5

9. Pool name or Wildcat

N. Anderson Ranch *Wolfe*

4. Well Location

Unit Letter J : 1650 Feet From The East Line and 4290 Feet From The South Line

Section 2 Township 16S Range 32E NMPM Lea County

10. Proposed Depth

PBTD 10,350'

11. Formation

Lower Wolfcamp

12. Rotary or C.T.

-

13. Elevations (Show whether DF, RT, GR, etc.)

4301.9' GR

14. Kind & Status Plug. Bond

Blanket, active

15. Drilling Contractor

-

16. Approx. Date Work will start

November, 1993

17. PROPOSED CASING AND CEMENT PROGRAM

SIZE OF HOLE	SIZE OF CASING	WEIGHT PER FOOT	SETTING DEPTH	SACKS OF CEMENT	EST. TOP
17 1/2	13 3/8	48#/ft	405'	400	surface
11	8 5/8	24 & 32#/ft	4,200'	1900	surface
7 7/8	5 1/2	17#/ft	10,629'	700	7000'*

* Temp. Survey

Plug back Canyon @ 10,350'. Open Lower Wolfcamp perms from 9796-9882'. Middle & Upper Wolfcamp produces in the #1 well as well as Canyon.

IN ABOVE SPACE DESCRIBE PROPOSED PROGRAM: IF PROPOSAL IS TO DEEPEN OR PLUG BACK, GIVE DATA ON PRESENT PRODUCTIVE ZONE AND PROPOSED NEW PRODUCTIVE ZONE. GIVE BLOWOUT PREVENTER PROGRAM, IF ANY.

I hereby certify that the information above is true and complete to the best of my knowledge and belief.

SIGNATURE Alfred R. Powell TITLE District Manager DATE 11/23/93

TYPE OR PRINT NAME Alfred R. Powell (303) 969-8280 TELEPHONE NO.

(This space for State Use)

ORIGINAL SIGNED BY JERRY SEXTON
DISTRICT I SUPERVISOR

APPROVED BY _____ TITLE _____ DATE DEC 07 1993

CONDITIONS OF APPROVAL, IF ANY:

Submit to Appropriate
District Office
State Lease - 4 copies
Fee Lease - 3 copies

State of New Mexico
Energy, Minerals and Natural Resources Department

Form C-102
Revised 1-1-89

OIL CONSERVATION DIVISION

P.O. Box 2088
Santa Fe, New Mexico 87504-2088

DISTRICT I
P.O. Box 1980, Hobbs, NM 88240

DISTRICT II
P.O. Drawer DD, Artesia, NM 88210

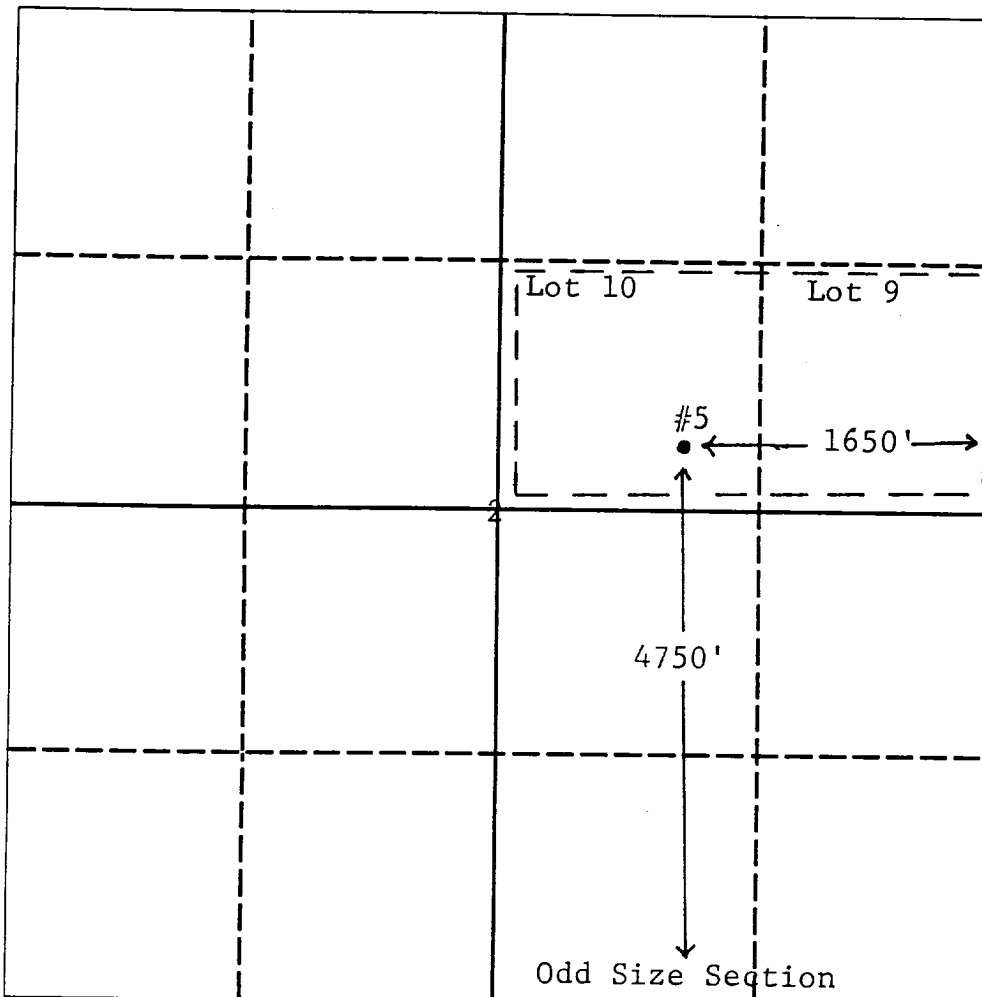
DISTRICT III
1000 Rio Brazos Rd., Aztec, NM 87410

WELL LOCATION AND ACREAGE DEDICATION PLAT

All Distances must be from the outer boundaries of the section

Operator Headington Oil Company			Lease State Land 76		Well No. 5
Unit Letter J	Section 2	Township 16S	Range 32E	County Lea	
Actual Footage Location of Well: 1650 feet from the East line and 4290 feet from the South line 2					
Ground level Elev. 4301.9'	Producing Formation Lower Wolfcamp		Pool Anderson Ranch	Dedicated Acreage: 80 Acres	

1. Outline the acreage dedicated to the subject well by colored pencil or hatchure marks on the plat below.
2. If more than one lease is dedicated to the well, outline each and identify the ownership thereof (both as to working interest and royalty).
3. If more than one lease of different ownership is dedicated to the well, have the interest of all owners been consolidated by communitization, unitization, force-pooling, etc.?
☐ Yes ☐ No If answer is "yes" type of consolidation n/a
If answer is "no" list the owners and tract descriptions which have actually been consolidated. (Use reverse side of this form if necessary).
No allowable will be assigned to the well until all interests have been consolidated (by communitization, unitization, forced-pooling, or otherwise) or until a non-standard unit, eliminating such interest, has been approved by the Division.



OPERATOR CERTIFICATION

I hereby certify that the information contained herein is true and complete to the best of my knowledge and belief.

Signature
Alfred R. Powell
Printed Name
District Manager
Position
Headington Oil Co.
Company
11/23/93
Date

SURVEYOR CERTIFICATION

I hereby certify that the well location shown on this plat was plotted from field notes of actual surveys made by me or under my supervision, and that the same is true and correct to the best of my knowledge and belief.

Date Surveyed
Signature & Seal of Professional Surveyor
Certificate No.

