

WELL LOCATION AND ACREAGE DEDICATION PLAT

Form C-102
Supersedes C-128
Effective 1-1-65

All distances must be from the outer boundaries of the Section.

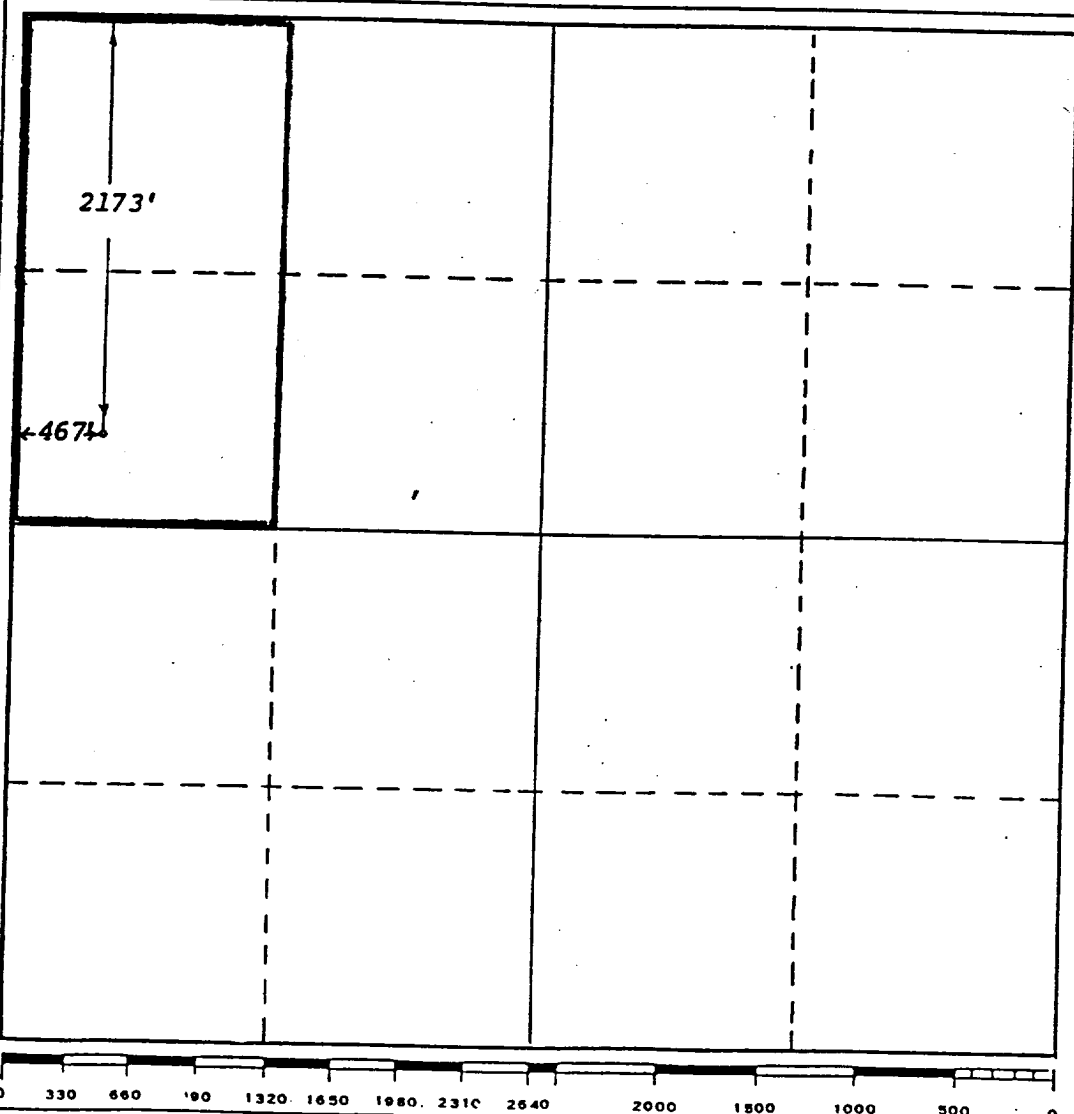
Operator H.L. BROWN, JR.			Lease Lovelady State		Well No. 1
Unit Letter E	Section 15	Township 15-S	Range 32-E	County LEA COUNTY	
Actual Footage Location of Well: 2173 feet from the North line and 467 feet from the West line					
Ground Level Elev: 4287'	Producing Formation Wolfcamp		Pool North Anderson Ranch		Dedicated Acreage: 80 Acres

1. Outline the acreage dedicated to the subject well by colored pencil or hachure marks on the plat below.
2. If more than one lease is dedicated to the well, outline each and identify the ownership thereof (both as to working interest and royalty).
3. If more than one lease of different ownership is dedicated to the well, have the interests of all owners been consolidated by communitization, unitization, force-pooling, etc?

☐ Yes ☐ No If answer is "yes," type of consolidation _____

If answer is "no," list the owners and tract descriptions which have actually been consolidated. (Use reverse side of this form if necessary.) _____

No allowable will be assigned to the well until all interests have been consolidated (by communitization, unitization, forced-pooling, or otherwise) or until a non-standard unit, eliminating such interests, has been approved by the Commission.



CERTIFICATION

I hereby certify that the information contained herein is true and complete to the best of my knowledge and belief.

Name

Dianne Sumrall

Position

Production Clerk

Company

H. L. Brown, Jr.

Date

August 14, 1992

I hereby certify that the well location shown on this plat was plotted from field notes of actual surveys made by me or under my supervision, and that the same is true and correct to the best of my knowledge and belief.

Date Surveyed

April 26, 1988

Registered Professional Engineer
and/or Land Surveyor

No. 8689

Certificate No.

6689