

# WRS COMPLETION REPORT

COMPLETIONS SEC 12 TWP 15S RGE 34E  
PI# 30-T-0013 03/03/86 30-025-29451-0000 PAGE 1

NMEX LEA \* 1870FSL 2080FWL SEC  
STATE COUNTY FOOTAGE SPT  
UNION OIL OF CALIF D DO  
OPERATOR WELL CLASS INT FIN  
2 REED  
WELL NO LEASE NAME  
4077KB 4063GR MORTON  
OPER ELEV FIELD POOL AREA  
API 30-025-29  
LEASE TYPE NO PERMIT OF WELL D

11/27/1985 01/14/1986 ROTARY  
SPUD DATE COME DATE TYPE TOOL  
10550 WOLFCAMP MCVAY DRLG 4 RIG SUB 15  
PRO. DEPTH PRO. FORM CONTRACTOR  
DTD 10450 PB 10445 FM/TD WOLFCAMP  
DRILLERS T.D. LOG T.D. PLUG BACK TO OLD T.D. FORM T.D.

## LOCATION DESCRIPTION

29 MI SE CAPROCK, NM

## CASING/LINER DATA

CSG 13 3/8 @ 406 W/	450 SACKS	01
CSG 8 5/8 @ 4616 W/	1900 SACKS	02
CSG 5 1/2 @ 10450 W/	1750 SACKS	03

## TUBING DATA

TBG 2 7/8 AT 10333

## INITIAL POTENTIAL

IPF 330BOPD 641.0MCFD 3BW 25/64CK  
WOLFCAMP PERF W/ 11/IT 10415-10420 004  
PERF 10415-10420  
TP 240  
GTY 44.0 GOR 1942  
FCP PKR  
NATURAL

TYPE	FORMATION LTH	TOP DEPTH/SUB	BSE DEPTH/SUB
LOG	RUSTLER	1832 2245	
LOG	YATES	2980 1097	
LOG	WOLFCAMP	9611 -5534	

CONTINUED IC# 300257051585

Copyrighted  
Reproduction  
Prohibited



Petroleum Information  
CORPORATION

P-WFS-GF  
Form No. 15

COMPLETIONS  
PI# 30-T-0013 03/03/86 SEC 12 TWP 15S RGE 34E  
30-025-29451-0000 PAGE 2

UNION OIL OF CALIF  
2 REED D DO

	LOGS AND SURVEYS /INTERVAL,TYPE/	
LOGS	GR	DLL
LOGS	CNL	LDT
		MSFL
		NGT

DRILLING PROGRESS DETAILS

UNION OIL OF CALIF  
BOX 671  
MIDLAND, TX 79702  
915-684-8231  
10/15 LOC/1985/  
12/05 DRLG 4585  
12/19 DRLG 9222  
12/23 DRLG 9820  
01/02 10450 TD, WOCT  
02/26 TD REACHED 12/24/85 RIG REL 12/24/85  
10450 TD, PB 10445  
COMP 1/14/86, IPF 330 BO, 641 MCFGPD, 3  
BWP, GTY 44, GOR 1942, FCP  
PKR, FTP 240, CK 25/64  
PROD ZONE - WOLFCAMP 10415-10420  
NO CORES OR DSTS RPTD

# NEW MEXICO OIL CONSERVATION COMMISSION WELL LOCATION AND ACREAGE DEDICATION PLAT

Form C-101  
Supersedes C-120  
Effective 1-4-85

All Distances must be from the outer boundaries of the Section.

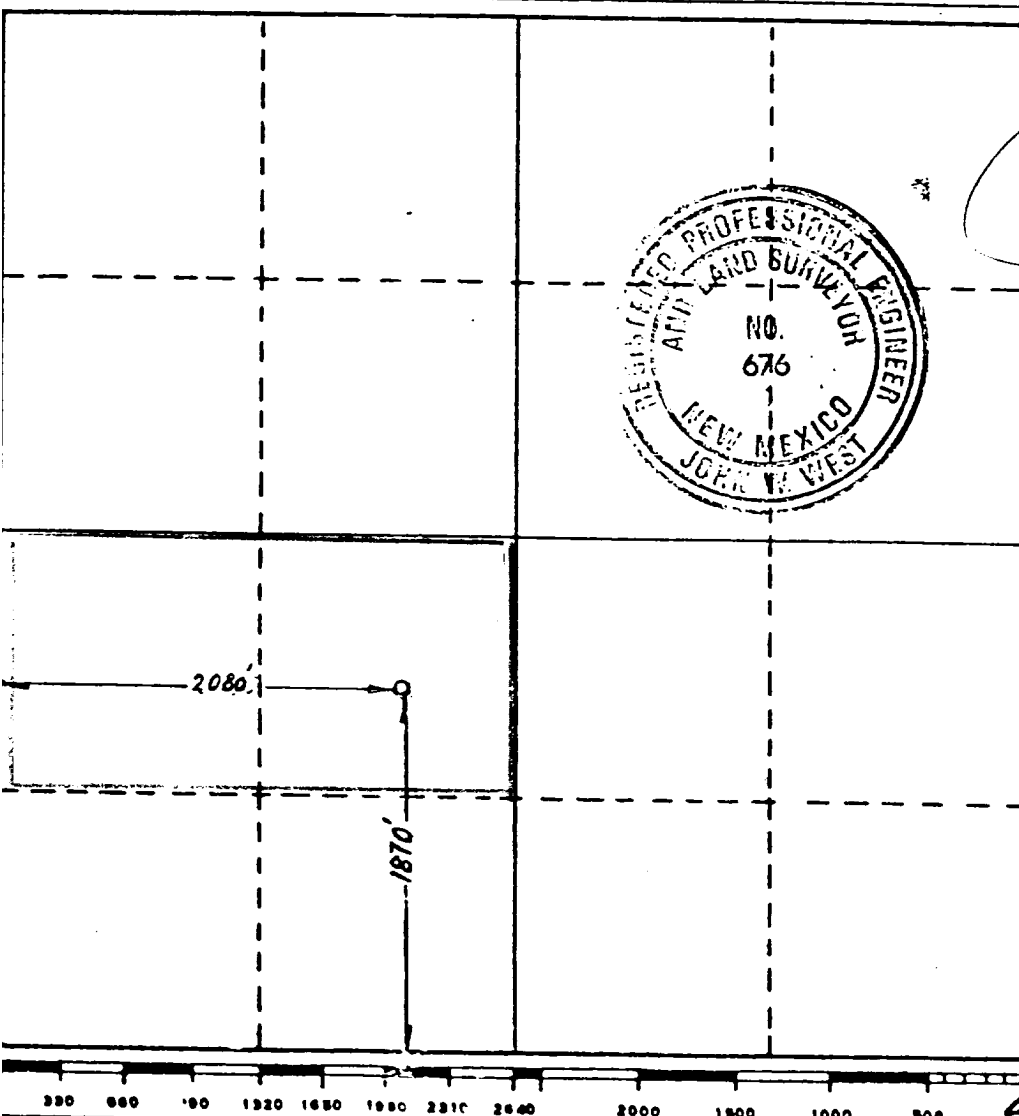
Operator <b>UNION OIL OF CALIFORNIA</b>			Lease <b>REED</b>		Well No. <b>2</b>
Init Letter <b>K</b>	Section <b>12</b>	Township <b>15 SOUTH</b>	Range <b>34 EAST</b>	County <b>LEA</b>	
Actual Footage Location of Well: <b>1870</b> feet from the <b>SOUTH</b> line and <b>2080</b> feet from the <b>WEST</b> line					
Ground Level Elev. <b>4063.0'</b>	Producing Formation <b>WOLFCAMP</b>		Pool <b>MORTON WOLFCAMP</b>		Dedicated Acreage: <b>80</b> Acres

1. Outline the acreage dedicated to the subject well by colored pencil or hachure marks on the plat below.
2. If more than one lease is dedicated to the well, outline each and identify the ownership thereof (both as to working interest and royalty).
3. If more than one lease of different ownership is dedicated to the well, have the interests of all owners been consolidated by communitization, unitization, force-pooling, etc?

☐ Yes ☐ No If answer is "yes," type of consolidation \_\_\_\_\_

If answer is "no," list the owners and tract descriptions which have actually been consolidated. (Use reverse side of this form if necessary.) \_\_\_\_\_

No allowable will be assigned to the well until all interests have been consolidated (by communitization, unitization, forced-pooling, or otherwise) or until a non-standard unit, eliminating such interests, has been approved by the Commission.



## CERTIFICATION

I hereby certify that the information contained herein is true and complete to the best of my knowledge and belief.

\_\_\_\_\_  
Name  
**J.R. Hughes**  
Position  
**District Drilling Supt.**  
Company  
**Union Oil Co. of California**  
Date  
**October 3, 1985**

I hereby certify that the well location shown on this plat was plotted from field notes of actual surveys made by me or under my supervision, and that the same is true and correct to the best of my knowledge and belief.

Date Surveyed  
**SEPTEMBER 12, 1985**

Registered Professional Engineer  
and/or Land Surveyor

\_\_\_\_\_  
Certificate No. **JOHN V. WEST, 676**  
**RONALD J. EIDSON 3230**

RECEIVED

JAN 20 1986

O.C.D.  
HOSBY OFFICE