

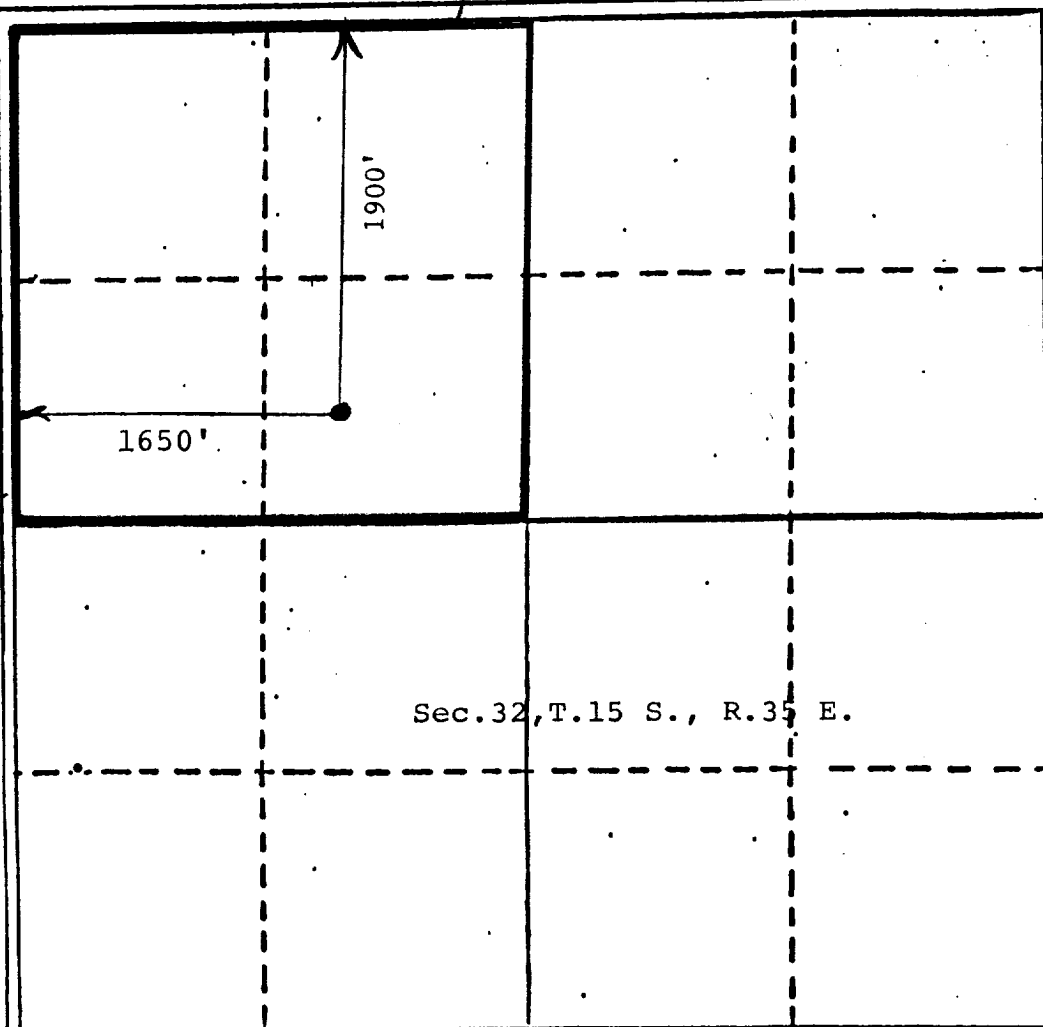
All distances must be from the outer boundaries of the Section.

Operator Mitchell Energy			Lease Baer			Well No. #1		
Unit Letter F	Section 32	Township 15 S	Range 35 E.	County Lea County				
Actual Postage Location of Well 1900 feet from the North line and 1650 feet from the FWL line								
Ground Level Elev. 4003	Producing Formation Strawn			Pool Wildcat			Dedicated Acreage 40 Acres	

1. Outline the acreage dedicated to the subject well by colored pencil or hatchure marks on the plat below.
2. If more than one lease is dedicated to the well, outline each and identify the ownership thereof (both as to working interest and royalty).
3. If more than one lease of different ownership is dedicated to the well, have the interests of all owners been consolidated by communitization, unitization, force-pooling, etc?
☐ Yes ☐ No If answer is "yes," type of consolidation _____

If answer is "no," list the owners and tract descriptions which have actually been consolidated. (Use reverse side of this form if necessary.) _____

No allowable will be assigned to the well until all interests have been consolidated (by communitization, unitization, forced-pooling, or otherwise) or until a non-standard unit, eliminating such interests, has been approved by the Division



CERTIFICATION

I hereby certify that the information contained herein is true and complete to the best of my knowledge and belief.

Bill G. Spencer *[Signature]*

Name
Sr. Reg. Affairs Coord.

Position
Mitchell Energy Corporation

Company
03-20-86

Date

I hereby certify that the well location shown on this plat was plotted from field notes of actual surveys made by me or under my supervision, and that the same is true and correct to the best of my knowledge and belief.

December 12, 1985

Date Surveyed

Registered Professional Engineer and/or Land Surveyor

John D. Jaques, P.E. & L.S.

Certificate No.

6290

330 660 990 1320 1650 1980 2310 2640 2970 3300 3630 3960 4290