

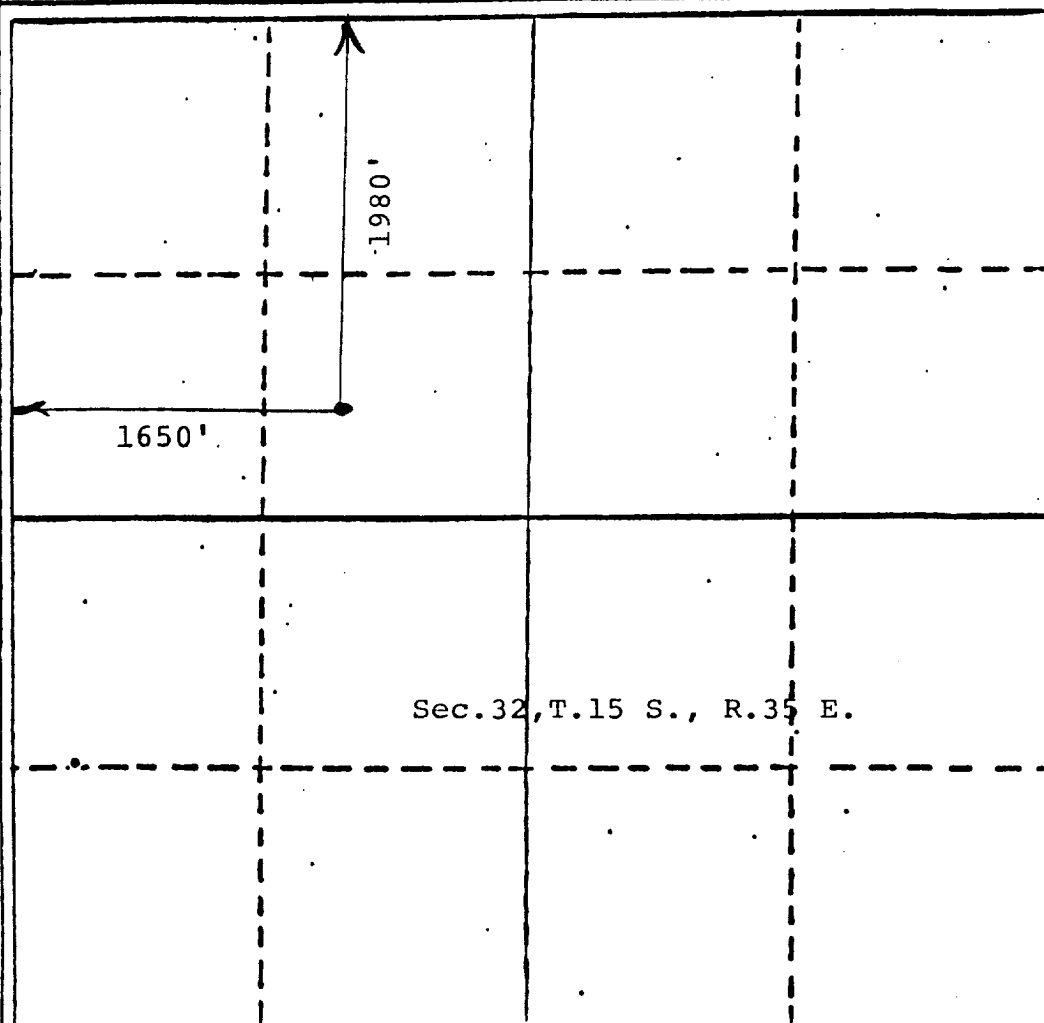
All distances must be from the outer boundaries of the section.

Operator Mitchell Energy		Lease Baer		Well No. #1
Unit Letter F	Section 32	Township 15 S	Range 35 E.	County Lea County
Actual Postage Location of Well				
1980 feet from the North line and		1650 feet from the FWL		line
Ground Level Elev. 4003	Producing Formation Shawn	Pool Hildaat	Dedicated Acreage 40	

1. Outline the acreage dedicated to the subject well by colored pencil or hatchure marks on the plat below.
 2. If more than one lease is dedicated to the well, outline each and identify the ownership thereof (both as to working interest and royalty).
 3. If more than one lease of different ownership is dedicated to the well, have the interests of all owners been consolidated by communitization, unitization, force-pooling, etc?
- ☒ Yes ☐ No If answer is "yes," type of consolidation Communitization (Joint Operating Agreement)

If answer is "no," list the owners and tract descriptions which have actually been consolidated. (Use reverse side of this form if necessary.)

No allowable will be assigned to the well until all interests have been consolidated (by communitization, unitization, forced-pooling, or otherwise) or until a non-standard unit, eliminating such interests, has been approved by the Division



CERTIFICATION

I hereby certify that the information contained herein is true and complete to the best of my knowledge and belief.

Lee G. Spencer

Name

Sr. Regulatory Affairs Coord

Position

Mitchell Energy Corporation

Company

December 20, 1985

Date

I hereby certify that the well location shown on this plat was plotted from field notes of actual surveys made by me or under my supervision, and that the same is true and correct to the best of my knowledge and belief.

December 12, 1985

Date Surveyed

NEW MEXICO

6290

Registered Professional Engineer and/or Land Surveyor

John D. Jaques, P.E. & L.S.

Certificate No. 6290

78/11/8 7th
5/22/86
8/22/86
78/11/8 7th
5/22/86
8/22/86
78/11/8 7th
5/22/86
8/22/86

RECEIVED
DEC 26 1985
C.C.D.
HONORS OFFICE