

**NEW MEXICO OIL CONSERVATION COMMISSION
WELL LOCATION AND ACREAGE DEDICATION PLAT**

Form C-102
Supersedes C-128
Effective 1-1-65

All distances must be from the outer boundaries of the Section

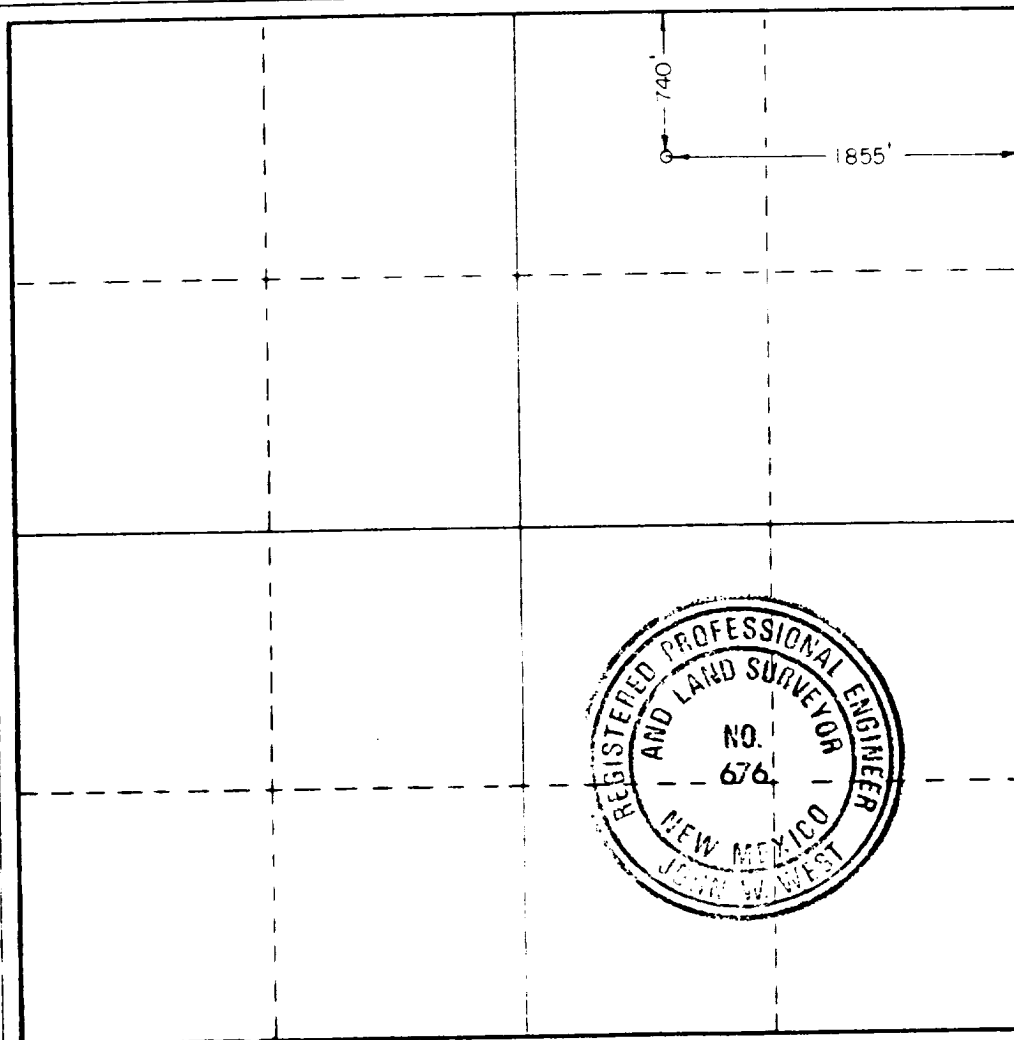
Operator AMERIND OIL COMPANY			Lease WATER "B" #1		Acres 1
Tract Letter B	Section 24	Township 14S	Range 2E	County DEA	
Actual Footage Location of Well 740 feet from the NORTH line and 1855 feet from the EAST line					
Ground Level Elev. 5539.4	Producing Formation Strawn		Pool Northeast Lovington Penn		Dedicated Acreage 80 Acres

1. Outline the acreage dedicated to the subject well by colored pencil or barbare marks on the plat below.
2. If more than one lease is dedicated to the well, outline each and identify the ownership thereof (both as to working interest and royalty).
3. If more than one lease of different ownership is dedicated to the well, have the interests of all owners been consolidated by communitization, unitization, force-pooling, etc?

☐ Yes ☐ No If answer is "yes," type of consolidation _____

If answer is "no," list the owners and tract descriptions which have actually been consolidated. (Use reverse side of this form if necessary.) _____

No allowable will be assigned to the well until all interests have been consolidated (by communitization, unitization, forced-pooling, or otherwise) or until a non-standard unit, eliminating such interests, has been approved by the Commission.



CERTIFICATION

I hereby certify that the information contained herein is true and complete to the best of my knowledge and belief.

Robert C. Leibrock

Name
Robert C. Leibrock

Position
Vice President

Company
Amerind Oil Co.

Date
June 17, 1986

I hereby certify that the well location shown on this plat was plotted from field notes of actual surveys made by me or under my supervision, and that the same is true and correct to the best of my knowledge and belief.

Date Surveyed

Registered Professional Engineer and/or Land Surveyor

John W. West

Certificate No. **JOHN W. WEST, 676**
RONALD J. EIDSON, 3239

Rec'd 8/25/86

13