

UNITED STATES
DEPARTMENT OF THE INTERIOR
GEOLOGICAL SURVEY

APPLICATION FOR PERMIT TO DRILL, DEEPEN, OR PLUG BACK

1a. TYPE OF WORK
DRILL ☒ DEEPEN ☐ PLUG BACK ☐
b. TYPE OF WELL
OIL WELL ☒ GAS WELL ☐ OTHER ☐ SINGLE ZONE ☒ MULTIPLE ZONE ☐

2. NAME OF OPERATOR
CONOCO INC.

3. ADDRESS OF OPERATOR
P. O. Box 460, Hobbs, N.M. 88240

4. LOCATION OF WELL (Report location clearly and in accordance with any State requirements.)*
At surface Unit E
1395' FNL & 1295' FNL
At proposed prod. zone same

14. DISTANCE IN MILES AND DIRECTION FROM NEAREST TOWN OR POST OFFICE*

15. DISTANCE FROM PROPOSED*
LOCATION TO NEAREST
PROPERTY OR LEASE LINE, FT.
(Also to nearest drilg. unit line, if any)

18. DISTANCE FROM PROPOSED LOCATION*
TO NEAREST WELL, DRILLING, COMPLETED,
OR APPLIED FOR, ON THIS LEASE, FT.

21. ELEVATIONS (Show whether DF, RT, GR, etc.)
3937' GL

23. PROPOSED CASING AND CEMENTING PROGRAM

SIZE OF HOLE	SIZE OF CASING	WEIGHT PER FOOT	SETTING DEPTH	QUANTITY OF CEMENT
17 1/2"	13 3/8"	54.5 #	600'	520 SXS class "C" - circ.
8 3/4"	7"	26 #	4150'	1350 SXS class "C", class "2" light and CO ₂ resistive cnt - circ.

It is proposed to drill a straight hole to 4150' and complete as a Grayburg/San Andres oil well. Attached is a location and acreage dedication plat, a proposed well Plan Outline, and a Surface Use Plan. An application for Non-Standard location has been filed with the NMOC in Santa Fe.

IN ABOVE SPACE DESCRIBE PROPOSED PROGRAM: If proposal is to deepen or plug back, give data on present productive zone and proposed new productive zone. If proposal is to drill or deepen directionally, give pertinent data on subsurface locations and measured and true vertical depths. Give blowout preventer program, if any.

24. SIGNED Wm. Bullock TITLE Administrative Supervisor DATE 1-19-87

(This space for Federal or State office use)

PERMIT NO. Orig: Sgd. Charles S. J. APPROVAL DATE

APPROVED BY Arco TITLE DATE 2.3.87

CONDITIONS OF APPROVAL, IF ANY:

Subject to
Like Approval
by State

*See Instructions On Reverse Side

BLM - Carlsbad (6) Arco (2) Ates (1) PLC (1) File

30-025-20853

5. LEASE DESIGNATION AND SERIAL NO.
LC-029410(A)
6. IF INDIAN, ALLOTTEE OR TRIBE NAME
7. UNIT AGREEMENT NAME
MCA
8. FARM OR LEASE NAME
MCA Unit
9. WELL NO.
369
10. FIELD AND POOL, OR WILDCAT
Maljamar 6/5A
11. SEC., T., R., M., OR BLK.
AND SURVEY OR AREA
Sec. 29-17S-32E
12. COUNTY OR PARISH
Lea
13. STATE
NM

22. APPROX. DATE WORK WILL START*
March 13, 1987

NEW MEXICO OIL CONSERVATION COMMISSION
WELL LOCATION AND ACREAGE DEDICATION PLAT

Form C-102
Supersedes C-128
Effective 1-1-65

All distances must be from the outer boundaries of the Section

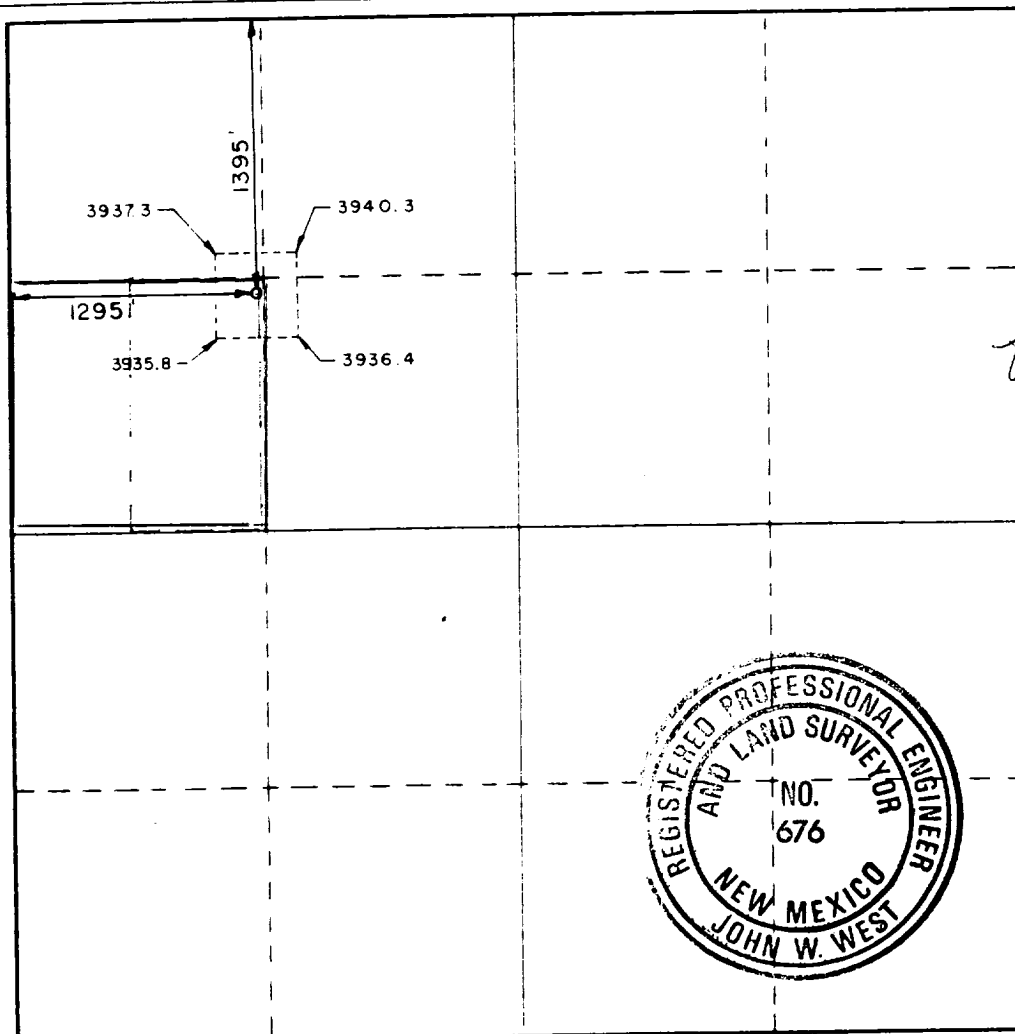
Operator CONOCO, INC.		Lease MCA UNIT		Well No. 369	
Unit Letter E	Section 29	Township 17-S	Range 32-E	County LEA	
Actual Footage Location of Well: 1395 feet from the NORTH line and 1295 feet from the WEST line					
Ground Level Elev. 3936.6	Producing Formation Grayburg/San Andres		Pool Mahamar Grayburg/San Andres	Dedicated Acreage: 4/8 20 Acres	

1. Outline the acreage dedicated to the subject well by colored pencil or hachure marks on the plat below.
2. If more than one lease is dedicated to the well, outline each and identify the ownership thereof (both as to working interest and royalty).
3. If more than one lease of different ownership is dedicated to the well, have the interests of all owners been consolidated by communitization, unitization, force-pooling, etc?

☒ Yes ☐ No If answer is "yes," type of consolidation unitization

If answer is "no," list the owners and tract descriptions which have actually been consolidated. (Use reverse side of this form if necessary.)

No allowable will be assigned to the well until all interests have been consolidated (by communitization, unitization, forced-pooling, or otherwise) or until a non-standard unit, eliminating such interests, has been approved by the Commission.



CERTIFICATION

I hereby certify that the information contained herein is true and complete to the best of my knowledge and belief.

Name John West
Position Administrative Supervisor
Company CONOCO, Inc.
Date 1-19-87

I hereby certify that the well location shown on this plat was plotted from field notes of actual surveys made by me or under my supervision, and that the same is true and correct to the best of my knowledge and belief.

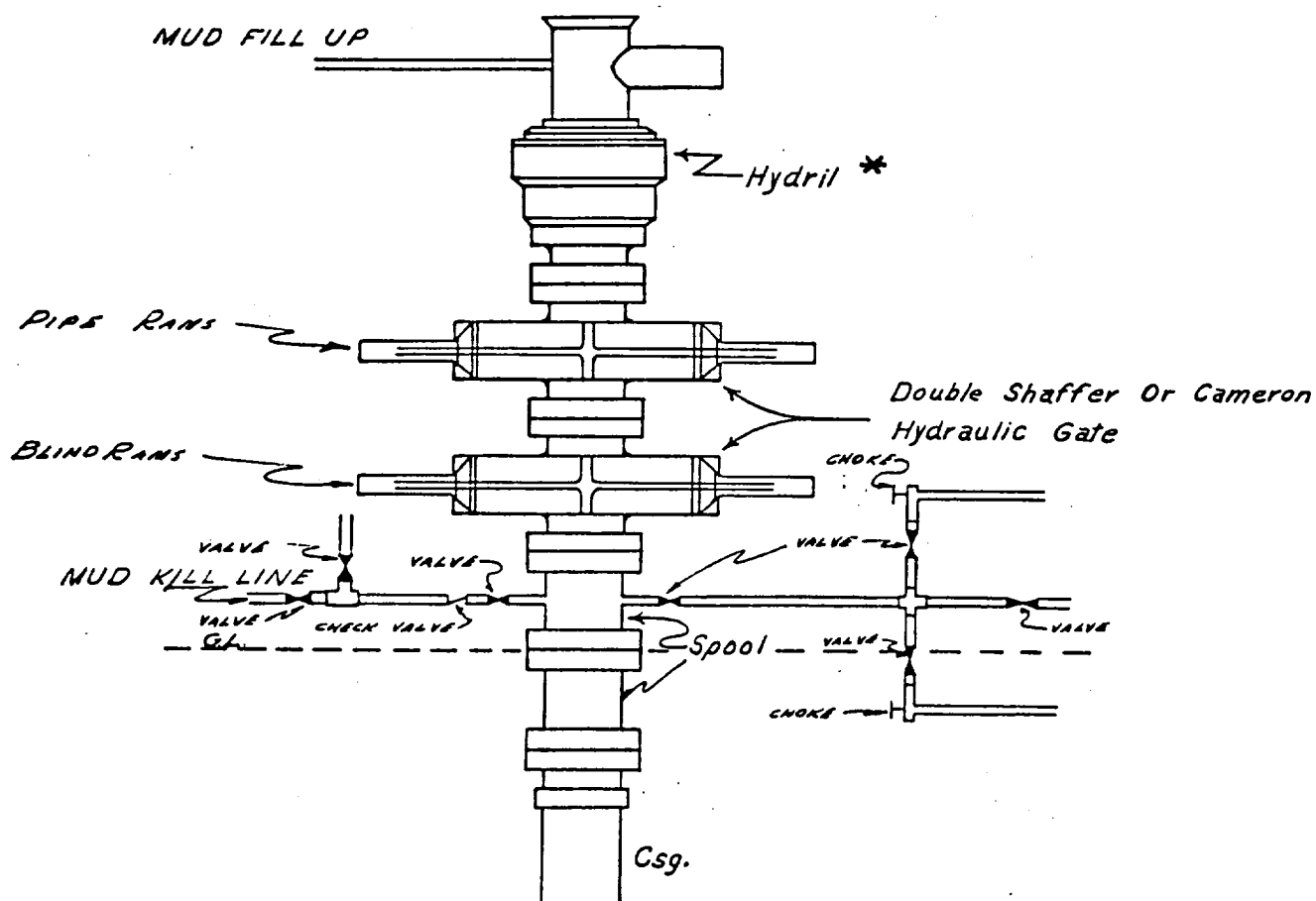
Date Surveyed
DECEMBER 3, 1986

Registered Professional Engineer and/or Land Surveyor

Certificate No. JOHN W. WEST, 676
RONALD J. EIDSON, 3239

CONOCO INC.

Blow-out Preventer Specifications



NOTE:

Manual and Hydraulic controls with closing unit no less than 75' from well head.
Remote controls on rig floor.

*

DUE TO SUBSTRUCTURE CLEARANCE, HYDRIL
MAY OR MAY NOT BE USED.

RECEIVED
FEB 4 1987
OCD
HOBBS OFFICE

7802 8-19-87