

NEW MEXICO OIL CONSERVATION COMMISSION
WELL LOCATION AND ACREAGE DEDICATION PLAT

Form C-102
Supersedes C-128
Effective 1-1-65

All distances must be from the outer boundaries of the Section

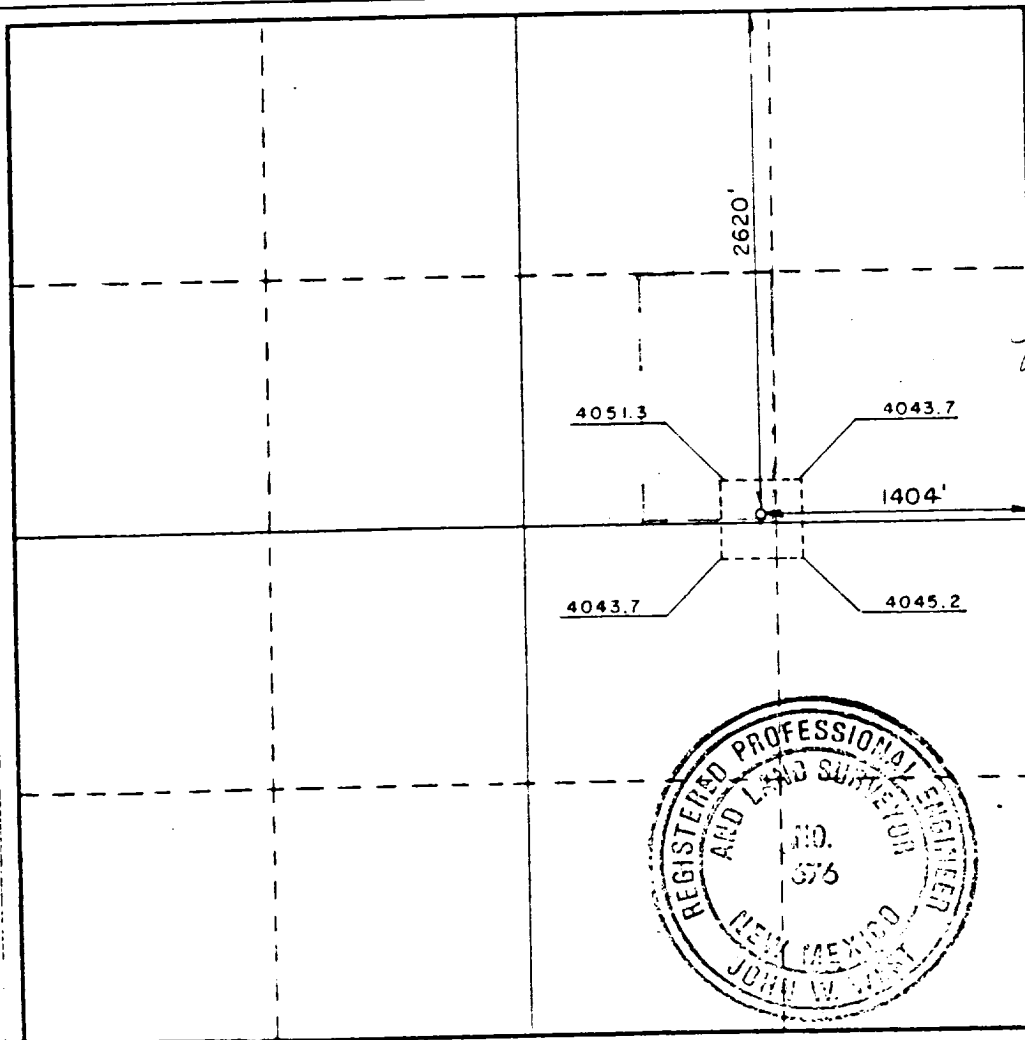
Operator CONOCO, INC		Lease MCA UNIT		Well No. 368
Unit Letter G	Section 21	Township 17-S	Range 32-E	County LEA
Actual Footage Location of Well: 2620 feet from the NORTH line and 1404 feet from the EAST line				
Ground Level Elev. 4047.7	Producing Formation Grayburg / San Andres	Pool Maljamar Grayburg / San Andres	Dedicated Acreage: 20 Acres	

1. Outline the acreage dedicated to the subject well by colored pencil or hatchure marks on the plat below.
2. If more than one lease is dedicated to the well, outline each and identify the ownership thereof (both as to working interest and royalty).
3. If more than one lease of different ownership is dedicated to the well, have the interests of all owners been consolidated by communitization, unitization, force-pooling, etc?

☒ Yes ☐ No If answer is "yes," type of consolidation unitization

If answer is "no," list the owners and tract descriptions which have actually been consolidated. (Use reverse side of this form if necessary.)

No allowable will be assigned to the well until all interests have been consolidated (by communitization, unitization, forced-pooling, or otherwise) or until a non-standard unit, eliminating such interests, has been approved by the Commission.



CERTIFICATION

I hereby certify that the information contained herein is true and complete to the best of my knowledge and belief.

Name Carl Bull
Position Administrative Supervisor
Company Conoco, Inc.

Date 1-19-87

I hereby certify that the well location shown on this plat was plotted from field notes of actual surveys made by me or under my supervision, and that the same is true and correct to the best of my knowledge and belief.

Date Surveyed
JANUARY 5, 1987

Registered Professional Engineer and/or Land Surveyor

John W. West

Certificate No. **JOHN W. WEST, 576**
RONALD J. EIDSON, 3239

330 660 990 1320 1650 1980 2310 2640 2000 1600 1000 500

RECEIVED

JUN 17 1987

OCD

HOBBS OFFICE