

DISTRICT I  
1625 N. French Dr., Hobbs, NM 88240

State of New Mexico  
Energy, Minerals and Natural Resources Department

Form C-101  
Revised March 17, 1999  
Instructions on back

DISTRICT II  
811 South First, Artesia, NM 88210

OIL CONSERVATION DIVISION

Submit to appropriate District Office

DISTRICT III  
1000 Rio Brazos Rd., Aztec, NM 87410

PO BOX 2088  
Santa Fe, NM 87504-2088

State Lease - 6 Copies  
Fee Lease - 5 Copies

DISTRICT IV  
2040 South Pacheco, Santa Fe, NM 87501

☐ AMENDED REPORT

APPLICATION FOR PERMIT TO DRILL, RE-ENTER, DEEPEN, PLUGBACK, OR ADD A ZONE

<sup>1</sup> Operator Name and Address Yates Petroleum Corporation 105 South Fourth Street Artesia, New Mexico 88210		<sup>2</sup> OGRID Number 025575
<sup>4</sup> Property Code 31998	<sup>5</sup> Property Name Otis State Unit	<sup>3</sup> API Number 30- 025-29073 29973
		<sup>6</sup> Well No. 1

<sup>7</sup> Surface Location

UL or lot no.	Section	Township	Range	Lot Idn	Feet from the	North/South Line	Feet from the	East/West Line	County
A	30	15S	34E		660	North	660	East	Lea

<sup>8</sup> Proposed Bottom Hole Location If Different From Surface

UL or lot no.	Section	Township	Range	Lot Idn	Feet from the	North/South Line	Feet from the	East/West Line	County
<sup>9</sup> Proposed Pool 1 Wildcat Mississippian					<sup>10</sup> Proposed Pool 2				

<sup>11</sup> Work Type Code E	<sup>12</sup> Well Type Code G	<sup>13</sup> Cable/Rotary R	<sup>14</sup> Lease Type Code S	<sup>15</sup> Ground Level Elevation 4121'
<sup>16</sup> Multiple No	<sup>17</sup> Proposed Depth 13900'	<sup>18</sup> Formation Mississippian	<sup>19</sup> Contractor Not Determined	<sup>20</sup> Spud Date ASAP

<sup>21</sup> Proposed Casing and Cement Program

Hole Size	Casing Size	Casing weight/feet	Setting Depth	Sacks of Cement	Estimated TOC
17 1/2"	13 3/8"	54.5#	451'-in place	975 sx	Circulated
11"	8 5/8"	32#	4549'-in place	2700 sx	Circulated
7 7/8"	5 1/2"	17# & 20#	13,900'	800 sx	TOC-10,000'

<sup>22</sup> Describe the proposed program. If this application is to DEEPEN or PLUG BACK give the data on the present productive zone and proposed new productivity. Describe the blowout prevention program, if any. Use additional sheets if necessary.

See Attached Sheet.

Point of Approval: 12/11/03  
Date Unless Stating Underway  
Re-entry

FEB 26 2003  
Hobbs  
OCD

23 I hereby certify that the information given above is true and complete to the best of

my knowledge and belief  
Signature:

Cliffon R. May

Printed name: Cliffon R. May

Title: Regulatory Agent

Date: 01/20/03

Phone: (505) 748-1471

OIL CONSERVATION DIVISION

ORIGINAL SIGNED BY

Approved by:

PAUL F. KAUTZ

PETROLEUM ENGINEER

Title:

Approval Date:

FEB 26 2003

Expiration Date:

Conditions of Approval  
Attached ☐

5  
C  
A

mlp

# **YATES PETROLEUM CORPORATION**

**Otis State Unit #1 Re-entry**

**660' FNL & 660' FEL**

**Section 30-T15S-R34E**

**Lea County, New Mexico**

**Lease VO-6291**

**Drilling Plans:** Yates Petroleum Corporation plans to re-enter this well bore that was originally drilled by Exxon Corporation as their New Mexico "FE" Sate No. 1, which was plugged in 1987. Yates will use a pulling unit and a reverse unit to drill out the cement plugs using a 7 7/8" bit in the 8 5/8" casing. At that point a drilling rig will be moved in and the plugs in the 7 7/8" open hole will be drilled out to the original TD of 12,693'. Then the well bore will be drilled deeper to a new TD of 13,900'. After reaching the new TD, a new suite of open hole logs will be ran. Yates will run 5 1/2" production casing to TD and will be cemented with approximately 800 sacks of cement to bring the cement top up to 10,000'+/-. The mud program to be used will be 9.2-9.5 ppg brine water with a 55-70 cp adjusted as needed for hole conditions. A 5000# BOPE will be installed on the 8 5/8" casing.

**The well will be completed using a pulling unit. The Morrow or Atoka formation will be the main target for completion.**

RECEIVED  
Hobbs  
OCD

DISTRICT I  
1888 N. French Dr., Hobbs, NM 88240

DISTRICT II  
811 South First, Artesia, NM 88210

DISTRICT III  
1600 Elia Brazos Rd., Aztec, NM 87410

DISTRICT IV  
2040 South Pacheco, Santa Fe, NM 87506

State of New Mexico  
Energy, Minerals and Natural Resources Department

Form C-102  
Revised March 17, 1999  
Instruction on back  
Submit to Appropriate District Office  
State Lease - 4 Copies  
Fee Lease - 3 Copies

OIL CONSERVATION DIVISION  
P.O. Box 2088  
Santa Fe, New Mexico 87504-2088

☐ AMENDED REPORT

WELL LOCATION AND ACREAGE DEDICATION PLAT

API Number 30-025-29973	Pool Code L	Pool Name Wildcat Mississippian
Property Code 31998	Property Name Otis State Unit	Well Number 1
OGED No. 025575	Operator Name Yates Petroleum Corporation	Elevation 4121'

Surface Location

UL or lot No. A	Section 30	Township 15S	Range 34E	Lot Idn	Feet from the 660	North/South line North	Feet from the 660	East/West line East	County Lea
--------------------	---------------	-----------------	--------------	---------	----------------------	---------------------------	----------------------	------------------------	---------------

Bottom Hole Location If Different From Surface

UL or lot No.	Section	Township	Range	Lot Idn	Feet from the	North/South line	Feet from the	East/West line	County
Dedicated Acres 320	Joint or Infill	Consolidation Code	Order No.						

NO ALLOWABLE WILL BE ASSIGNED TO THIS COMPLETION UNTIL ALL INTERESTS HAVE BEEN CONSOLIDATED  
OR A NON-STANDARD UNIT HAS BEEN APPROVED BY THE DIVISION

<div>V0-6291</div> <div>660'</div> <div>660'</div>				<b>OPERATOR CERTIFICATION</b> <i>I hereby certify that the information contained herein is true and complete to the best of my knowledge and belief.</i> <div>Clifton R. May</div> <div>Signature</div> <div>Clifton R. May</div> <div>Printed Name</div> <div>Regulatory Agent</div> <div>Title</div> <div>2/20/03</div> <div>Date</div>	
				<b>SURVEYOR CERTIFICATION</b> <i>I hereby certify that the well location shown on this plat was plotted from field notes of actual surveys made by me or under my supervision, and that the same is true and correct to the best of my belief.</i> <div>Refer to original plat</div> <div>Date Surveyed</div> <div>Signature &amp; Seal of Professional Surveyor</div> <div>Certificate No. Herschel L. Jones RLS 3640</div> <div>GENERAL SURVEYING COMPANY</div>	

## WELL LOCATION AND ACREAGE DEDICATION PLAT

State Lse. No. \_\_\_\_\_

Federal Lse. No. \_\_\_\_\_

All distances must be from the outer boundaries of the lease.

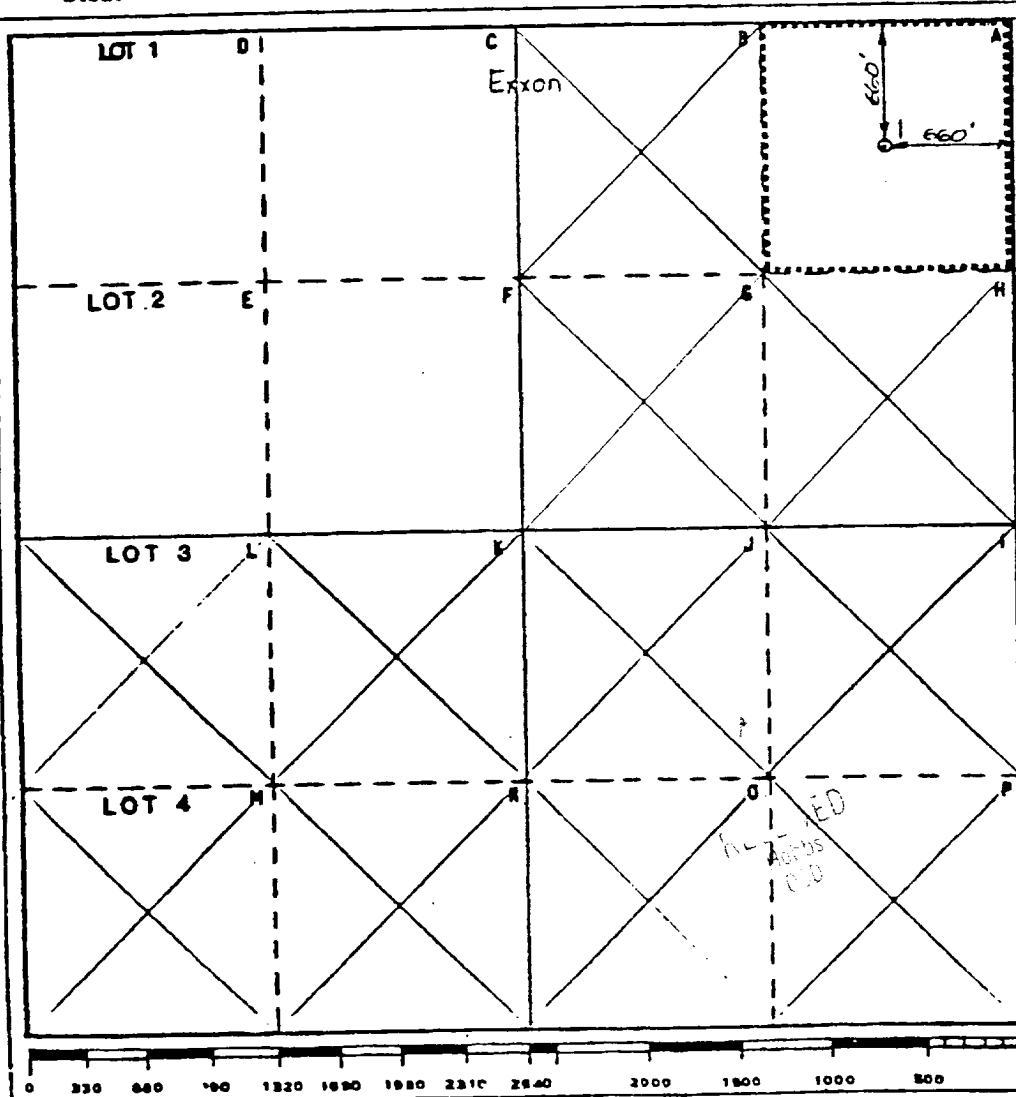
Operator <b>Exxon Corporation</b>			Lease <b>New Mexico FE State</b>		Well No. <b>1</b>
Unit Letter <b>A</b>	Section <b>30</b>	Township <b>15-S</b>	Range <b>34-E</b>	County <b>LEA</b>	
Actual Footage Location of Well: <b>660</b> feet from the <b>NORTH</b> line and <b>660</b> feet from the <b>EAST</b> line					
Ground Level Elev. <b>4121</b>	Producing Formation <b>STRAWN</b>	Pool <b>WILDCAT</b>	Dedicated Acreage: <b>40</b>		

1. Outline the acreage dedicated to the subject well by colored pencil or hatchure marks on the plat below.
2. If more than one lease is dedicated to the well, outline each and identify the ownership thereof (both as to working interest and royalty).
3. If more than one lease of different ownership is dedicated to the well, have the interests of all owners been consolidated by communitization, unitization, force-pooling, etc?

☐ Yes ☐ No If answer is "yes," type of consolidation \_\_\_\_\_

If answer is "no," list the owners and tract descriptions which have actually been consolidated. (Use reverse side of this form if necessary.) \_\_\_\_\_

No allowable will be assigned to the well until all interests have been consolidated (by communitization, unitization, forced-pooling, or otherwise) or until a non-standard unit, eliminating such interests, has been approved by the Commission.

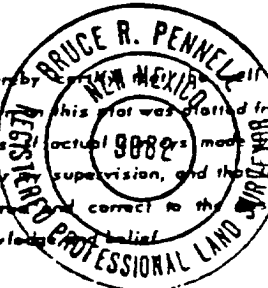


## CERTIFICATION

I hereby certify that the information contained herein is true and complete to the best of my knowledge and belief.

Name David A. M...  
Position Permits Supervisor  
Company Exxon Corporation  
Box 1600 Midland, Texas  
Date 7-2-87

I hereby certify that this plat was plotted from the records of actual surveys made under my supervision, and that the same is true and correct to the best of my knowledge and belief.



Date Surveyed 6-30-87  
Registered Professional Engineer and/or Land Surveyor

Bruce R. Pennell  
Certificate No. #9062

11.0 Miles W/NW of LOVINGTON, New Mexico

C.E. Sec. File No. WA-950

# YATES PETROLEUM CORPORATION

## TYPICAL 5,000 p.s.i. BLOWOUT PREVENTER & CHOKE MANIFOLD SCHEMATIC

