

**NEW MEXICO OIL CONSERVATION COMMISSION
WELL LOCATION AND ACREAGE DEDICATION PLAT**

Form C-102
Supersedes C-128
Effective 1-1-65

All distances must be from the outer boundaries of the Section.

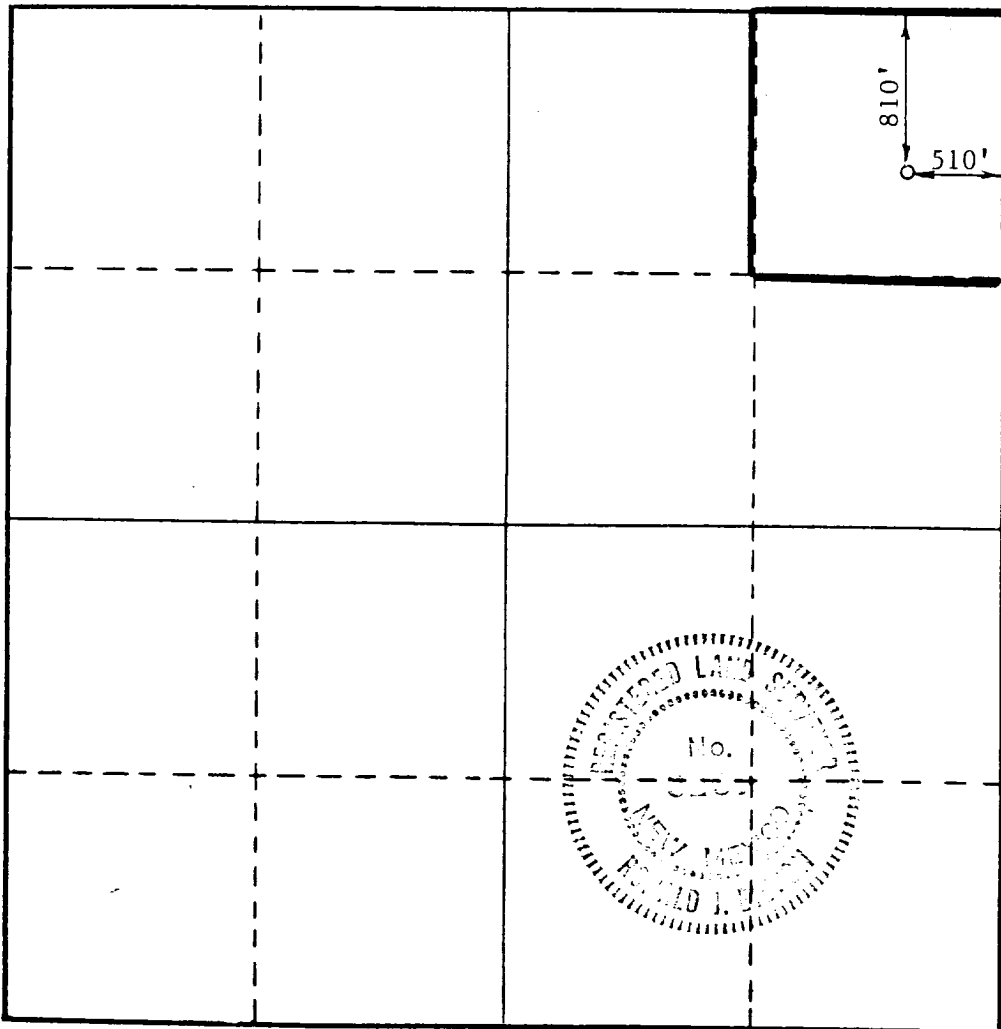
Operator Sun Exploration & Production Co.			Lease Arreguy 25		Well No. 1
Unit Letter A	Section 25	Township 15 South	Range 34 East	County Lea	
Actual Footage Location of Well: <div style="display: flex; justify-content: space-between; align-items: center;"> 810 feet from the North line and 510 feet from the East line </div>					
Ground Level Elev. 4035.5	Producing Formation Straw	Pool Wildcat	Dedicated Acreage: 40 Acres		

1. Outline the acreage dedicated to the subject well by colored pencil or hachure marks on the plat below.
2. If more than one lease is dedicated to the well, outline each and identify the ownership thereof (both as to working interest and royalty).
3. If more than one lease of different ownership is dedicated to the well, have the interests of all owners been consolidated by communitization, unitization, force-pooling, etc?

☐ Yes ☐ No If answer is "yes," type of consolidation _____

If answer is "no," list the owners and tract descriptions which have actually been consolidated. (Use reverse side of this form if necessary.) _____

No allowable will be assigned to the well until all interests have been consolidated (by communitization, unitization, forced-pooling, or otherwise) or until a non-standard unit, eliminating such interests, has been approved by the Commission.



CERTIFICATION

I hereby certify that the information contained herein is true and complete to the best of my knowledge and belief.

Maria L. Perez
Name
Maria L. Perez

Position
Accounting Associate

Company
Sun Expl. & Prod. Co.

Date
8-7-87

I hereby certify that the well location shown on this plat was plotted from field notes of actual surveys made by me or under my supervision, and that the same is true and correct to the best of my knowledge and belief.

Date Surveyed
August 5, 1987

Registered Professional Engineer
and/or Land Surveyor

Ronald J. Eidson
Certificate No. **JOHN W. WEST, 676**
RONALD J. EIDSON, 3239

RECEIVED
AUG 10 1997
OCD
HQB5 OFFICE

Rec'd 11-4-81

ELF

ABOVE DATE DOES NOT
INDICATE WHEN
CONFIDENTIAL LOGS
WILL BE RELEASED

ELF 8/14/01