

Submit to Appropriate
District Office
State Lease - 6 copies
Fee Lease - 5 copies

State of New Mexico
Energy, Minerals and Natural Resources Department

Form C-101
Revised 1-1-89

OIL CONSERVATION DIVISION

P.O. Box 2088
Santa Fe, New Mexico 87504-2088

DISTRICT I
P.O. Box 1980, Hobbs, NM 88240

DISTRICT II
P.O. Drawer DD, Artesia, NM 88210

DISTRICT III
1000 Rio Brazos Rd., Aztec, NM 87410

API NO. (assigned by OCD on New Wells)
30-025-30059

5. Indicate Type of Lease

STATE ☐

FEE ☒

6. State Oil & Gas Lease No.

APPLICATION FOR PERMIT TO DRILL, DEEPEN, OR PLUG BACK

1a. Type of Work:

DRILL ☐

RE-ENTER ☐

DEEPEN ☐

PLUG BACK ☒

b. Type of Well:

OIL
WELL ☒

GAS
WELL ☐

OTHER RECOMPLETION

SINGLE
ZONE ☐

MULTIPLE
ZONE ☐

7. Lease Name or Unit Agreement Name

Burton AER Com

2. Name of Operator

VATES PETROLEUM CORPORATION

8. Well No.

1

3. Address of Operator

105 South 4th St., Artesia, NM 88210

9. Pool name or Wildcat

Undes. Abo/San Andres

4. Well Location

Unit Letter J : 2400 Feet From The South Line and 1850 Feet From The East Line

Section 26

Township 16S

Range 37E

NMPM

Lea

County

10. Proposed Depth
11933'

11. Formation

Abo/San Andres

12. Rotary or C.T.

Pulling Unit

13. Elevations (Show whether DF, RT, GR, etc.)
3765.2' GR

14. Kind & Status Plug. Bond
Blanket

15. Drilling Contractor

-

16. Approx. Date Work will start
When approved

17.

PROPOSED CASING AND CEMENT PROGRAM

SIZE OF HOLE	SIZE OF CASING	WEIGHT PER FOOT	SETTING DEPTH	SACKS OF CEMENT	EST. TOP
17 1/2"	13-3/8"	54.5#	458'	450 sx (in place)	
11"	8-5/8"	32#	4300'	1900 sx (in place)	
7-7/8"	5 1/2"	17#, 20#	11933'	860 sx (in place)	

Propose to abandon Strawn perforations 11543-11575'. Will test Abo 8786-8820'. If unsuccessful, will test San Andres 4968-4974'. Will plug well if no commercial production established. Will set CIBP at 11525' and cap w/35' cement. Perforate 8786-8820' and treat w/2000 gals 20% NEFE HCL acid. Swab/flow test. If Abo is non-productive, run freepoint (TOC 8650') and shoot casing off 50' above freepoint. If freepoint is higher than 8600' or so, set CIBP + 35' cement @ 8750' before shooting casing off. RIH to bottom perf @ 9820' and spot cement plug 8820' to 50' above 5 1/2" casing stub (approx 60 sx). Tag plug. Spot 50 sx cement plug across T. of Glorieta 6440-6340'. Tag plug. Spot 40 sx cement plug 5300-5200'. Set re-tainer 5050' and establish injection rate 4-5 BPM down tubing and up 5 1/2" annulus; cement 5 1/2" casing with 325 sx PL and Class C Neat. Perforate the San Andres 4968-4974' and treat. Swab/flow test well.

If decision is made to abandon well, see page 2.

IN ABOVE SPACE DESCRIBE PROPOSED PROGRAM: IF PROPOSAL IS TO DEEPEN OR PLUG BACK, GIVE DATA ON PRESENT PRODUCTIVE ZONE AND PROPOSED NEW PRODUCTIVE ZONE. GIVE BLOWOUT PREVENTER PROGRAM, IF ANY.

I hereby certify that the information above is true and complete to the best of my knowledge and belief.

SIGNATURE

TITLE Production Supervisor

DATE 11-26-91

TYPE OR PRINT NAME

Juanita Goodlett

TELEPHONE NO. 505/748-1471

(This space for State Use)

Original
Paul Hantz
Geologist

APPROVED BY

TITLE

DATE

CONDITIONS OF APPROVAL, IF ANY:

Submit 3 Copies
to Appropriate
District Office

State of New Mexico
Energy, Minerals and Natural Resources Department

Form C-103
Revised 1-1-89

DISTRICT I
P.O. Box 1980, Hobbs, NM 88240

DISTRICT II
P.O. Drawer DD, Artesia, NM 88210

DISTRICT III
1000 Rio Brazos Rd., Aztec, NM 87410

OIL CONSERVATION DIVISION
P.O. Box 2088
Santa Fe, New Mexico 87504-2088

WELL API NO.
30-025-30059

5. Indicate Type of Lease
STATE ☐ FEE ☒

6. State Oil & Gas Lease No.

SUNDRY NOTICES AND REPORTS ON WELLS
(DO NOT USE THIS FORM FOR PROPOSALS TO DRILL OR TO DEEPEN OR PLUG BACK TO A
DIFFERENT RESERVOIR. USE "APPLICATION FOR PERMIT"
(FORM C-101) FOR SUCH PROPOSALS.)

7. Lease Name or Unit Agreement Name

Burton AER Com

1. Type of Well:
OIL WELL ☐ GAS WELL ☐ OTHER ☐ P&A

2. Name of Operator
YATES PETROLEUM CORPORATION

8. Well No.
1

3. Address of Operator
105 South 4th St., Artesia, NM 88210

9. Pool name or Wildcat
Undes. Abo/San Andres

4. Well Location
Unit Letter J : 2400 Feet From The South Line and 1850 Feet From The East Line
Section 26 Township 16S Range 37E NMMPM Lea County

10. Elevation (Show whether DF, RK3, RT, GR, etc.)
3765.2' GR

11.

Check Appropriate Box to Indicate Nature of Notice, Report, or Other Data
NOTICE OF INTENTION TO:

PERFORM REMEDIAL WORK ☐
TEMPORARILY ABANDON ☐
PULL OR ALTER CASING ☐

PLUG AND ABANDON ☒
CHANGE PLANS ☐

REMEDIAL WORK ☐
COMMENCE DRILLING OPNS. ☐
CASING TEST AND CEMENT JOB ☐

ALTERING CASING ☐
PLUG AND ABANDONMENT ☐

OTHER: ☐

OTHER: ☐

12. Describe Proposed or Completed Operations (Clearly state all pertinent details, and give pertinent dates, including estimated date of starting any proposed work) SEE RULE 1103.

Page 2- Plug and abandonment procedure if well is uneconomical in Abo/San Andres recompletion attempt.

1. Notify NMOCD, Hobbs, NM, 24 hrs in advance to witness abandonment.
2. Set CIBP + 35' cement at 4950'. Shoot casing off 50' above freepoint and pull.
3. Spot 25 sx cement plug from 4350-4225'.
4. Spot 30 sx cement plug from 2100-2000'.
5. Spot 30 sx cement plug from 510-410' to cover 13-3/8" casing shoe.
6. Spot 10 sx cement surface plug from 39'-surface.

I hereby certify that the information above is true and complete to the best of my knowledge and belief.

SIGNATURE Juanita Goodlett TITLE Production Supervisor DATE 11-26-91

TYPE OR PRINT NAME Juanita Goodlett TELEPHONE NO. 505/748-1471

(This space for State Use)

APPROVED BY _____ TITLE _____ DATE _____

CONDITIONS OF APPROVAL, IF ANY:

Submit to Appropriate
District Office
State Lease - 4 copies
Fee Lease - 3 copies

State of New Mexico
Energy, Minerals and Natural Resources Department

Form C-102
Revised 1-1-89

OIL CONSERVATION DIVISION
P.O. Box 2088
Santa Fe, New Mexico 87504-2088

DISTRICT I
P.O. Box 1980, Hobbs, NM 88240

DISTRICT II
P.O. Drawer DD, Artesia, NM 88210

DISTRICT III
1000 Rio Brazos Rd., Aztec, NM 87410

WELL LOCATION AND ACREAGE DEDICATION PLAT

All Distances must be from the outer boundaries of the section

Operator YATES PETROLEUM CORPORATION			Lease Burton AER Com		Well No. 1
Unit Letter J	Section 26	Township 16S	Range 37E	County NMPM	Lea
Actual Footage Location of Well: 2400 feet from the South line and 1850 feet from the East line					
Ground level Elev. 3765.2	Producing Formation Abo/San Andres		Pool Undesignated		Dedicated Acreage: 40 Acres

1. Outline the acreage dedicated to the subject well by colored pencil or hatchure marks on the plat below.

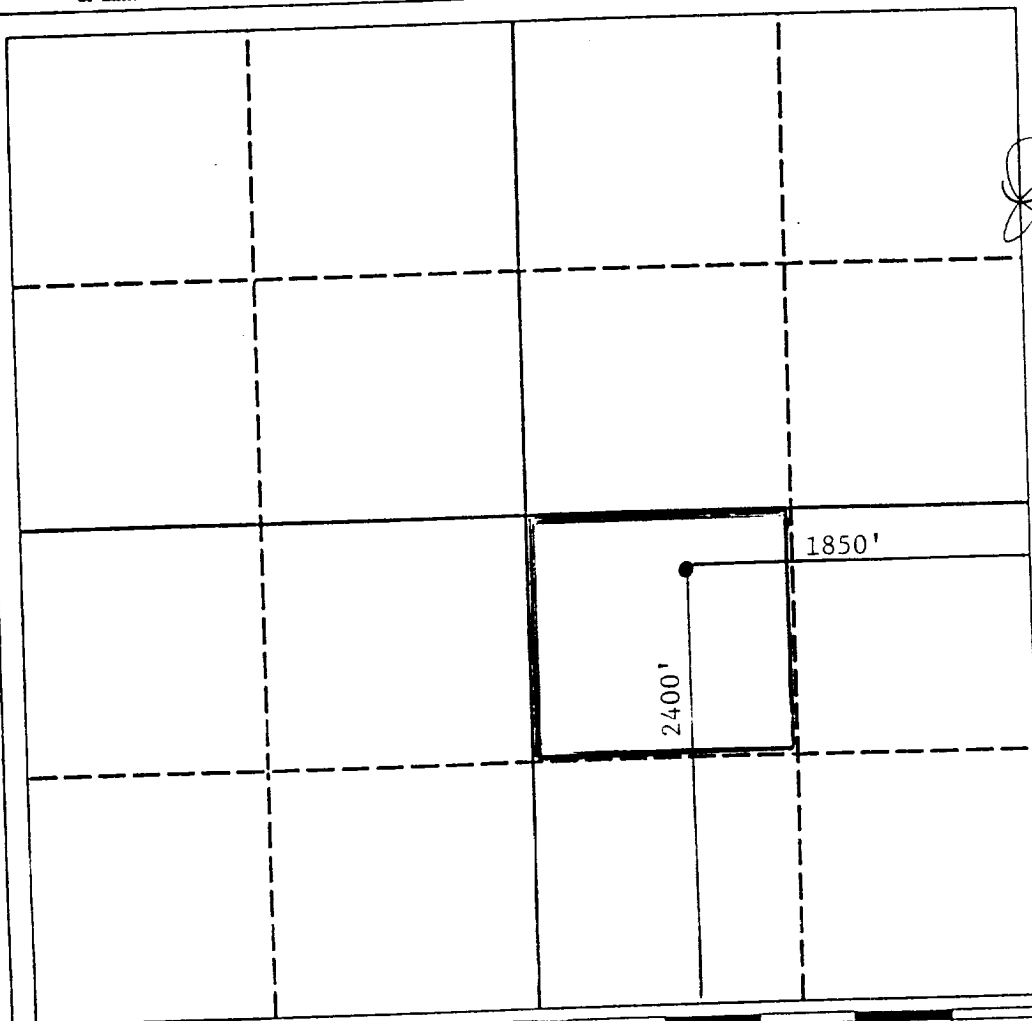
2. If more than one lease is dedicated to the well, outline each and identify the ownership thereof (both as to working interest and royalty).

3. If more than one lease of different ownership is dedicated to the well, have the interest of all owners been consolidated by communitization, unitization, force-pooling, etc.?

☐ Yes ☐ No If answer is "yes" type of consolidation _____

If answer is "no" list the owners and tract descriptions which have actually been consolidated. (Use reverse side of this form if necessary.) _____

No allowable will be assigned to the well until all interests have been consolidated (by communitization, unitization, forced-pooling, or otherwise) or until a non-standard unit, eliminating such interest, has been approved by the Division.



OPERATOR CERTIFICATION

I hereby certify that the information contained herein is true and complete to the best of my knowledge and belief.

Signature

Printed Name

JUANITA GOODLETT

Position

PRODUCTION SUPERVISOR

Company

YATES PETROLEUM CORPORATION

Date

11-26-91

SURVEYOR CERTIFICATION

I hereby certify that the well location shown on this plat was plotted from field notes of actual surveys made by me or under my supervision, and that the same is true and correct to the best of my knowledge and belief.

Date Surveyed

Refer to original plat

Signature & Seal of dated 9/23/87
Professional Surveyor

Certificate No.

0 330 660 990 1320 1650 1980 2310 2640 2000 1500 1000 500 0