

STATE OF NEW MEXICO
ENERGY AND MINERALS DEPARTMENT

C CONSERVATION DIVISION

P. O. BOX 2088
SANTA FE, NEW MEXICO 87501

Form C-101
Revised 10-1-78

NO. OF COPIES RECEIVED	
DISTRIBUTION	
SANTA FE	
FILE	
U.S.G.S.	
LAND OFFICE	
OPERATOR	

5A. Indicate Type of Lease

STATE ☐ FEE ☒

5. State Oil & Gas Lease No.

APPLICATION FOR PERMIT TO DRILL, DEEPEN, OR PLUG BACK

1a. Type of Work

DRILL ☒

DEEPEN ☐

PLUG BACK ☐

b. Type of Well

OIL WELL ☒

GAS WELL ☐

OTHER

SINGLE ZONE ☐

MULTIPLE ZONE ☐

2. Name of Operator

Amerind Oil Co.

3. Address of Operator

500 Wilco Bldg., Midland, TX 79701

4. Location of Well

UNIT LETTER L LOCATED 2130 FEET FROM THE South LINE

AND 660 FEET FROM THE West LINE OF SEC. 27 TWP. 16S RGE. 37E NMPM

7. Unit Agreement Name

8. Farm or Lease Name

Latham

9. Well No.

1

10. Field and Pool, or Wildcat

N.E. Lovington Penn

12. County

Lea

19. Proposed Depth

11,750'

19A. Formation

Strawn

20. Rotary or C.T.

Rotary

21. Elevations (Show whether DF, KT, etc.)

3783' GL, 3797' KB

21A. Kind & Status Plug. Bond

Blanket

21B. Drilling Contractor

McVay Drilling Company

22. Approx. Date Work will start

October 10, 1987

23.

PROPOSED CASING AND CEMENT PROGRAM

SIZE OF HOLE	SIZE OF CASING	WEIGHT PER FOOT	SETTING DEPTH	SACKS OF CEMENT	EST. TOP
17-1/2"	13-3/8"	61#	400'	400 sx C1s "C"	Surface
11"	8-5/8"	24 & 32#	4200'	1500 sx C1s "C"	Surface
7-7/8"	5-1/2"	17 & 20#	11,750'	350 sx C1s "H"	10,750'

IN ABOVE SPACE DESCRIBE PROPOSED PROGRAM: IF PROPOSAL IS TO DEEPEN OR PLUG BACK, GIVE DATA ON PRESENT PRODUCTIVE ZONE AND PROPOSED NEW PRODUCTIVE ZONE. GIVE BLOWOUT PREVENTER PROGRAM, IF ANY.

I hereby certify that the information above is true and complete to the best of my knowledge and belief.

Signed Robert C. Leibrock Title Vice President Date September 30, 1987

(This space for State Use)

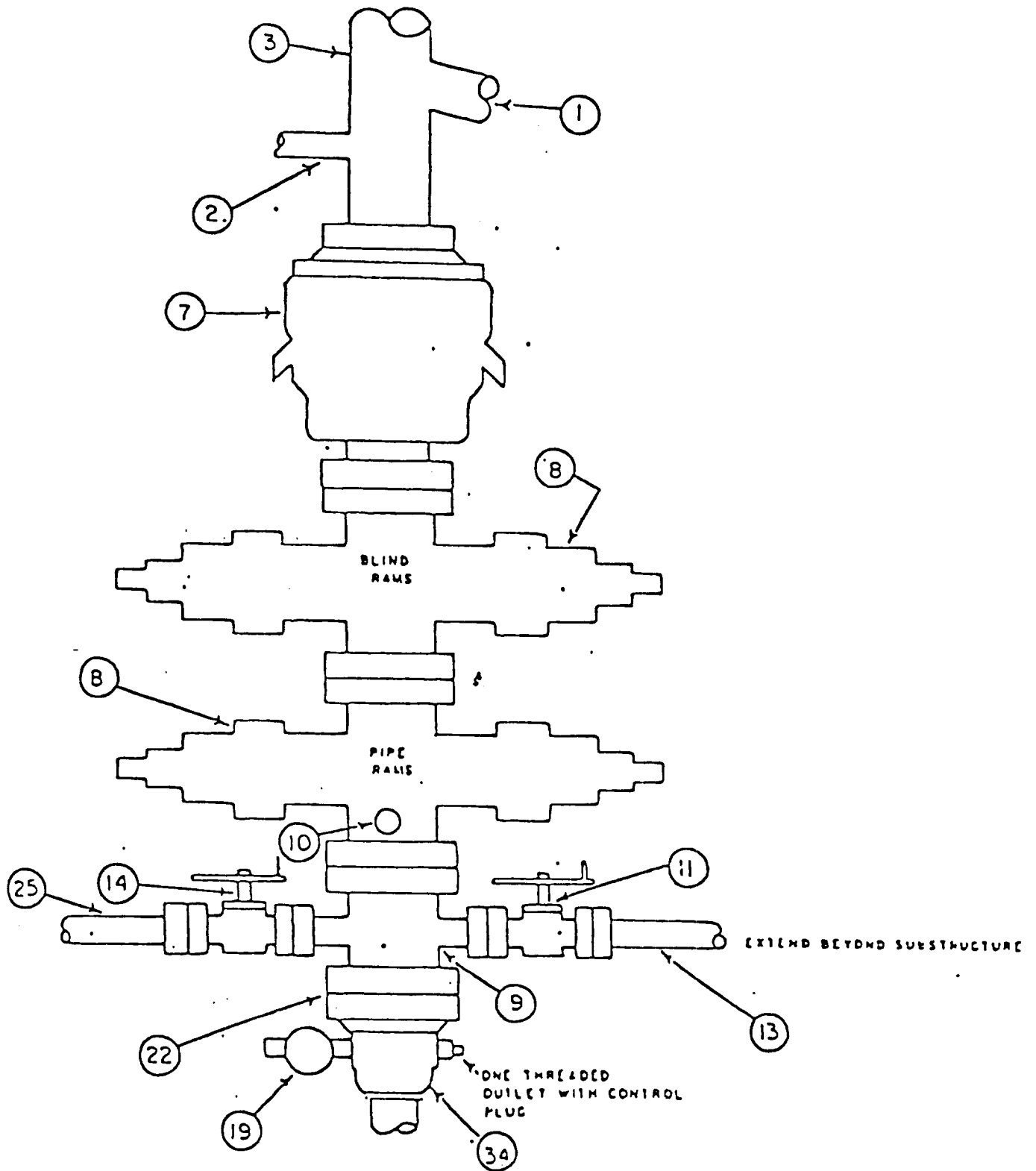
Orig. Signed by
Paul Kautz

APPROVED BY Geologist TITLE DATE OCT 2 1987

CONDITIONS OF APPROVAL, IF ANY:

Permit Expires 6 Months From Approval
Date Unless Drilling Underway.

3000 PSI



RECEIVED
OCT 1 1987
OCD
HOBBS OFFICE

3000 PSI

