

CO. OF COPIES REQUIRED	
DISTRIBUTION	
SANTA FE	
FILE	
U.S.G.S.	
LAND OFFICE	
OPERATOR	

P. O. BOX 2088

SANTA FE, NEW MEXICO 87501

3A. Indicate Type of Lease

STATE ☒ REC ☐

3. State Oil &amp; Gas Lease No.

## APPLICATION FOR PERMIT TO DRILL, DEEPEN, OR PLUG BACK

a. Type of Work

DRILL ☒DEEPEN ☐PLUG BACK ☐

b. Type of Well

OIL WELL ☒GAS WELL ☐

OTHER

SINGLE ZONE ☒MULTIPLE ZONE ☐

c. Name of Operator

Texaco Producing Inc.

d. Address of Operator

P. O. Box 728, Hobbs, New Mexico 88240

e. Location of Well

UNIT LETTER J LOCATED 1700 FEET FROM THE South LINE

NO 1980 FEET FROM THE East LINE OF SEC. 32 TWP. 16-S REC. 37-E

7. Unit Agreement Name

8. Form or Lease Name

State P

9. Well No.

13

10. Field and Pool, or Wildcat

Lovington Penn East

12. County

Lea

19. Proposed Depth

11,350'

19A. Formation

Strawn Limestone

20. Rotary or C.T.

Rotary

1. Elevations (Show whether DT, KT, etc.)

3792 GR

21A. Kind &amp; Status Plug. Bond

Blanket

21B. Drilling Contractor

22. Approx. Date Work will start

October 20, 1987

3.

## PROPOSED CASING AND CEMENT PROGRAM

SIZE OF HOLE	SIZE OF CASING	WEIGHT PER FOOT	SETTING DEPTH	SACKS OF CEMENT	EST. TOP
24"	20"	94#	40'	Redimix	Surface
17-1/2"	13-3/8"	48#	450'	550	Circulate
12-1/4"	8-5/8"	32#	4400'	2050	Circulate
7-7/8"	5-1/2"	17#	11,350'	2300	Circulate

## CEMENTING PROGRAM

SURFACE CASING: 550 sacks Class "H", 2% Cacl & 1/4# Flocele (15.6 ppg, 1.18 cu. ft./sx.).

INTERMEDIATE CASING: 1800 sacks Class "H" Light Weight w/15# Salt, 1/4# Flocele, (12.7 ppg, 2.10 cu. ft./sx.) followed with 250 sacks Class "H", 2% Cacl, 1/4# Flocele (15.6 ppg, 1.18 cu. ft./sx.).

PRODUCTION CASING: 1st Stage: 700 sacks Class "H" Light Weight w/1/4# Flocele, (12.3 ppg, 1.84 cu. ft./sx.) followed w/250 sacks 50/50 Poz "H" & 1/4# Flocele, .8% Halad 9 (13.6 ppg, 1.40 cu. ft. sx.).

Continued on Page 2

All other wells in this 1/4, 1/4 Section are operated by Texaco Producing Inc.

ABOVE SPACE DESCRIBE PROPOSED PROGRAM IF PROPOSAL IS TO DEEPEN OR PLUG BACK, GIVE DATA ON PRESENT PRODUCTIVE ZONE AND PROPOSED NEW PRODUCTION ZONE. GIVE BLOWOUT PREVENTER PROGRAM, IF ANY.

I hereby certify that the information above is true and complete to the best of my knowledge and belief.

L. J. Seeman

Signed L. J. Seeman Title District Petroleum Engineer Date 10/01/87

(This space for State Use)

Eddie W. Seay

APPROVED BY Oil & Gas Inspector

TITLE

DATE

OCT 5 1987

CONDITIONS OF APPROVAL, IF ANY:

Permit Expires 6 Months From Approval  
Date Unless Drilling Underway.

STATE "P" WELL NO. 13  
LOVINGTON PENN, EAST  
LEA COUNTY, NEW MEXICO

Continuation to Form C-101

PRODUCTION CASING: (Continued)

2nd Stage: 1100 sacks Class "H" Light Weight, 1/4# Flocele  
(12.3 ppg, 1.84 cu. ft./sx.) followed w/250 sacks  
50/50 Poz "H" w/1/4# Flocele (13.6 ppg, 1.40 cu.  
ft./sx.). (DV Tool @ 8400').

All distances must be from the outer boundaries of the Section.

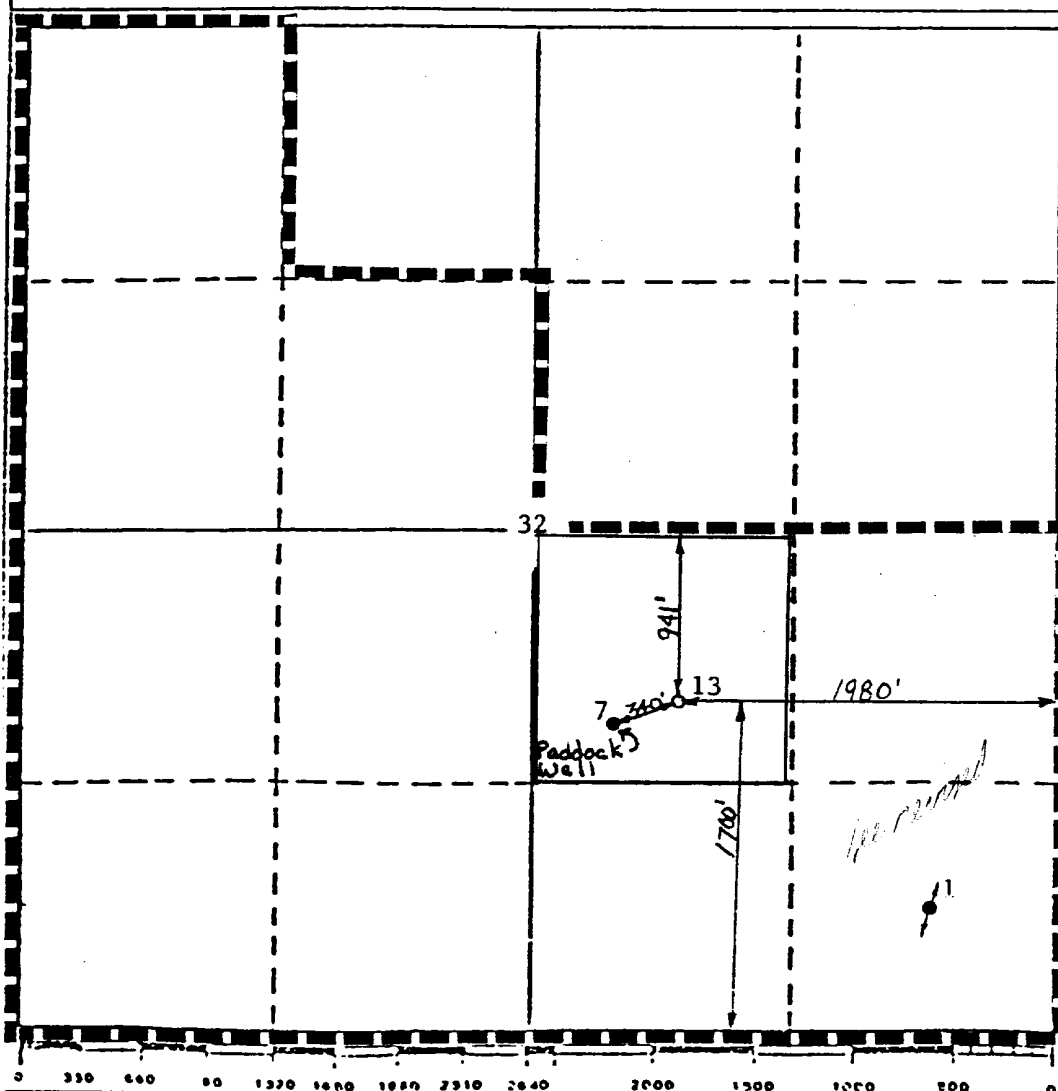
Operator <b>TEXACO PRODUCING INC.</b>			Lease <b>STATE "P"</b>		Well No. <b>13</b>
Unit Letter <b>J</b>	Section <b>32</b>	Township <b>T-16-S</b>	Range <b>R-37-E</b>	County <b>LEA</b>	
Actual Footage Location of Well: <b>1700</b> feet from the <b>SOUTH</b> line and <b>1980</b> feet from the <b>EAST</b> line					
Ground Level Elev. <b>3792'</b>	Producing Formation <b>STRAWN LIMESTONE</b>		Pool <b>Lovington Penn, East</b>		Dedicated Acreage: <b>40</b> Acres

1. Outline the acreage dedicated to the subject well by colored pencil or hatchure marks on the plat below.
2. If more than one lease is dedicated to the well, outline each and identify the ownership thereof (both as to working interest and royalty).
3. If more than one lease of different ownership is dedicated to the well, have the interests of all owners been consolidated by communitization, unitization, force-pooling, etc?

☐ Yes ☐ No If answer is "yes," type of consolidation \_\_\_\_\_

If answer is "no," list the owners and tract descriptions which have actually been consolidated. (Use reverse side of this form if necessary.) \_\_\_\_\_

No allowable will be assigned to the well until all interests have been consolidated (by communitization, unitization, forced-pooling, or otherwise) or until a non-standard unit, eliminating such interests, has been approved by the Division.



CERTIFICATION

I hereby certify that the information contained herein is true and complete to the best of my knowledge and belief.

*B. L. Eiland*  
Name

B.L. Eiland

Position

Division Surveyor

Company

Texaco Producing Inc.

Date

September 24, 1987

I hereby certify that the well location shown on this plat was plotted from field notes of actual surveys made by me or under my supervision, and that the same is true and correct to the best of my knowledge and belief.

Date Registered

NEW MEXICO  
September 24, 1987

Registered Professional Engineer and Land Surveyor

*B. L. Eiland*  
B. L. Eiland

Certificate No.

4386

NOV 9 1987  
OCD  
HQBRS OFFICE

RECEIVED

88-60-9 8321

173