

NEW MEXICO OIL CONSERVATION COMMISSION
WELL LOCATION AND ACREAGE DEDICATION PLAT

Form C-102
Supersedes C-128
Effective 1-1-65

All distances must be from the outer boundaries of the Section.

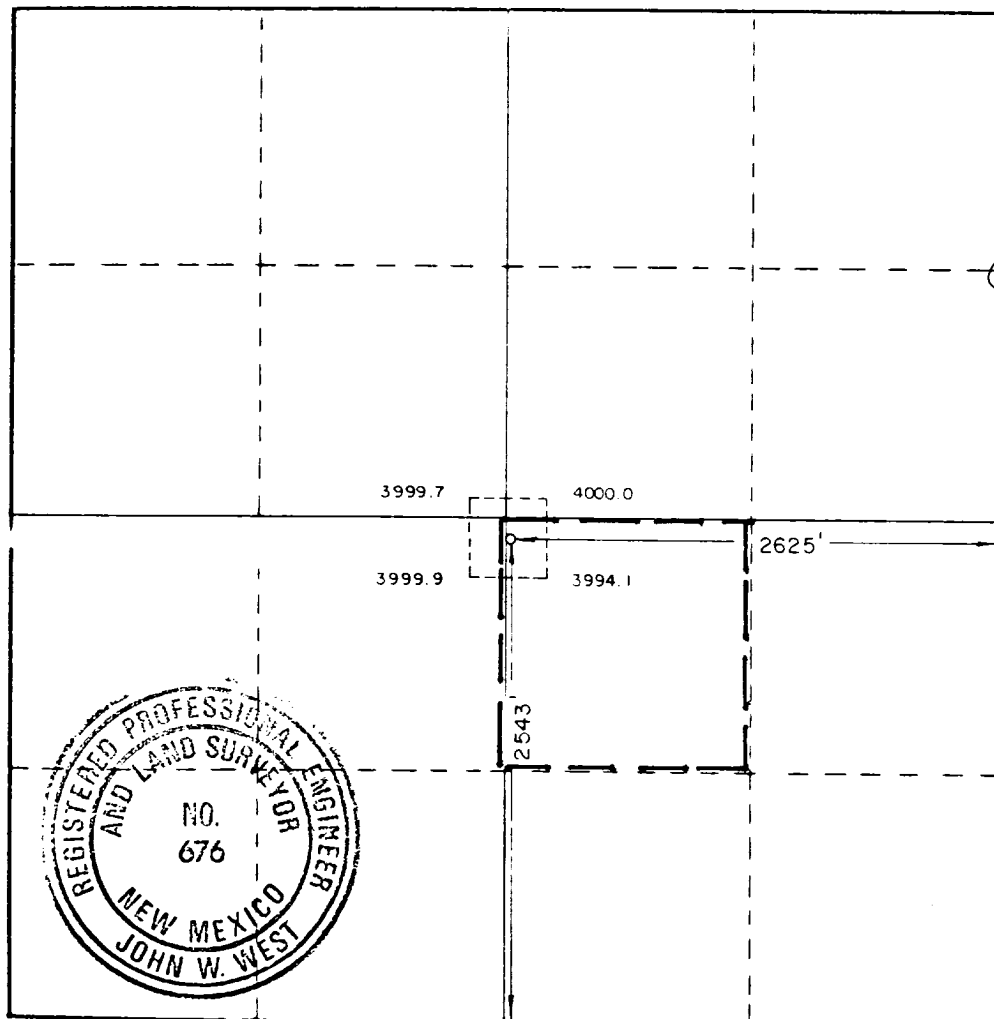
Operator Conoco, Inc.		Lease MCA		Well No. 378
Unit Letter J	Section 22	Township 17 South	Range 32 East	County Lea
Actual Footage Location of Well:				
2543 feet from the South line and		2625 feet from the East line		
Ground Level Elev. 4000.6	Producing Formation Grayburg / San Andres	Pool Maljamar Grayburg / San Andres	Dedicated Acreage: 40 Acres	

1. Outline the acreage dedicated to the subject well by colored pencil or hatchure marks on the plat below.
2. If more than one lease is dedicated to the well, outline each and identify the ownership thereof (both as to working interest and royalty).
3. If more than one lease of different ownership is dedicated to the well, have the interests of all owners been consolidated by communitization, unitization, force-pooling, etc?

☒ Yes ☐ No If answer is "yes," type of consolidation unitization

If answer is "no," list the owners and tract descriptions which have actually been consolidated. (Use reverse side of this form if necessary.)

No allowable will be assigned to the well until all interests have been consolidated (by communitization, unitization, forced-pooling, or otherwise) or until a non-standard unit, eliminating such interests, has been approved by the Commission.



CERTIFICATION

I hereby certify that the information contained herein is true and complete to the best of my knowledge and belief.

Name John W. West
Position Administrative Supervisor
Company Conoco Inc.
Date SEP 30 1987

I hereby certify that the well location shown on this plat was plotted from field notes of actual surveys made by me or under my supervision, and that the same is true and correct to the best of my knowledge and belief.

Date Surveyed September 3, 1987
Registered Professional Engineer and Land Surveyor

Certificate No. JOHN W. WEST, 676
RONALD J. EIDSON, 3239