

District I
PO Box 1980, Hobbs, NM 88241-1980
District II
PO Drawer DD, Artesia, NM 88211-0719
District III
1000 Rio Brazos Rd., Aztec, NM 87410
District IV
PO Box 2088, Santa Fe, NM 87504-2088

State of New Mexico
Energy, Minerals & Natural Resources Department

OIL CONSERVATION DIVISION
PO Box 2088
Santa Fe, NM 87504-2088

Form C-101
Revised February 10, 1994
Instructions on back
Submit to Appropriate District Office
State Lease - 6 Copies
Fee Lease - 5 Copies

☐ AMENDED REPORT

APPLICATION FOR PERMIT TO DRILL, RE-ENTER, DEEPEN, PLUGBACK, OR ADD A ZONE

¹ Operator Name and Address. GECKO, Inc. 310 W. Wall, Suite 702-LB106 Midland, Texas 79701		² OGRID Number 025739
³ Property Code 15873	⁴ Property Name GECKO Medlin	⁵ Well No. 1

⁷ Surface Location									
UL or lot no.	Section	Township	Range	Lot Idn	Feet from the	North/South line	Feet from the	East/West line	County
E	14	16S	37E		1980	North	660	West	Lea

⁸ Proposed Bottom Hole Location If Different From Surface									
UL or lot no.	Section	Township	Range	Lot Idn	Feet from the	North/South line	Feet from the	East/West line	County
⁹ Proposed Pool 1 Wildcat					¹⁰ Proposed Pool 2				

¹¹ Work Type Code E	¹² Well Type Code O	¹³ Cable/Rotary Rotary	¹⁴ Lease Type Code P	¹⁵ Ground Level Elevation 3785'
¹⁶ Multiple NO	¹⁷ Proposed Depth 11,200'	¹⁸ Formation Wolfcamp	¹⁹ Contractor TMBR/SHARP	²⁰ Spud Date 10/20/94

²¹ Proposed Casing and Cement Program					
Hole Size	Casing Size	Casing weight/foot	Setting Depth	Sacks of Cement	Estimated TOC
17 1/2	13 3/8	54.5	423	450	Surface
11	8 5/8	28	4400	1680	Surface
7 7/8	5 1/2	17	11,200	500	8000

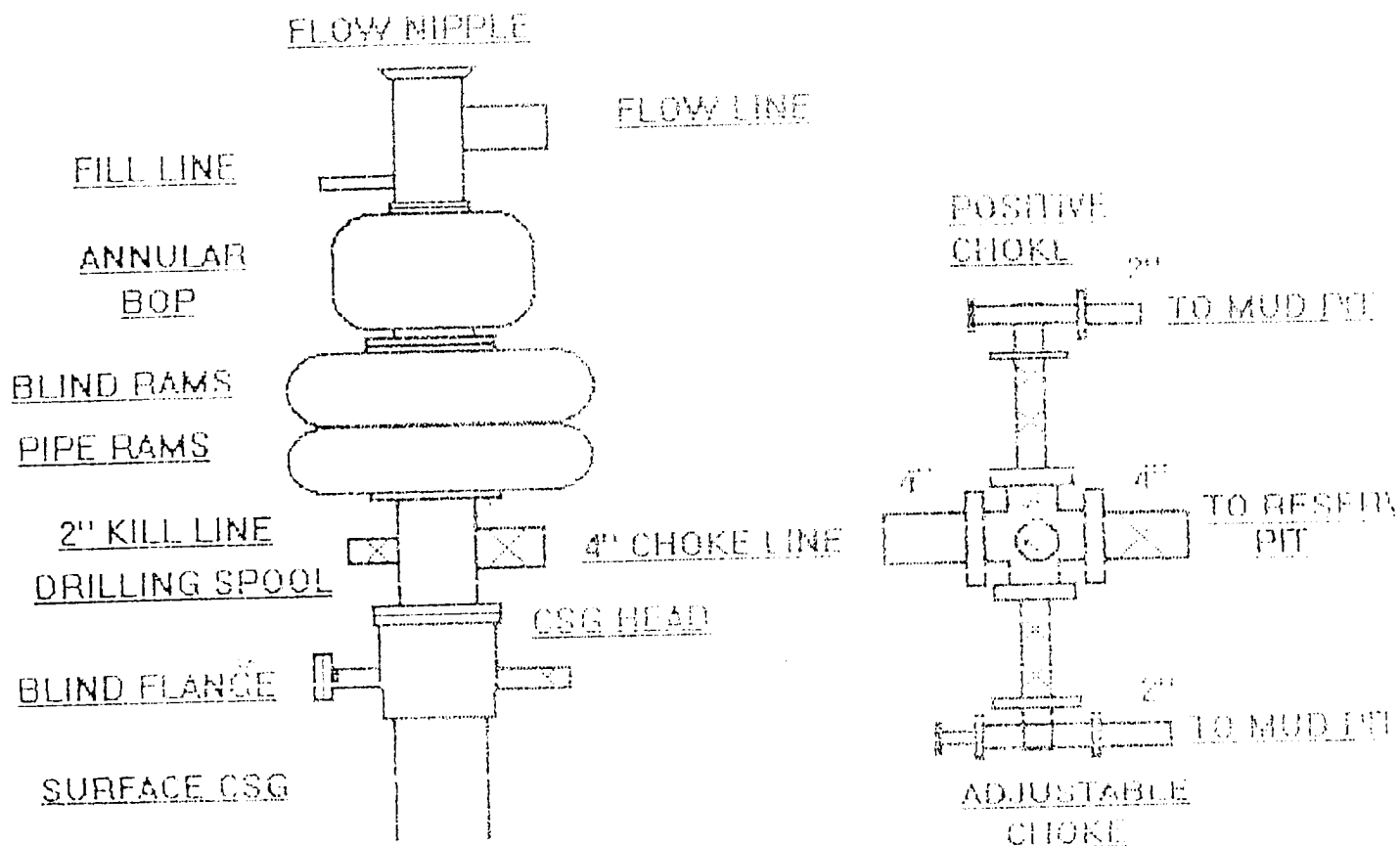
²² Describe the proposed program. If this application is to DEEPEN or PLUG BACK give the data on the present productive zone and proposed new productive zone. Describe the blowout prevention program, if any. Use additional sheets if necessary.

Reenter well and drill out cement plugs to 11,280' with cut brine water.
Set 100' cement plug from 11,280 - 11,180'.
Dress off top of plug.
DST or run 5 1/2" casing to PBTD.

Was Pennzoil Expl & Prod Co M H Medlin #1-E

Dr. Paul Kautz

²³ I hereby certify that the information given above is true and complete to the best of my knowledge and belief. Signature: <i>Steve L. Thomson</i>		OIL CONSERVATION DIVISION	
Printed name: Steve L. Thomson		Approved by: Drig. Signed by Paul Kautz Geologist	
Title: President		Title:	
Date: 10/14/94		Approval Date: OCT 21 1994 Expiration Date:	
Phone: (915) 686-0121		Conditions of Approval: Attached <input type="checkbox"/>	



BOP AND CHOKL DIAGRAM
 GECKO, INC.

District I
PO Box 1980, Hobbs, NM 88241-1980
District II
PO Drawer DD, Artesia, NM 88211-0719
District III
1000 Rio Brazos Rd., Aztec, NM 87410
District IV
PO Box 2088, Santa Fe, NM 87504-2088

State of New Mexico
Energy, Minerals & Natural Resources Department

OIL CONSERVATION DIVISION
PO Box 2088
Santa Fe, NM 87504-2088

Form C-102
Revised February 10, 1994
Instructions on back
Submit to Appropriate District Office
State Lease - 4 Copies
Fee Lease - 3 Copies

☐ AMENDED REPORT

WELL LOCATION AND ACREAGE DEDICATION PLAT

1 APT Number 30-025-30197		2 Pool Code 96039		3 Pool Name Wildcat Wolfcamp	
4 Property Code 15873		5 Property Name GECKO Medlin			6 Well Number 1
7 OGRID No. 025739		8 Operator Name GECKO, Inc.			9 Elevation 3785'

10 Surface Location

UL or lot no.	Section	Township	Range	Lot Idn	Feet from the	North/South line	Feet from the	East/West line	County
E	14	16S	37E		1980	North	660	West	Lea

11 Bottom Hole Location If Different From Surface

UL or lot no.	Section	Township	Range	Lot Idn	Feet from the	North/South line	Feet from the	East/West line	County
12 Dedicated Acres 40		13 Joint or Infill		14 Consolidation Code		15 Order No.			

NO ALLOWABLE WILL BE ASSIGNED TO THIS COMPLETION UNTIL ALL INTERESTS HAVE BEEN CONSOLIDATED
OR A NON-STANDARD UNIT HAS BEEN APPROVED BY THE DIVISION

	17 OPERATOR CERTIFICATION			
	I hereby certify that the information contained herein is true and complete to the best of my knowledge and belief.			
	Signature: <i>Steve L. Thomson</i> Printed Name: Steve L. Thomson Title: President Date: October 14, 1994			
	Date			
	18 SURVEYOR CERTIFICATION			
	I hereby certify that the well location shown on this plat was plotted from field notes of actual surveys made by me or under my supervision, and that the same is true and correct to the best of my belief.			
	Date of Survey: _____ Signature and Seal of Professional Surveyor: _____			
	Certificate Number			

NEW MEXICO OIL CONSERVATION COMMISSION
WELL LOCATION AND ACREAGE DEDICATION PLAT

Form O-100
Supersedes O-128
Effective 1-1-78

All distances must be from the outer boundaries of the Section

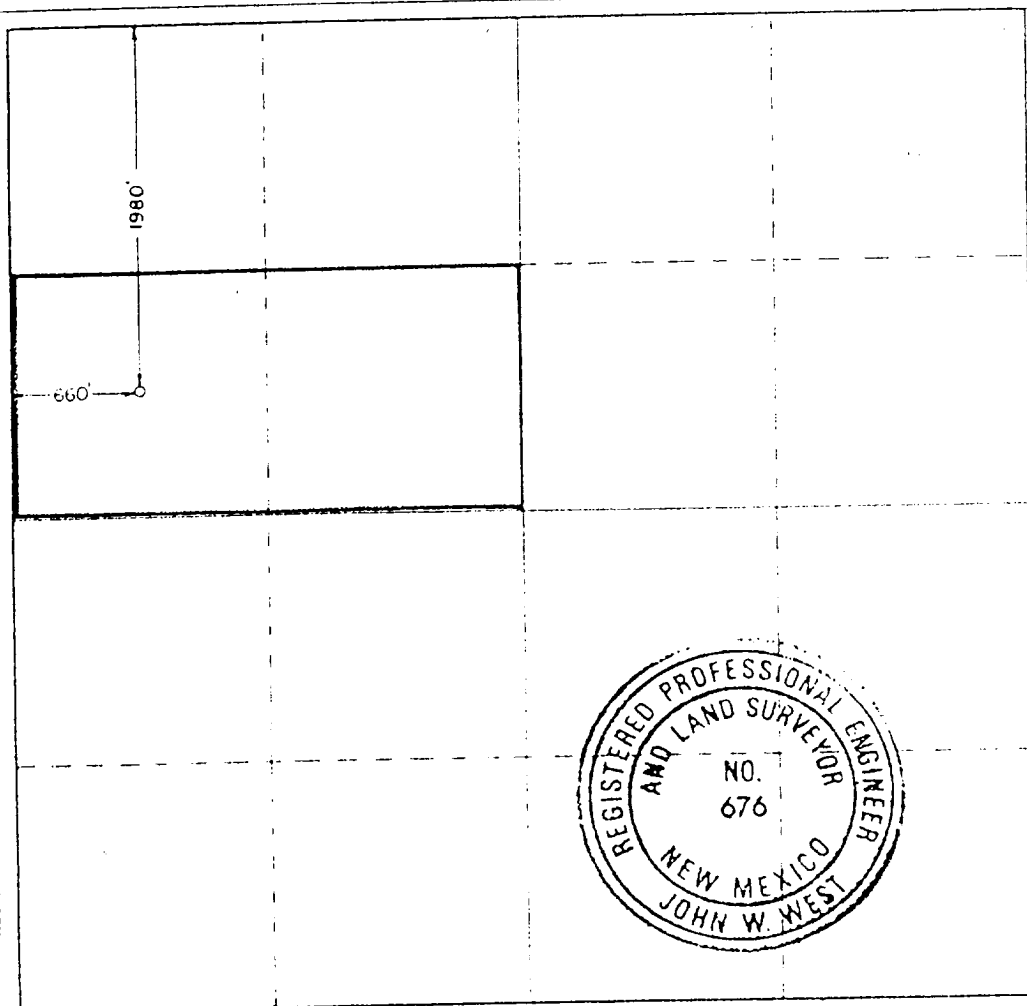
Operator Pennzoil Company			Lessee M. H. Nodlin			Well No. 1		
Section Letter E	Section 14	Township 16 South	Range 37 East	County Lea				
Actual Surface Location of Well:								
1980 feet from the North line and		660 feet from the West line						
Ground Level Elev. 3784.8	Producing Formation STRAWN		Pool UNDESIGNATED LOVINGTON, NE (PENN)			Estimated Acreage 80 Acres		

1. Outline the acreage dedicated to the subject well by colored pencil or hatchure marks on the plat below.
2. If more than one lease is dedicated to the well, outline each and identify the ownership thereof (both as to working interest and royalty)
3. If more than one lease of different ownership is dedicated to the well, have the interests of all owners been consolidated by communitization, unitization, force-pooling, etc?

☒ Yes ☐ No If answer is "yes," type of consolidation Force-pooled per Order No. R-8554

If answer is "no," list the owners and tract descriptions which have actually been consolidated (Use reverse side of this form if necessary.)

No allowable will be assigned to the well until all interests have been consolidated (by communitization, unitization, forced-pooling, or otherwise) or until a non-standard unit, eliminating such interests, has been approved by the Commission.



CERTIFICATION

I hereby certify that the information contained herein is true and complete to the best of my knowledge and belief.

Roy R. Johnson

Roy R. Johnson

Production Accountant

Pennzoil Company

1-6-88

I hereby certify that the well location shown on this plat was plotted from field notes of actual surveys made by me or under my supervision and that the same is true and correct to the best of my knowledge and belief.

Date Surveyed

November 11, 1987

Registered Professional Engineer and Land Surveyor

John W. West
Certificate No. 676 JOHN W. WEST
Registered Professional Engineer and Land Surveyor