

NEW MEXICO OIL CONSERVATION COMMISSION
WELL LOCATION AND ACREAGE DEDICATION PLAT

Form O-102
Supersedes O-128
Effective 1-1-85

All distances must be from the outer boundaries of the Section

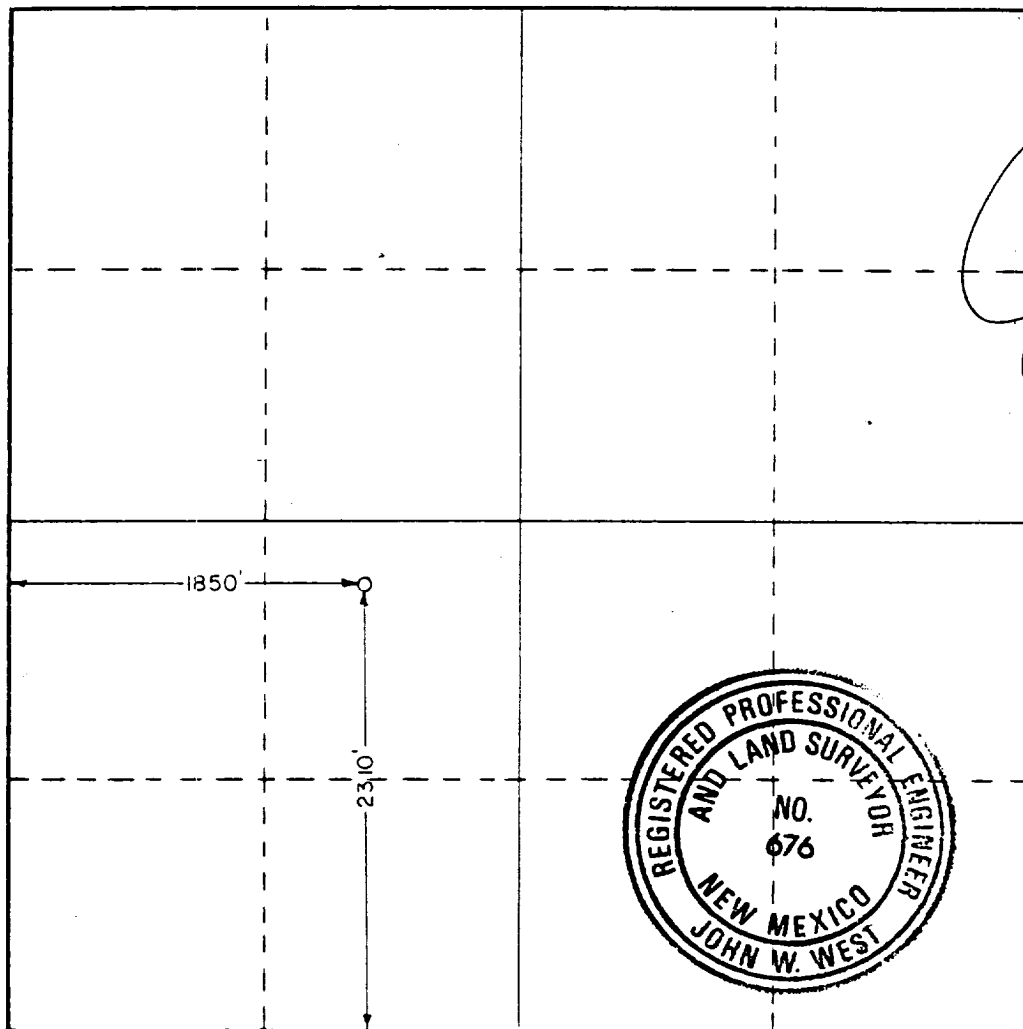
Operator UNION OIL CO. OF CALIFORNIA			Lease WAR STATE 30		Well No. 1
Unit Letter K	Section 30	Township 15 SOUTH	Range 32 EAST	County LEA	
Actual Footage Location of Well: 2310 feet from the SOUTH line and 1850 feet from the WEST line					
Ground Level Elev. 4341.1	Producing Formation Wolfcamp Bough		Pool Undesignated	Dedicated Acreage 40 Acres	

1. Outline the acreage dedicated to the subject well by colored pencil or hatchure marks on the plat below.
2. If more than one lease is dedicated to the well, outline each and identify the ownership thereof (both as to working interest and royalty).
3. If more than one lease of different ownership is dedicated to the well, have the interests of all owners been consolidated by communitization, unitization, force-pooling, etc?

☐ Yes ☐ No If answer is "yes," type of consolidation _____

If answer is "no," list the owners and tract descriptions which have actually been consolidated. (Use reverse side of this form if necessary.) _____

No allowable will be assigned to the well until all interests have been consolidated (by communitization, unitization, forced-pooling, or otherwise) or until a non-standard unit, eliminating such interests, has been approved by the Commission.



CERTIFICATION

I hereby certify that the information contained herein is true and complete to the best of my knowledge and belief.

Name
J. R. Hughes
J. R. Hughes

District Drilling Supt.

Company
Union Oil Co. of California

Date
1-19-88

I hereby certify that the well location shown on this plat was plotted from field notes of actual surveys made by me or under my supervision, and that the same is true and correct to the best of my knowledge and belief.

Date Surveyed
January 8, 1988

Registered Professional Engineer and/or Land Surveyor

Ronald J. Eison
Certificate No. JOHN W. WEST, 676
RONALD J. EISON, 3239

RECEIVED
JAN 19 1983
DCE
HOBBS OFFICE