

NEW MEXICO OIL CONSERVATION COMMISSION
WELL LOCATION AND ACREAGE DEDICATION PLAT

Form C-102
Supersedes C-128
Effective 1-1-85

All distances must be from the outer boundaries of the Section

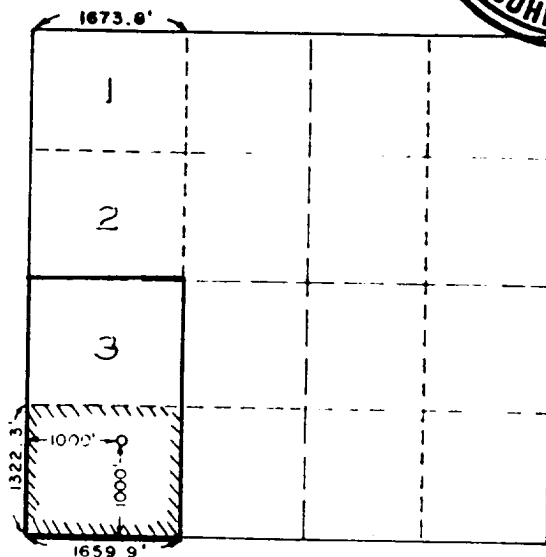
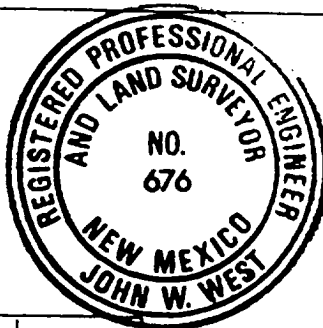
Operator NEARBURG PRODUCING CO.			Lease SOLEDAD 19M		Well No. 1
Tract Letter M	Section 19	Township 16 SOUTH	Range 37 EAST	County LEA	
Actual Footage Location of Well: 1000 feet from the SOUTH line and 1000 feet from the WEST line					
Ground Level Elev. 3833.8	Producing Formation Strawn	Pool Northeast Lovington-Pennsylvanian		Dedicated Acreage 100.81 Acres	

1. Outline the acreage dedicated to the subject well by colored pencil or hatchure marks on the plat below.
2. If more than one lease is dedicated to the well, outline each and identify the ownership thereof (both as to working interest and royalty).
3. If more than one lease of different ownership is dedicated to the well, have the interests of all owners been consolidated by communitization, unitization, force-pooling, etc?

☐ Yes ☐ No If answer is "yes," type of consolidation Not Applicable

If answer is "no," list the owners and tract descriptions which have actually been consolidated. (Use reverse side of this form if necessary.) Not Applicable

No allowable will be assigned to the well until all interests have been consolidated (by communitization, unitization, forced-pooling, or otherwise) or until a non-standard unit, eliminating such interests, has been approved by the Commission.



SCALE 1" = 2000'

CERTIFICATION

I hereby certify that the information contained herein is true and complete to the best of my knowledge and belief.

Name
Mark K. Nearburg

Position
Vice President-Land Manager

Company
Nearburg Producing Company

Date
January 28, 1988

I hereby certify that the well location shown on this plat was plotted from field notes of actual surveys made by me or under my supervision, and that the same is true and correct to the best of my knowledge and belief.

Date Surveyed
January 15, 1988

Registered Professional Engineer and/or Land Surveyor

John W. West

RECEIVED
APR 19 1988
OCD
HOBBY OFFICE