

NEW MEXICO OIL CONSERVATION COMMISSION
WELL LOCATION AND ACREAGE DEDICATION PLAT

Form C-102
Supersedes C-128
Effective 1-1-65

All distances must be from the outer boundaries of the Section.

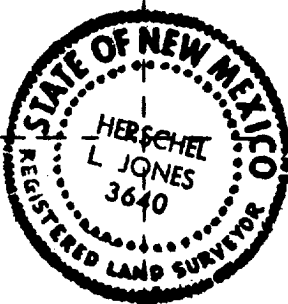
Operator YATES PETROLEUM CORPORATION		Lease KATHLEEN AFE		Well No. 1
Unit Letter N	Section 23	Township 16 South	Range 37 East	County Lea
Actual Footage Location of Well: <div style="display: flex; justify-content: space-between;"> 2500 feet from the West line and 990 feet from the South line </div>				
Ground Level Elev. 3771.5	Producing Formation MORROW	Pool WILDCAT	Dedicated Acreage: 320 Acres	

1. Outline the acreage dedicated to the subject well by colored pencil or hatchure marks on the plat below.
2. If more than one lease is dedicated to the well, outline each and identify the ownership thereof (both as to working interest and royalty).
3. If more than one lease of different ownership is dedicated to the well, have the interests of all owners been consolidated by communitization, unitization, force-pooling, etc?

☐ Yes ☐ No If answer is "yes," type of consolidation _____

If answer is "no," list the owners and tract descriptions which have actually been consolidated. (Use reverse side of this form if necessary.) _____

No allowable will be assigned to the well until all interests have been consolidated (by communitization, unitization, forced-pooling, or otherwise) or until a non-standard unit, eliminating such interests, has been approved by the Commission.



CERTIFICATION

I hereby certify that the information contained herein is true and complete to the best of my knowledge and belief.

Clinton R. May

Name
CLINTON R. MAY

Position
REGULATORY AGENT

Company
YATES PETROLEUM CORP.

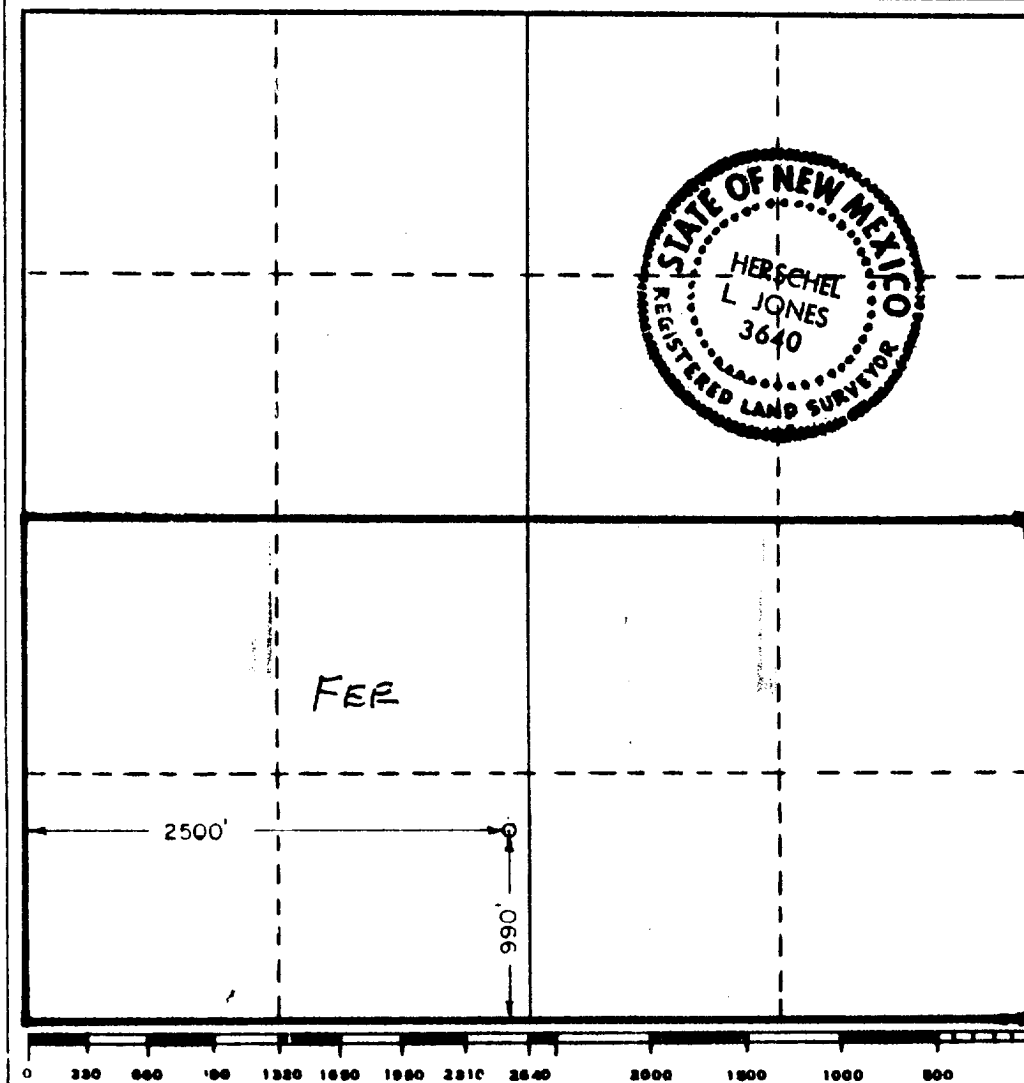
Date
1-29-88

I hereby certify that the well location shown on this plat was plotted from field notes of actual surveys made by me or under my supervision, and that the same is true and correct to the best of my knowledge and belief.

Date Surveyed
1/29/88

Registered Professional Engineer and/or Land Surveyor

Herschel L. Jones
Certificate No. **3640**



RECEIVED
JAN 29 1988
OCD
HOBBS OFFICE